



5V0-41.20^{Q&As}

VMware SD-WAN Troubleshoot

Pass VMware 5V0-41.20 Exam with 100% Guarantee

Free Download Real Questions & Answers **PDF** and **VCE** file from:

<https://www.pass4itsure.com/5v0-41-20.html>

100% Passing Guarantee
100% Money Back Assurance

Following Questions and Answers are all new published by VMware
Official Exam Center

- ⚙️ **Instant Download** After Purchase
- ⚙️ **100% Money Back** Guarantee
- ⚙️ **365 Days** Free Update
- ⚙️ **800,000+** Satisfied Customers



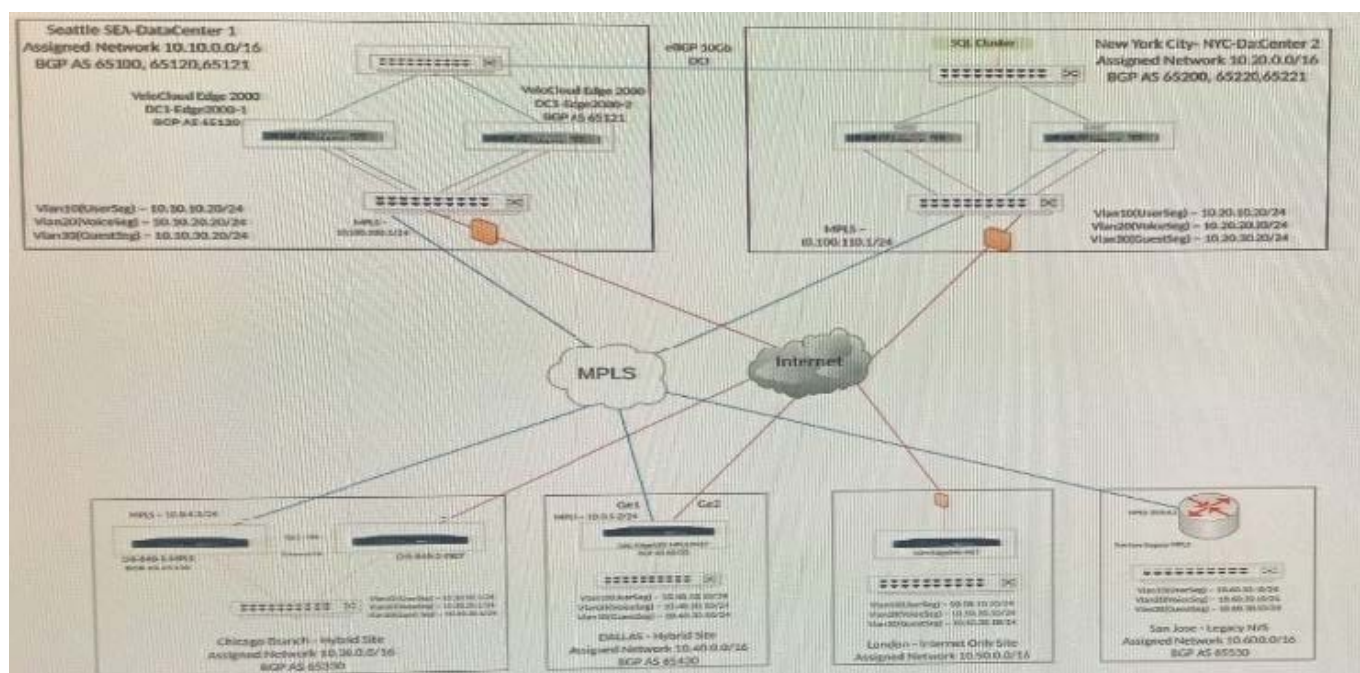


QUESTION 1

Scenario 2:

After completing the branch activation activities for all required branches, the network administrator attempts to test connectivity between the various branches and between the hubs and branches. The administrator notices a lack of connectivity despite being certain that configurations have been complete. The administrator also observed that several users are reporting intermittent connectivity to some of the applications they are accessing. Other users are reporting no access to these applications. Other users at some of the branches claim they cannot get to certain public resources. The administrator wants to ensure that all sites can talk to each other and all resources are accessible.

Exhibit.



The tunnel from spoke to hub is not coming up. What are the two possible reasons? (Choose two.)

- A. Spoke Edge and hub Edge are two different Edge models.
- B. Spoke Edge and hub Edge have a mismatch certificate authentication mode.
- C. Hub WAN Interface might be behind the NAT Device or firewall.
- D. Dynamic Branch to Branch is not enabled.

Correct Answer: BC

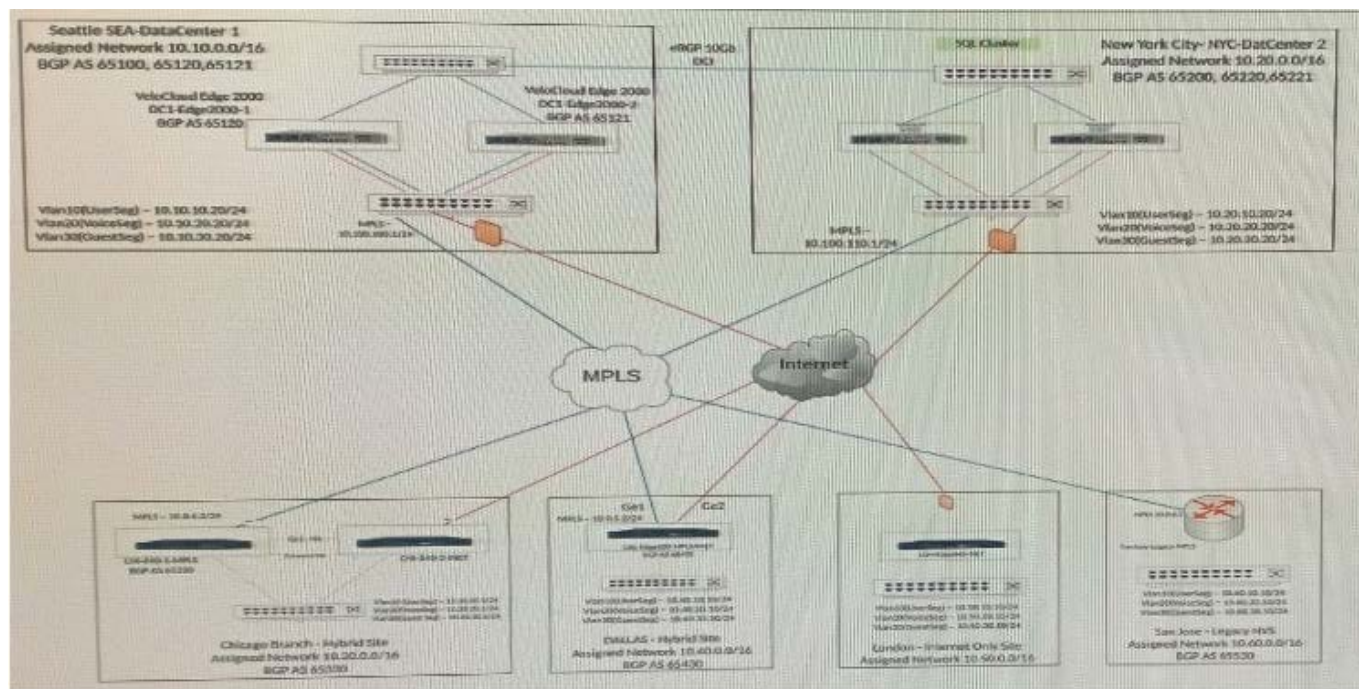
QUESTION 2

Scenario 1:



A network administrator is tasked with enabling SD-WAN at three branch locations. A topology has been provided for reference. For each site, the administrator is having issues bringing edges online, as another administrator has gone ahead and created a configuration ahead of time. The organization has several branch sites. One is an Internet-only site and two are Hybrid locations with both internet and MPLS. The last location is MPLS only. There are hub data center locations in this environment as well. Please refer to the topology.

Exhibit.



Interface Settings									
<div><div><div><div></div></div></div><div><div></div></div><div><div></div></div></div> <div><div></div></div> <div><div></div></div> <div><div></div></div>									
<div><div><div><div></div></div></div><div><div></div></div><div><div></div></div></div> <div><div></div></div> <div><div></div></div> <div><div></div></div>									
<div><div><div><div></div></div></div><div><div></div></div><div><div></div></div></div> <div><div></div></div> <div><div></div></div> <div><div></div></div>									
<div><div><div><div></div></div></div><div><div></div></div><div><div></div></div></div> <div><div></div></div> <div><div></div></div> <div><div></div></div>									
<div><div><div><div></div></div></div><div><div></div></div><div><div></div></div></div> <div><div></div></div> <div><div></div></div> <div><div></div></div>									
<div><div><div><div></div></div></div><div><div></div></div><div><div></div></div></div> <div><div></div></div> <div><div></div></div> <div><div></div></div>									
<div><div><div><div></div></div></div><div><div></div></div><div><div></div></div></div> <div><div></div></div> <div><div></div></div> <div><div></div></div>									
<div><div><div><div></div></div></div><div><div></div></div><div><div></div></div></div> <div><div></div></div> <div><div></div></div> <div><div></div></div>									
<div><div><div><div></div></div></div><div><div></div></div><div><div></div></div></div> <div><div></div></div> <div><div></div></div> <div><div></div></div>									
<div><div><div><div></div></div></div><div><div></div></div><div><div></div></div></div> <div><div></div></div> <div><div></div></div> <div><div></div></div>									
<div><div><div><div></div></div></div><div><div></div></div><div><div></div></div></div> <div><div></div></div> <div><div></div></div> <div><div></div></div>									
<div><div><div><div></div></div></div><div><div></div></div><div><div></div></div></div> <div><div></div></div> <div><div></div></div> <div><div></div></div>									
<div><div><div><div></div></div></div><div><div></div></div><div><div></div></div></div> <div><div></div></div> <div><div></div></div> <div><div></div></div>									
<div><div><div><div></div></div></div><div><div></div></div><div><div></div></div></div> <div><div></div></div> <div><div></div></div> <div><div></div></div>									
<div><div><div><div></div></div></div><div><div></div></div><div><div></div></div></div> <div><div></div></div> <div><div></div></div> <div><div></div></div>									
<div><div><div><div></div></div></div><div><div></div></div><div><div></div></div></div> <div><div></div></div> <div><div></div></div> <div><div></div></div>									
<div><div><div><div></div></div></div><div><div></div></div><div><div></div></div></div> <div><div></div></div> <div><div></div></div> <div><div></div></div>									
<div><div><div><div></div></div></div><div><div></div></div><div><div></div></div></div> <div><div></div></div> <div><div></div></div> <div><div></div></div>									
<div><div><div><div></div></div></div><div><div></div></div><div><div></div></div></div> <div><div></div></div> <div><div></div></div> <div><div></div></div>									
<div><div><div><div></div></div></div><div><div></div></div><div><div></div></div></div> <div><div></div></div> <div><div></div></div> <div><div></div></div>									
<div><div><div><div></div></div></div><div><div></div></div><div><div></div></div></div> <div><div></div></div> <div><div></div></div> <div><div></div></div>									
<div><div><div><div></div></div></div><div><div></div></div><div><div></div></div></div> <div><div></div></div> <div><div></div></div> <div><div></div></div>									
<div><div><div><div></div></div></div><div><div></div></div><div><div></div></div></div> <div><div></div></div> <div><div></div></div> <div><div></div></div>									
<div><div><div><div></div></div></div><div><div></div></div><div><div></div></div></div> <div><div></div></div> <div><div></div></div> <div><div></div></div>									
<div><div><div><div></div></div></div><div><div></div></div><div><div></div></div></div> <div><div></div></div> <div><div></div></div> <div><div></div></div>									
<div><div><div><div></div></div></div><div><div></div></div><div><div></div></div></div> <div><div></div></div> <div><div></div></div> <div><div></div></div>									
<div><div><div><div></div></div></div><div><div></div></div><div><div></div></div></div> <div><div></div></div> <div><div></div></div> <div><div></div></div>									
<div><div><div><div></div></div></div><div><div></div></div><div><div></div></div></div> <div><div></div></div> <div><div></div></div> <div><div></div></div>									
<div><div><div><div></div></div></div><div><div></div></div><div><div></div></div></div> <div><div></div></div> <div><div></div></div> <div><div></div></div>									
<div><div><div><div></div></div></div><div><div></div></div><div><div></div></div></div> <div><div></div></div> <div><div></div></div> <div><div></div></div>									
<div><div><div><div></div></div></div><div><div></div></div><div><div></div></div></div> <div><div></div></div> <div><div></div></div> <div><div></div></div>									
<div><div><div><div></div></div></div><div><div></div></div><div><div></div></div></div> <div><div></div></div> <div><div></div></div> <div><div></div></div>									
<div><div><div><div></div></div></div><div><div></div></div><div><div></div></div></div> <div><div></div></div> <div><div></div></div> <div><div></div></div>									
<div><div><div><div></div></div></div><div><div></div></div><div><div></div></div></div> <div><div></div></div> <div><div></div></div> <div><div></div></div>									
<div><div><div><div></div></div></div><div><div></div></div><div><div></div></div></div> <div><div></div></div> <div><div></div></div> <div><div></div></div>									
<div><div><div><div></div></div></div><div><div></div></div><div><div></div></div></div> <div><div></div></div> <div><div></div></div> <div><div></div></div>									
<div><div><div><div></div></div></div><div><div></div></div><div><div></div></div></div> <div><div></div></div> <div><div></div></div> <div><div></div></div>									
<div><div><div><div></div></div></div><div><div></div></div><div><div></div></div></div> <div><div></div></div> <div><div></div></div> <div><div></div></div>									
<div><div><div><div></div></div></div><div><div></div></div><div><div></div></div></div> <div><div></div></div> <div><div></div></div> <div><div></div></div>									
<div><div><div><div></div></div></div><div><div></div></div><div><div></div></div></div> <div><div></div></div> <div><div></div></div> <div><div></div></div>									
<div><div><div><div></div></div></div><div><div></div></div><div><div></div></div></div> <div><div></div></div> <div><div></div></div> <div><div></div></div>									
<div><div><div><div></div></div></div><div><div></div></div><div><div></div></div></div> <div><div></div></div> <div><div></div></div> <div><div></div></div>									
<div><div><div><div></div></div></div><div><div></div></div><div><div></div></div></div> <div><div></div></div> <div><div></div></div> <div><div></div></div>									
<div><div><div><div></div></div></div><div><div></div></div><div><div></div></div></div> <div><div></div></div> <div><div></div></div> <div><div></div></div>									
<div><div><div><div></div></div></div><div><div></div></div><div><div></div></div></div> <div><div></div></div> <div><div></div></div> <div><div></div></div>									
<div><div><div><div></div></div></div><div><div></div></div><div><div></div></div></div> <div><div></div></div> <div><div></div></div> <div><div></div></div>									
<div><div><div><div></div></div></div><div><div></div></div><div><div></div></div></div> <div><div></div></div> <div><div></div></div> <div><div></div></div>									
<div><div><div><div></div></div></div><div><div></div></div><div><div></div></div></div> <div><div></div></div> <div><div></div></div> <div><div></div></div>									
<div><div><div><div></div></div></div><div><div></div></div><div><div></div></div></div> <div><div></div></div> <div><div></div></div> <div><div></div></div>									
<div><div><div><div></div></div></div><div><div></div></div><div><div></div></div></div> <div><div></div></div> <div><div></div></div> <div><div></div></div>									
<div><div><div><div></div></div></div><div><div></div></div><div><div></div></div></div> <div><div></div></div> <div><div></div></div> <div><div></div></div>									
<div><div><div><div></div></div></div><div><div></div></div><div><div></div></div></div> <div><div></div></div> <div><div></div></div> <div><div></div></div>									
<div><div><div><div></div></div></div><div><div></div></div><div><div></div></div></div> <div><div></div></div> <div><div></div></div> <div><div></div></div>									
<div><div><div><div></div></div></div><div><div></div></div><div><div></div></div></div> <div><div></div></div> <div><div></div></div> <div><div></div></div>									
<div><div><div><div></div></div></div><div><div></div></div><div><div></div></div></div> <div><div></div></div> <div><div></div></div> <div><div></div></div>									
<div><div><div><div></div></div></div><div><div></div></div><div><div></div></div></div> <div><div></div></div> <div><div></div></div> <div><div></div></div>									
<div><div><div><div></div></div></div><div><div></div></div><div><div></div></div></div> <div><div></div></div> <div><div></div></div> <div><div></div></div>									
<div><div><div><div></div></div></div><div><div></div></div><div><div></div></div></div> <div><div></div></div> <div><div></div></div> <div><div></div></div>									
<div><div><div><div></div></div></div><div><div></div></div><div><div></div></div></div> <div><div></div></div> <div><div></div></div> <div><div></div></div>									
<div><div><div><div></div></div></div><div><div></div></div><div><div></div></div></div> <div><div></div></div> <div><div></div></div> <div><div></div></div>									
<div><div><div><div></div></div></div><div><div></div></div><div><div></div></div></div> <div><div></div></div> <div><div></div></div> <div><div></div></div>									
<div><div><div><div></div></div></div><div><div></div></div><div><div></div></div></div> <div><div></div></div> <div><div></div></div> <div><div></div></div>									
<div><div><div><div></div></div></div><div><div></div></div><div><div></div></div></div> <div><div></div></div> <div><div></div></div> <div><div></div></div>									
<div><div><div><div></div></div></div><div><div></div></div><div><div></div></div></div> <div><div></div></div> <div><div></div></div> <div><div></div></div>									
<div><div></div></div>									

The network administrator determines the issue preventing the Dallas Branch from coming online.

Refer to the Exhibit(s).



What must the administrator do for the Edge to communicate with the Orchestrator and other branches?

- A. Reverse the WAN Overlay configurations
- B. Update the Orchestrator to the latest version as it enables "Auto WAN Swapping"
- C. Delete the User Defined WAN Overlays as the Orchestrator will discover these automatically on MPLS and Internet
- D. Create a User-defined WAN Overlay to bond both interfaces

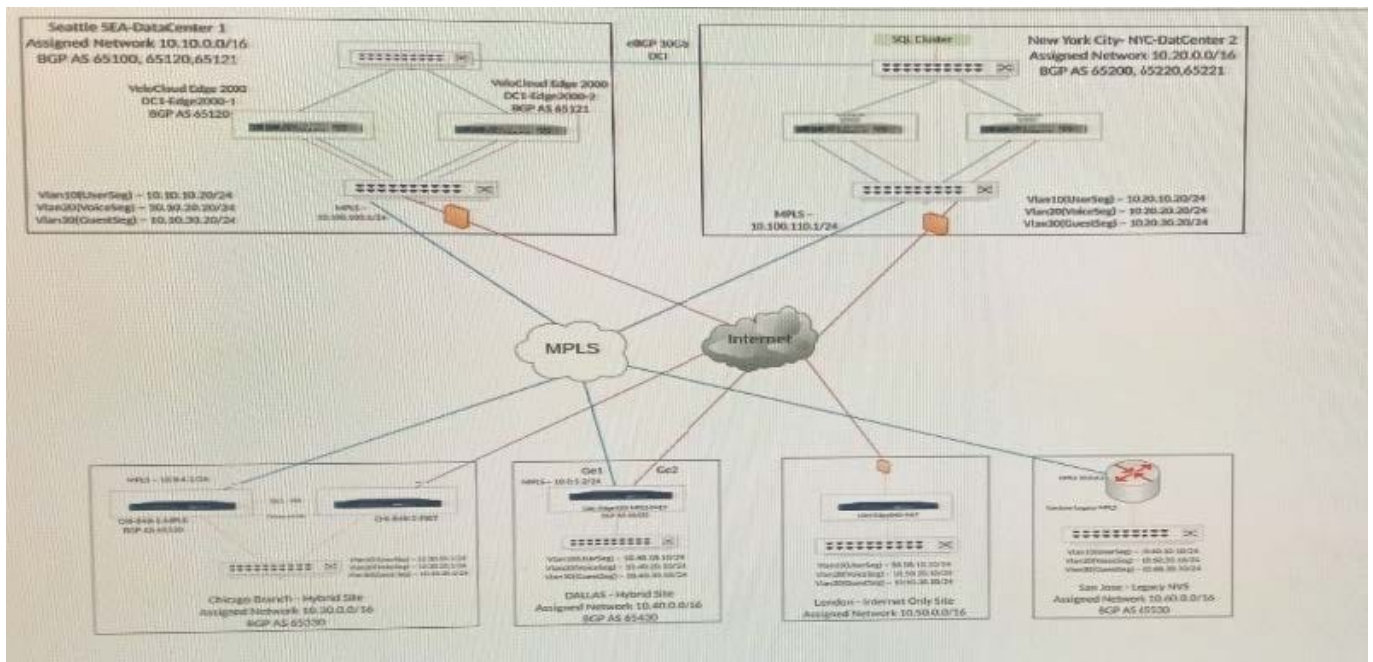
Correct Answer: A

QUESTION 3

Scenario 2:

After completing the branch activation activities for all required branches, the network administrator attempts to test connectivity between the various branches and between the hubs and branches. The administrator notices a lack of connectivity despite being certain that configurations have been complete. The administrator also observed that several users are reporting intermittent connectivity to some of the applications they are accessing. Other users are reporting no access to these applications. Other users at some of the branches claim they cannot get to certain public resources. The administrator wants to ensure that all sites can talk to each other and all resources are accessible.

Exhibit.



A network administrator is trying to create multiple overlays on a single physical interface on an Edge. The administrator is able to bring up only a single overlay so far, but is having trouble with bringing up additional overlays.

What could be the possible reason?

- A. The administrator does not have the right permission to create multiple overlays. The administrator needs to have an Operator-level privilege for this task.



- B. On the WAN overlay configuration, verify the IP address, next-hop, and the VLAN ID configuration.
- C. The licensing does not support multiple overlays on a single physical interface.
- D. Multiple overlays cannot be created on a single physical interface. Multiple physical interfaces are needed.

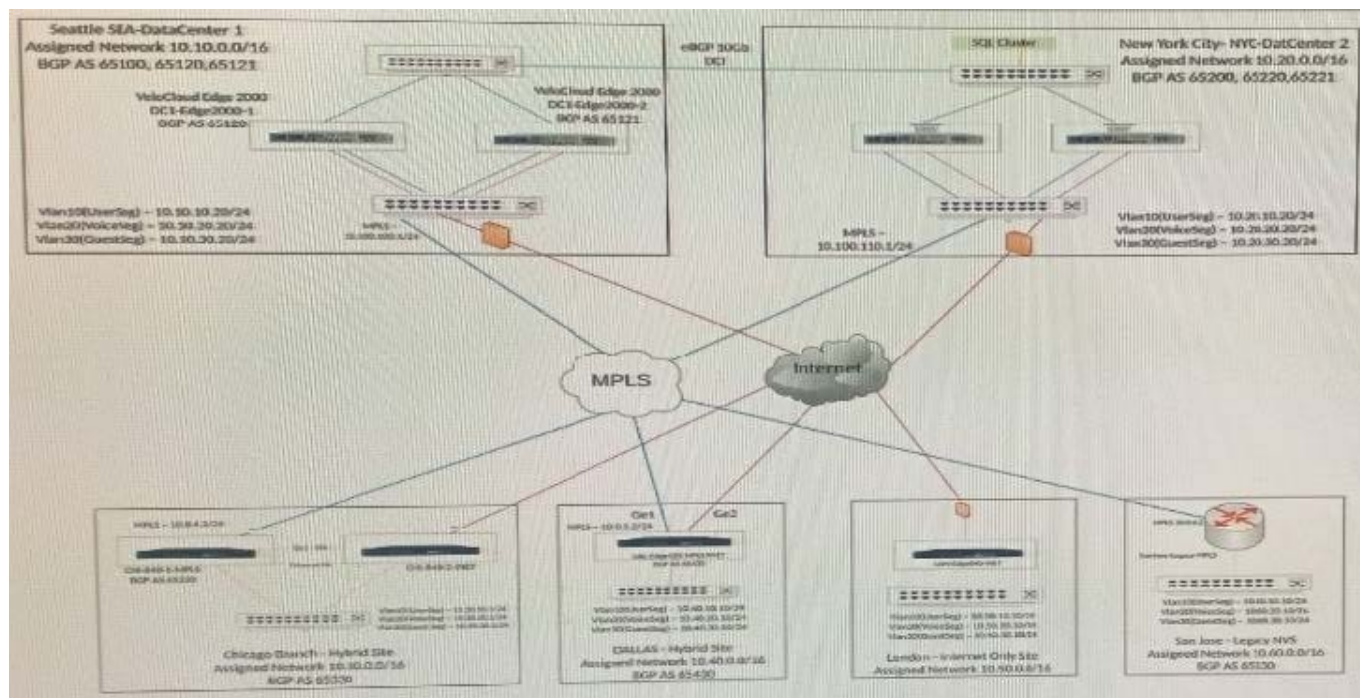
Correct Answer: A

QUESTION 4

Scenario 2:

After completing the branch activation activities for all required branches, the administrator attempts to test connectivity between the various branches and between the hubs and branches- The administrator notices a lack of connectivity despite being certain that configurations have been complete. The administrator also observed that several users are reporting intermittent connectivity to some of the applications they are accessing. Other users are reporting no access to these applications. Other users at some of the branches claim they cannot get to certain public resources. The administrator wants to ensure that all sites can talk to each other and all resources are accessible.

Exhibit.



The tunnel from the Dallas site to the Seattle hub is not coming up.

What are two things that should be checked to determine the issue? (Choose two.)

- A. Hub WAN Interface might be behind a firewall.
- B. Spoke Edge and Hub Edge have a mismatched certificate.
- C. Dynamic Branch to Branch is not enabled.



D. Spoke Edge and Hub Edge are two different Edge models.

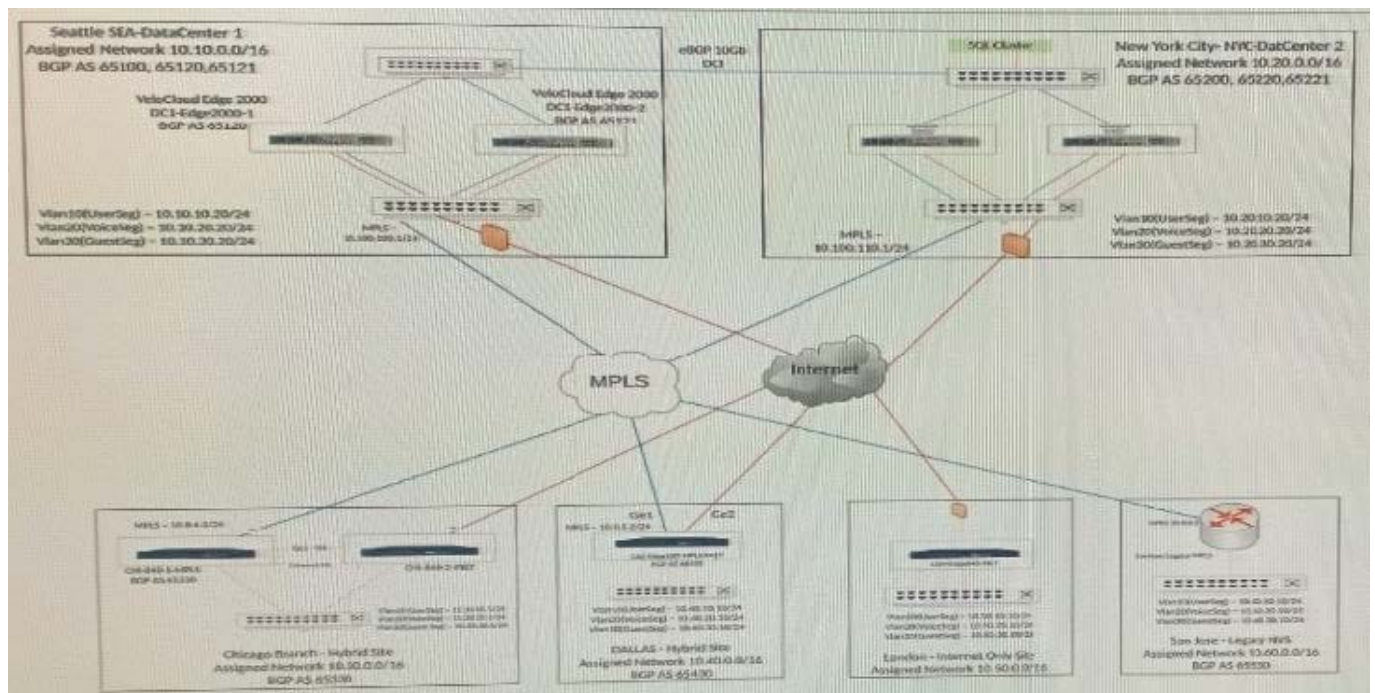
Correct Answer: AB

QUESTION 5

Scenario 3:

After resolving numerous connectivity issues throughout the various branch sites, connectivity between applications and users is finally present. The network administrator is informed that during certain tests, applications are not performing as they are expected to. Users report that call quality has not fully improved and that some of their calls either drop or have poor voice quality where the conversation is breaking up. Other users are noticing that file transfers are slower than expect. A group of users from a few sites have reported slowness in accessing; internal and external applications.

Exhibit.



A network administrator is configuring several branches to prefer a single prefix, 10.20.11.0/24, from the Seattle hub over the New York hub for various application performance reasons.

What are two effective ways the administrator can accomplish this? (Choose two.)

- A. Modify the AS Path in New York to be shorter for 10.20.11.0/24.
- B. In the hub preferred order in the profile, set the Seattle hub to be preferred over New York.
- C. Modify the AS Path in New York to be longer for 10.20.11.0/24.
- D. In the OFC 10.20.11.0/24, modify the preferred exit point to be Seattle and pin the route.

Correct Answer: BD



VCE & PDF

Pass4itSure.com

<https://www.pass4itsure.com/5v0-41-20.html>

2024 Latest pass4itsure 5V0-41.20 PDF and VCE dumps Download

[Latest 5V0-41.20 Dumps](#)

[5V0-41.20 Study Guide](#)

[5V0-41.20 Braindumps](#)