



# 5V0-41.20<sup>Q&As</sup>

VMware SD-WAN Troubleshoot

**Pass VMware 5V0-41.20 Exam with 100% Guarantee**

Free Download Real Questions & Answers **PDF** and **VCE** file from:

<https://www.pass4itsure.com/5v0-41-20.html>

100% Passing Guarantee  
100% Money Back Assurance

Following Questions and Answers are all new published by VMware  
Official Exam Center

-  **Instant Download** After Purchase
-  **100% Money Back** Guarantee
-  **365 Days** Free Update
-  **800,000+** Satisfied Customers



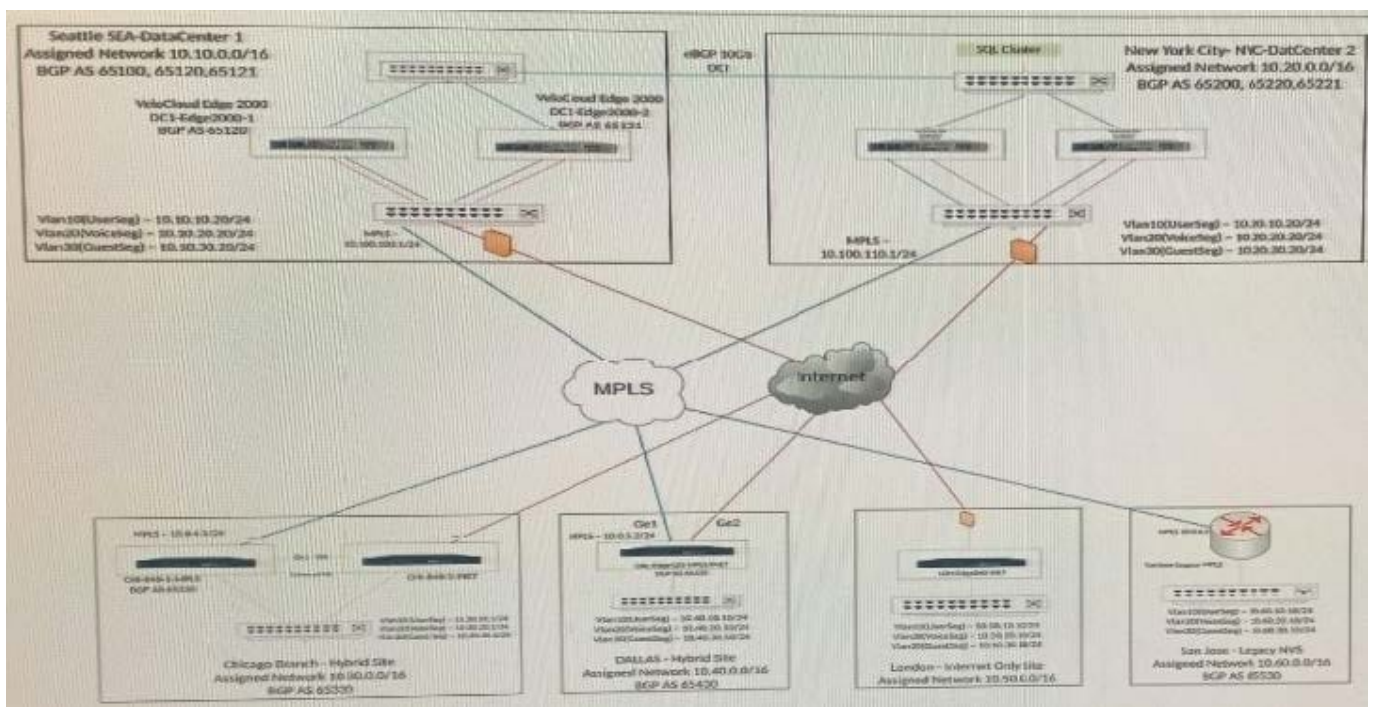


### QUESTION 1

Scenario 2:

After completing the branch activation activities for all required branches, the network administrator attempts to test connectivity between the various branches and between the hubs and branches. The administrator notices a lack of connectivity despite being certain that configurations have been complete. The administrator also observed that several users are reporting intermittent connectivity to some of the applications they are accessing. Other users are reporting no access to these applications. Other users at some of the branches claim they cannot get to certain public resources. The administrator wants to ensure that all sites can talk to each other and all resources are accessible.

Exhibit.



The SD-WAN Edge at this location has been activated. It is incapable of establishing any overlay tunnels. Due to this being an internet only branch, no underlay connectivity is present to the hubs. The SD-WAN Edge is connected behind a firewall and the security team states that all necessary ports are open.

How can this issue be resolved?

- A. The security team needs to open TCP port 4500 instead of TCP port 2426.
- B. The security team need to open TCP port 2426 outbound but not inbound.
- C. The security team needs to open TCP port 22 instead of TCP port 2426.
- D. The security team needs to open UDP port 2426 outbound and inbound.

Correct Answer: D

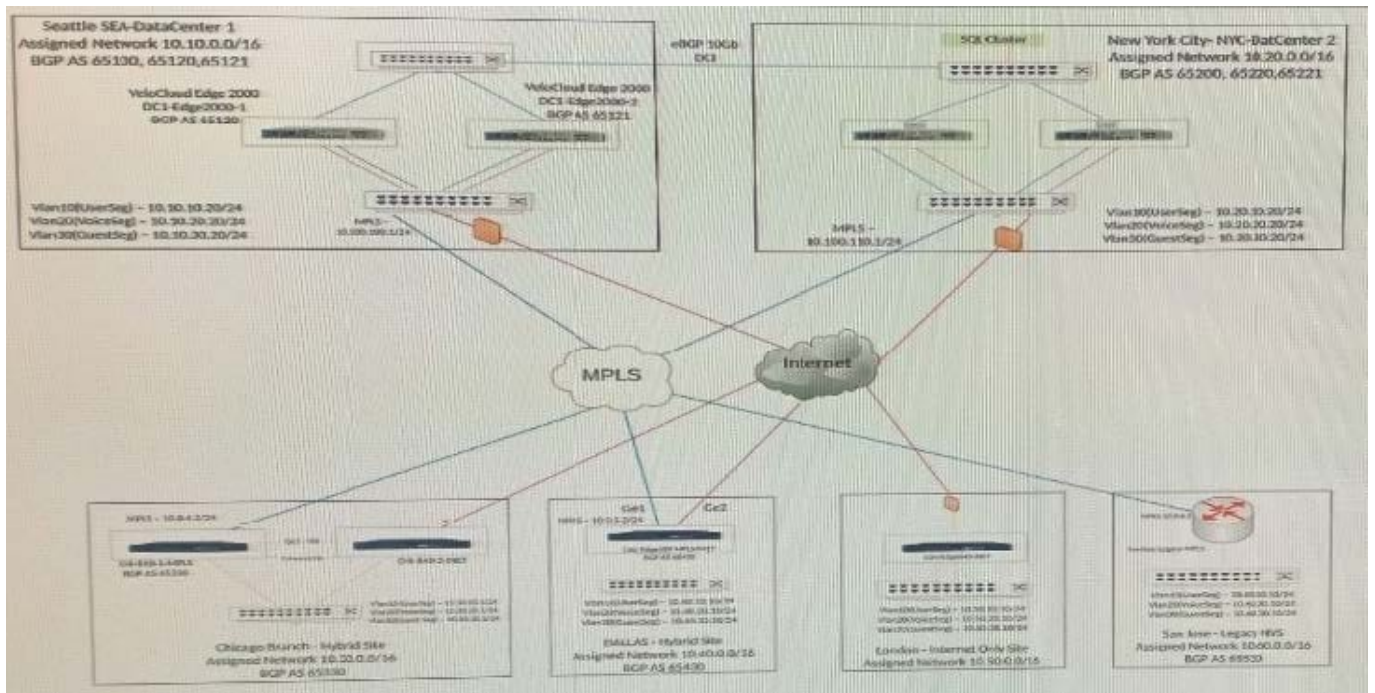


### QUESTION 2

Scenario 2:

After completing the branch activation for all required branches, the network administrator attempts to test connectivity between the various branches and between hubs and branches. The administrator notices a lack of connectivity despite being certain that configurations have been complete. The administrator also observed that several users are reporting intermittent connectivity to some of the some applications they are accessing. Other users are reporting no access to these applications. Other users at some of the branches claim they cannot get to certain public resources. The administrator wants to ensure that all sites can talk to each other and all resources are accessible.

Exhibit.



A technician has added Edges to an East Coast Profile. These Edges are not able to communicate via dynamic tunnels to Edges in the West\_Coast profile. The technician has noticed that some Edges are able to establish dynamic tunnels.

What could be preventing Edges from being able to establish dynamic tunnels?

- A. The profiles are not configured to allow dynamic branch to branch VPNs.
- B. The profiles are configured to only allow dynamic branch to branch for Edges within the same profile.
- C. None of the existing profiles have Cloud VPN enabled thus preventing dynamic tunnels.
- D. Neither profile has been configured to utilize cloud gateways.

Correct Answer: B

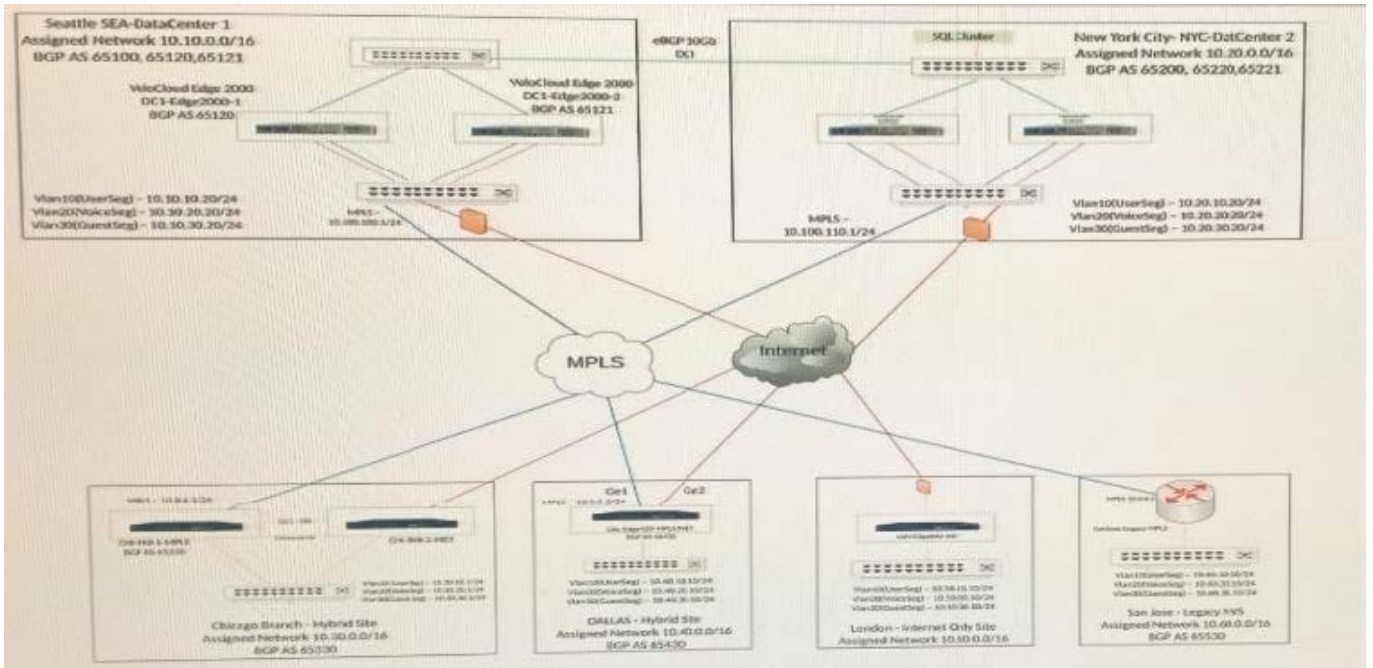
### QUESTION 3



Scenario 3:

After resolving numerous connectivity issues throughout the various branch sites, connectivity between applications and users is finally present. The network administrator is informed that during certain tests, applications are not performing as they are expected to. Users report that call quality has not fully improved and that some of their calls either drop or have poor voice quality where the conversation is breaking up. Other users are noticing that file transfers are slower than expect. A group of users from a few sites have reported slowness in accessing internal and external applications.

Exhibit.



A network administrator is receiving complaints that a real-time voice application is not performing well, with choppy audio, and dead audio especially during peak traffic times.

What two actions can the administrator take to diagnose and fix the issue? (Choose two.)

- A. Configure a QoS policy to rate limit all traffic during peak times.
- B. Ensure that the realtime application is matching the correct application type using the diagnostics page.
- C. Check the status of the links using the QoE and Transport tabs for any degraded underlay issues or congestion issues.
- D. Configure a QoS policy to load balance the realtime traffic across all links.

Correct Answer: AC

**QUESTION 4**

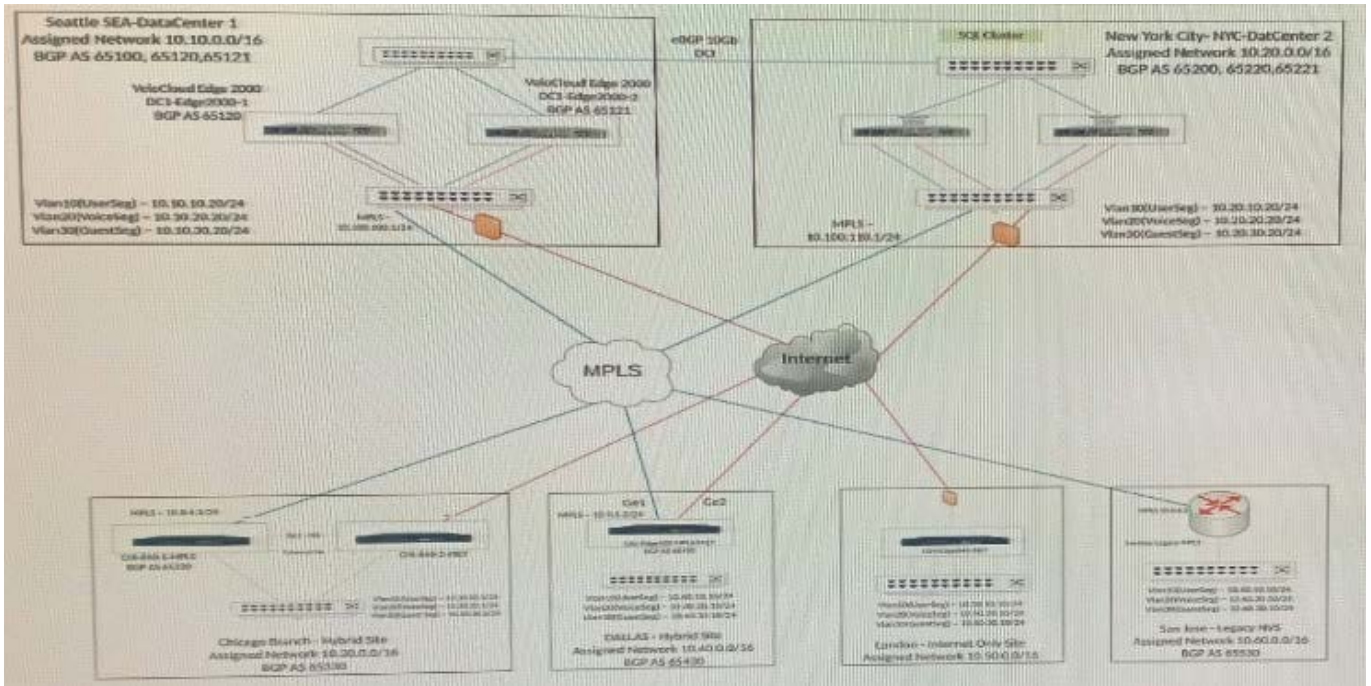
Scenario 3:

After resolving numerous connectivity Issues throughout the various branch sites, connectivity between applications and



users is finally present. The network administrator is informed that during certain tests, applications are not performing as they are expected to. Users report that call quality has not fully improved and that some of their calls either drop or have poor voice quality where the conversation is breaking up. Other users are noticing that file transfers are slower than expect. A group of users from a few sites have reported slowness in accessing internal and external applications.

Exhibit.



The network administrator has been made aware that Chicago is receiving traffic from non- SD-WAN sites, bottlenecking Chicago's interfaces. The network administrator's VMware SE has mentioned using the uplink feature to help resolve this.

What are two ways the uplink feature should be used in this scenario? (Choose two.)

- A. Set the uplink community to forward traffic to a group of neighbors.
- B. Direct all traffic to that neighbor designated as an uplink,
- C. Stop mutual redistribution of routes from underlay and overlay.
- D. Prevent the site in question from becoming a transit site.

Correct Answer: BD

## QUESTION 5

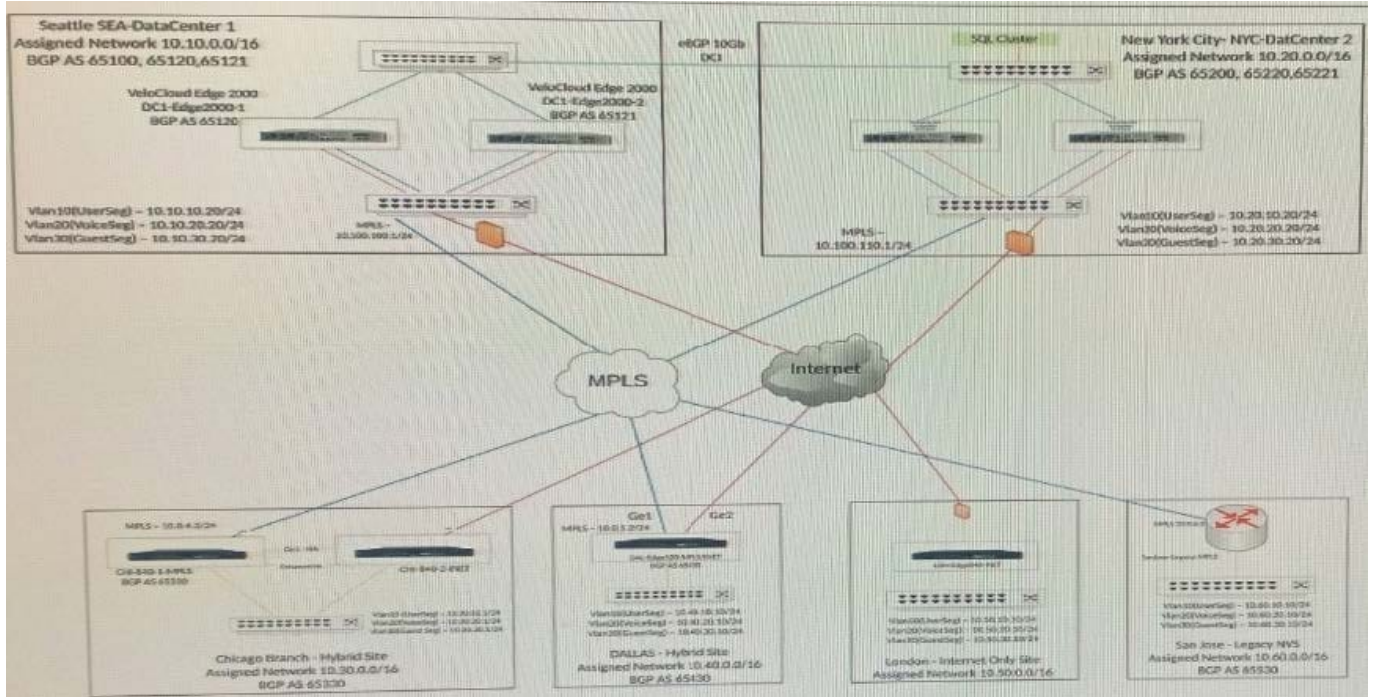
Scenario 3:

After resolving numerous connectivity issues throughout the various branch sites, connectivity between applications and users is finally present. The network administrator is informed that during certain tests, applications are not performing as they are expected to.



Users report that call quality has not fully improved and that some of their calls either drop or have poor voice quality where the conversation is breaking up. Other users are noticing that file transfers are slower than expect. A group of users from a few sites have reported slowness in accessing internal and external applications.

Exhibit.



Users are complaining that web pages to certain web sites are very slow to load and at times unresponsive. The network administrator has verified that the traffic is going correctly out the underlay.

What should the administrator check next?

- A. Verify if Path-MTU Discovery is disabled.
- B. Verify if there is latency, loss, or jitter on the underlay.
- C. Verify the Business Policy flows are matching.
- D. Verify if routes to Gateways are present in the Overlay Flow Control (OFC).

Correct Answer: A

[Latest 5V0-41.20 Dumps](#)

[5V0-41.20 Exam Questions](#)

[5V0-41.20 Brindumps](#)