



500-220^{Q&As}

Cisco Meraki Solutions Specialist

Pass Cisco 500-220 Exam with 100% Guarantee

Free Download Real Questions & Answers **PDF** and **VCE** file from:

<https://www.pass4itsure.com/500-220.html>

100% Passing Guarantee
100% Money Back Assurance

Following Questions and Answers are all new published by Cisco
Official Exam Center

-  **Instant Download** After Purchase
-  **100% Money Back** Guarantee
-  **365 Days** Free Update
-  **800,000+** Satisfied Customers





QUESTION 1

For which two reasons can an organization become "Out of License"? (Choose two.)

- A. licenses that are in the wrong network
- B. more hardware devices than device licenses
- C. expired device license
- D. licenses that do not match the serial numbers in the organization
- E. MR licenses that do not match the MR models in the organization

Correct Answer: BC

Reference: https://documentation.meraki.com/General_Administration/Licensing/Meraki_Licensing_FAQs

QUESTION 2

What is a feature of distributed Layer 3 roaming?

- A. An MX Security Appliance is not required as a concentrator.
- B. An MX Security Appliance is required as a concentrator.
- C. All wireless client traffic can be split-tunneled.
- D. All wireless client traffic is tunneled.

Correct Answer: A

Reference: https://documentation.meraki.com/Architectures_and_Best_Practices/Cisco_Meraki_Best_Practice_Design/Best_Practice_Design_-_MR_Wireless/Wireless_Layer_3_Roaming_Best_Practices

QUESTION 3

Which two features and functions are supported when using an MX appliance in Passthrough mode? (Choose two.)

- A. intrusion prevention
- B. site-to-site VPN
- C. secondary uplinks
- D. DHCP
- E. high availability

Correct Answer: AB



Reference: https://documentation.meraki.com/MX/Networks_and_Routing/Passthrough_Mode_on_the_MX_Security_Appliance_and_Z-series_Teleworker_Gateway

QUESTION 4

DRAG DROP

Drag and drop the descriptions from the left onto the corresponding MX operation mode on the right.

Select and Place:

The MX appliance acts as a layer 2 bridge	Routed mode <div style="border: 1px solid black; height: 20px; width: 100%;"></div> <div style="border: 1px solid black; height: 20px; width: 100%;"></div> <div style="border: 1px solid black; height: 20px; width: 100%;"></div> <div style="border: 1px solid black; height: 20px; width: 100%;"></div>
This mode is the default mode of operation	
DHCP services can be configured on the MX appliance	
VLANs cannot be configured	
This mode is generally also the default gateway for devices on the LAN	Passthrough mode <div style="border: 1px solid black; height: 20px; width: 100%;"></div> <div style="border: 1px solid black; height: 20px; width: 100%;"></div> <div style="border: 1px solid black; height: 20px; width: 100%;"></div> <div style="border: 1px solid black; height: 20px; width: 100%;"></div>
This mode is not recommended at the network perimeter	
No address translation is provided	
Client traffic to the internet has the source IP rewritten to match the WAN IP of the appliance	

Correct Answer:



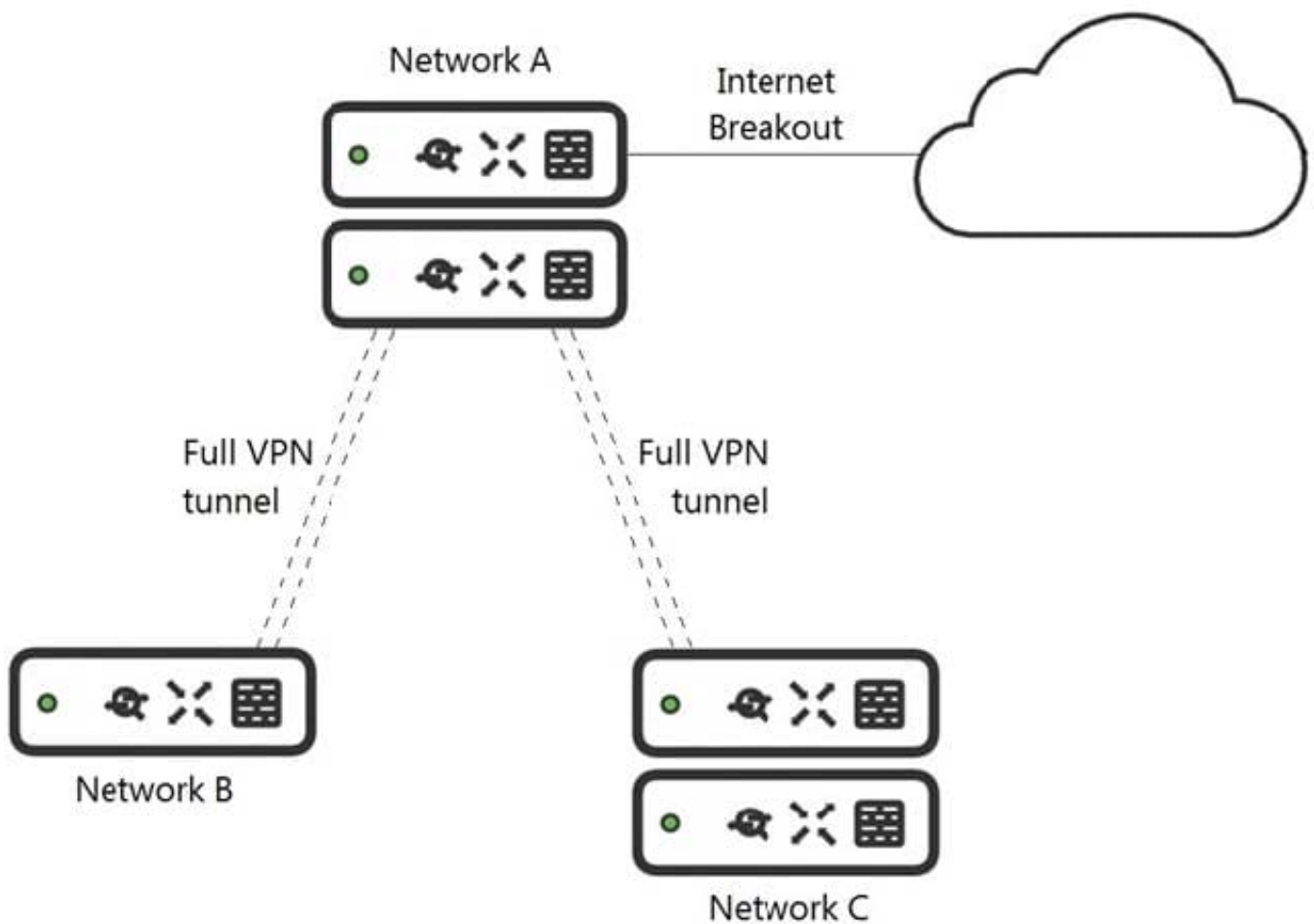
Routed mode

- Client traffic to the internet has the source IP rewritten to match the WAN IP of the appliance
- VLANs cannot be configured
- This mode is the default mode of operation
- This mode is generally also the default gateway for devices on the LAN

Passthrough mode

- The MX appliance acts as a layer 2 bridge
- DHCP services can be configured on the MX appliance
- This mode is not recommended at the network perimeter
- No address translation is provided

QUESTION 5



Refer to the exhibit. What is the minimal Cisco Meraki Insight licensing requirement?

- A. A single Meraki Insight license must be configured on network A to gain Web App Health visibility on network B.
- B. A single Meraki Insight license must be configured on network B to gain Web App Health visibility on network B.
- C. A single Meraki Insight license must be configured on network A, and a single license must be configured on network B, to gain Web App Health visibility on network B.
- D. Two Meraki Insight licenses must be configured on network A to gain Web App Health visibility on network B.
- E. Two Meraki Insight licenses must be configured on network A and a single license must be configured on network B, to gain Web App Health visibility on network B.

Correct Answer: E

[500-220 PDF Dumps](#)

[500-220 Practice Test](#)

[500-220 Exam Questions](#)