



4A0-M03^{Q&As}

Nokia Mobility Manager

Pass Nokia 4A0-M03 Exam with 100% Guarantee

Free Download Real Questions & Answers **PDF** and **VCE** file from:

<https://www.pass4itsure.com/4a0-m03.html>

100% Passing Guarantee
100% Money Back Assurance

Following Questions and Answers are all new published by Nokia
Official Exam Center

- ⚙ **Instant Download** After Purchase
- ⚙ **100% Money Back** Guarantee
- ⚙ **365 Days** Free Update
- ⚙ **800,000+** Satisfied Customers





QUESTION 1

Which of the following statements regarding the SMC procedure is FALSE?

- A. SMC procedure must be completed successfully before AKA procedure starts.
- B. MME sends a security mode command message to the UE.
- C. UE responds with a security mode complete message.
- D. SMC procedure is used to provide NAS signaling security between the UE and the MME.

Correct Answer: A

QUESTION 2

Which of the following statements regarding an EPS dedicated bearer is FALSE?

- A. A dedicated bearer is any EPS bearer to a PDN that is already connected to the UE.
- B. A dedicated bearer can be either a GBR or non-GBR bearer.
- C. A dedicated bearer remains active as long as the UE is attached to EPS.
- D. A dedicated bearer uses the same IP address that was allocated for the associated default bearer.

Correct Answer: B

Reference: <https://www.mpirical.com/glossary/gbr-guaranteed-bit-rate>

QUESTION 3

Which of the following statements regarding SGW selection by the MME is FALSE?

- A. SGW selection can occur during initial attach, tracking area update, or handover procedures
- B. MME can select an SGW by performing a DNS query on a given TAI FQDN
- C. MME can select an SGW based on the overload control information received from each SGW in the SGW pool
- D. MME can select an SGW from the SGW pool(s) configured to serve the given TAI

Correct Answer: C

QUESTION 4

Which of the following statements regarding IMS emergency services is FALSE?

- A. IMS emergency services depend on location services (LCS).

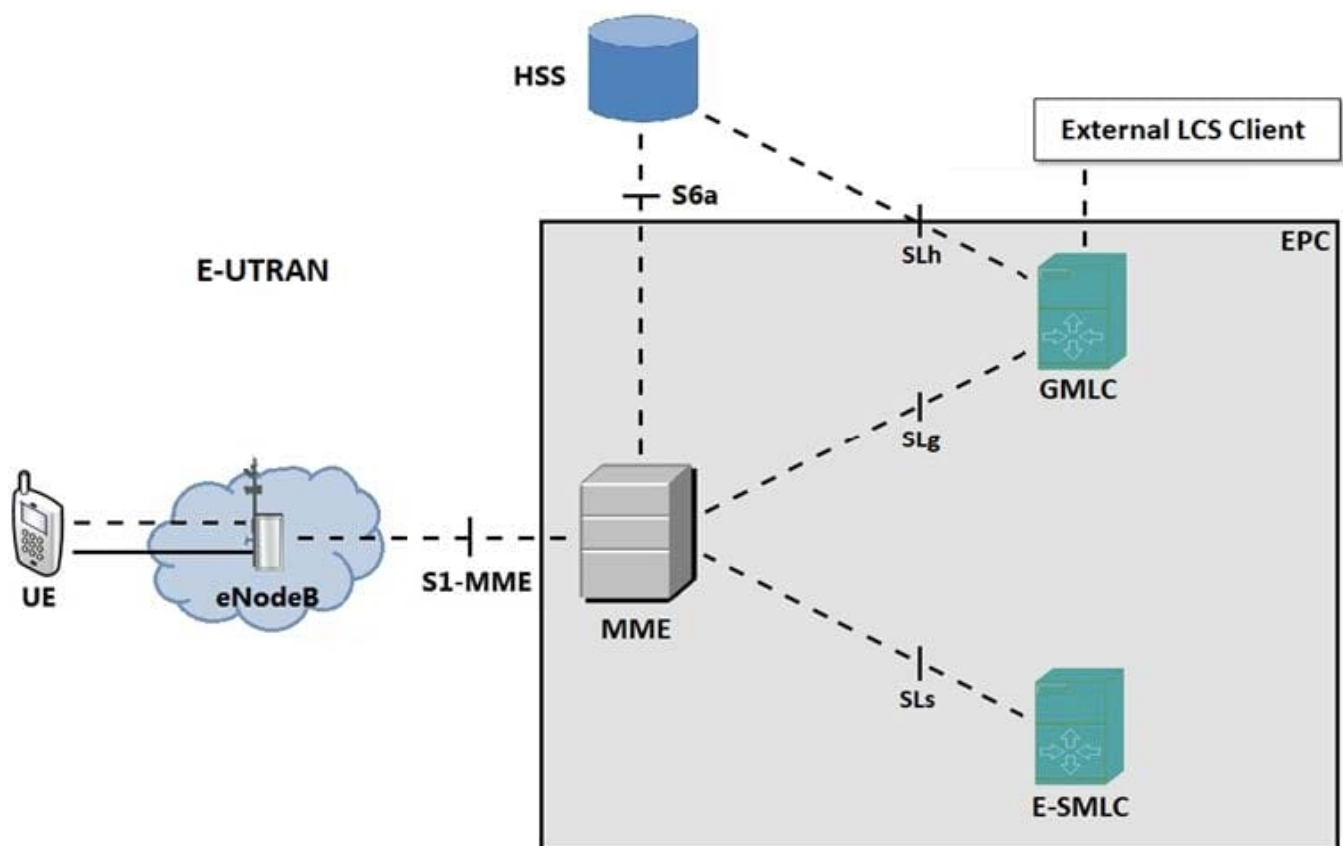


- B. MME obtains emergency PGW identity from the subscription data in HSS.
- C. Local emergency number list is used by UE to detect if an emergency number is dialed.
- D. MME can be configured to provide emergency services to UEs in limited service state.

Correct Answer: A

QUESTION 5

Given the exhibit, which component initiated a mobile-terminated location request (MT-LR) procedure for external LCS client?



- A. MME
- B. GMLC
- C. E-SMLC
- D. HSS

Correct Answer: D

Reference: [https://www.google.com/url?](https://www.google.com/url?sa=t&andrc=jandq=andesrc=sandsource=webandcd=andved=2ahUKEwiEuu_cmrrnsAhXiD2MBHQUND3AQFjAAegQIBhACandurl=ftp%3A%2F%2Fwww.3gpp.org%2Ftsg_sa%2FWG5_TM%2FTSGS5_68%2F_specs_for_checking%2Fupgrade%2F32271-900.docandusg=AOvVaw1w-lpeUNE8VTNAgojrdFa4)

sa=tandrc=jandq=andesrc=sandsource=webandcd=andved=2ahUKEwiEuu_cmrrnsAhXiD2MBHQUND3AQFjAAegQIBhACandurl=ftp%3A%2F%2Fwww.3gpp.org%2Ftsg_sa%2FWG5_TM%2FTSGS5_68%2F_specs_for_checking%2Fupgrade%2F32271-900.docandusg=AOvVaw1w-lpeUNE8VTNAgojrdFa4



VCE & PDF

Pass4itSure.com

<https://www.pass4itsure.com/4a0-m03.html>

2024 Latest pass4itsure 4A0-M03 PDF and VCE dumps Download

[4A0-M03 VCE Dumps](#)

[4A0-M03 Practice Test](#)

[4A0-M03 Braindumps](#)