



4A0-C01^{Q&As}

Nokia NRS II Composite Exam

Pass Nokia 4A0-C01 Exam with 100% Guarantee

Free Download Real Questions & Answers **PDF** and **VCE** file from:

<https://www.pass4itsure.com/4a0-c01.html>

100% Passing Guarantee
100% Money Back Assurance

Following Questions and Answers are all new published by Nokia
Official Exam Center

-  **Instant Download** After Purchase
-  **100% Money Back** Guarantee
-  **365 Days** Free Update
-  **800,000+** Satisfied Customers



**QUESTION 1**

Click on the exhibit.

```
configure router mpls
  path "to-PE2"
    hop 1 10.48.1.1 strict
    hop 2 10.1.3.1 strict
    hop 3 10.1.2.2 strict
    hop 4 10.32.1.2 strict
  no shutdown
exit
lsp "LSP-to-PE2"
  to 10.1.4.78
  cspf
  exit
  primary "to-PE2"
  exit
  no shutdown
exit
no shutdown
```

This LSP terminates on a system IP address. What is the system address of the destination node?

- A. 10.32.1.2
- B. 10.1.4.78
- C. 10.48.1.1
- D. 10.1.2.2

Correct Answer: C

QUESTION 2

Which of the following is true when the implicit null is implemented?

- A. The penultimate router will pop the top label from the packets.
- B. The eLER will receive packets with a top label value of 3.
- C. The eLER will receive packets with a top label value of 0.
- D. The penultimate router will always receive unlabeled packets.



Correct Answer: A

QUESTION 3

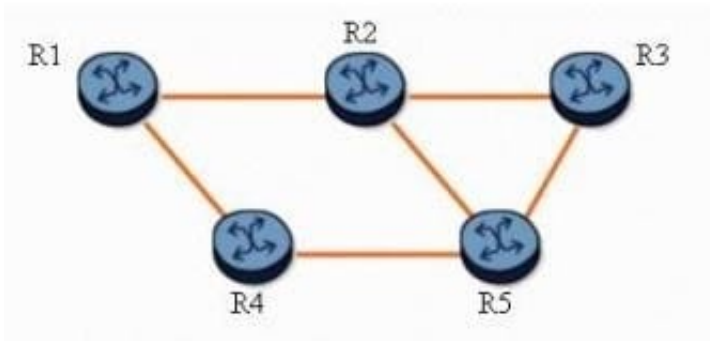
Which of the following statements regarding the last two octets of the LDP identifier is true?

- A. It is always a random 16-bit number.
- B. It is always zero for per-interface label space.
- C. It is always non-zero.
- D. It is always zero for per-platform label space.
- E. It is always non-zero for per-platform label space.

Correct Answer: D

QUESTION 4

Click on the exhibit button below.



With fast reroute enabled, and given the following:

Two protected LSPs with the path R1-R2-R3

Both LSPs enable facility bypass and link protection.

When router R1 is the PLR, which router becomes the MP?

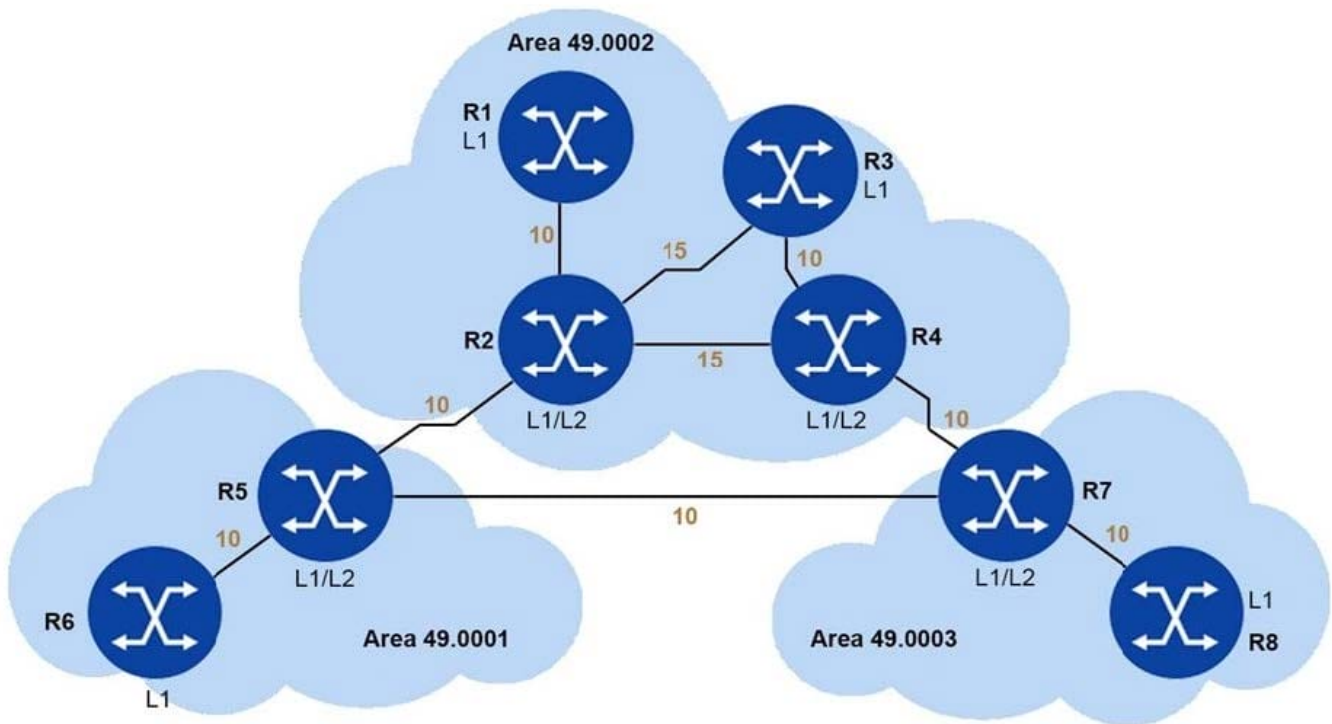
- A. Router R1
- B. Router R2
- C. Router R3
- D. Router R4
- E. Router R5



Correct Answer: B

QUESTION 5

Given the diagram below, what path will traffic follow from router R6 to router R3, and from router R3 to router R6, if IS-IS is the routing protocol? The numbers beside the links are the metrics for that link.



- A. Router R6 to router R3 will follow (R6-R5-R2-R3). Router R3 to router R6 will follow (R3-R2-R5-R6).
- B. Router R6 to router R3 will follow (R6-R5-R2-R3). Router R3 to router R6 will follow (R3-R4-R2-R5-R6).
- C. Router R6 to router R3 will follow (R6-R5-R2-R3). Router R3 to router R6 will follow (R3-R4-R7-R5-R6).
- D. Router R6 to router R3 will follow (R6-R5-R7-R4-R3). Router R3 to router R6 will follow (R3-R4-R7-R5-R6).

Correct Answer: C

[4A0-C01 VCE Dumps](#)

[4A0-C01 Exam Questions](#)

[4A0-C01 Braindumps](#)