



# 4A0-106<sup>Q&As</sup>

Alcatel-Lucent Virtual Private Routed Networks

## Pass Alcatel-Lucent 4A0-106 Exam with 100% Guarantee

Free Download Real Questions & Answers **PDF** and **VCE** file from:

<https://www.pass4itsure.com/4a0-106.html>

100% Passing Guarantee  
100% Money Back Assurance

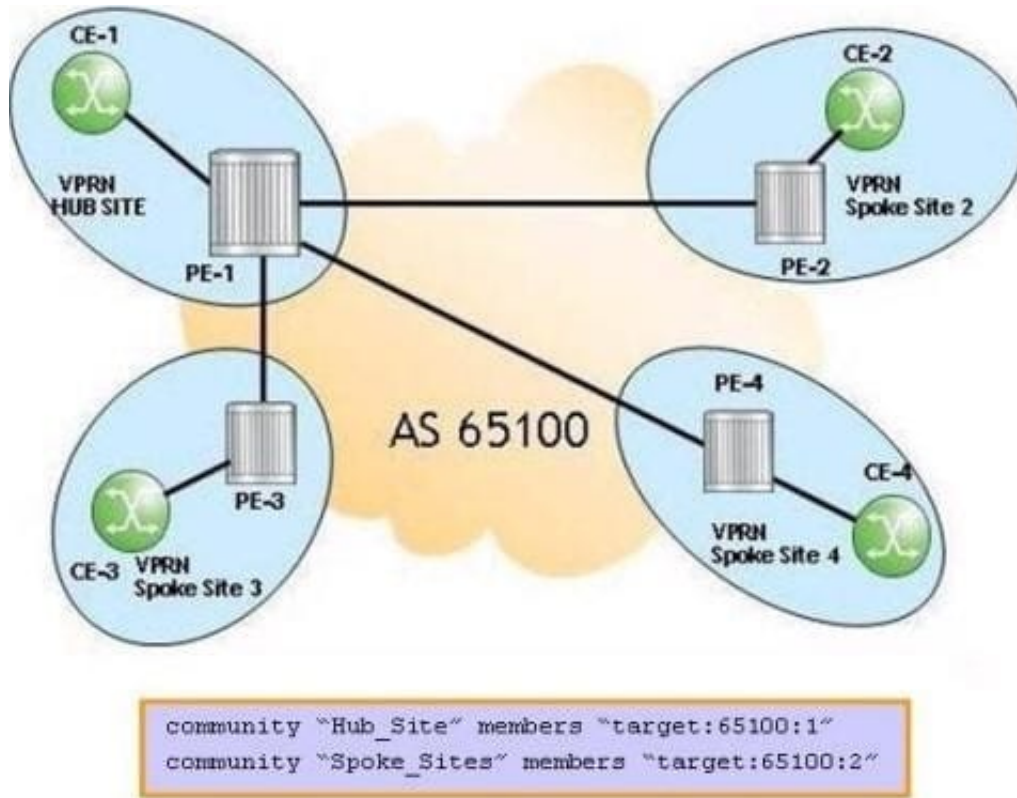
Following Questions and Answers are all new published by Alcatel-Lucent Official Exam Center

- ⚙️ **Instant Download** After Purchase
- ⚙️ **100% Money Back** Guarantee
- ⚙️ **365 Days** Free Update
- ⚙️ **800,000+** Satisfied Customers



**QUESTION 1**

Click the exhibit.



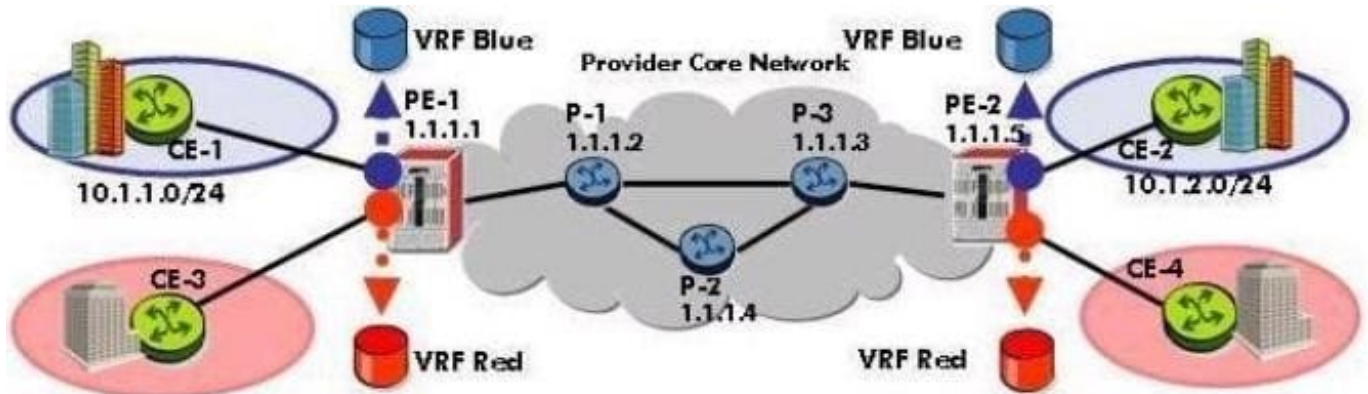
For the PE hub and spoke VPRN, on which PE(s) should the VPRN service command "vrf-target export target:65100:1 import target:65100:2" be configured?

- A. PE1
- B. PE2, PE3 and PE4
- C. PE1, PE2, PE3 and PE4
- D. This command is not required for the configuration of this PE hub and spoke VPRN.

Correct Answer: A

**QUESTION 2**

Click the exhibit.



```
*A:PE-1# configure service vprn 20 customer 101 create
*A:PE-1>config>service>vprn$ description "VPRN Blue"
*A:PE-1>config>service>vprn$ route-distinguisher 65100:101
*A:PE-1>config>service>vprn$ vrf-target target:65100:101
*A:PE-1>config>service>vprn$ auto-bind ldp
*A:PE-1>config>service>vprn$ router-id 1.1.1.1
*A:PE-1>config>service>vprn$ interface to-CE-1 create
*A:PE-1>config>service>vprn>if$ address 10.1.6.1/27
*A:PE-1>config>service>vprn>if$ sap 1/1/2 create
*A:PE-1>config>service>vprn>if$ exit
*A:PE-1>config>service>vprn$
```

What is wrong with the VPRN configuration applied on this Alcatel-Lucent 7750 SR?

- A. The VPRN ID must match the value used in the vrf-target command.
- B. The VPRN ID must match the value used in the route-distinguisher command.
- C. The router-id command should not be used in this context.
- D. The "no shutdown" command must be configured for the VPRN to be operationally UP.

Correct Answer: D

### QUESTION 3

Which method does the Alcatel-Lucent 7750 SR use for the allocation of VPRN labels?

- A. One label per route
- B. One label per next-hop
- C. One label per VRF
- D. One label per prefix
- E. One label per tunnel

Correct Answer: C

**QUESTION 4**

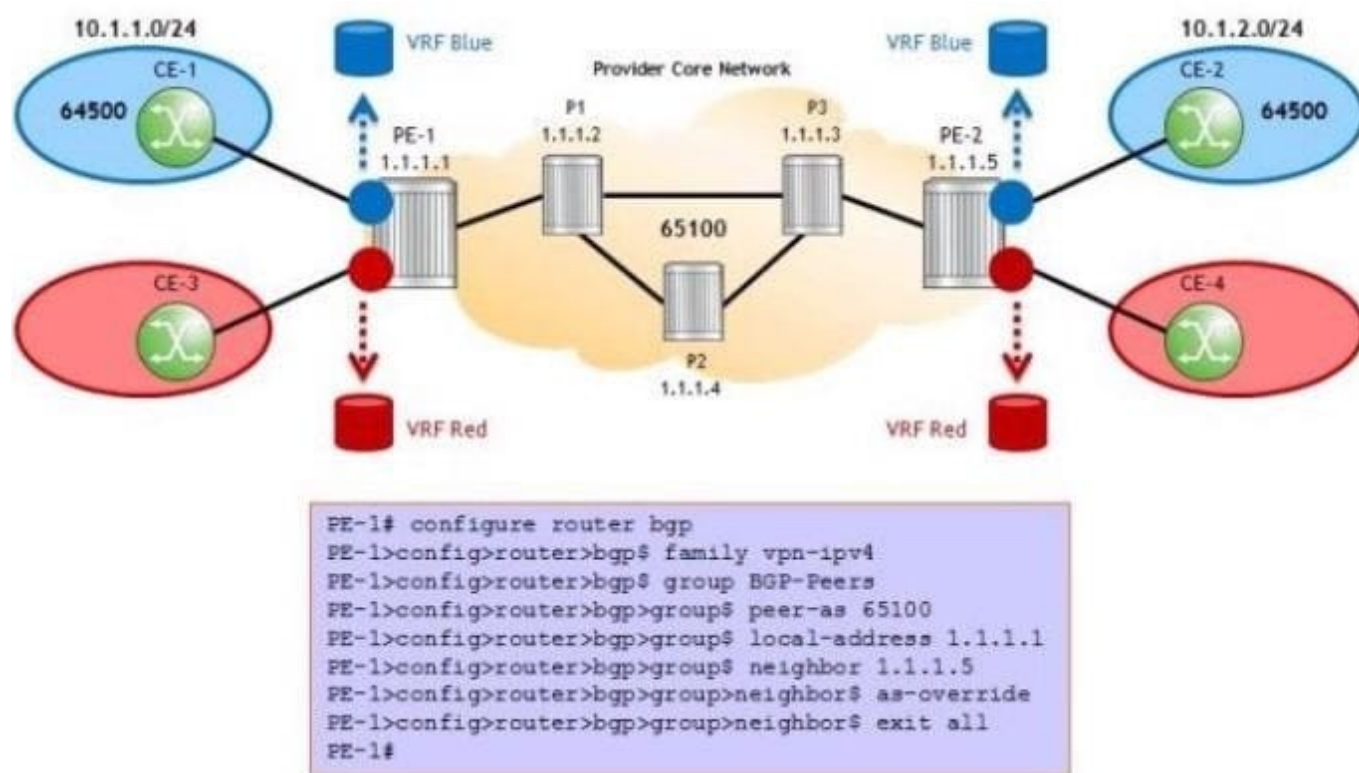
In a VPRN the PE device is configured to run which of the following protocols? (Choose three.)

- A. MP-BGP for exchanging customer routes with other PEs
- B. A routing protocol for exchanging customer routes with the CE
- C. MPLS for exchanging labels with other provider core devices
- D. MPLS for exchanging labels with the CE devices
- E. Targeted LDP for exchanging VPRN labels with other PE devices
- F. A label signaling protocol for defining transport tunnels between PE and CE devices

Correct Answer: ABC

**QUESTION 5**

Click the exhibit.



The AS-override method is used to prevent BGP loops in the blue customer VPRN. Which statement about the configuration is TRUE?

- A. the configuration is complete and correct.
- B. \"as-override\" should be configured under the BGP context.



C. \\as-override\\' should be configured under the group context.

D. \\as-override\\' should not be part of this configuration.

Correct Answer: D

[4A0-106 Practice Test](#)

[4A0-106 Study Guide](#)

[4A0-106 Braindumps](#)