



4A0-106^{Q&As}

Alcatel-Lucent Virtual Private Routed Networks

Pass Alcatel-Lucent 4A0-106 Exam with 100% Guarantee

Free Download Real Questions & Answers **PDF** and **VCE** file from:

<https://www.pass4itsure.com/4a0-106.html>

100% Passing Guarantee
100% Money Back Assurance

Following Questions and Answers are all new published by Alcatel-Lucent Official Exam Center

- ⚙️ **Instant Download** After Purchase
- ⚙️ **100% Money Back** Guarantee
- ⚙️ **365 Days** Free Update
- ⚙️ **800,000+** Satisfied Customers



**QUESTION 1**

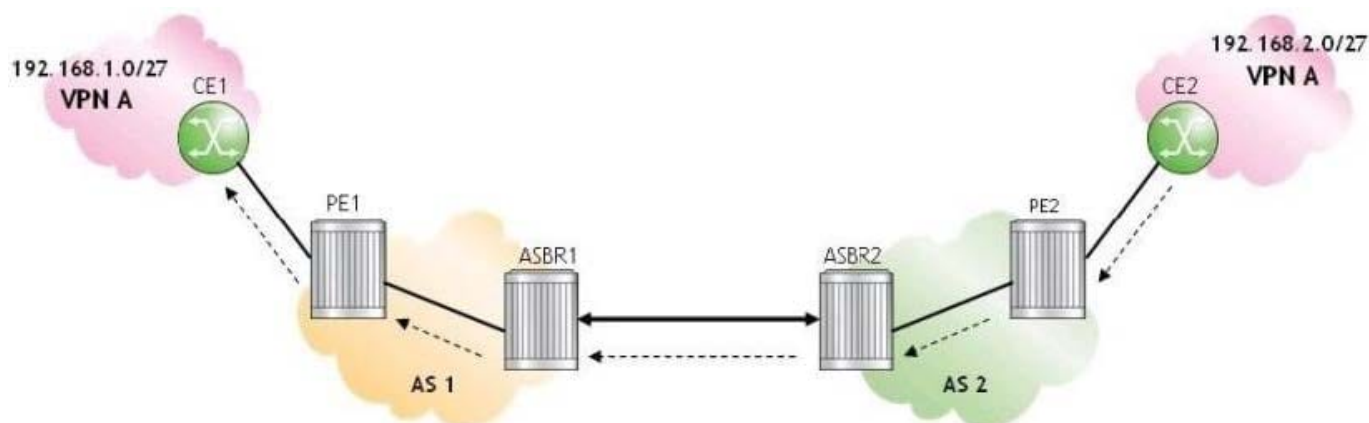
Which of the following about inter-AS model A VPRN is FALSE?

- A. It requires the configuration of back-to-back VRFs between ASBR routers in different autonomous systems
- B. It is the most scalable of the Inter-AS models.
- C. Most routers that support VPRN functionality support model A by default.
- D. It uses conventional eBGP to distribute unlabeled IPv4 routes between ASBR routers in different autonomous systems.

Correct Answer: B

QUESTION 2

Click the exhibit.



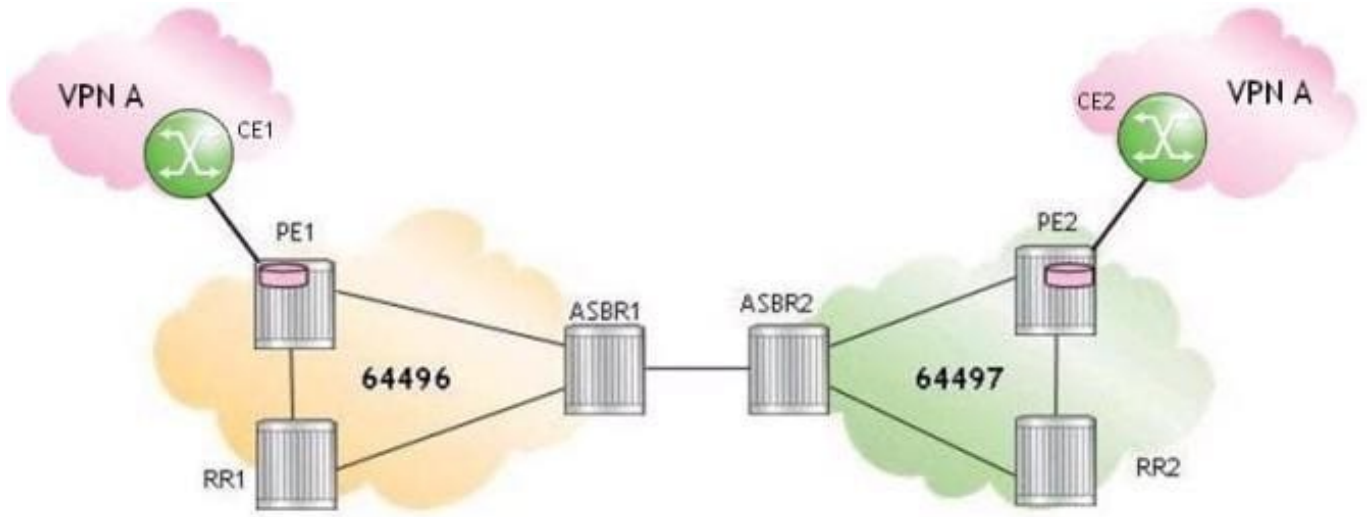
For the inter-AS model A VPRN, which of the following is FALSE when CE2 sends an IP packet to 192.168.1.1?

- A. CE2 forwards an unlabeled IP packet to PE2 via the VPRN interface.
- B. PE2 pushes two labels on the IP packet and label-switches the packet to ASBR2.
- C. ASBR2 pops one label from the IP packet and label-switches it to ASBR1.
- D. ASBR1 pushes two labels on the IP packet and label-switches the packet to PE1.

Correct Answer: C

QUESTION 3

Click the exhibit.



For the inter-AS model C VPRN, which of the following statements about a data packet sent from CE1 to CE2 is TRUE?

- A. PE1 sends the data packet with three labels: the bottom label is a service label, the middle label is a BGP label, and the top label is an LDP label.
- B. ASBR1 sends the data packet with one label: the BGP label.
- C. ASBR1 sends the data packet with one label: the service label.
- D. ASBR2 sends the data packet with three labels: the bottom label is a service label, the middle label is a BGP label, and the top label is an LDP label.

Correct Answer: A

QUESTION 4

For a Carrier Supporting Carrier (CSC) VPRN where the customer carrier is a BGP/MPLS VPN Service Provider (SP), which of the following is FALSE?

- A. The customer carrier network must be MPLS-enabled.
- B. If the customer carrier offers VPRN services, PE routers residing in different customer carrier sites must run iBGP between them.
- C. The customer carrier provides Layer 2 and Layer 3 services to its end-customers.
- D. A single CSC VPRN is configured on the network provider to support all services offered by the customer carrier.

Correct Answer: B

QUESTION 5

When would it be appropriate to use the as-override command?



```
PE-1# show router 1 bgp neighbor
```

```
-----  
Peer : 10.16.1.2          Group : BGP-neighbors  
-----  
Peer AS      : 65200          Peer Port      : 49620  
Peer Address : 10.16.1.2  
Local AS     : 65100          Local Port     : 179  
Local Address : 10.16.1.1  
Peer Type    : External  
State        : Established    Last State     : Established  
Local Family : IPv4           Remote Family  : IPv4  
-----
```

- A. When sites of different VPRN customers use the same BGP AS number
- B. When sites of the same VPRN customer use the same BGP AS number
- C. When sites of different VPRN customers use different BGP AS numbers
- D. When sites of the same VPRN customer use different BGP AS numbers
- E. When the customer site AS number is the same as the provider AS number

Correct Answer: B

[Latest 4A0-106 Dumps](#)

[4A0-106 VCE Dumps](#)

[4A0-106 Study Guide](#)