



4A0-105^{Q&As}

Alcatel-Lucent Virtual Private LAN Services

Pass Alcatel-Lucent 4A0-105 Exam with 100% Guarantee

Free Download Real Questions & Answers **PDF** and **VCE** file from:

<https://www.pass4itsure.com/4a0-105.html>

100% Passing Guarantee
100% Money Back Assurance

Following Questions and Answers are all new published by Alcatel-Lucent Official Exam Center

-  **Instant Download** After Purchase
-  **100% Money Back** Guarantee
-  **365 Days** Free Update
-  **800,000+** Satisfied Customers



**QUESTION 1**

Click on the exhibit below.

```
PE1>service# vpls 1 customer 1 m-vpls create
PE1>service>vpls# mesh-sdp 500:1 create
PE1>service>vpls>mesh-sdp# exit
PE1>service>vpls# no shutdown
PE1>service>vpls# spoke-sdp 900:1 create
PE1>service>vpls>spoke-sdp# exit
PE1>service>vpls# exit

PE1>service# vpls 100 customer 1 create
PE1>service>vpls# mesh-sdp 500:100 create
PE1>service>vpls>mesh-sdp# exit
PE1>service>vpls# no shutdown
PE1>service>vpls# mesh-sdp 900:100 create
PE1>service>vpls# exit
```

Given the following configuration, which service type will VPLS 1 and VPLS 100 be displayed as with the "show service service-using" command?

- A. VPLS 1 will be displayed as mVPLS and VPLS 100 will be displayed as VPLS.
- B. VPLS 1 will be displayed as mVPLS and VPLS 100 will be displayed as uVPLS
- C. VPLS 1 will be displayed as VPLS and VPLS 100 will be displayed as VPLS.
- D. VPLS 1 will displayed VPLS and VPLS 100 will be displayed as uVPLS.

Correct Answer: A

QUESTION 2

IEEE 802.3ah frames must be untagged.

- A. TRUE
- B. FALSE

Correct Answer: A

QUESTION 3

Click on the exhibit below.



```
*A:PE1# show service id 61 sdp 3 detail | match Pw  
Peer Pw Bits          : pwFwdingStandby
```

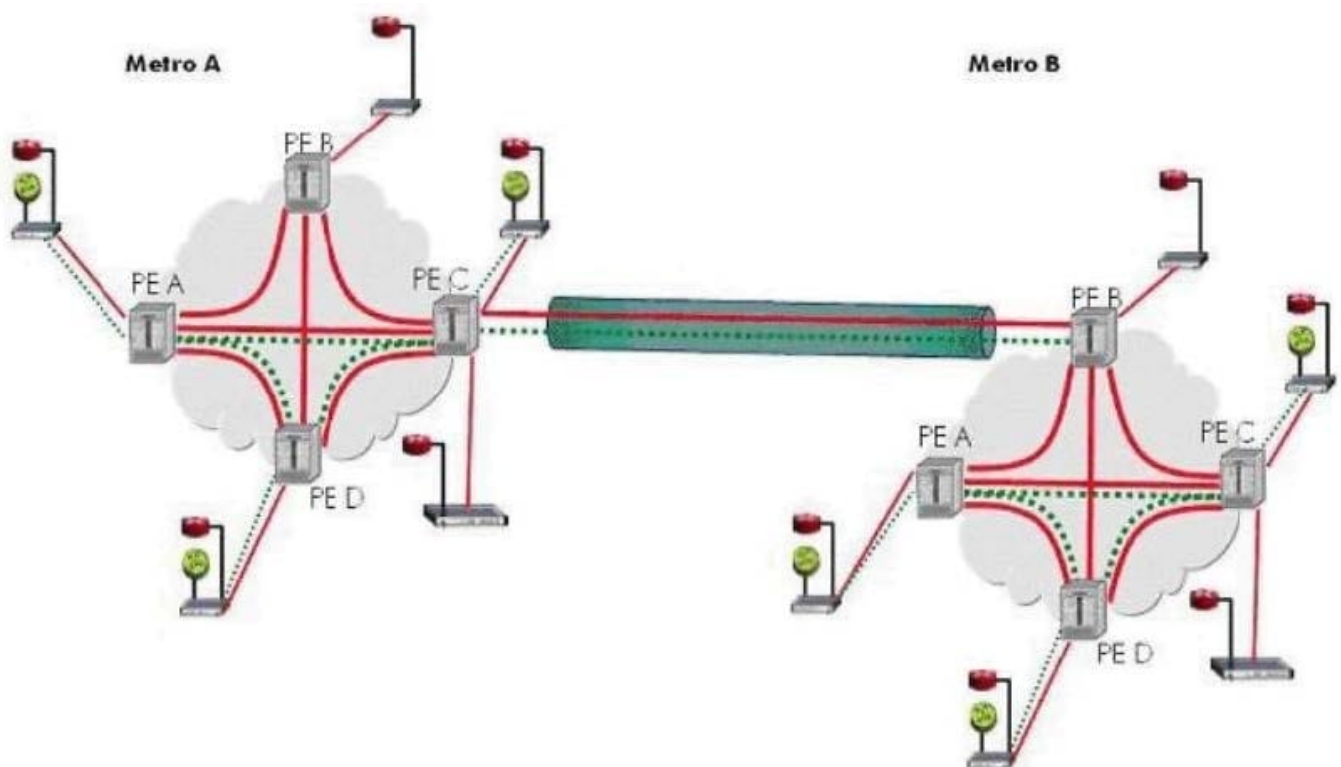
The MDU attached to this PE has been configured with active/standby SDP's configuration option has been configured for the PE to recognize that this SDP is in standby mode?

- A. On the PE the endpoint has been configured with "supress-standby-signalling"
- B. On the PE the endpoint has been configured with "no supress-standby-signalling"
- C. On the MDU the endpoint has been configured with "supress-standby-signalling"
- D. On the MDU the endpoint has been configured with "no supress-standby-signalling1"

Correct Answer: D

QUESTION 4

Click on the exhibit below.



A new site is added to PE-D of Metro B. Which of the following statement below is true?

- A. If a spoke-SDP is configured between the new site and PE-D no further SDPs will be required.

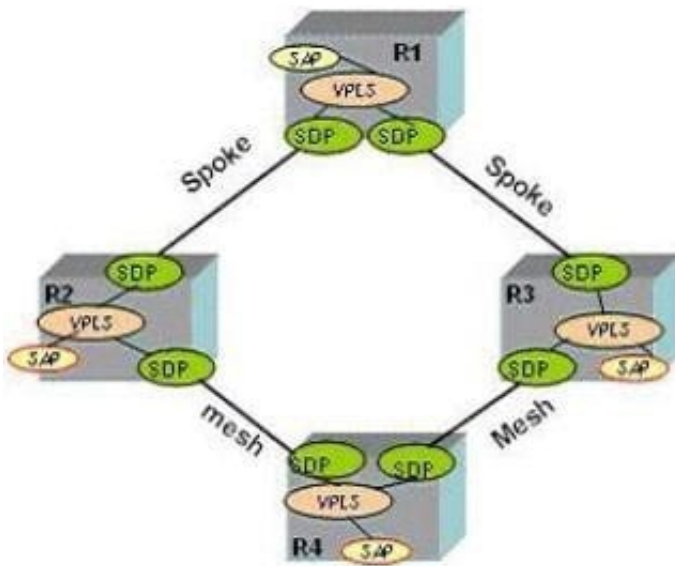


- B. If a mesh- SDP is configured between the new site and PE-D no further SDPs will be required.
- C. A mesh- SDP must be configured between the new site and all other PEs within Metro B.
- D. A spoke- SDP must be configured between the new site and all other PEs within Metro B.

Correct Answer: A

QUESTION 5

Click on the exhibit below.



Which SDP on R3 will MAC addresses be associated with for devices behind R2?

- A. It depends if traffic is received via R4 or R1 from devices behind R2.
- B. The devices cannot communicate based on the configuration in the diagram so there will be no mac address association.
- C. Devices behind R2 will be associated with the sdp between R3 and R1.
- D. Devices behind R2 will be associated with the sdp between R3 and R4.

Correct Answer: C

[Latest 4A0-105 Dumps](#)

[4A0-105 Study Guide](#)

[4A0-105 Braindumps](#)