



# 4A0-105<sup>Q&As</sup>

Alcatel-Lucent Virtual Private LAN Services

## Pass Alcatel-Lucent 4A0-105 Exam with 100% Guarantee

Free Download Real Questions & Answers **PDF** and **VCE** file from:

<https://www.pass4itsure.com/4a0-105.html>

100% Passing Guarantee  
100% Money Back Assurance

Following Questions and Answers are all new published by Alcatel-Lucent Official Exam Center

-  **Instant Download** After Purchase
-  **100% Money Back** Guarantee
-  **365 Days** Free Update
-  **800,000+** Satisfied Customers





### QUESTION 1

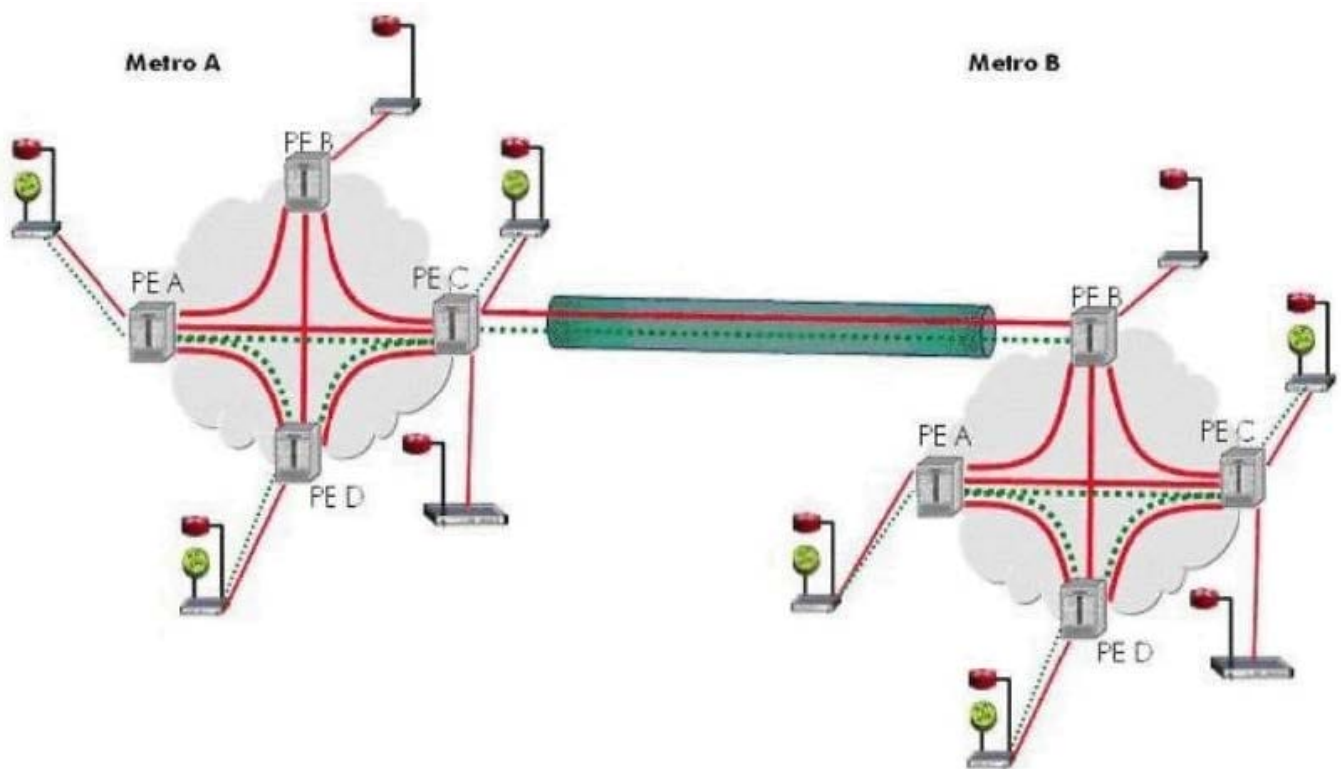
What option is available when using PBB to reduce the amount of required VPLS services?

- A. The Alcatel-Lucent 7750 SR supports 1:1 mapping of I-VPLS services to B-VPLS services.
- B. The Alcatel-Lucent 7750 SR supports 1:1 and M:1 mapping of I-VPLS services to B-VPLS services.
- C. The Alcatel-Lucent 7750 SR supports the mapping of multiple, standard VPLS services to B-VPLS services.
- D. The Alcatel-Lucent 7750 SR supports the mapping of multiple, standard VPLS services to I-VPLS services.

Correct Answer: B

### QUESTION 2

Click on the exhibit below.



A new site is added to PE-D of Metro B. Which of the following statement below is true?

- A. If a spoke-SDP is configured between the new site and PE-D no further SDPs will be required.
- B. If a mesh- SDP is configured between the new site and PE-D no further SDPs will be required.
- C. A mesh- SDP must be configured between the new site and all other PEs within Metro B.
- D. A spoke- SDP must be configured between the new site and all other PEs within Metro B.



Correct Answer: A

---

### QUESTION 3

What is the MTU impact on the SDP path-mtu if fast reroute, one-to-one mode is implemented on the LSP?

- A. There will be no impact on the path-mtu.
- B. The path-mtu will decrease by 4 bytes.
- C. The path-mtu will increase by 4 bytes.
- D. The path-mtu will decrease by 8 bytes.
- E. The path-mtu will increase by 8 bytes.

Correct Answer: A

---

### QUESTION 4

In IEEE 802.1ag, which two key functions are configured on bridge ports (SAPs and SDPs) to support CFM messages? (Choose 2)

- A. MEP
- B. MAP
- C. MIP
- D. MUP

Correct Answer: AC

---

### QUESTION 5

The following question relates to this command syntax: "config>service# vpls 9000 customer 6 create". Which of the following statements are correct? (Choose 2)

- A. The customer-id in this command is 9000.
- B. The service-id in this command is 9000.
- C. This value 9000 should be unique across the network as a best practice.
- D. The vc-id will be 6 for the service by default.
- E. The egress vc-label will be 9000.

Correct Answer: BC

---



VCE & PDF

Pass4itSure.com

<https://www.pass4itsure.com/4a0-105.html>

2024 Latest pass4itsure 4A0-105 PDF and VCE dumps Download

---

[4A0-105 Practice Test](#)

[4A0-105 Study Guide](#)

[4A0-105 Braindumps](#)