



4A0-102^{Q&As}

Alcatel-Lucent Border Gateway Protocol

Pass Alcatel-Lucent 4A0-102 Exam with 100% Guarantee

Free Download Real Questions & Answers **PDF** and **VCE** file from:

<https://www.pass4itsure.com/4a0-102.html>

100% Passing Guarantee
100% Money Back Assurance

Following Questions and Answers are all new published by Alcatel-Lucent Official Exam Center

-  **Instant Download** After Purchase
-  **100% Money Back** Guarantee
-  **365 Days** Free Update
-  **800,000+** Satisfied Customers





QUESTION 1

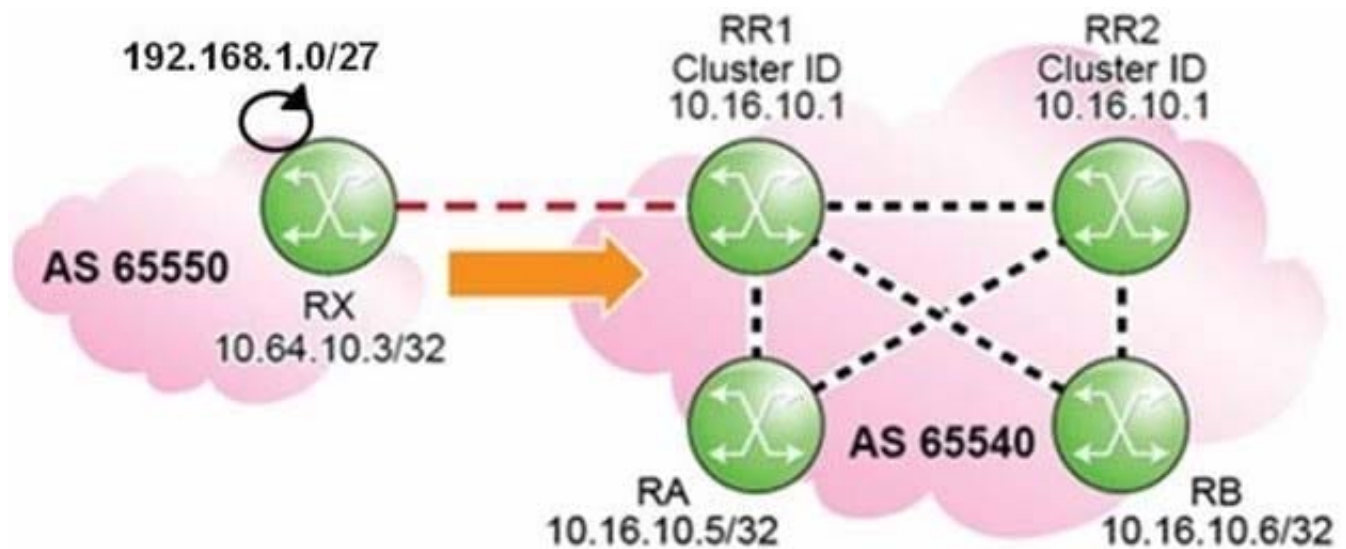
An autonomous system has 7 routers configured with BGP. How many iBGP sessions are required for a fully meshed configuration?

- A. 7
- B. 13
- C. 21
- D. 42

Correct Answer: C

QUESTION 2

Click the exhibit.



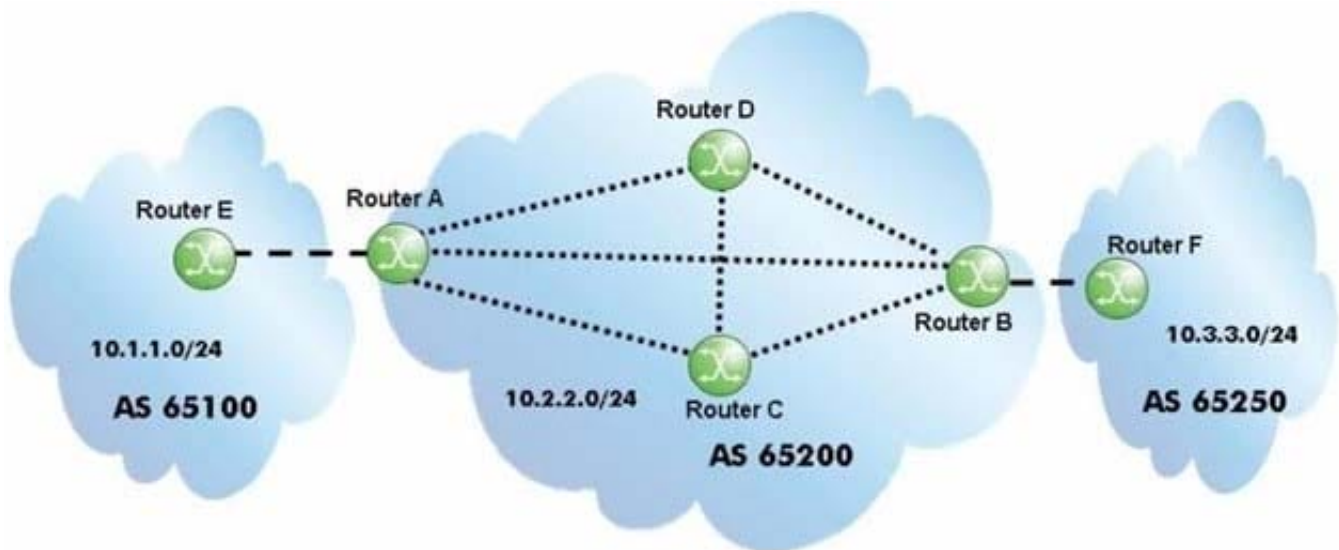
Routers RR1 and RR2 are route reflectors with the same cluster-ID. How many updates for prefix 192.168.1.0/27 are received at router RR1?

- A. 1
- B. 2
- C. 3
- D. 4

Correct Answer: A

**QUESTION 3**

Click the exhibit.



Over which BGP session will router B learn the 10.1.1.0/24 prefix?

- A. The session between router A and router B.
- B. The session between router C and router B.
- C. The session between router D and router B.
- D. Router B will learn the prefix over all of the sessions, then it will choose the best route.

Correct Answer: A

QUESTION 4

Which of the following statements regarding route reflectors is TRUE?

- A. Route reflectors propagate BGP learned routes to their clients.
- B. Route reflectors require "n" iBGP sessions, where "n" is the number of BGP routers in the AS.
- C. Route reflectors disable iBGP split horizon for all iBGP peers in the AS.
- D. Route reflectors do not work in conjunction with confederations.

Correct Answer: A

QUESTION 5

An Alcatel-Lucent 7750 SR has the BGP configuration shown below. Assuming the router has established BGP sessions to routers R1 and R2, which of the following is TRUE?



```
group "BGP Peers"  
  peer-as 65540  
  neighbor 10.16.10.1  
    description "R1"  
    peer-as 65550  
  exit  
  neighbor 10.16.10.2  
    shutdown  
    description "R2"  
    peer-as 65560  
  exit  
exit
```

- A. Both neighbors R1 and R2 should be part of AS 65540.
- B. Neighbor R1 should be part of AS 65550, while neighbor R2 should be part of AS 65540.
- C. Neighbor R1 should be part of AS 65550, while neighbor R2 should be part of AS 65560.
- D. Both neighbors R1 and R2 should be part of AS 65560.

Correct Answer: C

[4A0-102 PDF Dumps](#)

[4A0-102 VCE Dumps](#)

[4A0-102 Braindumps](#)