



4A0-102^{Q&As}

Alcatel-Lucent Border Gateway Protocol

Pass Alcatel-Lucent 4A0-102 Exam with 100% Guarantee

Free Download Real Questions & Answers **PDF** and **VCE** file from:

<https://www.pass4itsure.com/4a0-102.html>

100% Passing Guarantee
100% Money Back Assurance

Following Questions and Answers are all new published by Alcatel-Lucent Official Exam Center

-  **Instant Download** After Purchase
-  **100% Money Back** Guarantee
-  **365 Days** Free Update
-  **800,000+** Satisfied Customers



**QUESTION 1**

BGP is configured on two peers, routers A and B. Router A is configured with a Hold Time timer of 60 seconds and a Keepalive timer of 25 seconds. Router B is configured with a Hold Time timer of 90 seconds and a Keepalive timer of 70 seconds.

What will the active Keepalive timer be on router B?

- A. 70 seconds
- B. 25 seconds
- C. 20 seconds
- D. 30 seconds

Correct Answer: C

QUESTION 2

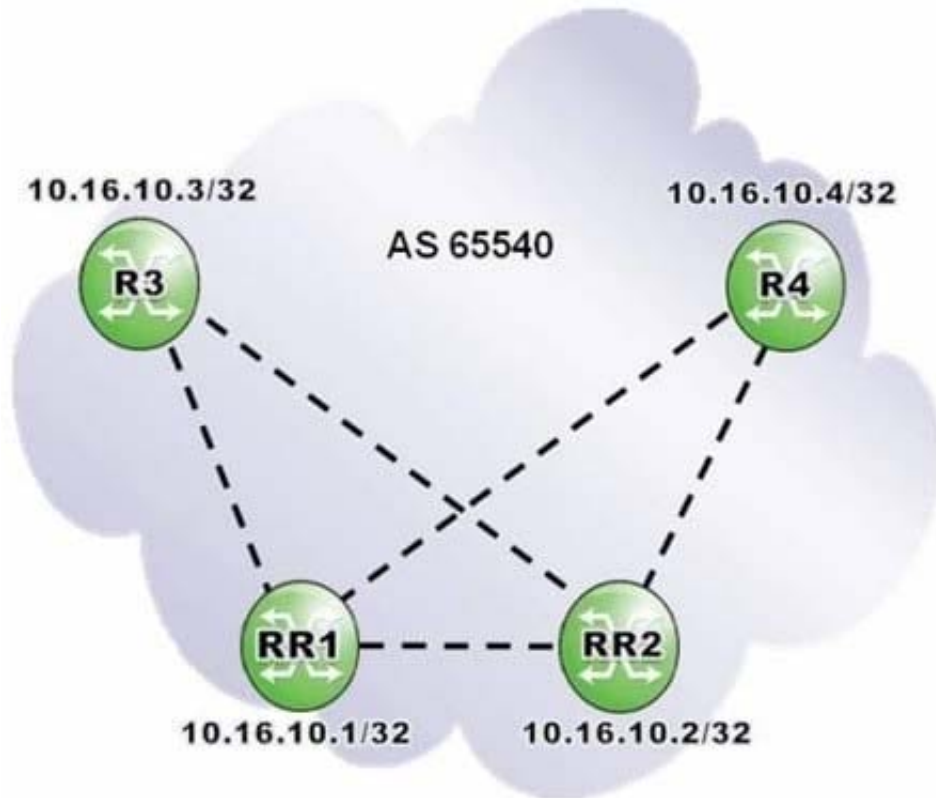
An Alcatel-Lucent 7750 SR receives a route from an eBGP peer without a MED. What MED value is sent to iBGP peers?

- A. 100
- B. 250
- C. The IGP cost
- D. None

Correct Answer: D

QUESTION 3

Click the exhibit.



Routers RR1 and RR2 are redundant route reflectors for clients R3 and R4. Which of the following is a valid configuration on router R3?



A. RR1>config>router>bgp# info

```
-----  
group "AS 65540 iBGP"  
  cluster 10.16.10.1  
  peer-as 65540  
  neighbor 10.16.10.2  
  exit  
  neighbor 10.16.10.3  
  exit  
  neighbor 10.16.10.4  
  exit  
exit
```

B. RR1>config>router>bgp# info

```
-----  
group "AS 65540 iBGP"  
  peer-as 65540  
  neighbor 10.16.10.2  
    cluster 10.16.10.2  
  exit  
  neighbor 10.16.10.3  
    cluster 10.16.10.1  
  exit  
  neighbor 10.16.10.4  
    cluster 10.16.10.1  
  exit  
exit
```

C. RR1>config>router>bgp# info

```
-----  
group "AS 65540 iBGP"  
  peer-as 65540  
  neighbor 10.16.10.2  
  exit  
  neighbor 10.16.10.3  
    cluster 10.16.10.1  
  exit  
  neighbor 10.16.10.4  
    cluster 10.16.10.1  
  exit  
exit
```

D. RR1>config>router>bgp# info

```
-----  
group "AS 65540 iBGP"  
  peer-as 65540  
  neighbor 10.16.10.3  
    cluster 10.16.10.1  
  exit  
  neighbor 10.16.10.4  
    cluster 10.16.10.1  
  exit  
exit
```

A. Option A



- B. Option B
- C. Option C
- D. Option D

Correct Answer: C

QUESTION 4

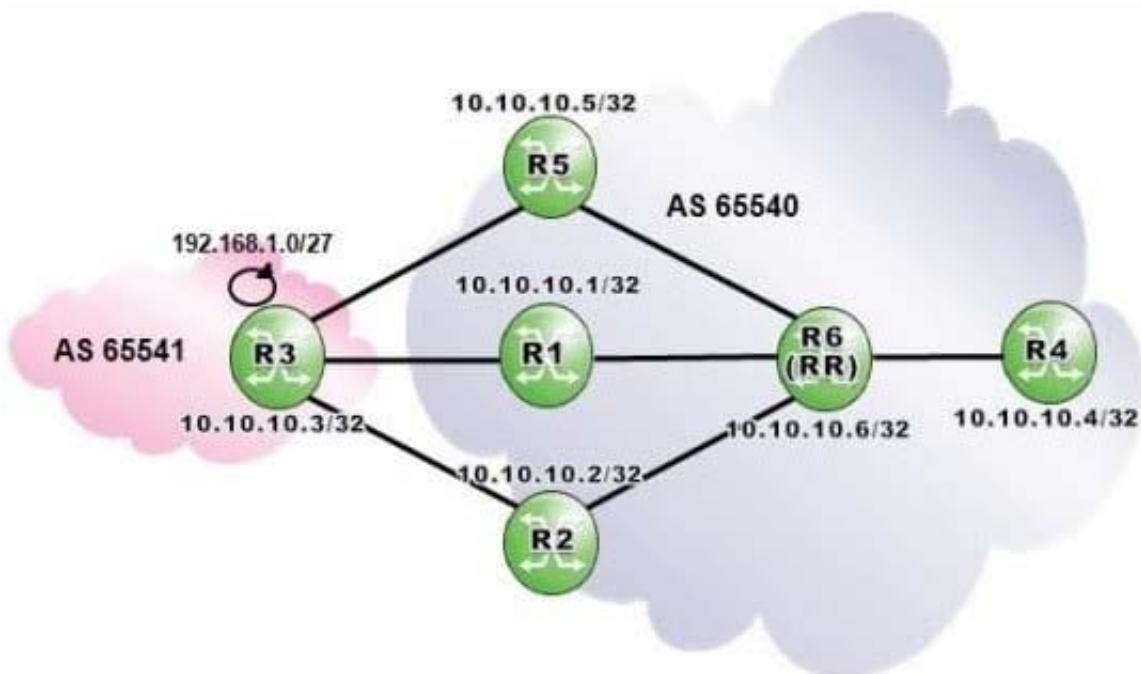
Which of the following regarding "well-known discretionary" BGP attributes is TRUE?

- A. They must be recognized by all peers and included in all BGP updates.
- B. They are discarded if not recognized by the recipient.
- C. They must be recognized by all peers and optionally included in BGP updates.
- D. The receiving router sends a notification if a well-known discretionary attribute is not present in an update.

Correct Answer: C

QUESTION 5

Click the exhibit.



Router R6 is a route reflector with clients R1, R2, R4 and R5. Router R4 receives three routes from router R6 and is configured with ECMP 3. Given the following BGP configuration on router R4, how many primary and backup paths will be present in router R4's BGP routing table?



```
R4>config>router>bgp# info
```

```
-----  
multipath 2  
add-paths  
  ipv4 send 3 receive  
exit  
backup-path ipv4  
group "IBGP"  
  peer-as 65540  
  neighbor 10.10.10.6  
exit  
exit
```

- A. Three primary paths,
- B. Two primary paths and one backup path.
- C. One primary path and two backup paths.
- D. One primary path and one backup path.

Correct Answer: B

[4A0-102 PDF Dumps](#)

[4A0-102 VCE Dumps](#)

[4A0-102 Exam Questions](#)