



4A0-101^{Q&As}

Alcatel-Lucent Interior Routing Protocols and High Availability

Pass Alcatel-Lucent 4A0-101 Exam with 100% Guarantee

Free Download Real Questions & Answers **PDF** and **VCE** file from:

<https://www.pass4itsure.com/4a0-101.html>

100% Passing Guarantee
100% Money Back Assurance

Following Questions and Answers are all new published by Alcatel-Lucent Official Exam Center

-  **Instant Download** After Purchase
-  **100% Money Back** Guarantee
-  **365 Days** Free Update
-  **800,000+** Satisfied Customers





QUESTION 1

Which OSPFv3 LSA type is similar in function to the OSPFv2 Type 3 LSA?

- A. Link
- B. Intra-Area Prefix
- C. Inter-Area Prefix
- D. Inter-Area Router

Correct Answer: C

QUESTION 2

Click the exhibit button.

Exhibit 4.6.g

```

*A:R3>config>router>ospf# show router route-table
Route Table (Router: Base)
-----
Dest Prefix          Type Proto Age    Pref
  Next Hop[Interface Name]      Metric
0.0.0.0/0            Remote OSPF 00h00m23s 10
  10.1.1.3.1          101
10.1.3.0/27         Local Local 05d10h00m 0
  toR1                0
10.10.10.3/32       Local Local 0144d08h 0
  system              0
No. of Routes: 3

*A:R2# show router route-table 192.168.0.0/16 longer
Route Table (Router: Base)
-----
Dest Prefix          Type Proto Age    Pref
  Next Hop[Interface Name]      Metric
192.168.1.0/24       Local Local 01h09m41s 0
  loop1              0
192.168.2.0/24       Local Local 01h09m41s 0
  loop2              0
192.168.3.0/24       Local Local 01h09m40s 0
  loop3              0
192.168.4.0/24       Local Local 01h09m40s 0
  loop4              0
No. of Routes: 4
  
```

Given the topology and the show commands, and assuming that router R2 advertises all of its loopbacks into OSPF, what is the correct router R1 configuration?



```
A. *A:R1>config>router>ospf# info
-----
area 0.0.0.0
 interface "toR2"
   interface-type point-to-point
 exit
exit
area 0.0.0.1
 nssa
  originate-default-route
  no summaries
 exit
 interface "toR3"
   interface-type point-to-point
 exit
exit
-----
*A:R1>config>router>ospf#

B. *A:R1>config>router>ospf# info
-----
area 0.0.0.0
 interface "toR2"
   interface-type point-to-point
 exit
exit
area 0.0.0.1
 nssa
  originate-default-route
 exit
 interface "toR3"
   interface-type point-to-point
 exit
exit
-----
*A:R1>config>router>ospf#

C. *A:R1>config>router>ospf# info
-----
area 0.0.0.0
 interface "toR2"
   interface-type point-to-point
 exit
exit
area 0.0.0.1
 area-range 192.168.0.0/16 advertise
 interface "toR3"
   interface-type point-to-point
 exit
exit
-----
*A:R1>config>router>ospf#

D. *A:R1>config>router>ospf# info
-----
area 0.0.0.0
 area-range 192.168.0.0/16 advertise
 interface "toR2"
   interface-type point-to-point
 exit
exit
area 0.0.0.1
 interface "toR3"
   interface-type point-to-point
 exit
exit
-----
*A:R1>config>router>ospf#
```

A. Option A

B. Option B

C. Option C

D. Option D

Correct Answer: A

QUESTION 3

Select the answer below that correctly lists the 5 different OSPF packet types.

A. Hello, Link State Update, Link State Packet, Link State Acknowledgement, Database Descriptor



- B. Link State Update, Link State Refresh, Link State Acknowledgement, Database Descriptor, Notification
- C. Hello, Link State Refresh, Link State Update, Link State Acknowledgement, Link State Authentication
- D. Hello, Link State Update, Link State Request, Link State Acknowledgement, Database Descriptor

Correct Answer: D

QUESTION 4

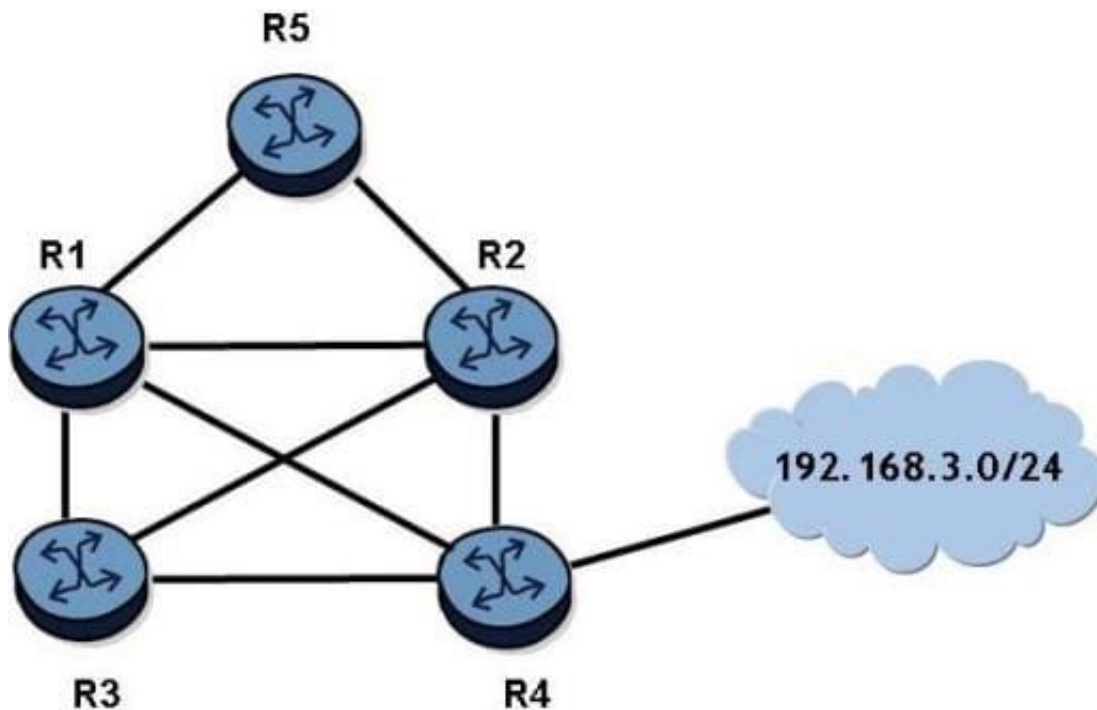
Which of the following statements best describes an OSPF type 3 LSA?

- A. An OSPF type 3 LSA is an intra-area LSA, generated by the ABR only when route summarization is configured.
- B. An OSPF type 3 LSA is an inter-area LSA, generated by the ABR only when route summarization is configured.
- C. An OSPF type 3 LSA is an inter-area LSA, generated by an ASBR to describe external routes.
- D. An OSPF type 3 LSA is an inter-area LSA, generated by the ABR to describe a route to neighbors outside the area.

Correct Answer: D

QUESTION 5

Click on the exhibit.



OSPF is operational on all links in the network diagram, all links have the same cost and all routers are configured with an ECMP value of 4. Router R4 advertises the prefix 192.168.3.0/24 into OSPF.



How many entries for prefix 192.168.3.0/24 will be in router R1's routing table?

- A. 0
- B. 1
- C. 2
- D. 3
- E. 4

Correct Answer: B

[Latest 4A0-101 Dumps](#)

[4A0-101 PDF Dumps](#)

[4A0-101 VCE Dumps](#)