



# 4A0-100<sup>Q&As</sup>

Alcatel-Lucent Scalable IP Networks

## Pass Alcatel-Lucent 4A0-100 Exam with 100% Guarantee

Free Download Real Questions & Answers **PDF** and **VCE** file from:

<https://www.pass4itsure.com/4a0-100.html>

100% Passing Guarantee  
100% Money Back Assurance

Following Questions and Answers are all new published by Alcatel-Lucent Official Exam Center

-  **Instant Download** After Purchase
-  **100% Money Back** Guarantee
-  **365 Days** Free Update
-  **800,000+** Satisfied Customers



**QUESTION 1**

Which of the following about the displayed IP filter is TRUE?

```
*A:SRC_R1# show filter ip 1
=====
IP Filter
=====
Filter Id      : 1                      Applied       : Yes
Scope         : Template                Def. Action   : Drop
Radius Ins Pt : n/a
CrCtl. Ins Pt : n/a
Entries        : 1
Description    : new-filter
=====
Filter Match Criteria : IP
=====
Entry          : 1
Description    : (Not Specified)
Log Id         : n/a
Src. IP        : 1.2.3.0/24
Src. Port      : 666..999
Dest. IP       : 0.0.0.0/0
Dest. Port     : None
Protocol       : 6                      Dscp          : Undefined
ICMP Type      : Undefined              ICMP Code     : Undefined
Fragment       : Off                    Src Route Opt : Off
Sampling       : Off                    Int. Sampling : On
IP-Option      : 0/0                    Multiple Option: Off
TCP-syn        : Off                    TCP-ack       : Off
Option-pres    : off
Match action   : Forward
Next Hop       : Not Specified
Ing. Matches   : 0 pkts
Egr. Matches   : 0 pkts
=====
```

- A. TCP (protocol 6) packets with source IP address 1.2.3.0/24 and source port number between 666 and 999 are forwarded.
- B. TCP (protocol 6) packets with source IP address 1.2.3.0/24 and source port number between 666 and 999 are dropped.
- C. TCP (protocol 6) packets with source IP address 1.2.3.0/24 or source port number between 666 and 999 are forwarded.
- D. TCP (protocol 6) packets with destination IP address 1.2.3.0/24 and source port number between 666 and 999 are forwarded.

Correct Answer: B

**QUESTION 2**

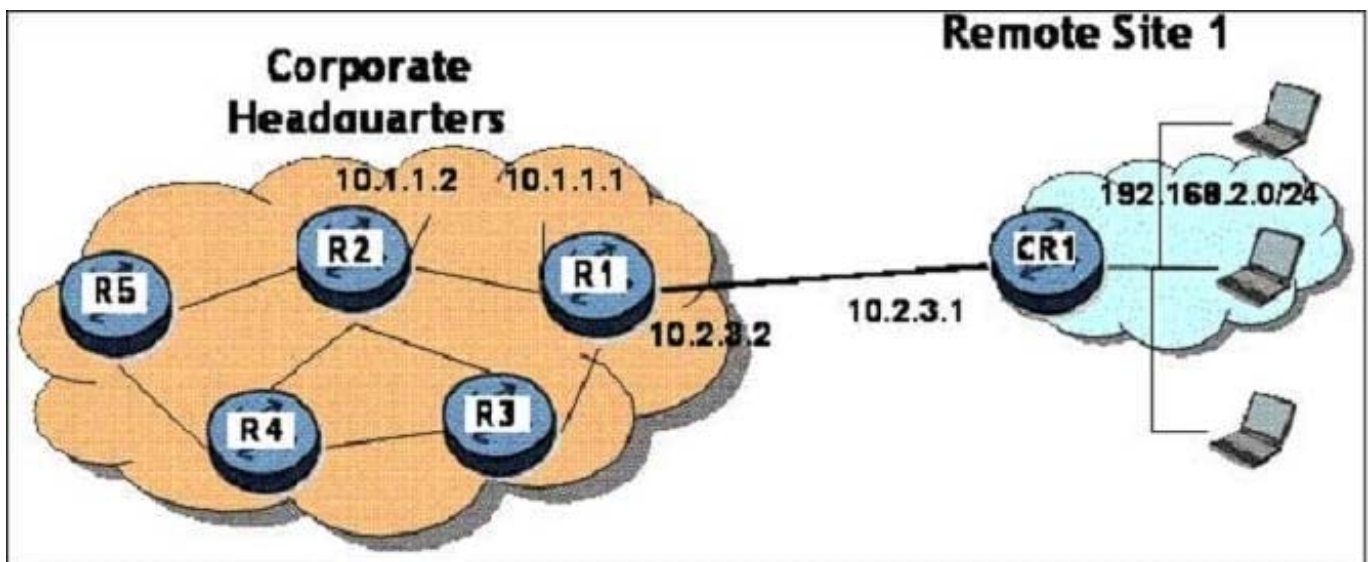
Which of the following is a characteristic of the IP layer?

- A. Provides a connectionless data transmission service.
- B. Provides physical interconnection of network devices.
- C. Provides reliable transfers of data.
- D. Provides services equivalent to the OSI data link layer.

Correct Answer: A

**QUESTION 3**

Based on the network diagram (click on the exhibit), what is the command to use on R1 to setup a static route to the network on CR1



- A. `config router static-route 192.168.2.0/24 next-hop 10.2.3.2`
- B. `config router static-route 10.2.3.1 next-hop 192.168.2.0`
- C. `config router static-route 192.168.2.0/24 next-hop 10.2.3.1`
- D. `config router static-route 10.2.3.2 next-hop 192.168.2.0`

Correct Answer: C

**QUESTION 4**

Which compact flash on a Control/Switch processor on a Nokia 7750 SR stores the runtime image and the running configuration?

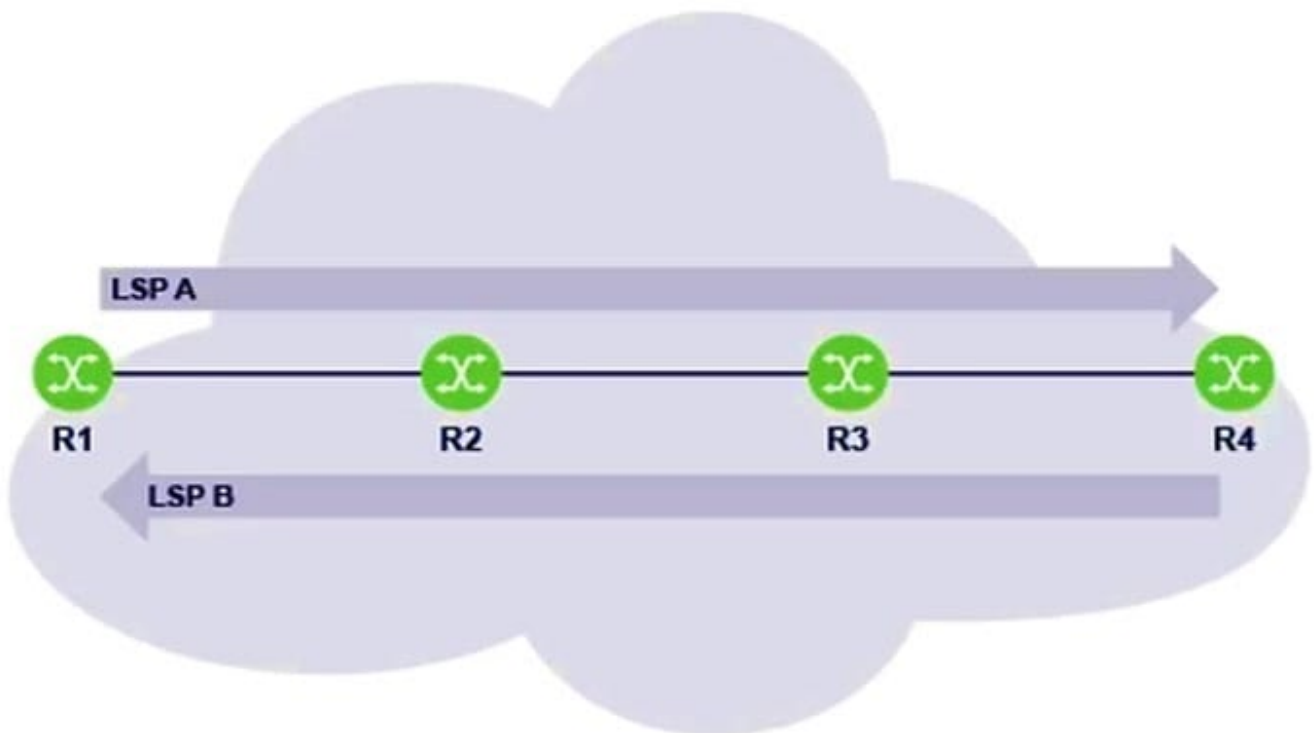


- A. SF 1
- B. SF 2
- C. SF 3
- D. Both CF1 and CF2

Correct Answer: D

### QUESTION 5

Which of the following statements about router R3 is TRUE?



- A. Router R3 is the iLER for LSP B.
- B. Router R3 is the eLER for LSP A.
- C. Router R is an LSR for both LSP A and LSP B.
- D. Router R3 is LSR for LSP A and an LER for LSP B.

Correct Answer: C