



4A0-100^{Q&As}

Alcatel-Lucent Scalable IP Networks

Pass Alcatel-Lucent 4A0-100 Exam with 100% Guarantee

Free Download Real Questions & Answers **PDF** and **VCE** file from:

<https://www.pass4itsure.com/4a0-100.html>

100% Passing Guarantee
100% Money Back Assurance

Following Questions and Answers are all new published by Alcatel-Lucent Official Exam Center

-  **Instant Download** After Purchase
-  **100% Money Back** Guarantee
-  **365 Days** Free Update
-  **800,000+** Satisfied Customers





QUESTION 1

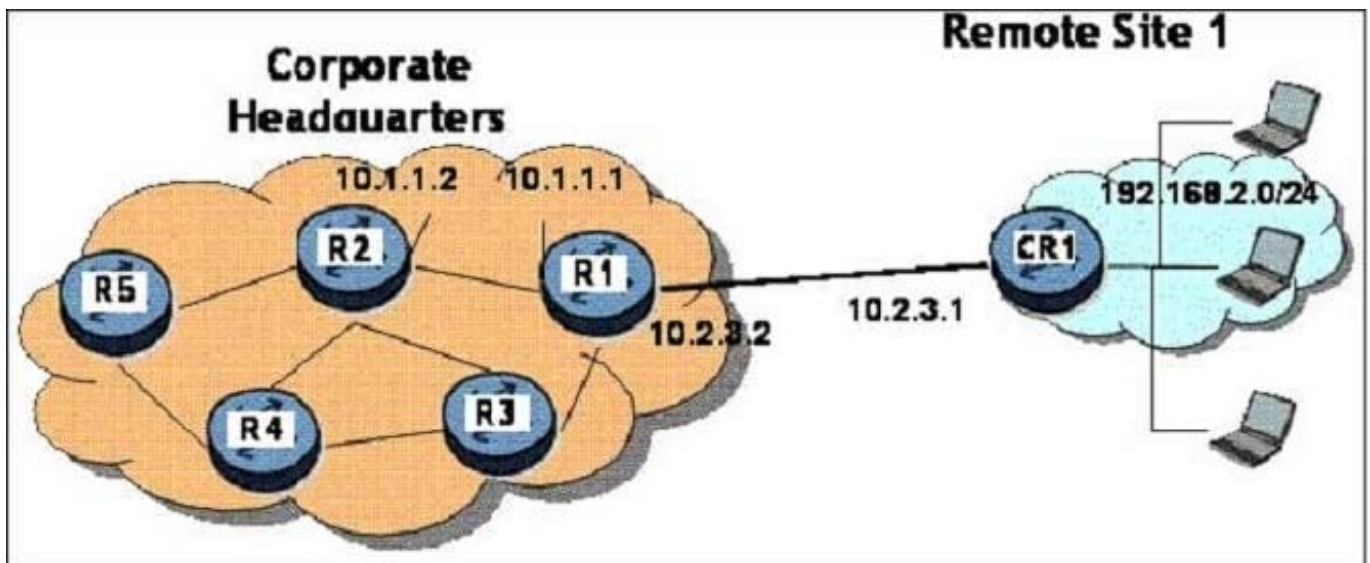
How does LDP select the path used for an LSP?

- A. LDP monitors the available bandwidth on all links and signals the LSP based on this information.
- B. LDP uses the shortest hop-count between two endpoints for the LSP.
- C. LDP must be configured hop-by-hop by the service provider.
- D. LDP follows the path chosen by the IGP.

Correct Answer: D

QUESTION 2

Based on the network diagram (click on the exhibit), what is the command to use on R1 to setup a static route to the network on CR1



- A. config router static-route 192.168.2.0/24 next-hop 10.2.3.2
- B. config router static-route 10.2.3.1 next-hop 192.168.2.0
- C. config router static-route 192.168.2.0/24 next-hop 10.2.3.1
- D. config router static-route 10.2.3.2 next-hop 192.168.2.0

Correct Answer: C

QUESTION 3

The TiMOS-m.n.Y.Z software image file is software that:



- A. Contains all the components required to configure and run protocols on the Nokia 7750 SR/7450 ESS.
- B. Loads the router configuration.
- C. Transfers the router configuration from the router to the network management system.
- D. Loads the router software image.

Correct Answer: A

QUESTION 4

What happens immediately after an Ethernet switch receives an Ethernet frame?

- A. It records the destination MAC address and the interface on which it arrived.
- B. It records the source MAC address and the interface on which it arrived.
- C. It floods the frame out of all its interfaces except the interface on which the frame arrived.
- D. It transmits the frame out of the appropriate interface.

Correct Answer: B

QUESTION 5

Which of the following is a Layer 3 protocol?

- A. Ethernet
- B. TCP
- C. IP
- D. FTP

Correct Answer: C

[4A0-100 Study Guide](#)

[4A0-100 Exam Questions](#)

[4A0-100 Braindumps](#)