



# 352-011<sup>Q&As</sup>

Cisco Certified Design Expert Practical

## Pass Cisco 352-011 Exam with 100% Guarantee

Free Download Real Questions & Answers **PDF** and **VCE** file from:

<https://www.pass4itsure.com/352-011.html>

100% Passing Guarantee  
100% Money Back Assurance

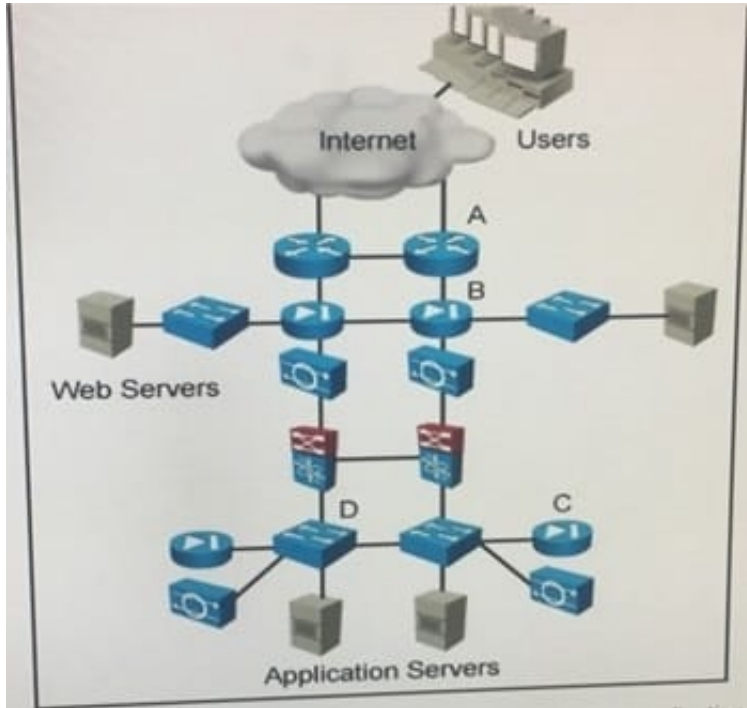
Following Questions and Answers are all new published by Cisco  
Official Exam Center

- ⚙️ **Instant Download** After Purchase
- ⚙️ **100% Money Back** Guarantee
- ⚙️ **365 Days** Free Update
- ⚙️ **800,000+** Satisfied Customers



**QUESTION 1**

Refer to the exhibit.



The operations team has identified that some of the multi-tiered e-commerce application have slow performance, due to illegitimate inbound traffic form the internet. On which device do you place traffic filtering to improve performance?

- A. Option A
- B. Option B
- C. Option C
- D. Option D

Correct Answer: D

**QUESTION 2**

Which reason prevents a designer from using a GDOI-based VPN to secure traffic that traverses the Internet?

- A. Enterprise host IP addresses are typically not routable.
- B. GDOI is less secure than traditional IPsec.
- C. Network address translation functions interfere with tunnel header preservation.
- D. The use of public addresses is not supported with GDOI.

Correct Answer: C

**QUESTION 3**

A service provider must provide Internet connectivity to an MPLS Layer 3 VPN customer. Which solution allows this customer to have Internet access?

- A. Implement a global default route with a next hop in the VRF late on PE
- B. Implement policy-based routing between PE and CE
- C. Implement a default route in the VRF with a next hop in the global routing table of PE
- D. Implement destination NAT between the VRF and the global RIB of PE

Correct Answer: C

---

**QUESTION 4**

Which are two open-source SDN controllers? (Choose two)

- A. Big Cloud Fabric
- B. OpenContrail
- C. Application Policy Infrastructure Controller
- D. Virtual Application Networks SDN controller
- E. OpenDaylight

Correct Answer: BE

---

**QUESTION 5**

Which three network management requirements are common practices in network design? (Choose three)

- A. Ensure that all network devices have their clocks synchronized.
- B. Collect SNMP poll information for future regression analysis.
- C. Capture both ingress and egress flow-based packets, while avoiding duplication of flows.
- D. Look at average counters instead of instantaneous counters for inconsistent and bursty KPIs, such as CPU utilization and interface utilization.
- E. Validate data plane health, and application and services availability, with synthetic traffic.

Correct Answer: ABD

---