



352-011^{Q&As}

Cisco Certified Design Expert Practical

Pass Cisco 352-011 Exam with 100% Guarantee

Free Download Real Questions & Answers **PDF** and **VCE** file from:

<https://www.pass4itsure.com/352-011.html>

100% Passing Guarantee
100% Money Back Assurance

Following Questions and Answers are all new published by Cisco
Official Exam Center

- ⚙ **Instant Download** After Purchase
- ⚙ **100% Money Back** Guarantee
- ⚙ **365 Days** Free Update
- ⚙ **800,000+** Satisfied Customers



**QUESTION 1**

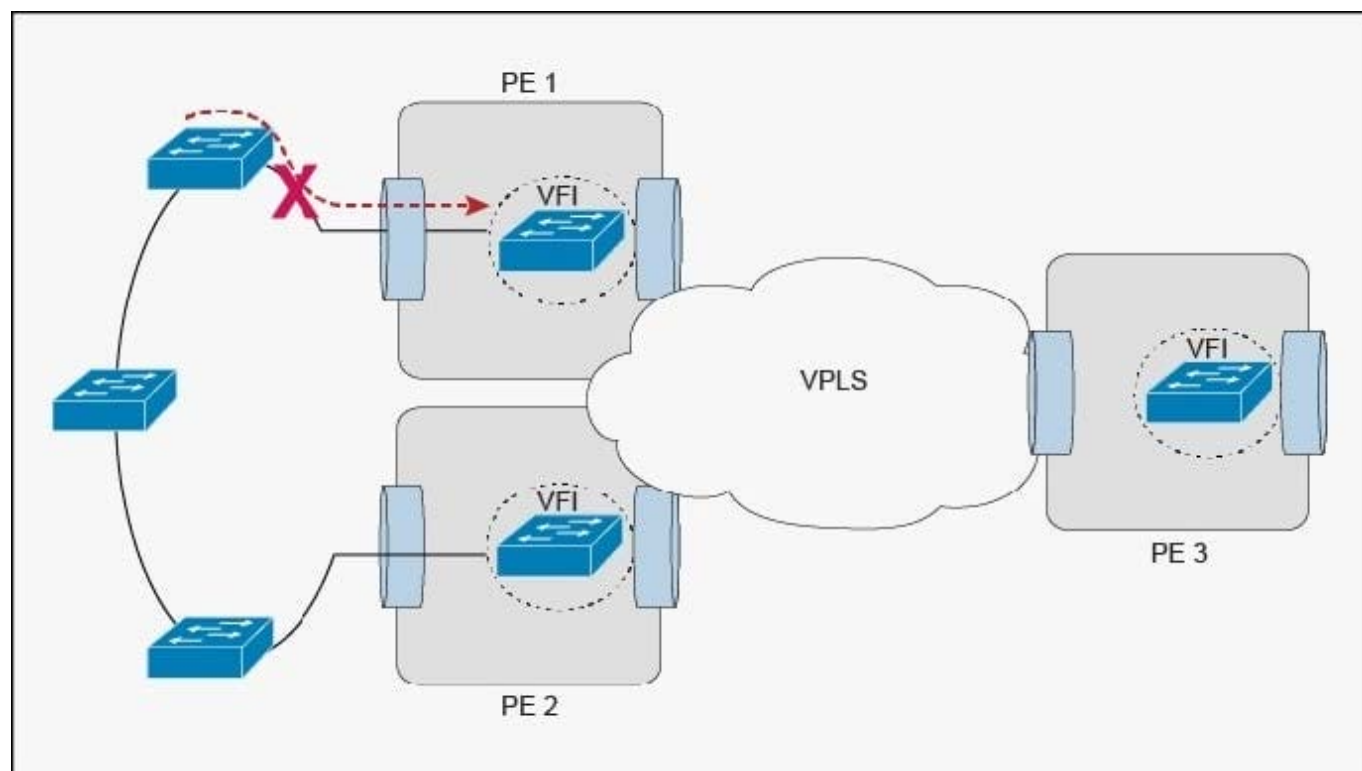
At which two networks points is route summarization supported? (Choose two)

- A. At EIGRP AS boundaries
- B. At EIGRP interface boundaries
- C. At OSPF virtual-link boundaries
- D. At EIGRP area boundaries
- E. At OSPF area boundaries
- F. At EIGRP stub interface boundaries

Correct Answer: BE

QUESTION 2

Refer to the exhibit.



This Layer 2 ring has 10 VLANs with 1000 MAC addresses in each VLAN. Which protocol or mechanism provides the shortest traffic outage if the link marked with "X" fails?

- A. Ethernet linear protection switching
- B. PVRST



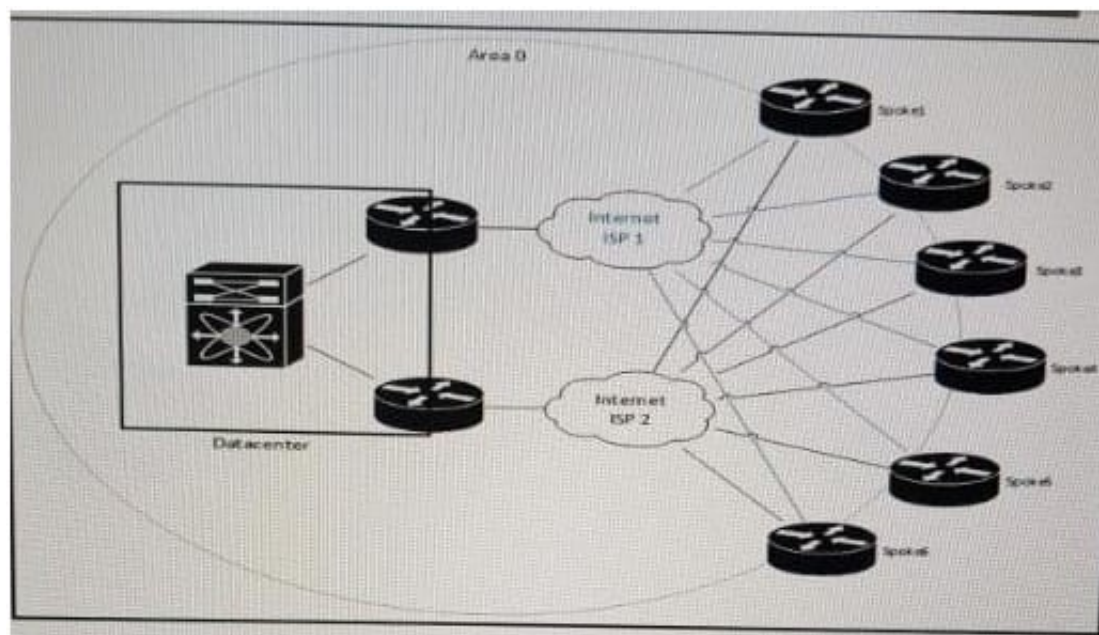
C. MST

D. Ethernet ring protection switching

Correct Answer: D

QUESTION 3

Refer to the exhibit.



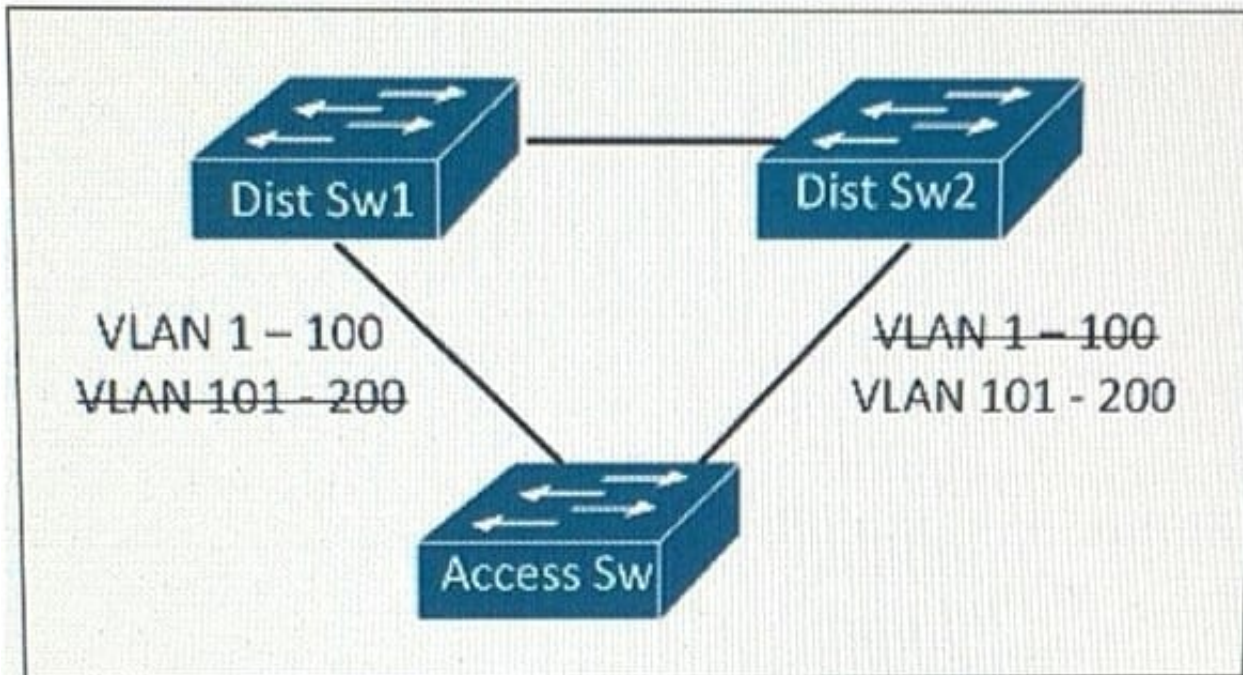
You must review this single OSPF area, DMVPN network because the company has noticed a few area 0 convergence and stability issues. Also, traffic destined to the data center from one of the spokes as the next hop on the path. The company prefers that all traffic destined to the data center uses the least amount of hops. Which solution resolves these issues with the minimum amount of changes on the network?

- A. Migrate from OSPF to static routes between the hub routers and the spoke routers and deploy IP SLA for route health checks
- B. Migrate from OSPF to EIGRP between the hub routers and the spoke routers
- C. Modify OSPF cost metrics on all backup links
- D. Create areas between each hub and their spoke routers, to ensure that the hub routers become DRs

Correct Answer: C

QUESTION 4

Refer to the exhibit.



This layer 2 network is expected to add 150 VLANs over the next year, In addition to the existing 50 VLANs within the network which STP types will support this design requirement the least amount of CPU resource and achieving load balancing?

- A. PVST+
- B. CST
- C. MST
- D. RSTP

Correct Answer: C

QUESTION 5

Which option describes the fundamental design differences between an IP-based network design and a SAN-based?

- A. An IP-based design has redundant connectivity in the fabric and high amounts of east- west traffic, whereas a SAN-based design uses redundancy from a dual-attached host, which uses separate fabrics and has very little east-west traffic
- B. An IP-based design has redundancy from the host and high amounts of east-west traffic, whereas a SAN-based design uses redundancy in the fabric and very little east-west traffic
- C. An IP-based design has redundant connectivity in the fabric and high amounts of east- west traffic, whereas a SAN-based design uses zoning based redundancy which uses separate fabrics and has very little east-west traffic
- D. An IP-based design has redundant connectivity in the fabric and very little east-west traffic, whereas a SAN-based design uses redundancy in the host, which uses separate fabrics and has high amounts of east-west traffic

Correct Answer: A



VCE & PDF

Pass4itSure.com

<https://www.pass4itsure.com/352-011.html>

2024 Latest pass4itsure 352-011 PDF and VCE dumps Download

[352-011 VCE Dumps](#)

[352-011 Study Guide](#)

[352-011 Braindumps](#)