



# 350-601<sup>Q&As</sup>

Implementing and Operating Cisco Data Center Core Technologies  
(DCCOR)

## Pass Cisco 350-601 Exam with 100% Guarantee

Free Download Real Questions & Answers **PDF** and **VCE** file from:

<https://www.pass4itsure.com/350-601.html>

100% Passing Guarantee  
100% Money Back Assurance

Following Questions and Answers are all new published by Cisco  
Official Exam Center

- ⚙️ **Instant Download** After Purchase
- ⚙️ **100% Money Back** Guarantee
- ⚙️ **365 Days** Free Update
- ⚙️ **800,000+** Satisfied Customers





### QUESTION 1

An engineer must export the Cisco UCS Manager configuration for backup purposes. The requirement is to export the configuration that contains the AAA and RBAC configuration. Also, the file must be stored in a human-readable format. Which backup type must be selected to meet these requirements?

- A. logical configuration
- B. system configuration
- C. full state
- D. all configuration

Correct Answer: B

---

### QUESTION 2

Refer to the exhibit.



http://10.10.10.78/api/mo/sys/intf/phys-[eth1/3].json

GET http://10.10.10.78/api/mo/sys/intf/phys-[eth1/3].json Send

Params Authorization Headers (8) Body Pre-request Script Tests Settings Cookies

Query Params

KEY	VALUE	DESCRIPTION
Key	Value	Description

Body Cookies (1) Headers (16) Test Results 200 OK 19 ms 2.26 KB Save Response

Pretty Raw Preview Visualize

```
{
  "totalCount": 1,
  "imdata": [
    {
      "l1PhysIf": {
        "attributes": {
          "FECMode": "auto",
          "accessVlan": "vlan-1",
          "adminSt": "up",
          "autoNeg": "on",
          "beacon": "off",
          "bw": "default",
          "childAction": "",
          "controllerId": "",
          "delay": "1",
          "descr": "",
          "dfeAdaptiveTuning": "enable",
          "dfeTuningDelay": "100",
          "dn": "sys/intf/phys-[eth1/3]",
          "dot1qEtherType": "0x8100",
          "duplex": "auto",
          "ethomCfgFailedBmp": "",
          "ethomCfgFailedTs": "0",
          "ethomCfgState": "0",
          "id": "eth1/3",
          "inhBw": "4294967295",
          "layer": "Layer2",
          "linkDebounce": "100",
          "linkDebounceLinkUp": "0",
          "linkLog": "default",
          "linkMacUpTimer": "0",
          "linkTransmitReset": "enable",
          "mdix": "auto",
          "medium": "broadcast",
          "modTs": "2021-03-03T10:14:20.762+00:00",
          "mode": "access",
          "mtu": "1500",
          "name": "",
          "nativeVlan": "vlan-1",
          "packetTimestampEgressSourceId": "0",
          "packetTimestampIngressSourceId": "0",
          "packetTimestampState": "disable",
          "portT": "leaf",
          "routerMac": "not-applicable",
          "snmpTrapSt": "enable",
          "spanMode": "not-a-span-dest",
          "speed": "auto",
          "speedGroup": "auto",
          "status": "",
          "switchingSt": "disabled",
          "trunkLog": "default",
          "trunkVlans": "1-4094",
          "uniDirectionalEthernet": "disable",
          "usage": "discovery",
          "userCfgdFlags": "",
          "vlanmgrCfgFailedBmp": "",
          "vlanmgrCfgFailedTs": "0",
          "vlanmgrCfgState": "0",
          "voicePortCos": "none",
          "voicePortTrust": "disable",
          "voiceVlanId": "none",
          "voiceVlanType": "none"
        }
      }
    }
  ]
}
```

Authorization Headers (6)

TYPE

Inherit auth from parent

Inherit auth from parent

No Auth

API Key

Bearer Token

Basic Auth

Digest Auth

OAuth 1.0

OAuth 2.0

Hawk Authentication

AWS Signature

NTLM Authentication [Beta]



Which feature must be implemented on postman to receive the response from a cisco nexus 9000 series switch?

- A. API token in the APIC-cookie
- B. username and password in the Nexus-cookie
- C. username and password in the api/mo header
- D. certificate in the HTML Nexus-API header

Correct Answer: A

Subsequent operations on the REST API can use this token value as a cookie named APIC-cookie to authenticate future requests <https://www.cisco.com/c/en/us/td/docs/switches/datacenter/aci/apic/sw/3-x/rest-api-config/>

[b\\_Cisco\\_APIC\\_REST\\_API\\_Configuration\\_Guide\\_3x/b\\_Cisco\\_APIC\\_REST\\_API\\_Configuration\\_Guide\\_chapter\\_01.html](https://www.cisco.com/c/en/us/td/docs/switches/datacenter/aci/apic/sw/3-x/rest-api-config/b_Cisco_APIC_REST_API_Configuration_Guide_3x/b_Cisco_APIC_REST_API_Configuration_Guide_chapter_01.html)

---

### QUESTION 3

A new employee must be granted access to add VLANs into an existing Cisco UCS Manager and configure NTP synchronization with date and time zone settings. Which two privileges must be granted to the employee to complete the task? (Choose two.)

- A. Service Profile Compute (ls-compute)
- B. Ext LAN Config (ext-lan-security)
- C. Service Profile Network Policy (ls-network-policy)
- D. Service Profile Config (ls-config)
- E. Ext LAN Policy (ext-lan-policy)

Correct Answer: BE

[https://www.cisco.com/c/en/us/td/docs/unified\\_computing/ucs/ucs-manager/Reference-Docs/Privileges/4-1/b-UCSM-Privileges-4\\_1.pdf](https://www.cisco.com/c/en/us/td/docs/unified_computing/ucs/ucs-manager/Reference-Docs/Privileges/4-1/b-UCSM-Privileges-4_1.pdf)

NTP can be configured only with EXT LAN Security. VLAN can be added using the following privileges:

-

Ext Lan Config (ext-lan-config)

-

Ext Lan Policy (ext-lan-policy)

service profiles will add VLANs to vNICs only if they are configured to UCS manager. So service profile is not valid solution.

---

### QUESTION 4



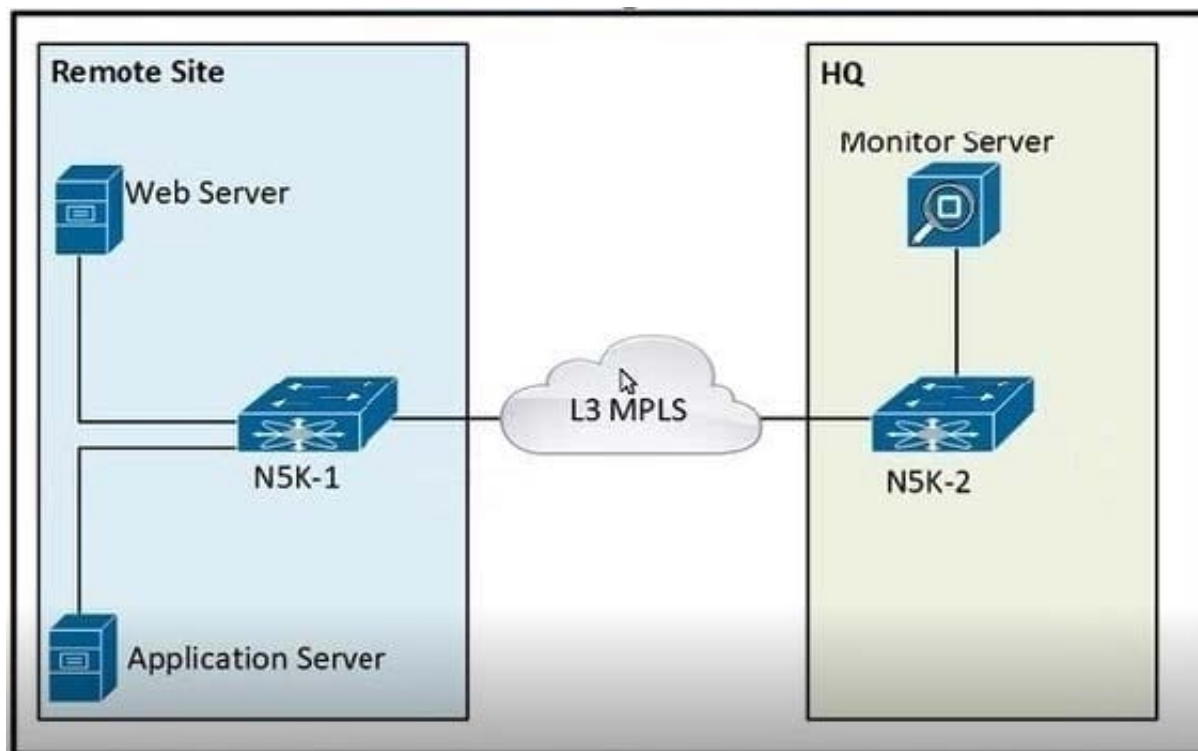
An engineer must affirm the identity of the Cisco UCS Manager after a valid CA-signed keyring for HTTPS access is created. Which action completes the configuration?

- A. Set Cipher Suite Mode
- B. Create a trusted point
- C. Implement SSLv3
- D. Enable TLSv1.2

Correct Answer: B

### QUESTION 5

Refer to the exhibit.



The communication between the web server and the application server experiences poor performance. The network engineer must collect the traffic between the two servers, including the payload for more investigation. The collected data must be sent from the remote site to the headquarters. Which action accomplishes this goal?

- A. Configure an ERSPAN session between N5K-1 and N5K-2.
- B. Configure a SPAN session between N5K-1 and N5K-2
- C. Configure SNMP on N5K-1 to send the data to the monitor server
- D. Configure NetFlow on N5K-1 to send the data to the monitor server

Correct Answer: A



VCE & PDF

Pass4itSure.com

<https://www.pass4itsure.com/350-601.html>

2024 Latest pass4itsure 350-601 PDF and VCE dumps Download

---

[Latest 350-601 Dumps](#)

[350-601 VCE Dumps](#)

[350-601 Exam Questions](#)