



# 350-501<sup>Q&As</sup>

Implementing and Operating Cisco Service Provider Network Core Technologies (SPCOR)

## Pass Cisco 350-501 Exam with 100% Guarantee

Free Download Real Questions & Answers **PDF** and **VCE** file from:

<https://www.pass4itsure.com/350-501.html>

100% Passing Guarantee  
100% Money Back Assurance

Following Questions and Answers are all new published by Cisco  
Official Exam Center

- ⚙️ **Instant Download** After Purchase
- ⚙️ **100% Money Back** Guarantee
- ⚙️ **365 Days** Free Update
- ⚙️ **800,000+** Satisfied Customers





## QUESTION 1

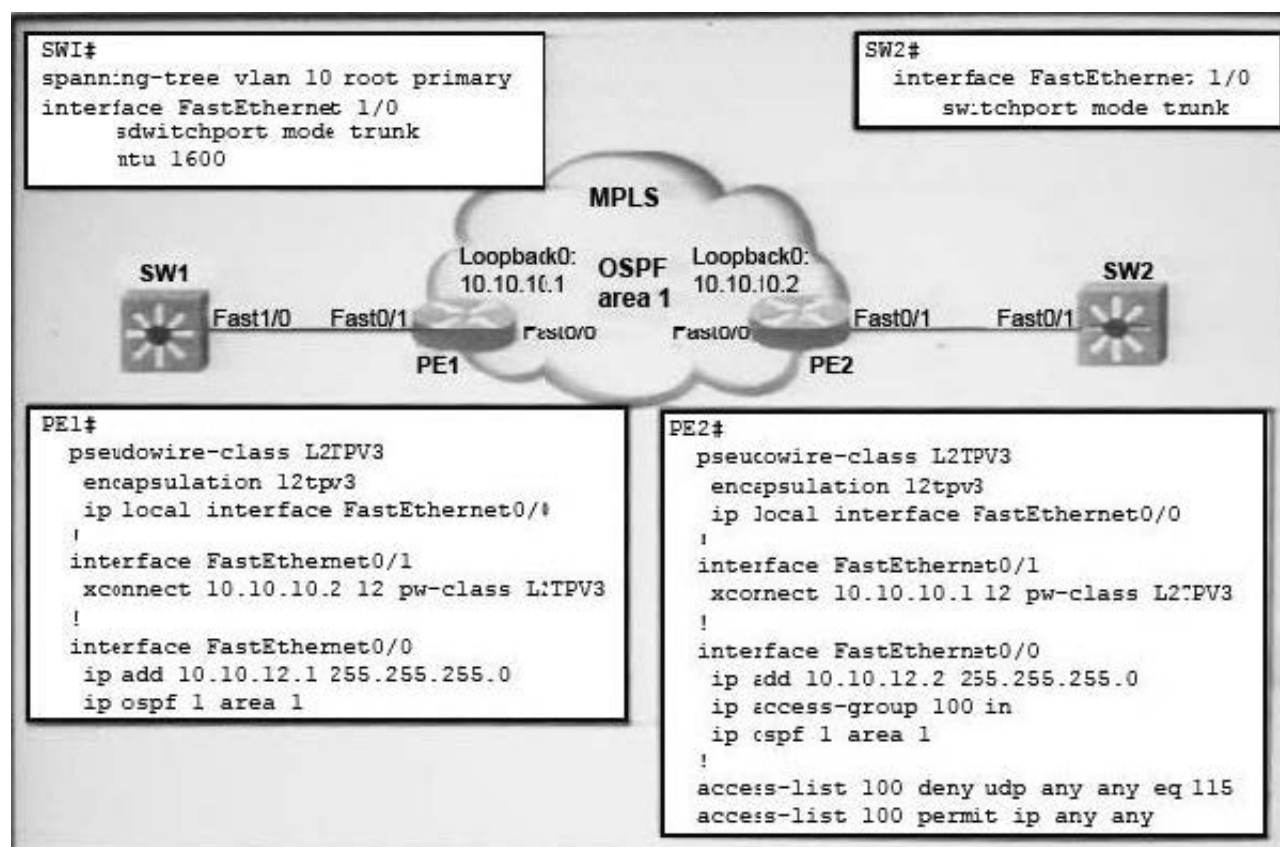
The administrator of a small company network notices that intermittent network issues occasionally cause inbound notifications to its SNMP servers to be lost.

Which configuration must the administrator apply so that the SNMP servers acknowledge the notifications that they receive?

- A. snmp-server community ciscotest rw 10
- B. snmp-server host tests.cisco.com public snmp-server community ciscotest rw 10
- C. snmp-server enable traps bgp snmp-server host 192.169.2.1 Informs
- D. snmp-server enable traps snmp

Correct Answer: C

## QUESTION 2



Refer to the exhibit what is the status of the L2 tunnel between PE1,PE2 and the layer 2 switches ?

- A. The layer 2 tunnel is down due to the ACL is applied on the PE2 interface
- B. The layer 2 tunnel is up and SW1 become the root bridge for VLAN 10



- C. The layer 2 tunnel is down due to the MTU mismatch between SW1 and SW2
- D. The layer 2 tunnel is up but no BPDUs are exchange unless an extra configuration is applied

Correct Answer: B

---

### QUESTION 3

Which two tasks must you perform when you implement LDP NSF on your network? (Choose two.)

- A. Enable NSF for BGP.
- B. Implement direct connections for LDP peers.
- C. Enable NSF for EIGRP.
- D. Disable Cisco Express Forwarding.
- E. Enable NSF for the link-state routing protocol that is in use on the network.

Correct Answer: AE

Again just repeating what people said before.

A you do have to enable NSF for BGP.

cant be B because it works for connected and non-connected peers.

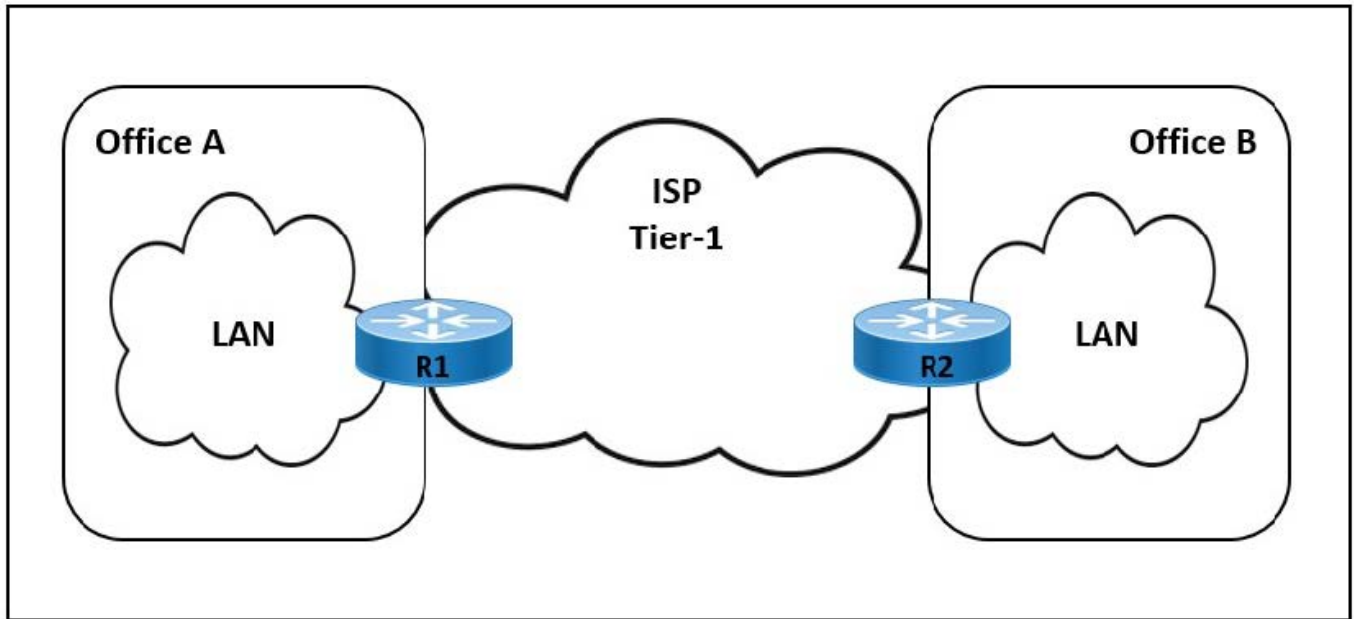
LDP NSF works with LDP sessions between directly connected peers and with peers that are not directly connected (targeted sessions).

[https://www.cisco.com/c/en/us/td/docs/ios-xml/ios/mp\\_ha/configuration/15-sy/mp-ha-15-sy-book/mp-ldp-grace-nsfsso.html](https://www.cisco.com/c/en/us/td/docs/ios-xml/ios/mp_ha/configuration/15-sy/mp-ha-15-sy-book/mp-ldp-grace-nsfsso.html)

---

### QUESTION 4

Refer to the exhibit.



The link between Office A and Office B is running at 90% load, and occasionally the CPU on router R1 is overloaded. The company implemented QoS for business-critical applications at both offices as a temporary solution. A network engineer must update the R1 configuration to 600 ms to reduce CPU load and limit downtime after connection failure to avoid data loss. Which action meets this requirement?

- A. Configure the fast-hello feature for OSPF with the command `ip ospf dead-interval minimal hello-multiplier 3`.
- B. Configure BFD demand mode with the command `bfd-demand timer 150 interval 250 retransmit 5`.
- C. Configure BFD non-echo mode with the command `echo interval 250 minimal 300 echo-multiplier 2`.
- D. Configure BFD echo mode with the command `bfd interval 150 min_rx 200 multiplier 3`.

Correct Answer: D

## QUESTION 5

### DRAG DROP

Drag and drop the characteristics from the left onto the corresponding radio splitting approaches on the right.

Select and Place:



### Answer Area

It requires lower RTT delays.

It is also known as the fronthaul network.

It requires high bandwidth.

It is also known as the midhaul network.

#### Low-level split

#### High-level split

Correct Answer:

### Answer Area

#### Low-level split

It is also known as the fronthaul network.

It requires high bandwidth.

#### High-level split

It requires lower RTT delays.

It is also known as the midhaul network.

[350-501 PDF Dumps](#)

[350-501 VCE Dumps](#)

[350-501 Braindumps](#)