



301B^{Q&As}

BIG-IP Local Traffic Manager (LTM) Specialist: Maintain & Troubleshoot

Pass F5 301B Exam with 100% Guarantee

Free Download Real Questions & Answers **PDF** and **VCE** file from:

<https://www.pass4itsure.com/301b.html>

100% Passing Guarantee
100% Money Back Assurance

Following Questions and Answers are all new published by F5 Official Exam Center

-  **Instant Download** After Purchase
-  **100% Money Back** Guarantee
-  **365 Days** Free Update
-  **800,000+** Satisfied Customers





QUESTION 1

Which command will identify the active LTM device currently handling client traffic?

- A. b ha table show
- B. tmsh list /sys ha-status
- C. tmsh show /cm traffic-group
- D. tmsh run /sys failover standby
- E. tmsh show /sys ha-status all-properties

Correct Answer: C

QUESTION 2

-- Exhibit

PACKET CAPTURE DIRECT TO WEB SERVER

```
19:50:28.497103 IP 172.31.5.100.49715 > 10.31.80.23.80: S 751670031:751670031(0) win 8192 <mss 1460,nop,wscale 2,nop,nop,sackOK>
19:50:28.501117 IP 10.31.80.23.80 > 172.31.5.100.49715: S 1684731463:1684731463(0) ack 751670032 win 8192 <mss 1460,nop,wscale 8,nop,nop,sackOK>
19:50:28.502839 IP 172.31.5.100.49715 > 10.31.80.23.80: . ack 1 win 16425
19:50:28.524386 IP 172.31.5.100.49715 > 10.31.80.23.80: P 1:249(248) ack 1 win 16425
19:50:28.527024 IP 10.31.80.23.80 > 172.31.5.100.49715: P 1:344(343) ack 249 win 256
19:50:28.738115 IP 172.31.5.100.49715 > 10.31.80.23.80: . ack 344 win 16339
19:50:30.855229 IP 172.31.5.100.49716 > 10.31.80.23.80: S 3248492897:3248492897(0) win 8192 <mss 1460,nop,wscale 2,nop,nop,sackOK>
19:50:30.858672 IP 10.31.80.23.80 > 172.31.5.100.49716: S 1034885901:1034885901(0) ack 3248492898 win 8192 <mss 1460,nop,wscale 8,nop,nop,sackOK>
19:50:30.861972 IP 172.31.5.100.49716 > 10.31.80.23.80: . ack 1 win 16425
19:50:30.861980 IP 172.31.5.100.49716 > 10.31.80.23.80: P 1:202(201) ack 1 win 16425
19:50:30.865070 IP 10.31.80.23.80 > 172.31.5.100.49716: P 1:1406(1405) ack 202 win 256
19:50:30.867112 IP 172.31.5.100.49716 > 10.31.80.23.80: R 202:202(0) ack 1406 win 0
```

PACKET CAPTURE THROUGH LTM DEVICE

EXTERNAL VLAN

```
20:05:33.719423 IP 172.31.5.100.49734 > 172.31.200.200.80: S 3265616310:3265616310(0) win 8192 <mss 1460,nop,wscale 2,nop,nop,sackOK>
20:05:33.958133 IP 172.31.5.100.49735 > 172.31.200.200.80: S 2304966925:2304966925(0) win 8192 <mss 1460,nop,wscale 2,nop,nop,sackOK>
20:05:36.722498 IP 172.31.5.100.49734 > 172.31.200.200.80: S 3265616310:3265616310(0) win 8192 <mss 1460,nop,wscale 2,nop,nop,sackOK>
20:05:36.972779 IP 172.31.5.100.49735 > 172.31.200.200.80: S 2304966925:2304966925(0) win 8192 <mss 1460,nop,wscale 2,nop,nop,sackOK>
20:05:42.723128 IP 172.31.5.100.49734 > 172.31.200.200.80: S 3265616310:3265616310(0) win 8192 <mss 1460,nop,nop,sackOK>
20:05:42.972755 IP 172.31.5.100.49735 > 172.31.200.200.80: S 2304966925:2304966925(0) win 8192 <mss 1460,nop,nop,sackOK>
```

INTERNAL VLAN

```
20:05:33.719791 IP 172.31.5.100.49734 > 172.31.200.200.80: S 3265616310:3265616310(0) win 8192 <mss 1460,nop,wscale 2,nop,nop,sackOK>
20:05:33.958189 IP 172.31.5.100.49735 > 172.31.200.200.80: S 2304966925:2304966925(0) win 8192 <mss 1460,nop,wscale 2,nop,nop,sackOK>
20:05:36.722525 IP 172.31.5.100.49734 > 172.31.200.200.80: S 3265616310:3265616310(0) win 8192 <mss 1460,nop,wscale 2,nop,nop,sackOK>
20:05:36.972805 IP 172.31.5.100.49735 > 172.31.200.200.80: S 2304966925:2304966925(0) win 8192 <mss 1460,nop,wscale 2,nop,nop,sackOK>
20:05:42.723147 IP 172.31.5.100.49734 > 172.31.200.200.80: S 3265616310:3265616310(0) win 8192 <mss 1460,nop,nop,sackOK>
20:05:42.972776 IP 172.31.5.100.49735 > 172.31.200.200.80: S 2304966925:2304966925(0) win 8192 <mss 1460,nop,nop,sackOK>
```

-- Exhibit -Refer to the exhibits.

Users are able to access the application when connecting directly to the web server but are unsuccessful when connecting to the virtual server.

What is the cause of the application access problem?

- A. The virtual server has SNAT disabled.
- B. The client has no route to the web server.

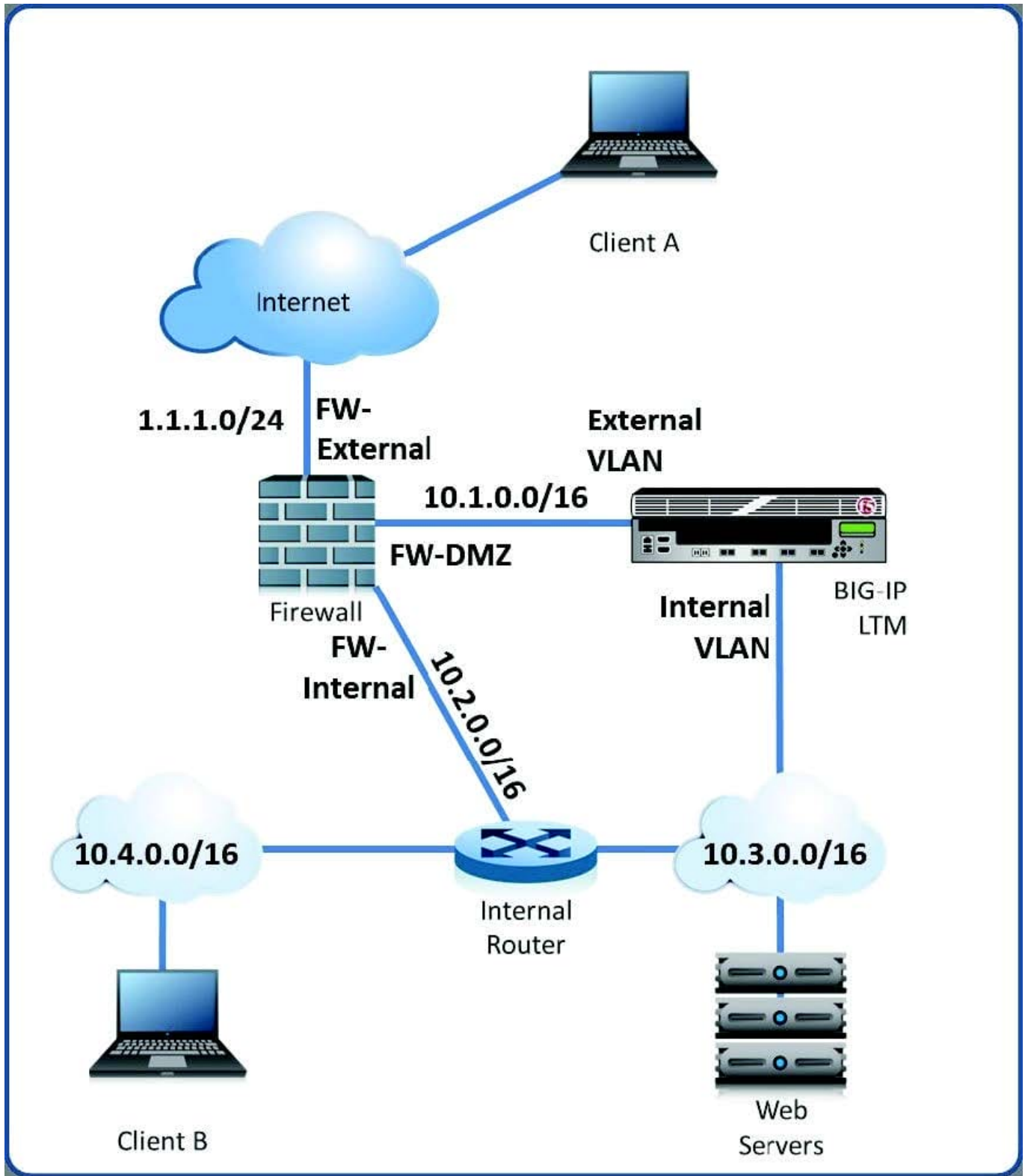


- C. The virtual server has address translation disabled.
- D. The web server is NOT responding on the correct port.
- E. The virtual server is NOT configured to listen on port 80.

Correct Answer: C

QUESTION 3

-- Exhibit



-- Exhibit -Refer to the exhibit.

A layer 2 nPath routing configuration has been deployed. A packet capture contains a client connection packet with the following properties:

Source IP:



Destination IP:

At which two locations could the packet capture have been taken? (Choose two.)

- A. the network interface of web server
- B. the DMZ interface of the Internet firewall
- C. the internal interface of the Internet firewall
- D. the external VLAN interface of the LTM device

Correct Answer: AC

QUESTION 4

An active/standby pair of LTM devices deployed with network failover are working as desired. After external personnel perform maintenance on the network, the LTM devices are active/active rather than active/standby. No changes were made on the LTM devices during the network maintenance.

Which two actions would help determine the cause of the malfunction? (Choose two.)

- A. checking that the configurations are synchronized
- B. checking the configuration of the VLAN used for failover
- C. checking the configuration of the VLAN used for mirroring
- D. checking the open ports in firewalls between the LTM devices
- E. checking synchronization of system clocks among the network devices

Correct Answer: BD

QUESTION 5

A BIG-IP Operator has made a grave error and deleted a few virtual servers on the active LTM device fronting the web browsing proxies. The BIG-IP Operator has NOT yet performed a configuration sync. Which command should the LTM Specialist execute on the active LTM device to force a failover to the standby node and restore web browsing?

- A. tmsh /sys failover standby
- B. tmsh run /sys failover standby
- C. tmsh /sys failover status standby
- D. tmsh run /sys failover status standby

Correct Answer: B



[301B Practice Test](#)

[301B Study Guide](#)

[301B Exam Questions](#)