



# 300-630<sup>Q&As</sup>

Implementing Cisco Application Centric Infrastructure - Advanced  
(DCACIA)

## Pass Cisco 300-630 Exam with 100% Guarantee

Free Download Real Questions & Answers **PDF** and **VCE** file from:

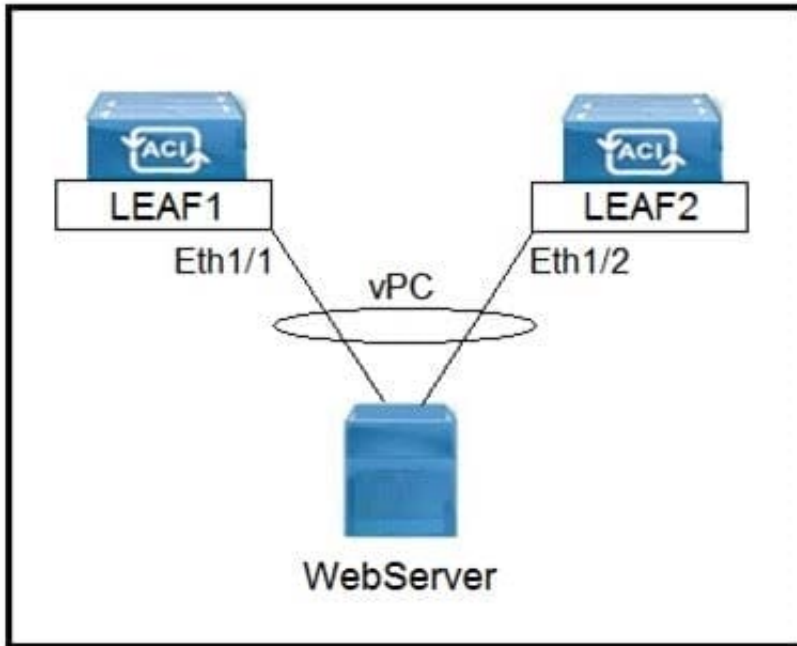
<https://www.pass4itsure.com/300-630.html>

100% Passing Guarantee  
100% Money Back Assurance

Following Questions and Answers are all new published by Cisco  
Official Exam Center

-  **Instant Download** After Purchase
-  **100% Money Back** Guarantee
-  **365 Days** Free Update
-  **800,000+** Satisfied Customers



**QUESTION 1**

Refer to the exhibit. Which three actions should be taken to implement the vPC in the Cisco ACI fabric? (Choose three.)

- A. Select a common vPC interface policy group
- B. Select individual interface profiles
- C. Select common interface profiles
- D. Select individual switch profiles
- E. Select common switch profiles

Correct Answer: ABE

**QUESTION 2**

An engineer implements the Cisco ACI solution and needs to confirm that the leaf switch correctly learns the remote endpoint MAC. Which information must be included in the VXLAN packet that is received from the Cisco ACI spine for the Cisco ACI leaf to learn MAC as a remote endpoint?

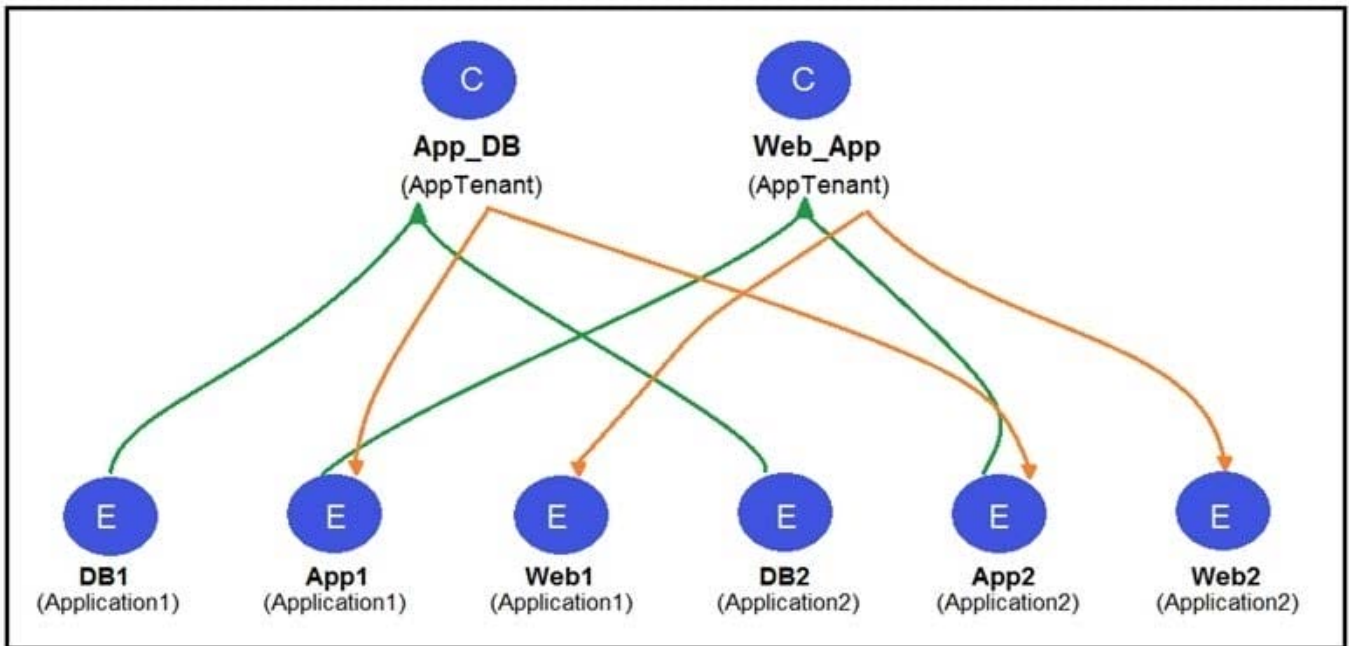
- A. VRF
- B. application profile
- C. bridge domain
- D. EPG



Correct Answer: C

Reference: <https://www.cisco.com/c/en/us/solutions/collateral/data-center-virtualization/application-centric-infrastructure/white-paper-c11-739989.html>

### QUESTION 3



Refer to the exhibit. Two application profiles are configured in the same tenant and different VRFs. Which contract scope is configured to allow communication between the two application profiles?

- A. global
- B. VRF
- C. application
- D. tenant

Correct Answer: D

Reference: [https://www.cisco.com/c/en/us/td/docs/switches/datacenter/aci/apic/sw/1-x/Operating\\_ACI/guide/b\\_Cisco\\_Operating\\_ACI/b\\_Cisco\\_Operating\\_ACI\\_chapter\\_01000.html](https://www.cisco.com/c/en/us/td/docs/switches/datacenter/aci/apic/sw/1-x/Operating_ACI/guide/b_Cisco_Operating_ACI/b_Cisco_Operating_ACI_chapter_01000.html)

### QUESTION 4

Which action reduces the impact on workload when migrating from the existing Cisco NX-OS VXLAN network infrastructure to the Cisco ACI fabric?

- A. Disable bridge domain unicast routing while a default gateway is in VXLAN infrastructure
- B. Set the default gateway in the Cisco ACI and VXLAN fabrics



- C. Use ACI spines for the Cisco ACI and VXLAN fabrics
- D. Configure vPC between the standalone Nexus and the Cisco ACI leaf

Correct Answer: B

Reference: [https://www.cisco.com/c/en/us/td/docs/switches/datacenter/aci/apic/sw/migration\\_guides/migrating\\_existing\\_networks\\_to\\_aci.html#\\_Toc27467765](https://www.cisco.com/c/en/us/td/docs/switches/datacenter/aci/apic/sw/migration_guides/migrating_existing_networks_to_aci.html#_Toc27467765)

---

#### QUESTION 5

A network engineer configured an active-active firewall cluster that is stretched across separate pods in the Cisco ACI fabric. Which two implementation setups for anycast services are available? (Choose two.)

- A. Modify the Cisco ACI contract scope
- B. Modify the MAC address on the second firewall
- C. Configure the firewalls behind an EPG subnet
- D. Deselect No Default SVI Gateway under EPG Subnet
- E. Deploy a Layer 4 to Layer 7 service graph with PBR

Correct Answer: BC

[Latest 300-630 Dumps](#)

[300-630 Exam Questions](#)

[300-630 Braindumps](#)