



300-615^{Q&As}

Troubleshooting Cisco Data Center Infrastructure (DCIT)

Pass Cisco 300-615 Exam with 100% Guarantee

Free Download Real Questions & Answers **PDF** and **VCE** file from:

<https://www.pass4itsure.com/300-615.html>

100% Passing Guarantee
100% Money Back Assurance

Following Questions and Answers are all new published by Cisco
Official Exam Center

- ⚙ **Instant Download** After Purchase
- ⚙ **100% Money Back** Guarantee
- ⚙ **365 Days** Free Update
- ⚙ **800,000+** Satisfied Customers



**QUESTION 1**

Refer to the exhibit.

```
vlan 100
fcoe vsan 200

interface ethernet 1/1
  switchport
  switchport access vlan 100
  spanning-tree port type edge
  mtu 9216
  no shutdown
```

An attempt to bind the Ethernet interface to vFC fails. Which action resolves the issue?

- A. Add the FCoE VLAN to the allowed VLAN list.
- B. Configure the FCoE VLAN that corresponds to the vFC VSAN as a private VLAN.
- C. Configure the interface as a trunk port.
- D. Configure the interface to use the native VLAN of the trunk port.

Correct Answer: C

QUESTION 2

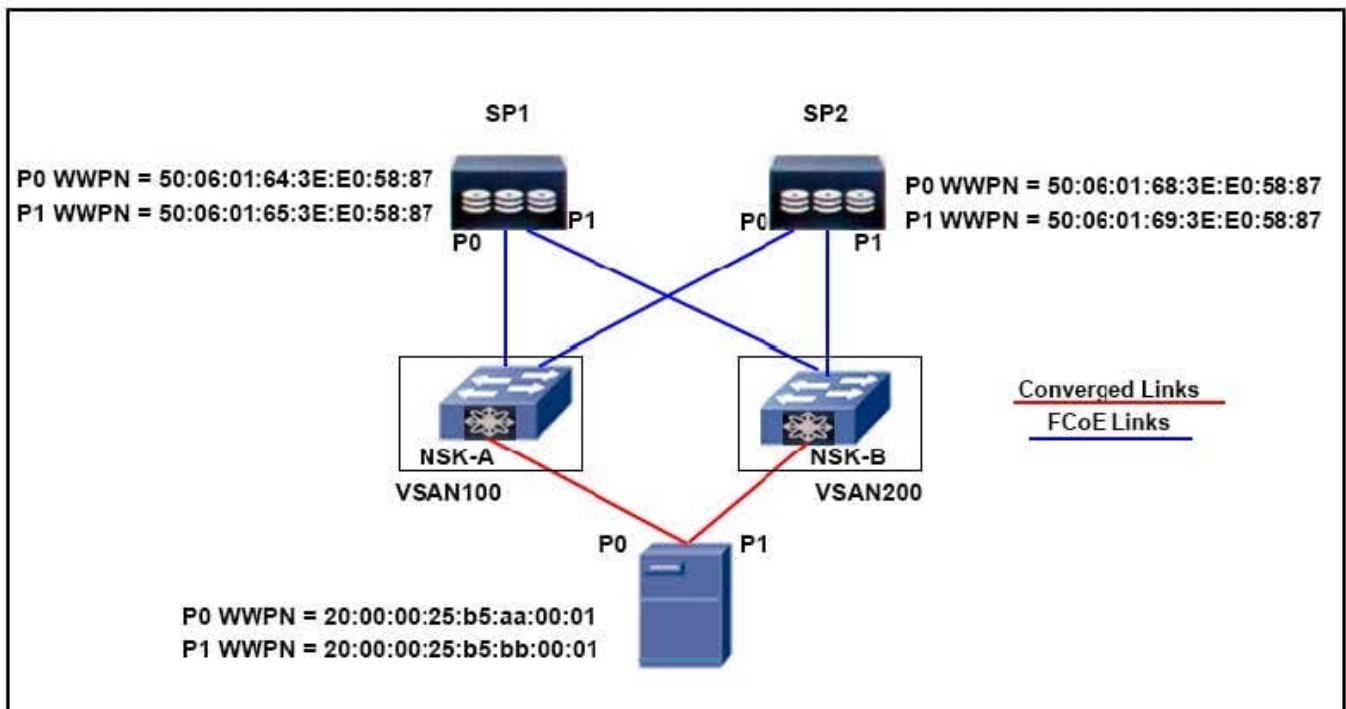
A request to activate the port security database is rejected. Which action do you perform to investigate the cause of the issue?

- A. Enable the auto-learning feature.
- B. Use the force option to identify rejected devices.
- C. Find conflicting entries between the active and configuration databases.
- D. Verify that devices are fully attached to the active database.

Correct Answer: B

QUESTION 3

DRAG DROP Refer to the exhibit.



```
!!!!!! VSAN100-ZONING
zone name host1_hba0- SP1 vsan 100
member pwn 20:00:00:25:b5:aa:00:01

zone name host1_hba0- SP2 vsan 100
member pwn 50:06:01:68:3E:E0:58:87

!!!!!! VSAN200-ZONING
zone name host1_hba1- SP1 vsan 200
member pwn 50:06:01:65:3E:E0:58:87

zone name host1_hba1- SP2 vsan 200
member pwn 20:00:00:25:b5:bb:00:01
```

Boot Order				
+ - Advanced Filter Export Print				
Name	vNIC/v...	Type	WWN	LUN N...
SAN Primary	hba0	Primary		
San Target Primary		Primary	50:06:01:64:3E:E0:58:87	0
SAN Target Secondary		Secondary	50:06:01:64:3E:E0:58:87	0
SAN Secondary	hba1	Secondary		
San Target Primary		Primary	50:06:01:68:3E:E0:58:87	0
SAN Target Secondary		Secondary	50:06:01:69:3E:E0:58:87	0
Move Up Move Down Delete				

Boot from SAN fails. The host fails to detect the LUNs. You must resolve the issue. Drag and drop the WWPNs on the left to the correct zones on the right.

Select and Place:



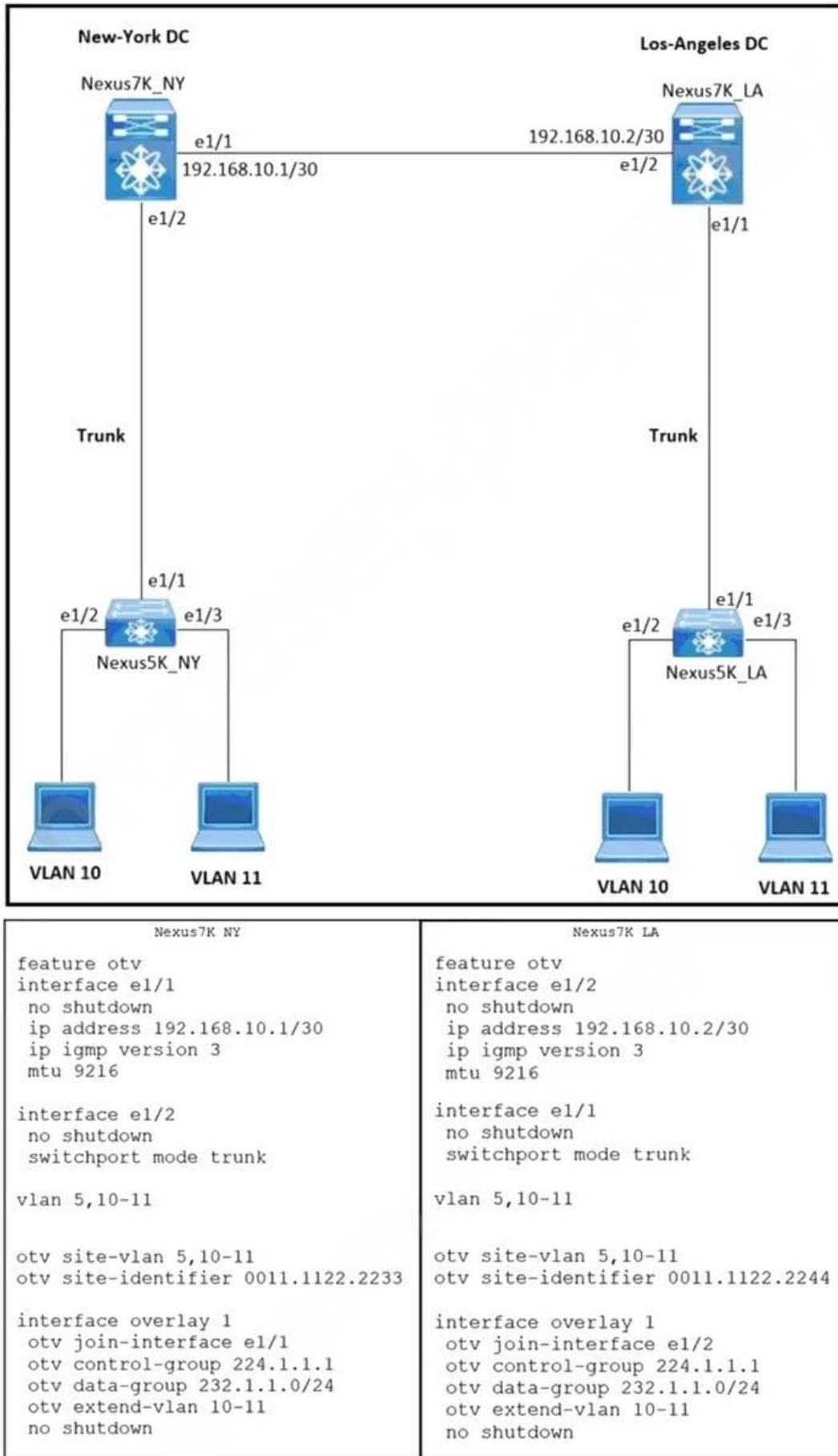
50:06:01:69:3E:E0:58:87	host1_hb0_SP1 vsan 100
20:00:00:25:b5:aa:00:01	host1_hba1_SP1 vsan 200
50:06:01:64:3E:E0:58:87	host1_hba0_SP2 vsan 100
20:00:00:25:b5:bb:00:01	host1_hba1_SP2 vsan 200

Correct Answer:

	50:06:01:64:3E:E0:58:87
	20:00:00:25:b5:aa:00:01
	20:00:00:25:b5:bb:00:01
	50:06:01:69:3E:E0:58:87

QUESTION 4

Refer to the exhibit.





The OTV adjacency fails to come up. Which set of commands on each switch resolves the issue?

- A. otv extend-vlan 5 otv site-vlan 5
- B. otv extend-vlan 5 no otv site-vlan 5-10,11
- C. otv extend-vlan 5 no otv extend-vlan 11
- D. no otv site-vlan 5,10-11 otv site-vlan 5

Correct Answer: D

QUESTION 5

Refer to the exhibit.

Key Ring - default

Policy Faults History

Name: default

Admin State: Completed

Description:

Certificate: -----BEGIN CERTIFICATE-----
MIICwDCCAagCCQCQBWGNXbnWtZANBgkqhkiG9w0BAQ0FADAiMQ0wCwYDVQQDDARB
UElDMREwDwYJKoZIhvcNAQkBFgJVUzAcFw0yMDAyMjEwMTU5MzNaFw0yNTAyMTkw
MTU5MzNaMCIXDTALBgNVBAMMBEFQSUMxETAPBgkqhkiG9w0BCQEWAlVTMIIBIjAN
BgkqhkiG9w0BAQEFAAOCAQ8AMIIBCgKCAQEAnBJnwgQh79ri4KVwZM6FCCHw2F2g
GfNsPxdeQjj2R17xg5qQ3OeXvCIigXWfe+eI7JK5rnBeXUFbR8zD3XMn9Ka5pqR6
+CVppe4DfFcSKONx7ZfkW08KvqmaNC6aOMdARTiKuGMPbDBxXjrosiuu5EZxoLsZN
J9x4sPg/Eh+SoCnUkCOcMyjEbfvES+/rDnHpnYGSRZTeM5dLJzpnk8eHOXUVV5fg
ulXK1/sX3Fgq/mkYort0D99NCQrOp4QCY9NwTDt2R3LL+XUJPojuKrkDe19szoGv

Modulus: MOD 512 MOD 1024 MOD 1536 MOD 2048

Certificate Authority: select an option

Private Key:

A certificate is implemented on the security configuration on the Cisco ACI controller. A customer receives a "Connection Not Secure" error in a browser every time the customer logs in to the Cisco APIC GUI. Which action resolves the issue?

- A. Add a 1536-bit key to the APIC GUI.
- B. Include a private key with the certificate.



- C. Use a browser that supports keys of 2048 bits.
- D. Configure a corporate certificate authority for the certificate.

Correct Answer: D

[300-615 PDF Dumps](#)

[300-615 VCE Dumps](#)

[300-615 Practice Test](#)