



300-615^{Q&As}

Troubleshooting Cisco Data Center Infrastructure (DCIT)

Pass Cisco 300-615 Exam with 100% Guarantee

Free Download Real Questions & Answers **PDF** and **VCE** file from:

<https://www.pass4itsure.com/300-615.html>

100% Passing Guarantee
100% Money Back Assurance

Following Questions and Answers are all new published by Cisco
Official Exam Center

-  **Instant Download** After Purchase
-  **100% Money Back** Guarantee
-  **365 Days** Free Update
-  **800,000+** Satisfied Customers



**QUESTION 1**

An FSM failed during an upgrade with the auto-install feature enabled. The engineer must remove the service pack from the subordinate fabric interconnect (FI) to recover the FIs. Which set of commands resolves the issue?

- A. UCS-A# scope fabric-interconnect b UCS-A# /fabric-interconnect # remove service-pack security UCS-A# /fabric-interconnect* # commit-buffer
- B. UCS-A# scope org UCS-A /org # scope fw-infra-pack default UCS-A /org/fw-infra-pack # set infra-bundle-version "" UCS-A /org/fw-infra-pack* # commit-buffer
- C. UCS-A# scope org UCS-A /org # scope fw-infra-pack default UCS-A /org/fw-infra-pack # set infra-bundle-version "" UCS-A# /fabric-interconnect # remove service-pack security UCS-A# /fabric-interconnect* # commit-buffer
- D. UCS-A# scope fabric-interconnect b UCS-A# /fabric-interconnect # remove service-pack UCS-A# /fabric-interconnect* # commit-buffer

Correct Answer: A

QUESTION 2

Refer to the exhibit.



```
switch1# show vpc brief
Legend:
(*) - local vPC is down, forwarding via vPC peer-link

vPC domain id : 500
Peer status : peer link is down
vPC keep-alive status : Suspended (Destination IP not reachable)
Configuration consistency status : success
vPC role : secondary, operational primary
Number of vPCs configured : 4
Peer Gateway : Disabled
Dual-active excluded VLANs : -

vPC Peer-link status
-----
id  Port  Status  Active  vlans
-----
1  Po500  down -

switch2# show vpc brief
Legend:
(*) - local vPC is down, forwarding via vPC peer-link

vPC domain id : 20
Peer status : peer link is down
vPC keep-alive status : Suspended (Destination IP not reachable)
Configuration consistency status : success
vPC role : secondary, operational primary
Number of vPCs configured : 4
Peer Gateway : Disabled
Dual-active excluded VLANs : -

vPC Peer-link status
-----
id  Port  Status  Active  vlans
-----
1  Po500  down -
```

vPC between switch1 and switch2 is not working. Which two actions are needed to fix the problem? (Choose two.)

- A. Match vPC domain ID between the two devices.
- B. Configure IP address on the interface.
- C. Activate VLANs on the vPC.
- D. Configure vPC peer link and vPC peer keepalive correctly.



E. Configure one of the switches as primary for the vPC.

Correct Answer: AD

QUESTION 3

Refer to the exhibit.

```
FI-A(nxos)# show int vfc 952
vfc952 is down (Error Disabled - VLAN L2 down on Eth interface)
Bound interface is Vethernet9155
Port description is server 1/5, VHBA fc0
Hardware is Ethernet
Port WWN is 23:c2:00:de:fb:2b:e6:ff
Admin port mode is F, trunk mode is on
snmp link state traps are enabled
Port vsan is 100
1 minute input rate 0 bits/sec, 0 bytes/sec, 0 frames/sec
1 minute output rate 0 bits/sec, 0 bytes/sec, 0 frames/sec
0 frames input, 0 bytes
0 discards, 0 errors
0 frames output, 0 bytes
0 discards, 0 errors
```

A network engineer is implementing a Cisco UCS environment. The environment consists of eight servers configured with the same service profile template and Windows 2012 installed. The VFC interfaces of five of these servers are showing the error shown in the exhibit. Which action resolves the issue?

- A. Modify the vHBAs name in the storage connectivity policy
- B. Configure upstream zoning
- C. Decommission and recommission the servers
- D. Modify the boot order in the boot policy

Correct Answer: A

QUESTION 4

A system administrator adds two vNICs to an existing service profile that is used to run a vSphere environment to support disjoint Layer 2 network connectivity. However, after the server is rebooted, the host is not accessible on the network. Which action resolves the issue?

- A. Build a new service profile with the desired network configuration.



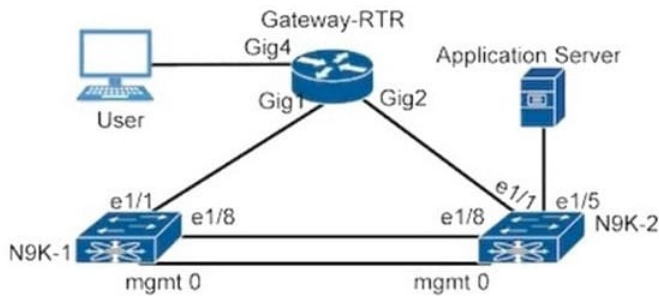
- B. Remove all existing vNICs and add them in the desired order.
- C. Create a vNIC placement policy to avoid adapter renumbering.
- D. Add the disjoint Layer 2 VLANs to an existing vNIC rather than adding new vNICs.

Correct Answer: C

Reference: <https://www.cisco.com/c/en/us/support/docs/hyperconverged-infrastructure/hyperflex-hx-data-platform/213665-troubleshoot-hx-nodes-pci-address-reorde.html>

QUESTION 5

Refer to the exhibit.



```
hostname Gateway-RTR
interface Port-channel1
 ip address 10.1.1.1 255.255.255.0
interface GigabitEthernet1
 no ip address
 channel-group 1 mode active
interface GigabitEthernet2
 no ip address
 channel-group 1 mode active
interface GigabitEthernet4
 ip address 192.168.1.254 255.255.255.0
!
ip route 172.16.1.0 255.255.255.0 10.1.1.2
```

```
hostname N9K-1
vpc domain 100
peer-switch
role priority 80
peer-keepalive destination
1.1.1.2 source 1.1.1.1
interface Vlan10
 ip address 10.1.1.3/24
hsrp 1
 preempt
 priority 110
 ip 10.1.1.2
interface Vlan20
 ip address 172.16.1.252/24
hsrp 1
 preempt
 priority 110
 ip 172.16.1.254
interface port-channel1
 switchport access vlan 10
 spanning-tree port type edge
vpc 1
interface port-channel2
 switchport access vlan 20
 spanning-tree port type edge
vpc 2
interface Ethernet1/1
 switchport access vlan 10
 spanning-tree port type edge
 channel-group 1 mode active
interface Ethernet1/5
 switchport access vlan 20
 spanning-tree port type edge
 channel-group 2
```

```
hostname N9K-2
vpc domain 100
peer-switch
role priority 90
peer-keepalive destination
1.1.1.1 source 1.1.1.2
interface Vlan10
 ip address 10.1.1.4/24
hsrp 1
 preempt
 priority 90
 ip 10.1.1.2
interface Vlan20
 ip address 172.16.1.253/24
hsrp 1
 priority 90
 ip 172.16.1.254
interface port-channel1
 switchport access vlan 10
 spanning-tree port type edge
vpc 1
interface port-channel2
 switchport access vlan 20
 spanning-tree port type edge
vpc 2
interface Ethernet1/1
 switchport access vlan 10
 spanning-tree port type edge
 channel-group 1 mode active
interface Ethernet1/5
 switchport access vlan 20
 spanning-tree port type edge
 channel-group 2
```



A network engineer is troubleshooting an issue where a user reports that they failed to reach the business application server while N9K-1 is down. Which action resolves the issue?

- A. Change the priority value of the N9K-2 switch to 120.
- B. Remove the peer-switch feature from the N9K-2 switch.
- C. Remove the VPC configuration from the application server interface configuration.
- D. Configure the peer-gateway feature on both Cisco Nexus switches.

Correct Answer: C

[300-615 VCE Dumps](#)

[300-615 Practice Test](#)

[300-615 Braindumps](#)