



300-515^{Q&As}

Implementing Cisco Service Provider VPN Services (SVPI)

Pass Cisco 300-515 Exam with 100% Guarantee

Free Download Real Questions & Answers **PDF** and **VCE** file from:

<https://www.pass4itsure.com/300-515.html>

100% Passing Guarantee
100% Money Back Assurance

Following Questions and Answers are all new published by Cisco
Official Exam Center

-  **Instant Download** After Purchase
-  **100% Money Back** Guarantee
-  **365 Days** Free Update
-  **800,000+** Satisfied Customers





QUESTION 1

```
CE Router

router bgp 65001
  address-family ipv4 unicast
    redistribute ospf 1
    allocate-label all
  neighbor 192.168.1.25
    remote-as 65012

PE Router

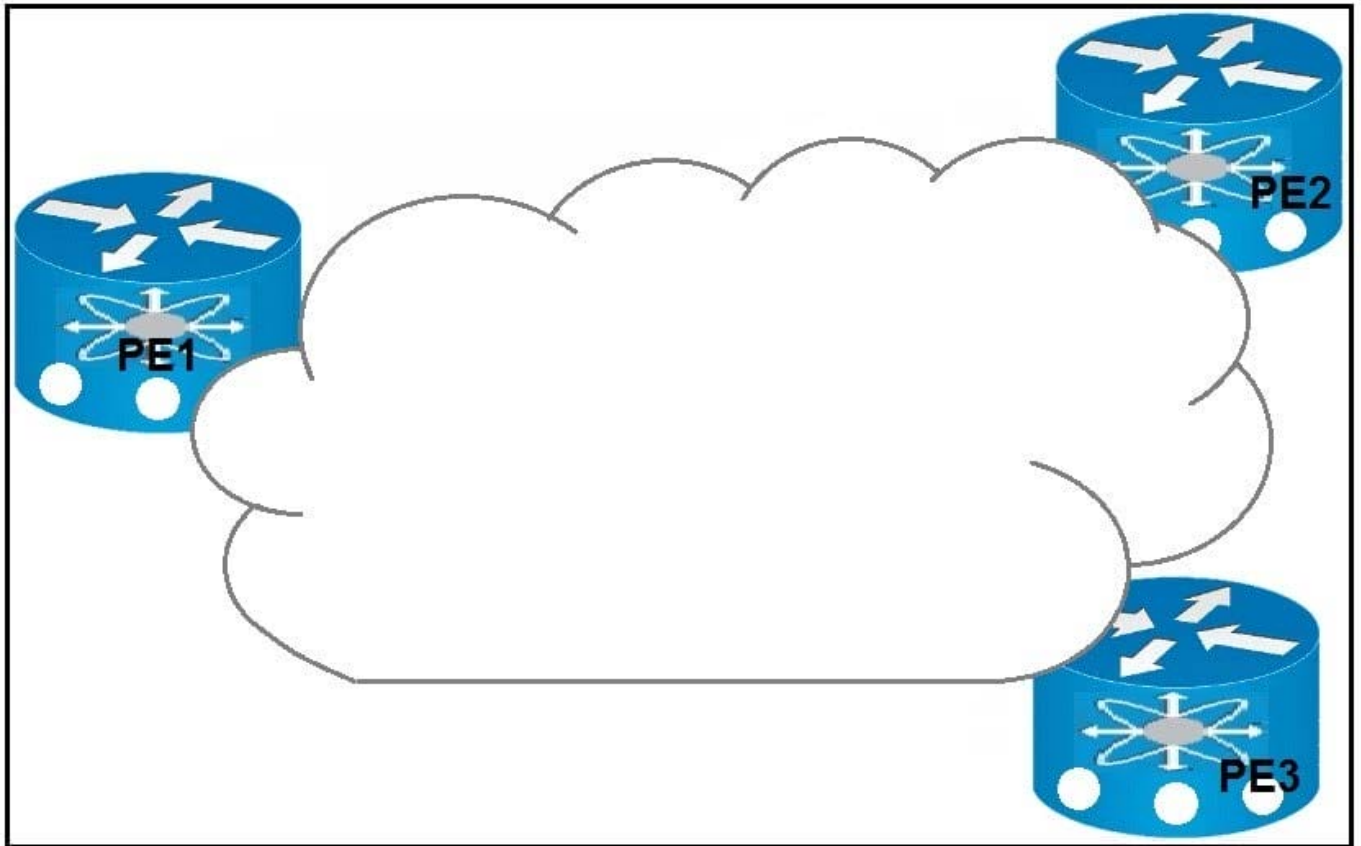
router bgp 65012
  vrf custrouter
    rd 65001:65012
    address-family ipv4 unicast
      allocate-label all
      redistribute static
    neighbor 192.168.1.24
      remote-as 65001
    address-family ipv4 labeled-unicast
```

Refer to the exhibit. The CE router has established a BGP peering with the PE router, and the CE will use the core infrastructure of the PE as a backbone carrier to support CSC. Which additional task can you perform to complete the configuration?

- A. Configure static routing on the CE router.
- B. Configure the address-family ipv4 labeled-unicast command under the neighbor configuration of the CE router for the PE.
- C. Change the rd value to 65001:65001 under the VRF section of the PE router.
- D. Configure OSPF on the PE router.

Correct Answer: D

QUESTION 2



Refer to the exhibit. Which result occurs when PE1 learns a new MAC address and all three PEs are enabled with EVPN native?

- A. A system notification is sent to the network administrator that triggers the manual configuration of the new MAC address on PE2 and PE3.
- B. The new MAC address is sent by BGP to PE2 and PE3 as a Type 2 BGP route.
- C. The MAC address is entered into the CAM table and is classified for use on the native VLAN
- D. The MAC address is entered into the CAM table only if it is learned on the native VLAN.

Correct Answer: B

Reference: https://www.cisco.com/c/en/us/td/docs/routers/asr9000/software/asr9k-r6-4/lxvpn/configuration/guide/b-l2vpn-cg-asr9000-64x/b-l2vpn-cg-asr9000-64x_chapter_01011.html

QUESTION 3

An engineer is investigating an MPLS LDP issue. Which command should an engineer use on a Cisco IOS XE device to display the contents of the LFIB?

- A. show mpls forwarding-table
- B. show mpls ldp neighbors
- C. show mpls ldp labels



D. show mpls ldp bindings

Correct Answer: A

Reference: <https://www.cisco.com/c/en/us/td/docs/ios-xml/ios/mppls/command/mp-cr-book/mp-s2.html>

QUESTION 4

The network engineering group of a large ISP needs to harden the management plane of its Cisco 9000 Series ASRs. While addressing IPv6 ICMP issues, they realized they have to limit the rate at which IPv6 ICMP error messages are sent out on the network. Which command do they need to apply?

A. icmp ipv6 rate-limit unreachable 1000

B. ipv6 rate-limit 1000

C. icmp ipv4 rate-limit unreachable 1000

D. ipv6 icmp error-interval 50 20

Correct Answer: D

Reference: https://www.cisco.com/c/en/us/td/docs/ios-xml/ios/ipv6_basic/configuration/xr-3s/ipv6b-xr-3s-book/ipv6-icmp-rate-lmt-xr.html

QUESTION 5

What must match in the EVPN and L2VPN configuration mode when configuring EVPN native in a router?

A. interface

B. address family

C. bridge domain

D. EVI

Correct Answer: D

Reference: https://www.cisco.com/c/en/us/td/docs/routers/asr9000/software/asr9k-r6-2/lxvpn/configuration/guide/b-l2vpn-cg-asr9000-62x/b-l2vpn-cg-asr9000-62x_chapter_01011.html

[300-515 PDF Dumps](#)

[300-515 VCE Dumps](#)

[300-515 Practice Test](#)