



# 300-370<sup>Q&As</sup>

Troubleshooting Cisco Wireless Enterprise Networks

## Pass Cisco 300-370 Exam with 100% Guarantee

Free Download Real Questions & Answers **PDF** and **VCE** file from:

<https://www.pass4itsure.com/300-370.html>

100% Passing Guarantee  
100% Money Back Assurance

Following Questions and Answers are all new published by Cisco  
Official Exam Center

- ⚙ **Instant Download** After Purchase
- ⚙ **100% Money Back** Guarantee
- ⚙ **365 Days** Free Update
- ⚙ **800,000+** Satisfied Customers





### QUESTION 1

You are troubleshooting an AP joining issue. You have captured the CAPWAP join request sent from the AP to the controller. Which information do you export?

- A. MAC address of the AP that issues the join request
- B. version of the controller
- C. AP broadcast domain
- D. name of the controller that issues the joining request

Correct Answer: A

---

### QUESTION 2

An engineer is troubleshooting AP join issues on a wireless infrastructure. While gathering debugs, the engineer notices that one of the commands may generate an excessive amount of data on the console. Which command causes this to occur?

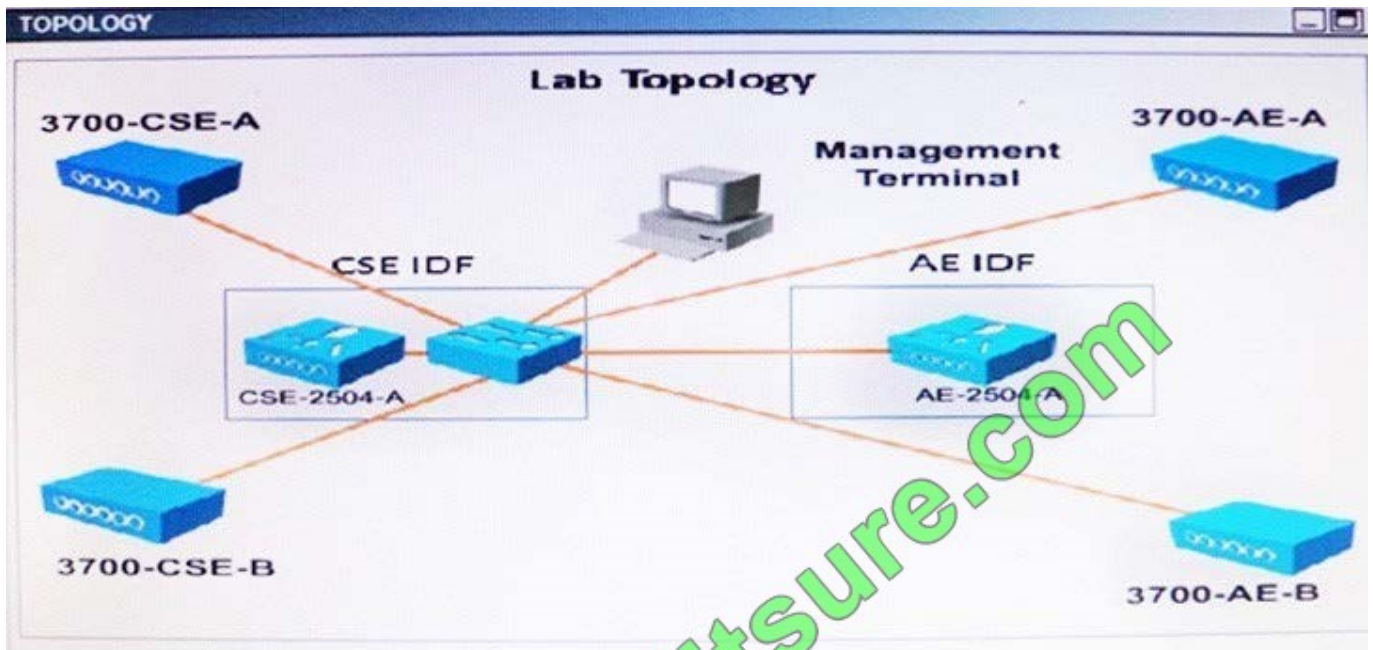
- A. debug capwap detail enable
- B. debug capwap errors enable
- C. debug capwap info enable
- D. debug capwap events enable
- E. debug capwap packet enable
- F. debug capwap payload enable

Correct Answer: B

---

### QUESTION 3

Refer to the exhibit: Which two statements about the WLAN are true? (Choose two.)



| Packet | Source         | Destination    | Channel | Data Rate | Size | Protocol              |
|--------|----------------|----------------|---------|-----------|------|-----------------------|
| 3377   | Intel:2F:D3:70 | Cisco:10:44:EF | 136     | 24.0      | 48   | EAP Response          |
| 3378   | Cisco:10:44:EF | Intel:2F:D3:70 | 136     | 24.0      | 18   | 802.11 Ack            |
| 3379   | Cisco:10:44:EF | Intel:2F:D3:70 | 136     | 24.0      | 85   | EAP Request           |
| 3380   | Intel:2F:D3:70 | Cisco:10:44:EF | 136     | 6.0       | 101  | EAP Response          |
| 3381   | Cisco:10:44:EF | Intel:2F:D3:70 | 136     | 6.0       | 18   | 802.11 Ack            |
| 3382   | Cisco:10:44:EF | Intel:2F:D3:70 | 136     | 24.0      | 117  | EAP Request           |
| 3383   | Intel:2F:D3:70 | Cisco:10:44:EF | 136     | 24.0      | 149  | EAP Response          |
| 3384   | Cisco:10:44:EF | Intel:2F:D3:70 | 136     | 24.0      | 18   | 802.11 Ack            |
| 3385   | Cisco:10:44:EF | Intel:2F:D3:70 | 136     | 24.0      | 133  | EAP Request           |
| 3386   | Intel:2F:D3:70 | Cisco:10:44:EF | 136     | 24.0      | 85   | EAP Response          |
| 3387   | Cisco:10:44:EF | Intel:2F:D3:70 | 136     | 24.0      | 18   | 802.11 Ack            |
| 3388   | Intel:2F:D3:70 | Cisco:10:44:EF | 136     | 24.0      | 85   | EAP Response          |
| 3389   | Cisco:10:44:EF | Intel:2F:D3:70 | 136     | 24.0      | 18   | 802.11 Ack            |
| 3390   | Cisco:10:44:EF | Intel:2F:D3:70 | 136     | 24.0      | 46   | EAP Success           |
| 3391   | Cisco:10:44:EF | Intel:2F:D3:70 | 136     | 24.0      | 159  | EAPOL-Key             |
| 3392   | Intel:2F:D3:70 | Cisco:10:44:EF | 136     | 24.0      | 161  | EAPOL-Key             |
| 3393   | Cisco:10:44:EF | Intel:2F:D3:70 | 136     | 24.0      | 18   | 802.11 Ack            |
| 3394   | Cisco:10:44:EF | Intel:2F:D3:70 | 136     | 24.0      | 193  | EAPOL-Key             |
| 3395   | Intel:2F:D3:70 | Cisco:10:44:EF | 136     | 24.0      | 137  | EAPOL-Key             |
| 3396   | Cisco:10:44:EF | Intel:2F:D3:70 | 136     | 24.0      | 18   | 802.11 Ack            |
| 3397   | Cisco:10:44:EF | Intel:2F:D3:70 | 136     | 24.0      | 24   | 802.11 RTS            |
| 3398   | Cisco:10:44:EF | Intel:2F:D3:70 | 136     | 2.0       | 108  | 802.11 Encrypted Data |
| 3399   | Cisco:10:44:EF | Intel:2F:D3:70 | 136     | 24.0      | 24   | 802.11 RTS            |
| 3400   | Cisco:10:44:EF | Intel:2F:D3:70 | 136     | 2.0       | 108  | 802.11 Encrypted Data |

- A. The client has a 5 GHz connection.
- B. The client has authenticated.
- C. The client is 802.11n capable.
- D. The Cisco device is a 3600 series AP.
- E. 802.11b data rates are disabled in this WLAN.

Correct Answer: CE



#### QUESTION 4

Which three options can be configured as roaming triggers on a WGB? (Choose three.)

- A. SNR
- B. co-channel interference
- C. RSSI
- D. packet fragmentation
- E. packet retries
- F. minimum data rate

Correct Answer: CEF

---

#### QUESTION 5

Clients are maintaining association to access points that they were previously connected to rather than roaming to adjacent access points with higher received signal strength.

Which two actions can be taken to fix this issue? (Choose two.)

- A. Set DCA channel sensitivity to low.
- B. Utilize Rx-SOP.
- C. Increase access point power.
- D. Enable optimized roaming.
- E. Add access points to the area.

Correct Answer: AD

[300-370 VCE Dumps](#)

[300-370 Study Guide](#)

[300-370 Exam Questions](#)



To Read the [Whole Q&As](#), please purchase the [Complete Version](#) from [Our website](#).

## Try our product !

100% Guaranteed Success

100% Money Back Guarantee

365 Days Free Update

Instant Download After Purchase

24x7 Customer Support

Average 99.9% Success Rate

More than 800,000 Satisfied Customers Worldwide

Multi-Platform capabilities - Windows, Mac, Android, iPhone, iPod, iPad, Kindle

We provide exam PDF and VCE of Cisco, Microsoft, IBM, CompTIA, Oracle and other IT Certifications. You can view Vendor list of All Certification Exams offered:

<https://www.pass4itsure.com/allproducts>

## Need Help

Please provide as much detail as possible so we can best assist you.

To update a previously submitted ticket:



|   |   |  |
|---|---|--|
|  <b>One Year Free Update</b> <p>Free update is available within One Year after your purchase. After One Year, you will get 50% discounts for updating. And we are proud to boast a 24/7 efficient Customer Support system via Email.</p> |  <b>Money Back Guarantee</b> <p>To ensure that you are spending on quality products, we provide 100% money back guarantee for 30 days from the date of purchase.</p> |  <b>Security &amp; Privacy</b> <p>We respect customer privacy. We use McAfee's security service to provide you with utmost security for your personal information &amp; peace of mind.</p> |
|---|---|--|

Any charges made through this site will appear as Global Simulators Limited.

All trademarks are the property of their respective owners.

Copyright © pass4itsure, All Rights Reserved.