



# 300-210<sup>Q&As</sup>

Cisco Threat Control Solutions

**Pass Cisco 300-210 Exam with 100% Guarantee**

Free Download Real Questions & Answers **PDF** and **VCE** file from:

<https://www.pass4itsure.com/300-210.html>

100% Passing Guarantee  
100% Money Back Assurance

Following Questions and Answers are all new published by Cisco  
Official Exam Center

-  **Instant Download** After Purchase
-  **100% Money Back** Guarantee
-  **365 Days** Free Update
-  **800,000+** Satisfied Customers





### QUESTION 1

Over which two ports does the ISR G2 connector for CWS support redirection of HTTP traffic? (Choose two)

- A. TCP port 65535
- B. UDP port 8080
- C. TCP port 88
- D. TCP port 80
- E. UDP port 80

Correct Answer: AD

---

### QUESTION 2

Upon receiving a digital certificate, what are three steps that a Cisco ASA will perform to authenticate the digital certificate? (Choose three.)

- A. The identity certificate validity period is verified against the system clock of the Cisco ASA.
- B. Identity certificates are exchanged during IPsec negotiations.
- C. The identity certificate signature is validated by using the stored root certificate.
- D. The signature is validated by using the stored identity certificate.
- E. If enabled, the Cisco ASA locates the CRL and validates the identity certificate.

Correct Answer: ACE

---

### QUESTION 3



### Instructions

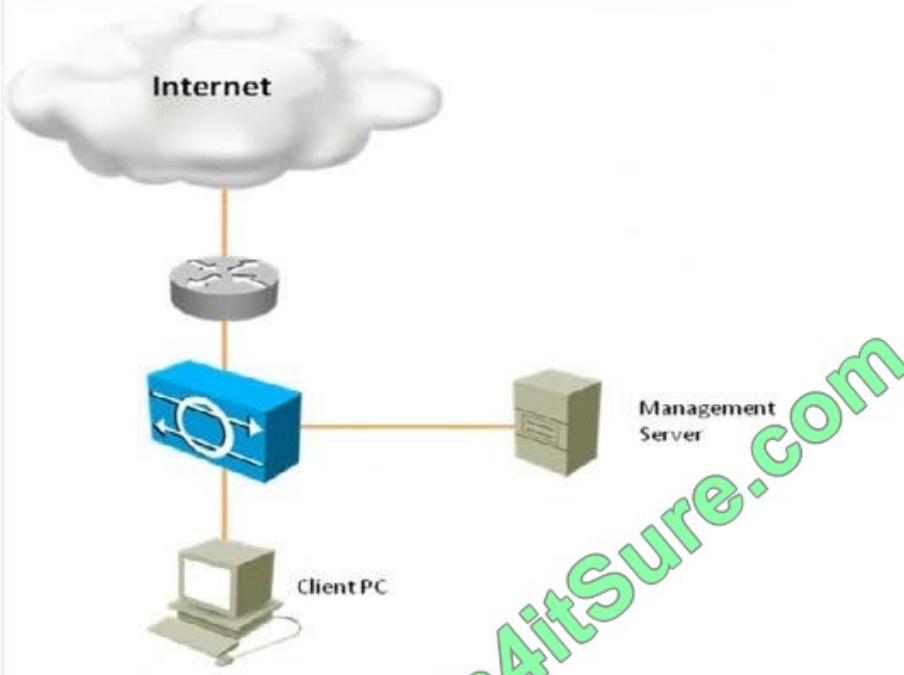
You can click the grey buttons at the bottom of this frame to view the different windows.

To minimize the window, click the [-]. To move the window, click the title bar and drag the window.

### Scenario

Using Cisco IPS Device Manager (IDM), answer the multiple choice questions.

### Topology



The screenshot shows the Cisco IDM 7.0 interface. The main dashboard includes several panels:

- Sensor Info - sensor**: Host Name: ips, IP Address: 172.26.26.53, IPS Version: 7.0(2), Device Type: IPS-4240-K9, In Bypass: No, Total Sensing Interfaces: 4, Total Data Storage: 788 MB, Analysis Engine Status: Running Normally.
- Sensor Health - sensor**: Two gauges for Sensor Health (Critical) and Network Security Health (Normal).
- CPU, Memory, & Load - sensor**: A gauge for Inspection Load (1) and bar charts for CPU Usage (1%), Memory Usage (System: 73%, Analysis Engine: 23%), and Disk Usage (boot: 51%, system: 44%, application-log: 24%).
- Licensing - sensor**: License Status: Not expired until Aug 27, 2011 4:59:59 PM MST, Signature Version: 425.0, Released On: Aug 16, 2009 5:00:00 PM MST, Applied On: Oct 15, 2009 12:43:54 PM MST.
- Interface Status - sensor**: Table showing interface details.

Interface	Link	Enabled	Speed (..	Mode	Received Packets	Transmitted Packets
GigabitEthernet0/0	Up	Yes	100	inline-vf...	7,157,393	6,467,350
GigabitEthernet0/1	d...	Yes		unpaired	0	0

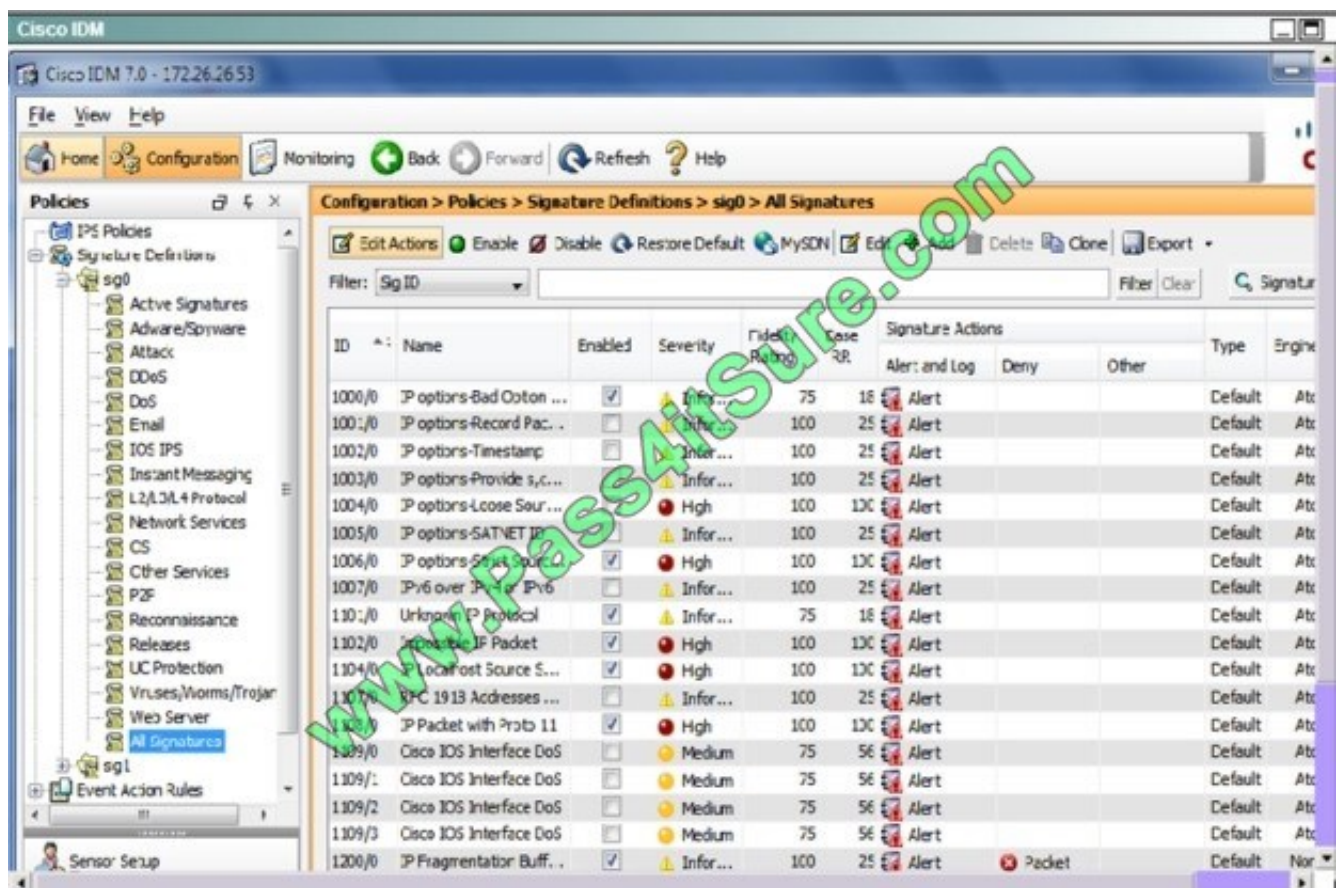


Which two statements about Signature 1104 are true? (Choose two.)

- A. This is a custom signature.
- B. The severity level is High.
- C. This signature has triggered as indicated by the red severity icon.
- D. Produce Alert is the only action defined.
- E. This signature is enabled, but inactive, as indicated by the /0 to that follows the signature number.

Correct Answer: BD

This can be seen here where signature 1004 is the 5th one down:



#### QUESTION 4

A network administrator noticed that all traffic that is redirected to the Cisco WSA from the Cisco ASA firewall is unable to get to Internet in a transparent proxy environment using WCCP. Which troubleshooting action can be taken on the CLI to make sure that WCCP communication is not failing?

- A. Ping the WCCP device
- B. Explicitly point to the browser to the proxy



C. Disable WCCP

D. Check WCCP logs in debug mode to check there are no pending HIA or ISY request

Correct Answer: A

---

#### QUESTION 5

Which SSL traffic decryption feature is used when decrypting traffic from an external host to server on your network?

A. decrypt by stripping the server certificate

B. decrypt with a known public key

C. decrypt by resigning the server certificate

D. decrypt with a known private key

Correct Answer: D

[300-210 PDF Dumps](#)

[300-210 VCE Dumps](#)

[300-210 Study Guide](#)



To Read the [Whole Q&As](#), please purchase the [Complete Version](#) from [Our website](#).

## Try our product !

100% Guaranteed Success

100% Money Back Guarantee

365 Days Free Update

Instant Download After Purchase

24x7 Customer Support

Average 99.9% Success Rate

More than 800,000 Satisfied Customers Worldwide

Multi-Platform capabilities - [Windows](#), [Mac](#), [Android](#), [iPhone](#), [iPod](#), [iPad](#), [Kindle](#)

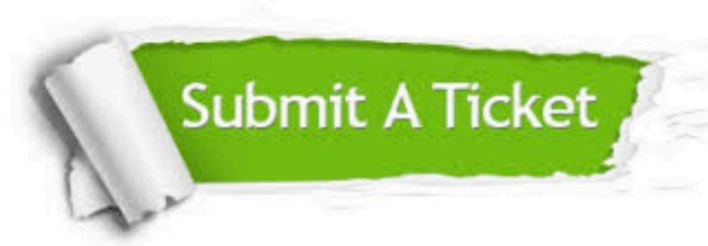
We provide exam PDF and VCE of Cisco, Microsoft, IBM, CompTIA, Oracle and other IT Certifications. You can view Vendor list of All Certification Exams offered:

<https://www.pass4itsure.com/allproducts>

## Need Help

Please provide as much detail as possible so we can best assist you.

To update a previously submitted ticket:



 <p><b>One Year Free Update</b> Free update is available within One Year after your purchase. After One Year, you will get 50% discounts for updating. And we are proud to boast a 24/7 efficient Customer Support system via Email.</p>	 <p><b>Money Back Guarantee</b> To ensure that you are spending on quality products, we provide 100% money back guarantee for 30 days from the date of purchase.</p>	 <p><b>Security &amp; Privacy</b> We respect customer privacy. We use McAfee's security service to provide you with utmost security for your personal information &amp; peace of mind.</p>
---	---	--

Any charges made through this site will appear as Global Simulators Limited.

All trademarks are the property of their respective owners.

Copyright © pass4itsure, All Rights Reserved.