



# 300-180<sup>Q&As</sup>

Troubleshooting Cisco Data Center Infrastructure

## Pass Cisco 300-180 Exam with 100% Guarantee

Free Download Real Questions & Answers **PDF** and **VCE** file from:

<https://www.pass4itsure.com/300-180.html>

100% Passing Guarantee  
100% Money Back Assurance

Following Questions and Answers are all new published by Cisco  
Official Exam Center

- ⚙ **Instant Download** After Purchase
- ⚙ **100% Money Back** Guarantee
- ⚙ **365 Days** Free Update
- ⚙ **800,000+** Satisfied Customers





### QUESTION 1

What is the correct sequence to export tech support data from the Cisco IMC GUI interface?

- A. Admin tab > Utilities > Export Technical Support to TFTP
- B. Utilities tab > Utilities > Export Technical Support to TFTP
- C. Server tab > Utilities > Export Technical Support to TFTP
- D. Communications tab > Utilities > Export Technical Support to TFTP
- E. Support tab > Utilities > Export Technical Support to TFTP
- F. Help tab > Utilities > Export Technical Support to TFTP

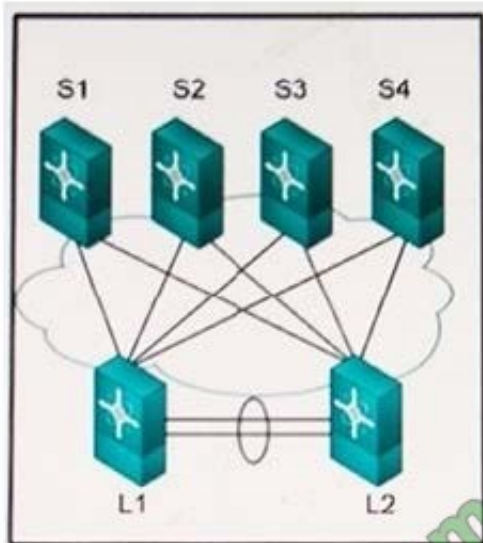
Correct Answer: A

---

### QUESTION 2

Refer to the exhibit.

You are troubleshooting a Cisco FabricPath anycast HSRP configuration issue. What is the cause of the issue?

**S1-Configuration:**

```
hsrp anycast 10 ipv4
switch-id 50
vlan 5, 6, 7
priority 120
no shutdown
interface Vlan5
hsrp 5
ip 1 2 3 4
```

**S2-Configuration:**

```
hsrp anycast 10 ipv4
switch-id 50
vlan 5, 6, 7
priority 120
no shutdown
interface Vlan5
hsrp 5
ip 1 2 3 4
```

**S3-Configuration:**

```
hsrp anycast 10 ipv4
switch-id 50
vlan 5, 6, 7
priority 115
no shutdown
interface Vlan5
hsrp 5
ip 1.2.3.4
```

**S4-Configuration:**

```
hsrp anycast 10 ipv4
switch-id 50
vlan 5, 6, 7
priority 115
no shutdown
interface Vlan5
hsrp 5
ip 1.2.3.4
```

- A. HSRP version 2 must be used with HSRP anycast.
- B. The switch ID that is used in each switch configuration must be different.
- C. L1 and L2 would not be connected.
- D. The priority for S1 and S2 is the same in each switch configuration.

Correct Answer: B

**QUESTION 3**

A customer calls in a trouble ticket and explains that after a power failure, the UPS was discovered to be defective and the Cisco UCS C210 M2 server running Windows 2008 R2 went down without proper shutdown. After restarting the server, you discover the RAID 5 array rebuilding parity. Which write-cache settings on the LSI MegaRAID 9260-4i controller explain this symptom?

- A. write back
- B. write through
- C. write back with BBU
- D. no write cache
- E. no hot spare

Correct Answer: A

---

**QUESTION 4**

Refer to the exhibit.

```
NEXUS-1# show ip ospf neighbor

Neighbor ID  Pri  State  Dead Time  Address  Interface
10.1.5.1    1    INIT/-  00:00:34  10.10.1.1  ethernet 1/1
NEXUS-1#

NEXUS-2# show ip ospf neighbor

Neighbor ID  Pri  State  Dead Time  Address  Interface
10.1.5.1    1    INIT/-  00:00:34  10.1.5.1  ethernet 1/1
NEXUS-2#
```

The OSPF neighbor is stuck in the INIT state. Which cause of this issue is true?

- A. An ACL is blocking unicast packets
- B. An ACL is blocking the hello packets.
- C. The ID of the router is the same as the ID of the neighbor.
- D. The MTU is misconfigured.

Correct Answer: B

---

**QUESTION 5**



When you configure the settings for the core file exporter via UCS Manager, which field is required to configure a destination for the core files?

- A. Admin State
- B. Description
- C. Port
- D. Hostname
- E. Path

Correct Answer: D

[Latest 300-180 Dumps](#)

[300-180 VCE Dumps](#)

[300-180 Braindumps](#)



To Read the [Whole Q&As](#), please purchase the [Complete Version](#) from [Our website](#).

## Try our product !

100% Guaranteed Success

100% Money Back Guarantee

365 Days Free Update

Instant Download After Purchase

24x7 Customer Support

Average 99.9% Success Rate

More than 800,000 Satisfied Customers Worldwide

Multi-Platform capabilities - Windows, Mac, Android, iPhone, iPod, iPad, Kindle

We provide exam PDF and VCE of Cisco, Microsoft, IBM, CompTIA, Oracle and other IT Certifications. You can view Vendor list of All Certification Exams offered:

<https://www.pass4itsure.com/allproducts>

## Need Help

Please provide as much detail as possible so we can best assist you.

To update a previously submitted ticket:



 <b>One Year Free Update</b> <p>Free update is available within One Year after your purchase. After One Year, you will get 50% discounts for updating. And we are proud to boast a 24/7 efficient Customer Support system via Email.</p>	 <b>Money Back Guarantee</b> <p>To ensure that you are spending on quality products, we provide 100% money back guarantee for 30 days from the date of purchase.</p>	 <b>Security &amp; Privacy</b> <p>We respect customer privacy. We use McAfee's security service to provide you with utmost security for your personal information &amp; peace of mind.</p>
---	---	--

Any charges made through this site will appear as Global Simulators Limited.

All trademarks are the property of their respective owners.

Copyright © pass4itsure, All Rights Reserved.