



201^{Q&As}

TMOS Administration

Pass F5 201 Exam with 100% Guarantee

Free Download Real Questions & Answers **PDF** and **VCE** file from:

<https://www.pass4itsure.com/201.html>

100% Passing Guarantee
100% Money Back Assurance

Following Questions and Answers are all new published by F5 Official Exam Center

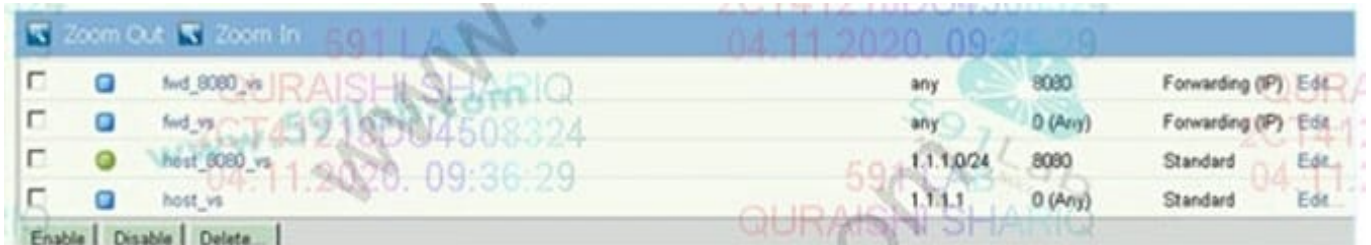
- ⚙️ **Instant Download** After Purchase
- ⚙️ **100% Money Back** Guarantee
- ⚙️ **365 Days** Free Update
- ⚙️ **800,000+** Satisfied Customers





QUESTION 1

Refer to the exhibit



<input type="checkbox"/>	fw_8080_vs	any	8080	Forwarding (IP)	Edit
<input type="checkbox"/>	fw_vs	any	0 (Any)	Forwarding (IP)	Edit
<input type="checkbox"/>	host_8080_vs	1.1.1.0/24	8080	Standard	Edit
<input type="checkbox"/>	host_vs	1.1.1.1	0 (Any)	Standard	Edit

Enable | Disable | Delete

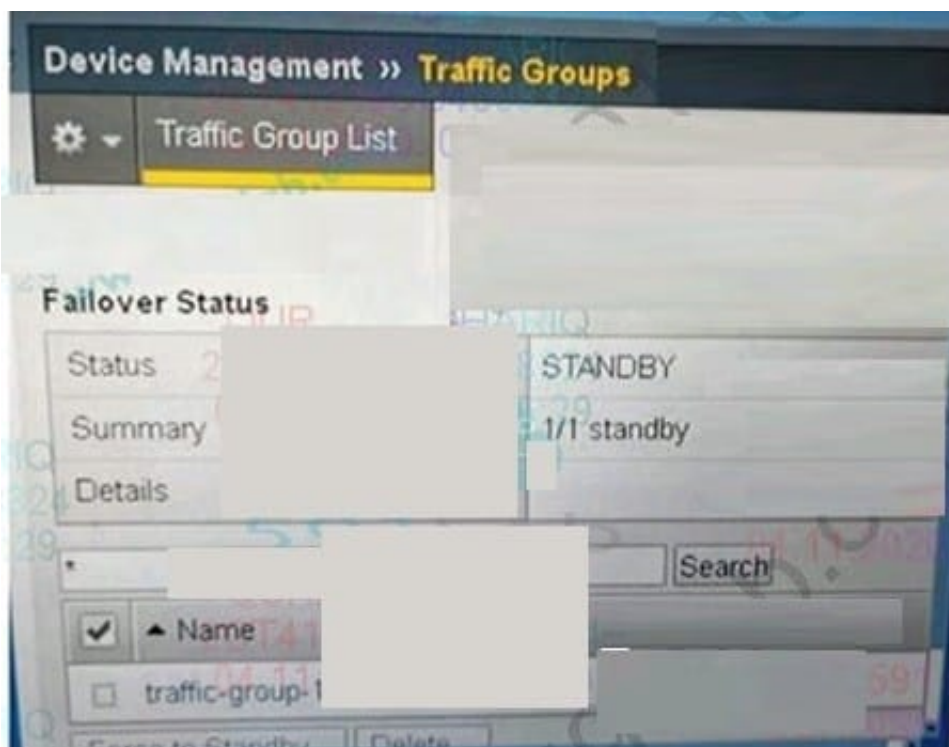
A connection is being established to IP 1.1.1.1 on port 8080. Which virtual server will handle the connection?

- A. fwd_8080_vs
- B. host_vs
- C. host_8080_VS
- D. fwdvs

Correct Answer: B

QUESTION 2

Refer to the exhibit.





A BIG-IP Administrator needs to fail over the active device. The administrator logs into the Configuration Utility and navigates to Device Management > Traffic Group. However, Force to Standby is greyed out. What is causing this issue?

- A. The BIG-IP Administrator is NOT logged into command line to fail over
- B. The BIG-IP Administrator is on the Standby Device
- C. The BIG-IP Administrator is logged in as root
- D. The BIG-IP Administrator is logged in as administrator

Correct Answer: B

QUESTION 3

Which statement is true regarding failover?

- A. Hardware failover is disabled by default.
- B. Hardware failover can be used in conjunction with network failover.
- C. If the hardware failover cable is disconnected, both BIGIP devices will always assume the active role.
- D. By default, hardware fail over detects voltage across the failover cable and monitors traffic across the internal VLAN.

Correct Answer: B

QUESTION 4

A BIG-IP Administrator makes a configuration change to the BIG-IP device. Which file logs the message regarding the configuration change?

- A. /var/log/messages
- B. /var/log/audit
- C. /var/log/user.log
- D. /var/log/secure

Correct Answer: B

About audit logging Audit logging is an optional feature that logs messages whenever a BIG-IP system object, such as a virtual server or a load balancing pool, is configured (that is, created, modified, or deleted). The BIG-IP system logs the messages for these auditing events in the file /var/log/audit. There are three ways that objects can be configured: By user action, By system action, By loading configuration data. Whenever an object is configured in one of these ways, the BIG-IP system logs a message to the audit log.



QUESTION 5

A virtual server is listening at 10.10.1.100:any and has the following iRule associated with it:

```
when CLIENT_ACCEPTED { if {[TCP::local_port] equals 21 } { pool
```

```
ftppool } elseif {[TCP::local_port] equals 23 } { pool telnetpool }
```

If a user connects to 10.10.1.100 and port 22, which pool will receive the request?

- A. ftppool
- B. telnetpool
- C. None. The request will be dropped.
- D. Unknown. The pool cannot be determined from the information provided.

Correct Answer: D

[201 VCE Dumps](#)

[201 Study Guide](#)

[201 Exam Questions](#)