



201^{Q&As}

TMOS Administration

Pass F5 201 Exam with 100% Guarantee

Free Download Real Questions & Answers **PDF** and **VCE** file from:

<https://www.pass4itsure.com/201.html>

100% Passing Guarantee
100% Money Back Assurance

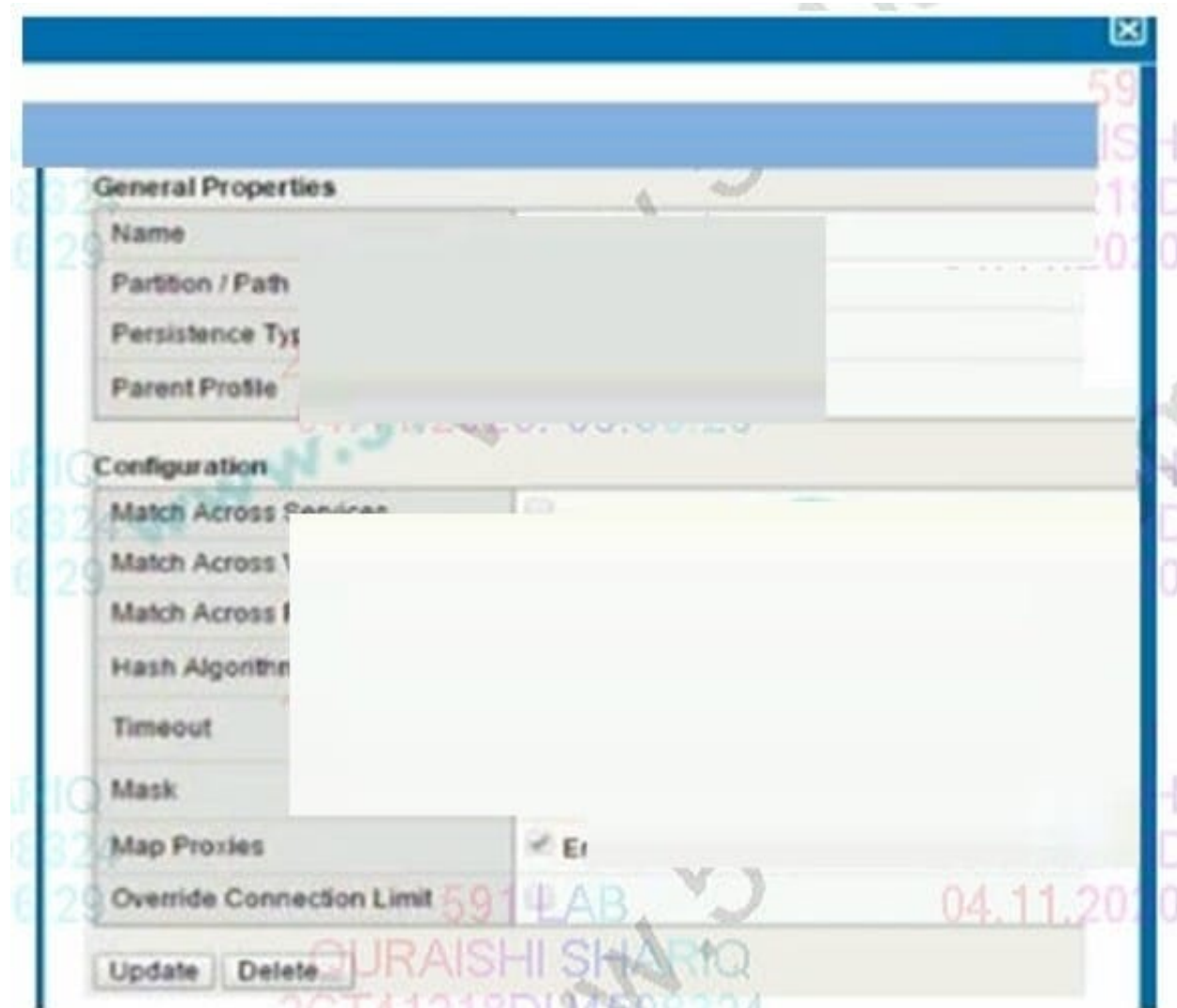
Following Questions and Answers are all new published by F5 Official Exam Center

- ⚙️ **Instant Download** After Purchase
- ⚙️ **100% Money Back** Guarantee
- ⚙️ **365 Days** Free Update
- ⚙️ **800,000+** Satisfied Customers



**QUESTION 1**

Refer to the exhibit.



How long will the persistence record remain in the table?

- A. 180 seconds after the last packet
- B. 180 seconds after the initial table entry
- C. 300 seconds after the initial table entry
- D. 300 seconds after the last packet

Correct Answer: D

QUESTION 2



A configuration change is made on the standby member of a device group.

What is displayed as "Recommended Action" on the Device Management Overview screen?

- A. Force active member of device group to standby
- B. Activate device with the most recent configuration
- C. Synchronize the active member configuration to the group.
- D. Synchronize the standby member configuration to the group

Correct Answer: D

QUESTION 3

How should a BIG-IP Administrator control the amount of traffic that a newly enabled pool member receives?

- A. set the Slow Ramp Time
- B. set a Connection Limit
- C. set the Priority Group Activation
- D. set a Health Monitor

Correct Answer: A

Explanation: Slow Ramp Time

Specifies the duration during which the system sends less traffic to a newly-enabled pool member. The amount of traffic is based on the ratio of how long the pool member has been available compared to the slow ramp time, in seconds.

Once the pool member has been online for a time greater than the slow ramp time, the pool member receives a full proportion of the incoming traffic. Slow ramp time is particularly useful for the least connections load balancing mode.

Setting this to a nonzero value can cause unexpected Priority Group behavior, such as load balancing to a low-priority member even with enough high-priority servers.

QUESTION 4

Which statement is true concerning cookie persistence?

- A. Cookie persistence allows persistence independent of IP addresses.
- B. Cookie persistence allows persistence even if the data are encrypted from client to pool member.
- C. Cookie persistence uses a cookie that stores the virtual server, pool name, and member IP address in clear text.
- D. If a client's browser accepts cookies, cookie persistence will always cause a cookie to be written to the client's file system.

Correct Answer: A



QUESTION 5

How is MAC masquerading configured?

- A. Specify the desired MAC address for each VLAN for which you want this feature enabled.
- B. Specify the desired MAC address for each selfIP address for which you want this feature enabled.
- C. Specify the desired MAC address for each VLAN on the active system and synchronize the systems.
- D. Specify the desired MAC address for each floating selfIP address for which you want this feature enabled.

Correct Answer: A

[201 PDF Dumps](#)

[201 Practice Test](#)

[201 Braindumps](#)