



200-355^{Q&As}

Implementing Cisco Wireless Network Fundamentals

Pass Cisco 200-355 Exam with 100% Guarantee

Free Download Real Questions & Answers **PDF** and **VCE** file from:

<https://www.pass4itsure.com/200-355.html>

100% Passing Guarantee
100% Money Back Assurance

Following Questions and Answers are all new published by Cisco
Official Exam Center

-  **Instant Download** After Purchase
-  **100% Money Back** Guarantee
-  **365 Days** Free Update
-  **800,000+** Satisfied Customers



**QUESTION 1**

A network engineer is troubleshooting a LAP that is unable to join the controller and receives this message:

LWAPP_CLIENT_ERROR_DEBUG: No more AP manager IP addresses remain

What does the log indicate?

- A. An AP manager has the same IP address as another AP manager.
- B. A LAP has the same IP address as the AP manager.
- C. Two or more LAPs have the same IP address.
- D. Two or more controllers have the same IP address.

Correct Answer: B

This is another common issue that is seen when the AP tries to join the WLC. You might see this error message when the AP tries to join the controller. No more AP manager IP addresses remain One of the reasons for this error message is

when there is a duplicate IP address on the network that matches the AP manager IP address. In such a case, the LAP keeps power cycling and cannot join the controller.

The debugs will show that the WLC receives LWAPP discovery requests from the APs and transmits a LWAPP discovery response to the APs. However, WLCs do not receive LWAPP join requests from the APs.

In order to troubleshoot this issue, ping the AP manager from a wired host on the same IP subnet as the AP manager. Then, check the ARP cache. If a duplicate IP address is found, remove the device with the duplicate IP address or change

the IP address on the device so that it has a unique IP address on the network.

The AP can then join the WLC.

Reference: <https://learningnetwork.cisco.com/docs/DOC-12871>

QUESTION 2

Drag the characteristics on the left that are associated with the specific controller-based AP deployment mode and drop them in the appropriate category on the right.

Select and Place:



- Available on Cisco 3500 Series APs
- A minimum of a 500-byte MTU is supported between the AP and the controller
- Allows APs to act as a network-connected sensor
- May operate in connected or standalone modes
- Mode used to set up a mesh network, either indoor or outdoor
- APs can switch client data traffic locally and perform client authentication locally when their connection to a centralized controller is lost

AP SE-Connect Mode

AP Bridging Mode

H-REAP

Correct Answer:



AP SE-Connect Mode

Available on Cisco 3500 Series APs

Allows APs to act as a network-connected sensor

AP Bridging Mode

Mode used to set up a mesh network, either indoor or outdoor

H-REAP

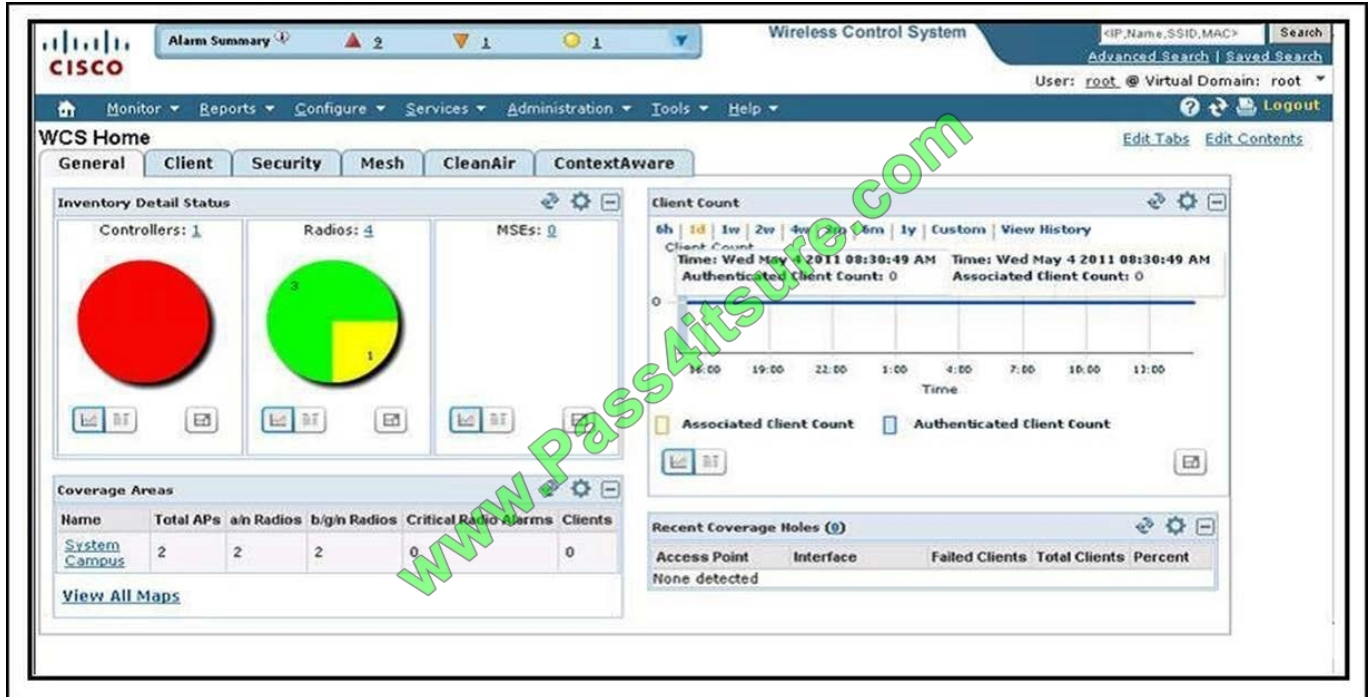
A minimum of a 500-byte MTU is supported between the AP and the controller

May operate in connected or standalone modes

APs can switch client data traffic locally and perform client authentication locally when their connection to a centralized controller is lost

QUESTION 3

Refer to the exhibit.



Which action allows you to view a summary count by alarm types for the displayed total of 11 alarms?

- A. Choose Monitor > Alarms
- B. Click the Security tab
- C. Click a respective number in the Alarm Summary
- D. Click the Alarm Summary blue arrow
- E. Choose Home (house icon) > Alarm Summary

Correct Answer: D

QUESTION 4

What is the IEEE name for a group of access points that are connected by using the Ethernet?

- A. ESS
- B. BSS
- C. IBSS
- D. ISS

Correct Answer: A

The wired section of the network that can be reached through the AP is called, from the perspective of the wireless side, the Distribution System (DS). When the distribution system links two APs, or two cells, via Ethernet, the group is called an Extended Service Set (ESS).

**QUESTION 5**

You are in a coffee shop and you have connected to their wireless hot-spot. Your Windows 7 wireless client shows five green bars with a yellow shield. Which statement about the level of signal strength and the WLAN security that is present is true?

- A. You have excellent signal strength and a secure network connection.
- B. Your wireless client needs a username and password before it can connect to the WLAN.
- C. You have excellent signal strength and the client is waiting for you to enter a username and password.
- D. Your laptop is not receiving a signal.
- E. Your laptop is receiving an excellent signal and the network security is open.

Correct Answer: E

Five green bars mean that the signal you are receiving is excellent (there are up to 5 bars) and the yellow shield is a warning indication signal that the security settings have been set to open, meaning no authentication is needed.

[200-355 VCE Dumps](#)

[200-355 Practice Test](#)

[200-355 Study Guide](#)



To Read the [Whole Q&As](#), please purchase the [Complete Version](#) from [Our website](#).

Try our product !

100% Guaranteed Success

100% Money Back Guarantee

365 Days Free Update

Instant Download After Purchase

24x7 Customer Support

Average 99.9% Success Rate

More than 800,000 Satisfied Customers Worldwide

Multi-Platform capabilities - [Windows](#), [Mac](#), [Android](#), [iPhone](#), [iPod](#), [iPad](#), [Kindle](#)

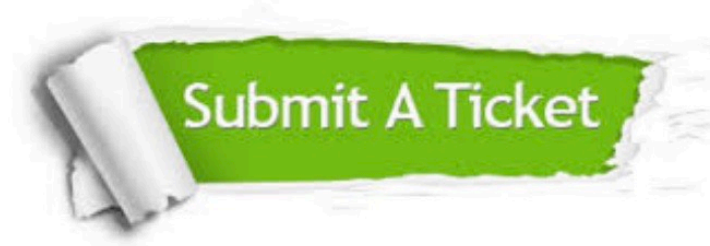
We provide exam PDF and VCE of Cisco, Microsoft, IBM, CompTIA, Oracle and other IT Certifications. You can view Vendor list of All Certification Exams offered:

<https://www.pass4itsure.com/allproducts>

Need Help

Please provide as much detail as possible so we can best assist you.

To update a previously submitted ticket:



 <p>One Year Free Update Free update is available within One Year after your purchase. After One Year, you will get 50% discounts for updating. And we are proud to boast a 24/7 efficient Customer Support system via Email.</p>	 <p>Money Back Guarantee To ensure that you are spending on quality products, we provide 100% money back guarantee for 30 days from the date of purchase.</p>	 <p>Security & Privacy We respect customer privacy. We use McAfee's security service to provide you with utmost security for your personal information & peace of mind.</p>
---	---	--

Any charges made through this site will appear as Global Simulators Limited.

All trademarks are the property of their respective owners.

Copyright © pass4itsure, All Rights Reserved.