



200-301^{Q&As}

Implementing and Administering Cisco Solutions (CCNA) (Include Newest Simulation Labs)

Pass Cisco 200-301 Exam with 100% Guarantee

Free Download Real Questions & Answers **PDF** and **VCE** file from:

<https://www.pass4itsure.com/200-301.html>

100% Passing Guarantee
100% Money Back Assurance

Following Questions and Answers are all new published by Cisco
Official Exam Center

- ⚙ **Instant Download** After Purchase
- ⚙ **100% Money Back** Guarantee
- ⚙ **365 Days** Free Update
- ⚙ **800,000+** Satisfied Customers





QUESTION 1

What describes the functionality of southbound APIs?

- A. They enable communication between the controller and the network device.
- B. They communicate with the management plane.
- C. They use HTTP messages to communicate.
- D. They convey information from the controller to the SDN applications.

Correct Answer: A

QUESTION 2

Which DSCP per-hop forwarding behavior is divided into subclasses based on drop probability?

- A. expedited
- B. default
- C. assured
- D. class-selector

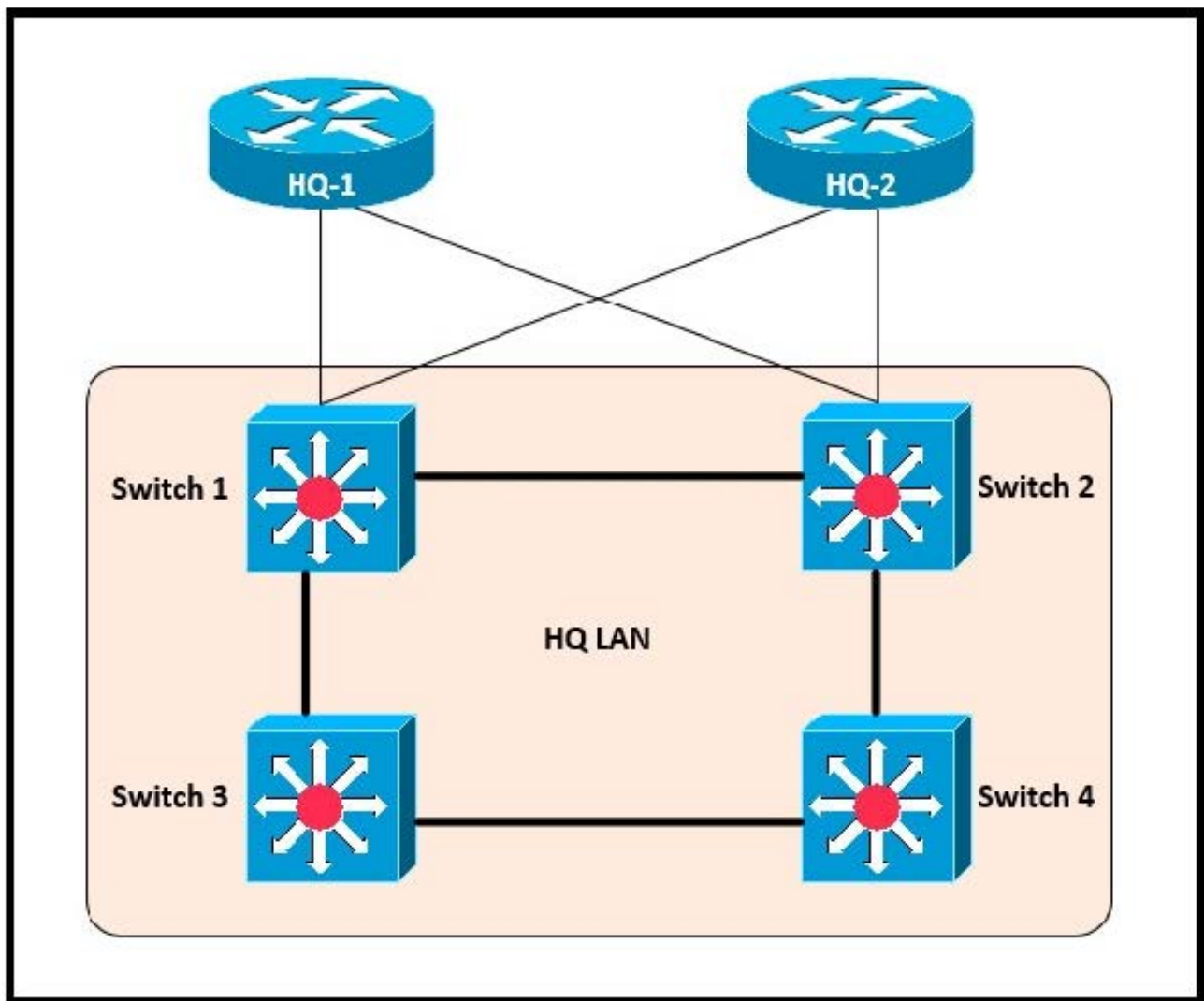
Correct Answer: C

The DSCP per-hop forwarding behavior that is divided into subclasses based on drop probability is the Assured Forwarding (AF) behavior. The AF behavior is divided into 4 subclasses (AF1, AF2, AF3, and AF4), each with 3 drop probabilities. Each forwarding class provides 3 drop precedences, which allow different levels of drop probability to be assigned to packets with different DSCP values.

Therefore, the AF behavior is used to provide a differentiated quality of service for network traffic by dividing it into subclasses based on drop probability.

QUESTION 3

Refer to the exhibit.



After the election process, what is the root bridge in the HQ LAN?

1.

Switch 1: 0C:E0:38:81:32:58

2.

Switch 2: 0C:0E:15:22:1A:61

3.

Switch 3: 0C:0E:15:1D:3C:9A

4.

Switch 4: 0C:E0:19:A1:4D:16

A. Switch 1

B. Switch 2



C. Switch 3

D. Switch 4

Correct Answer: C

The root bridge is determined by the lowest bridge ID, which consists of the priority value and the MAC address. Because the priority values of all of the switches are not available, the MAC address is used to determine the root bridge. Because S3 has the lowest MAC address, S3 becomes the root bridge.

QUESTION 4

DRAG DROP

Drag the IPv6 DNS record types from the left onto the description on the right.

Select and Place:

AAAA	aliases one name to another
CNAME	associates the domain serial number with its owner
NS	correlates a domain with its authoritative name servers
PTR	correlates a host name with an IP address
SOA	supports reverse name lookups

Correct Answer:



	CNAME
	SOA
	NS
	AAAA
	PTR

[https://ns1.com/resources/dns-types-records-servers-andqueries#:~:text=Address%20Mapping%20record%20\(A%20Record,a%20hostname%20to%20another%20hostname.](https://ns1.com/resources/dns-types-records-servers-andqueries#:~:text=Address%20Mapping%20record%20(A%20Record,a%20hostname%20to%20another%20hostname.)

QUESTION 5

Refer to the exhibit. If R1 receives a packet destined to 172.16.1.1, to which IP address does it send the packet?

```
R1#show ip route
Codes: C - connected, S - static, R - RIP, M - mobile, B - BGP
       D - EIGRP, EX - EIGRP external, O - OSPF, IA - OSPF inter area
       N1 - OSPF NSSA external type 1, N2 - OSPF NSSA external type 2
       E1 - OSPF external type 1, E2 - OSPF external type 2
       i - IS-IS, su - IS-IS summary, L1 - IS-IS level-1, L2 - IS-IS level-2
       ia - IS-IS inter area, * - candidate default, U - per-user static route
       o - ODR, P - periodic downloaded static route

Gateway of last resort is 192.168.14.4 to network 0.0.0.0

C    192.168.12.0/24 is directly connected, FastEthernet0/0
C    192.168.13.0/24 is directly connected, FastEthernet0/1
C    192.168.14.0/24 is directly connected, FastEthernet1/0
     192.168.10.0/24 is variably subnetted, 3 subnets, 3 masks
O     192.168.10.0/24 [110/2] via 192.168.14.4, 00:02:01, FastEthernet1/0
O     192.168.10.32/27 [110/11] via 192.168.13.3, 00:00:52, FastEthernet0/1
O     192.168.0.0/16 [110/2] via 192.168.15.5, 00:05:01, FastEthernet1/1
D     192.168.10.1/32 [90/52778] via 192.168.12.2, 00:03:44, FastEthernet0/0
O*E2 0.0.0.0/0 [110/1] via 192.168.14.4, 00:00:10, FastEthernet1/0
```



A. 192.168.14.4

B. 192.168.12.2

C. 192.168.13.3

D. 192.168.15.5

Correct Answer: A

Route to 172.16.1.1 is not in the routing table so traffic will be sent to the default route (Gateway of last resort)
192.168.14.4

[Latest 200-301 Dumps](#)

[200-301 VCE Dumps](#)

[200-301 Exam Questions](#)