



200-125^{Q&As}

Cisco Certified Network Associate

Pass Cisco 200-125 Exam with 100% Guarantee

Free Download Real Questions & Answers **PDF** and **VCE** file from:

<https://www.pass4itsure.com/200-125.html>

100% Passing Guarantee
100% Money Back Assurance

Following Questions and Answers are all new published by Cisco
Official Exam Center

- ⚙ **Instant Download** After Purchase
- ⚙ **100% Money Back** Guarantee
- ⚙ **365 Days** Free Update
- ⚙ **800,000+** Satisfied Customers





QUESTION 1

Scenario:

You are a junior network engineer for a financial company, and the main office network is experiencing network issues. Troubleshoot the network issues.

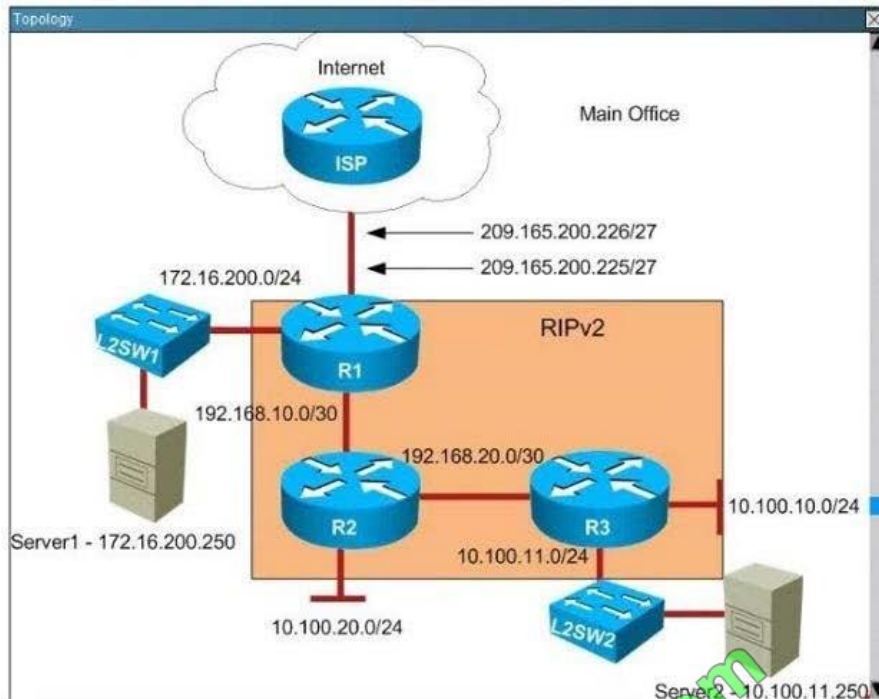
Router R1 connects the main office to the internet, and routers R2 and R3 are internal routers.

NAT is enabled on router R1.

The routing protocol that is enabled between routers R1, R2 and R3 is RIPv2.

R1 sends the default route into RIPv2 for the internal routers to forward internet traffic to R1.

You have console access on R1, R2 and R3 devices. Use only show commands to troubleshoot the issues.



```
R1
Current configuration : 1651 bytes
!
! No configuration change since last restart
version 15.2
service timestamps debug datetime msec
service timestamps log datetime msec
no service password-encryption
!
hostname R1
!
boot-start-marker
boot-end-marker
!
!
!
no aaa new-model
clock timezone PST -8 0
mmi polling-interval 60
no mmi auto-configure
no mmi pvc
mmi snmp-timeout 180
!
!
!
--- More (105) ---
```

```
R1
!
!
!
!
!
ip cef
no ipv6 cef
!
multilink bundle-name authenticated
!
!
!
!
!
!
!
!
!
!
redundancy
!
!
!
!
!
--- More (79) ---
```




```
R3
network 192.168.250.0
no auto-summary
!
ip forward-protocol nd
!
!
no ip http server
no ip http secure-server
!
!
!
control-plane
!
!
!
!
line con 0
logging synchronous
line aux 0
line vty 0 4
--- More (5) ---
```

```
R3
!
no ip http server
no ip http secure-server
!
!
!
control-plane
!
!
!
!
line con 0
logging synchronous
line aux 0
line vty 0 4
login
transport input all
!
!
end
R3#
```

Examine the DHCP configuration between R2 and R3; R2 is configured as the DHCP server and R3 as the client. What is the reason R3 is not receiving the IP address via DHCP?

- A. On R2. The network statement in the DHCP pool configuration is incorrectly configured.
- B. On R3. DHCP is not enabled on the interface that is connected to R2.



C. On R2, the interface that is connected to R3 is in shutdown condition.

D. On R3, the interface that is connected to R2 is in shutdown condition.

Correct Answer: B

Please check the below:

Explanation/show commands:

R2 no mmi pvc mmi snmp-timeout 180 ! ! ip dhcp excluded-address 192.168.20.1 ! ip dhcp pool DHCPASSIGNR3 network 192.168.20.0 255.255.255.252 ! ip cef no ipv6 cef ! multilink bundle-name authenticated !	R3 ! ! interface Loopback0 ip address 192.168.250.3 255.255.255.255 ! interface Ethernet0/0 description ***Link to LAN*** ip address 10.100.10.1 255.255.255.0 interface Ethernet0/1 description ***Link to R2*** no ip address ! interface Ethernet0/2 description ***Link to Server2 Segment*** ip address 10.100.11.1 255.255.255.0 ! interface Ethernet0/3 no ip address
---	--

QUESTION 2

After you configure a DHCP server on VLAN 10 to service clients on VLAN 10 and VLAN 20. clients on VLAN 10 are given IP address assignments, but clients on VLAN 20 fail to receive IP addresses. Which action must you take to correct the problem?

- A. Configure the ip helper address command in the DHCP server configuration.
- B. Configure the DNS name option in the DHCP server configuration
- C. Configure a separate DHCP server on VLAN 20
- D. Configure the default gateway in the DHCP sever configuration

Correct Answer: C

QUESTION 3

What should be part of a comprehensive network security plan?

- A. Allow users to develop their own approach to network security.



- B. Physically secure network equipment from potential access by unauthorized individuals.
- C. Encourage users to use personal information in their passwords to minimize the likelihood of passwords being forgotten.
- D. Delay deployment of software patches and updates until their effect on end-user equipment is well known and widely reported
- E. Minimize network overhead by deactivating automatic antivirus client updates.

Correct Answer: B

Computer systems and networks are vulnerable to physical attack; therefore, procedures should be implemented to ensure that systems and networks are physically secure. Physical access to a system or network provides the opportunity for an intruder to damage, steal, or corrupt computer equipment, software, and information. When computer systems are networked with other departments or agencies for the purpose of sharing information, it is critical that each party to the network take appropriate measures to ensure that its system will not be physically breached, thereby compromising the entire network. Physical security procedures may be the least expensive to implement but can also be the most costly if not implemented. The most expensive and sophisticated computer protection software can be overcome once an intruder obtains physical access to the network.

QUESTION 4

During which phase of PPPoE is PPP authentication performed?

- A. the PPP Session phase
- B. Phase 2
- C. the Active Discovery phase
- D. the Authentication phase
- E. Phase 1

Correct Answer: A

QUESTION 5

Refer to the exhibit.



```
Switch# show spanning-tree vlan 1
VLAN0001
  Spanning tree enabled protocol rstp
  Root ID    Priority    20481
             Address     0008.217a.5800
             Cost        38
             Port        1 (FastEthernet0/1)
             Hello Time  2 sec  Max Age 20 sec  Forward Delay 15 sec

  Bridge ID  Priority    32769 (priority 32768 sys-id-ext 1)
             Address     0008.205e.6600
             Hello Time  2 sec  Max Age 20 sec  Forward Delay 15 sec
             Aging Time  300

Interface Role Sts Cost Prio.Nbr Type
-----
Fa0/1     Root FWD 19    128.1 P2p
Fa0/4     Desg FWD 38    128.1 P2p
Fa0/11    Altn BLK 57    128.1 P2p
Fa0/13    Desg FWD 38    128.1 P2p
```

Why has this switch not been elected the root bridge for VLAN1?

- A. It has more than one interface that is connected to the root network segment.
- B. It is running RSTP while the elected root bridge is running 802.1d spanning tree.
- C. It has a higher MAC address than the elected root bridge.
- D. It has a higher bridge ID than the elected root bridge.

Correct Answer: D

The root bridge is determined by the lowest bridge ID, and this switch has a bridge ID priority of 32768, which is higher than the roots priority of 20481.

[200-125 VCE Dumps](#)

[200-125 Study Guide](#)

[200-125 Braindumps](#)



To Read the [Whole Q&As](#), please purchase the [Complete Version](#) from [Our website](#).

Try our product !

100% Guaranteed Success

100% Money Back Guarantee

365 Days Free Update

Instant Download After Purchase

24x7 Customer Support

Average 99.9% Success Rate

More than 800,000 Satisfied Customers Worldwide

Multi-Platform capabilities - [Windows](#), [Mac](#), [Android](#), [iPhone](#), [iPod](#), [iPad](#), [Kindle](#)

We provide exam PDF and VCE of Cisco, Microsoft, IBM, CompTIA, Oracle and other IT Certifications. You can view Vendor list of All Certification Exams offered:

<https://www.pass4itsure.com/allproducts>

Need Help

Please provide as much detail as possible so we can best assist you.

To update a previously submitted ticket:



 One Year Free Update <p>Free update is available within One Year after your purchase. After One Year, you will get 50% discounts for updating. And we are proud to boast a 24/7 efficient Customer Support system via Email.</p>	 Money Back Guarantee <p>To ensure that you are spending on quality products, we provide 100% money back guarantee for 30 days from the date of purchase.</p>	 Security & Privacy <p>We respect customer privacy. We use McAfee's security service to provide you with utmost security for your personal information & peace of mind.</p>
---	---	--

Any charges made through this site will appear as Global Simulators Limited.

All trademarks are the property of their respective owners.

Copyright © pass4itsure, All Rights Reserved.