



# 200-120<sup>Q&As</sup>

Cisco Certified Network Associate Exam

## Pass Cisco 200-120 Exam with 100% Guarantee

Free Download Real Questions & Answers **PDF** and **VCE** file from:

<https://www.pass4itsure.com/200-120.html>

100% Passing Guarantee  
100% Money Back Assurance

Following Questions and Answers are all new published by Cisco  
Official Exam Center

- ⚙ **Instant Download** After Purchase
- ⚙ **100% Money Back** Guarantee
- ⚙ **365 Days** Free Update
- ⚙ **800,000+** Satisfied Customers



**QUESTION 1**

Which two tasks does the Dynamic Host Configuration Protocol perform? (Choose two.)

- A. Set the IP gateway to be used by the network.
- B. Perform host discovery used DHCPDISCOVER message.
- C. Configure IP address parameters from DHCP server to a host.
- D. Provide an easy management of layer 3 devices.
- E. Monitor IP performance using the DHCP server.
- F. Assign and renew IP address from the default pool.

Correct Answer: CF

The Dynamic Host Configuration Protocol (DHCP) is a network protocol used to configure devices that are connected to a network (known as hosts) so they can communicate on that network using the Internet Protocol (IP). It involves clients and a server operating in a client-server model. DHCP servers assigns IP addresses from a pool of addresses and also assigns other parameters such as DNS and default gateways to hosts.

**QUESTION 2**

Refer to the exhibit.

City#show ip interface brief					
Interface	IP-Address	OK?	Method	Status	Protocol
FastEthernet0/0	192.168.12.48	YES	manual	up	up
FastEthernet0/1	192.168.12.65	YES	manual	up	up
Serial0/0	192.168.12.121	YES	manual	up	up
Serial0/1	unassigned	YES	unset	up	up
Serial0/1.102	192.168.12.125	YES	manual	up	up
Serial0/1.103	192.168.12.129	YES	manual	up	up
Serial0/1.104	192.168.12.133	YES	manual	up	up
City#					

A network associate has configured OSPF with the command:

```
City(config-router)# network 192.168.12.64 0.0.0.63 area 0
```

After completing the configuration, the associate discovers that not all the interfaces are participating in OSPF. Which three of the interfaces shown in the exhibit will participate in OSPF according to this configuration statement? (Choose three.)

- A. FastEthernet0 /0



- B. FastEthernet0 /1
- C. Serial0/0
- D. Serial0/1.102
- E. Serial0/1.103
- F. Serial0/1.104

Correct Answer: BCD

The "network 192.168.12.64 0.0.0.63 equals to network 192.168.12.64/26. This network has:

+

Increment: 64 (/26= 1111 1111.1111 1111.1111 1111.1100 0000)

+

Network address: 192.168.12.64

+

Broadcast address: 192.168.12.127

Therefore all interfaces in the range of this network will join OSPF.

---

### QUESTION 3

What are three approaches that are used when migrating from an IPv4 addressing scheme to an IPv6 scheme. (Choose three.)

- A. enable dual-stack routing
- B. configure IPv6 directly
- C. configure IPv4 tunnels between IPv6 islands
- D. use proxying and translation to translate IPv6 packets into IPv4 packets
- E. statically map IPv4 addresses to IPv6 addresses
- F. use DHCPv6 to map IPv4 addresses to IPv6 addresses

Correct Answer: ACD

Several methods are used terms of migration including tunneling, translators, and dual stack. Tunnels are used to carry one protocol inside another, while translators simply translate IPv6 packets into IPv4 packets. Dual stack uses a combination of both native IPv4 and IPv6. With dual stack, devices are able to run IPv4 and IPv6 together and if IPv6 communication is possible that is the preferred protocol. Hosts can simultaneously reach IPv4 and IPv6 content.

---

### QUESTION 4



The network administrator is asked to configure 113 point-to-point links. Which IP addressing scheme defines the address range and subnet mask that meet the requirement and waste the fewest subnet and host addresses?

- A. 10.10.0.0/16 subnetted with mask 255.255.255.252
- B. 10.10.0.0/18 subnetted with mask 255.255.255.252
- C. 10.10.1.0/24 subnetted with mask 255.255.255.252
- D. 10.10.0.0/23 subnetted with mask 255.255.255.252
- E. 10.10.1.0/25 subnetted with mask 255.255.255.252

Correct Answer: D

We need 113 point-to-point links which equal to 113 sub-networks

The network used for point-to-point connection should be /30.

So our initial network should be  $30 \times 7 = 210$ .

So 10.10.0.0/23 is the correct answer.

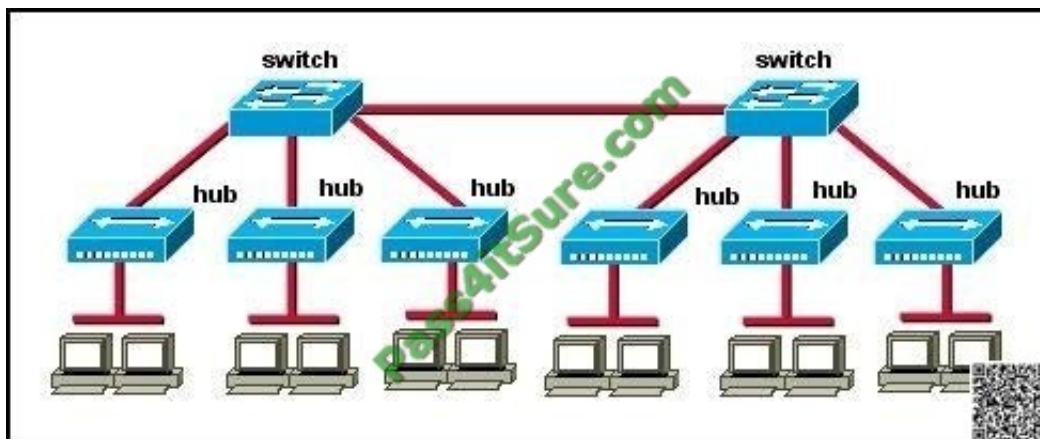
You can understand it more clearly when writing it in binary form:

/23 = 1111 1111.1111 1110.0000 0000

/30 = 1111 1111.1111 1111.1111 1100 (borrow 7 bits)

## QUESTION 5

Refer to Exhibit:



How many broadcast domains are shown in the graphic assuming only the default VLAN is configured on the switches?

- A. one
- B. two
- C. six



D. twelve

Correct Answer: A

Only router can break up broadcast domains but in this exhibit no router is used so there is only 1 broadcast domain.

For your information, there are 7 collision domains in this exhibit (6 collision domains between hubs and switches + 1 collision between the two switches).

[Latest 200-120 Dumps](#)

[200-120 Practice Test](#)

[200-120 Exam Questions](#)



To Read the [Whole Q&As](#), please purchase the [Complete Version](#) from [Our website](#).

## Try our product !

100% Guaranteed Success

100% Money Back Guarantee

365 Days Free Update

Instant Download After Purchase

24x7 Customer Support

Average 99.9% Success Rate

More than 800,000 Satisfied Customers Worldwide

Multi-Platform capabilities - [Windows](#), [Mac](#), [Android](#), [iPhone](#), [iPod](#), [iPad](#), [Kindle](#)

We provide exam PDF and VCE of Cisco, Microsoft, IBM, CompTIA, Oracle and other IT Certifications. You can view Vendor list of All Certification Exams offered:

<https://www.pass4itsure.com/allproducts>

## Need Help

Please provide as much detail as possible so we can best assist you.

To update a previously submitted ticket:



 <b>One Year Free Update</b> Free update is available within One Year after your purchase. After One Year, you will get 50% discounts for updating. And we are proud to boast a 24/7 efficient Customer Support system via Email.	 <b>Money Back Guarantee</b> To ensure that you are spending on quality products, we provide 100% money back guarantee for 30 days from the date of purchase.	 <b>Security &amp; Privacy</b> We respect customer privacy. We use McAfee's security service to provide you with utmost security for your personal information & peace of mind.
---	---	--

Any charges made through this site will appear as Global Simulators Limited.

All trademarks are the property of their respective owners.

Copyright © pass4itsure, All Rights Reserved.