



# 1Z0-591<sup>Q&As</sup>

Oracle Business Intelligence Foundation Suite 11g Essentials

## Pass Oracle 1Z0-591 Exam with 100% Guarantee

Free Download Real Questions & Answers **PDF** and **VCE** file from:

<https://www.pass4itsure.com/1z0-591.html>

100% Passing Guarantee  
100% Money Back Assurance

Following Questions and Answers are all new published by Oracle  
Official Exam Center

- ⚙️ **Instant Download** After Purchase
- ⚙️ **100% Money Back** Guarantee
- ⚙️ **365 Days** Free Update
- ⚙️ **800,000+** Satisfied Customers





### QUESTION 1

Query limits tab can be accessed through\_\_\_\_\_.

- A. Security Manager, Query tab, Application role dialog box, Permissions
- B. Security Manager, Application Roles tab, Query dialog box, Permissions
- C. Security Manager, Application Roles tab, Application role dialog box, Permissions
- D. Security Manager, Application Roles tab, Application role dialog box, Query Properties

Correct Answer: C

Explanation: Query environment can be managed by setting query limits (governors) in the Repository (RPD) for particular Application Roles. You should always set query limits for particular application roles rather than for individual users. Steps:

1.

Login to Repository using OBIEE Admin Tool

2.

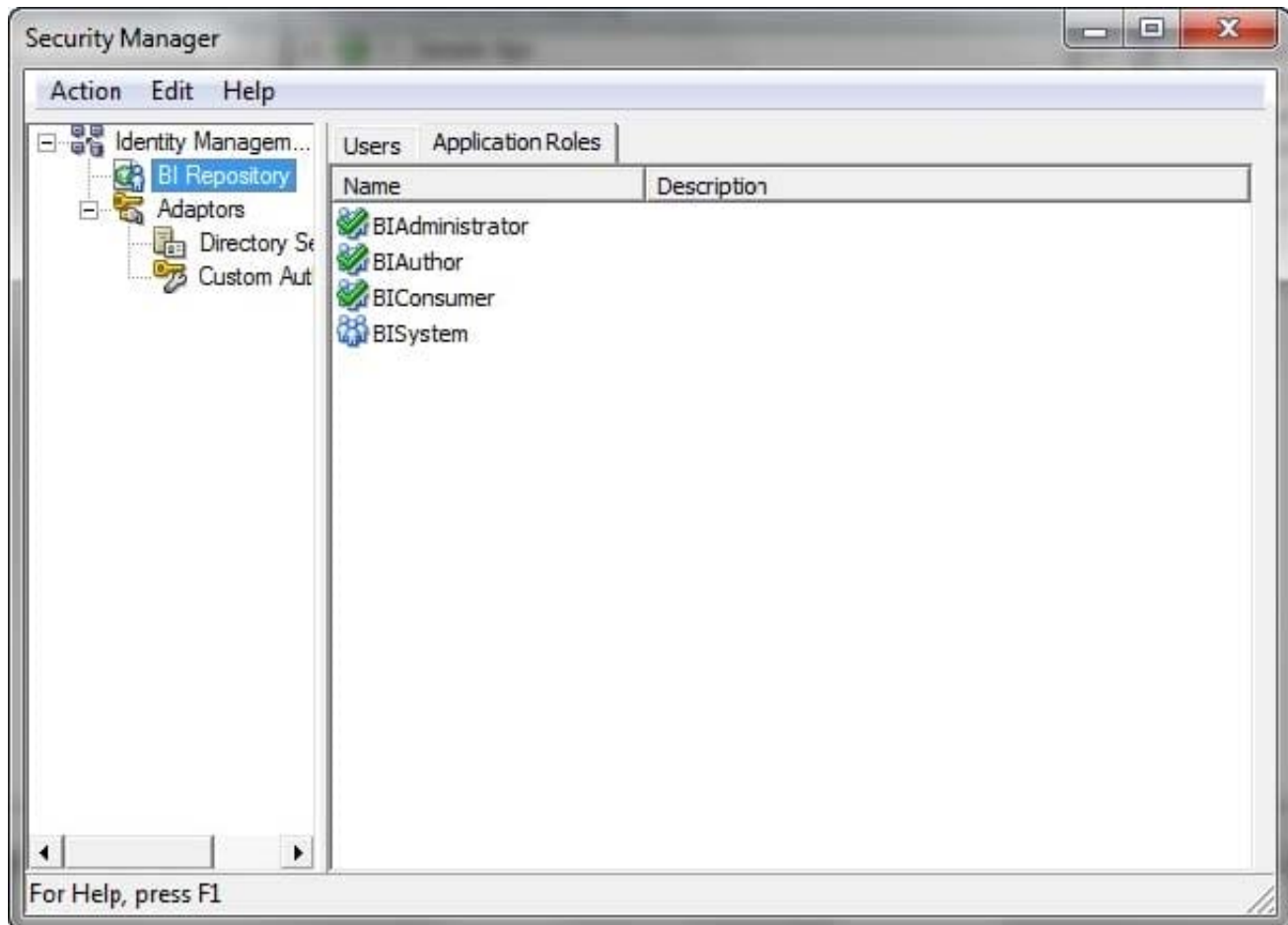
Navigate to Manage > Identity

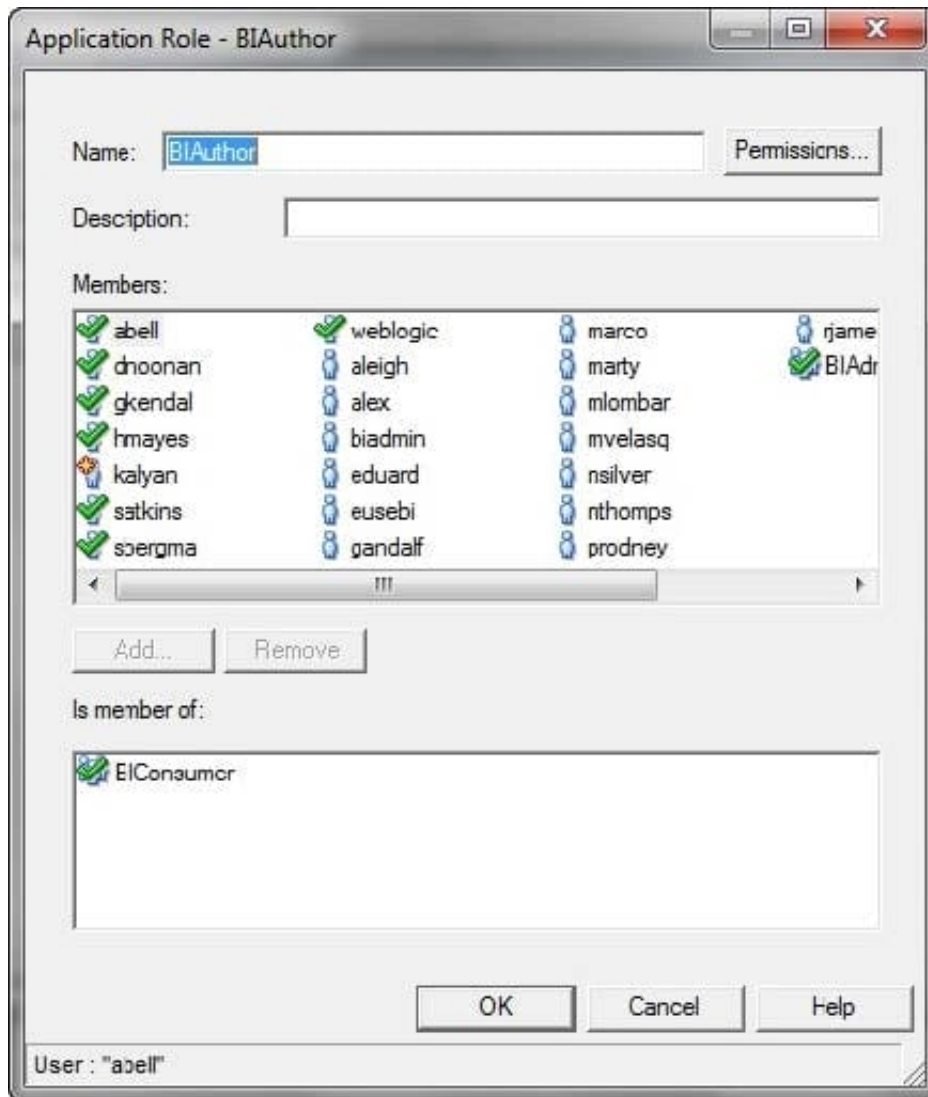
3.

Go to Application Role tab, choose the role and double click on it to open.

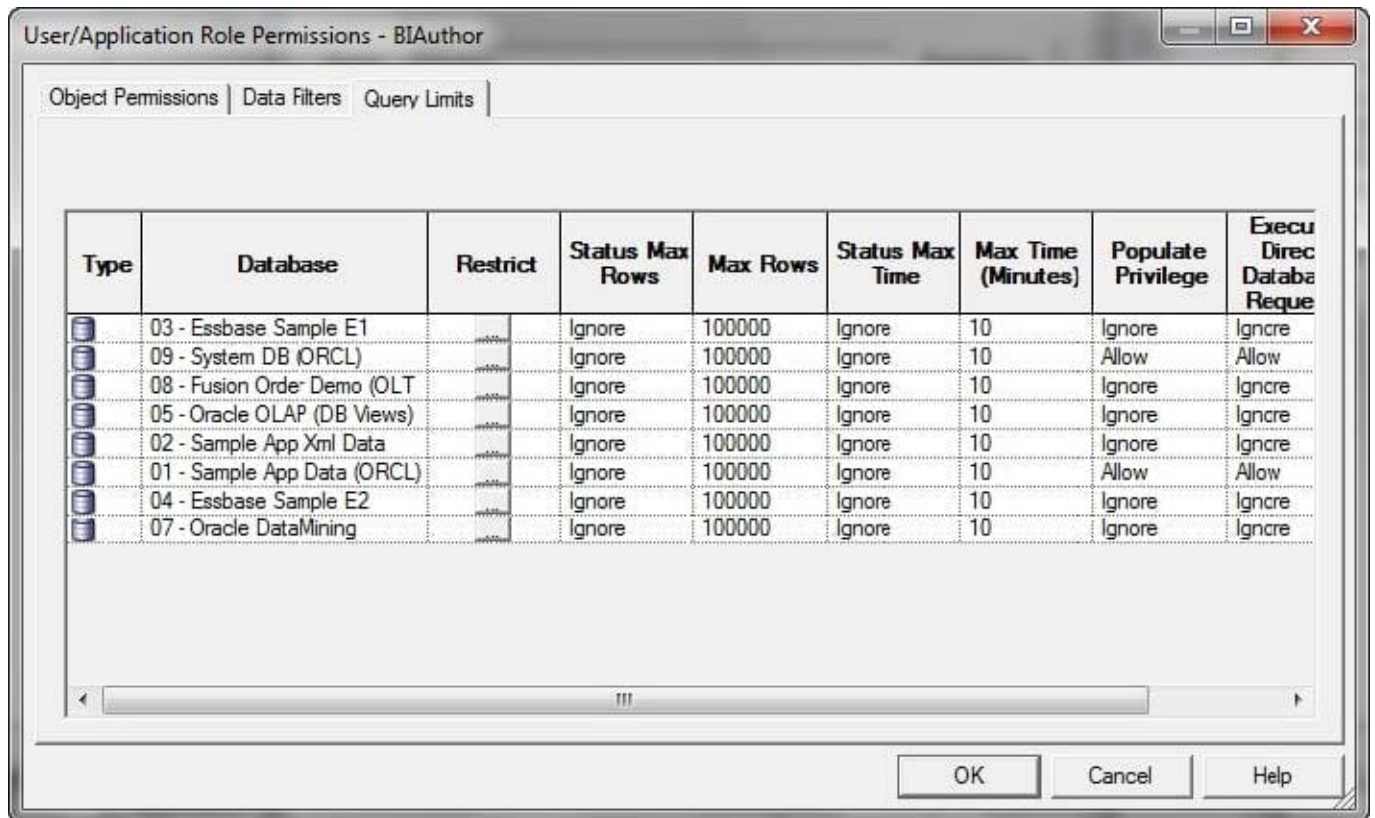
4.

Click on Permissions tab





5. Set the Query Limits. You can limit queries by the number of rows received, by maximum run time, and by restricting to particular time periods. You can also allow or disallow direct database requests or the Populate privilege.



## QUESTION 2

You do not have a physical time table in your database but would like to use the time series functions that OBIEE offers. What two options do you have?

- A. Create a physical time table in your database.
- B. Create a Logical Table that is sourced from the time key in the fact table.
- C. Create an "Opaque View" in the physical layer that contains the time columns from the fact and map it into your physical model.
- D. Create a Logical Table that is sourced from a time field in one of your dimension tables.
- E. Create a time table that is joined through a intervening Table so there is no foreign key relationship.

Correct Answer: AD

Explanation: Modeling Time Series Function in OBIEE Modeling Time Series Data

Time series functions provide the ability to compare business performance with previous time periods, allowing you to analyze data that spans multiple time periods. For example, time series functions enable comparisons between current sales and sales a year ago, a month ago, and so on.

Because SQL does not provide a direct way to make time comparisons, you must model time series data in the Oracle BI repository. First, set up time dimensions based on the period table in your data warehouse. Then, you can define measures that take advantage of this time dimension to use the AGO, TODATE, and PERIODROLLING functions.

**QUESTION 3**

Which option is used to enter the rank function when creating a new rank measure?

- A. Initialization Block
- B. Expression Builder
- C. Connection Pool
- D. Web Catalog

Correct Answer: B

Example (see step 4 and 5 below): Getting Top-N Sales Reps for Year and Year-1

1.

Under the "Business Model and Mapping" Layer, right click the "F1 Revenue" and select "New Object" -> "Logical Column..."

2.

In the "Logical Column" Window give for Name: Year Ago Revenue as seen below:

3.

Goto the "Column Source" Tab and select "Derived from existing columns using an expression" radio button then click on the "Edit Expression" icon.

4.

Enter the following expression in the "Expression Builder" Window by selecting "Functions" in the "Category:" list, "Time Series Functions" in the "Functions:" list then "Ago" "Time Series Functions:" section.

5.

Select the "" in the "Ago( )" function, then select "Logical Tables" in the "Category:" list, "F1 Revenue" in the "Logical Tables:" list, then double click the "Revenue" in the "Columns:" list. Etc.



Logical Column - Year Ago Revenue

General | Column Source | Aggregation | Levels

Name: Year Ago Revenue (UNKNOWN)

Belongs to Table: "Sample Sales"."F1 Revenue" ☐ Writeable

Sort order column:  
None Set... Clear

Descriptor ID column:  
None Set... Clear

Description:

OK Cancel Help

**QUESTION 4**

When creating a query. Subject areas can be combined via point and click as long as\_\_\_\_\_.

- A. the subject areas share objects of the same name
- B. the subject areas both share the same model in the business model and mapping layer
- C. the subject areas are both from the same physical source, though they may be in separate business layers
- D. two or more subject areas cannot be joined together without manually mapping the contents

Correct Answer: B

Explanation: Users in Oracle BI Answers can create queries that span multiple subject areas, as long as the subject areas correspond to the same business model.



### QUESTION 5

A customer wants to analyze the efficiency of his/her order fulfillment process. If the customer has a dimensional model, which option is the fact table?

- A. Stores
- B. Orders
- C. Products
- D. Time

Correct Answer: B

[1Z0-591 PDF Dumps](#)

[1Z0-591 Practice Test](#)

[1Z0-591 Braindumps](#)