



# 1Z0-441<sup>Q&As</sup>

Oracle Mobile Development 2015 Essentials

## Pass Oracle 1Z0-441 Exam with 100% Guarantee

Free Download Real Questions & Answers **PDF** and **VCE** file from:

<https://www.pass4itsure.com/1z0-441.html>

100% Passing Guarantee  
100% Money Back Assurance

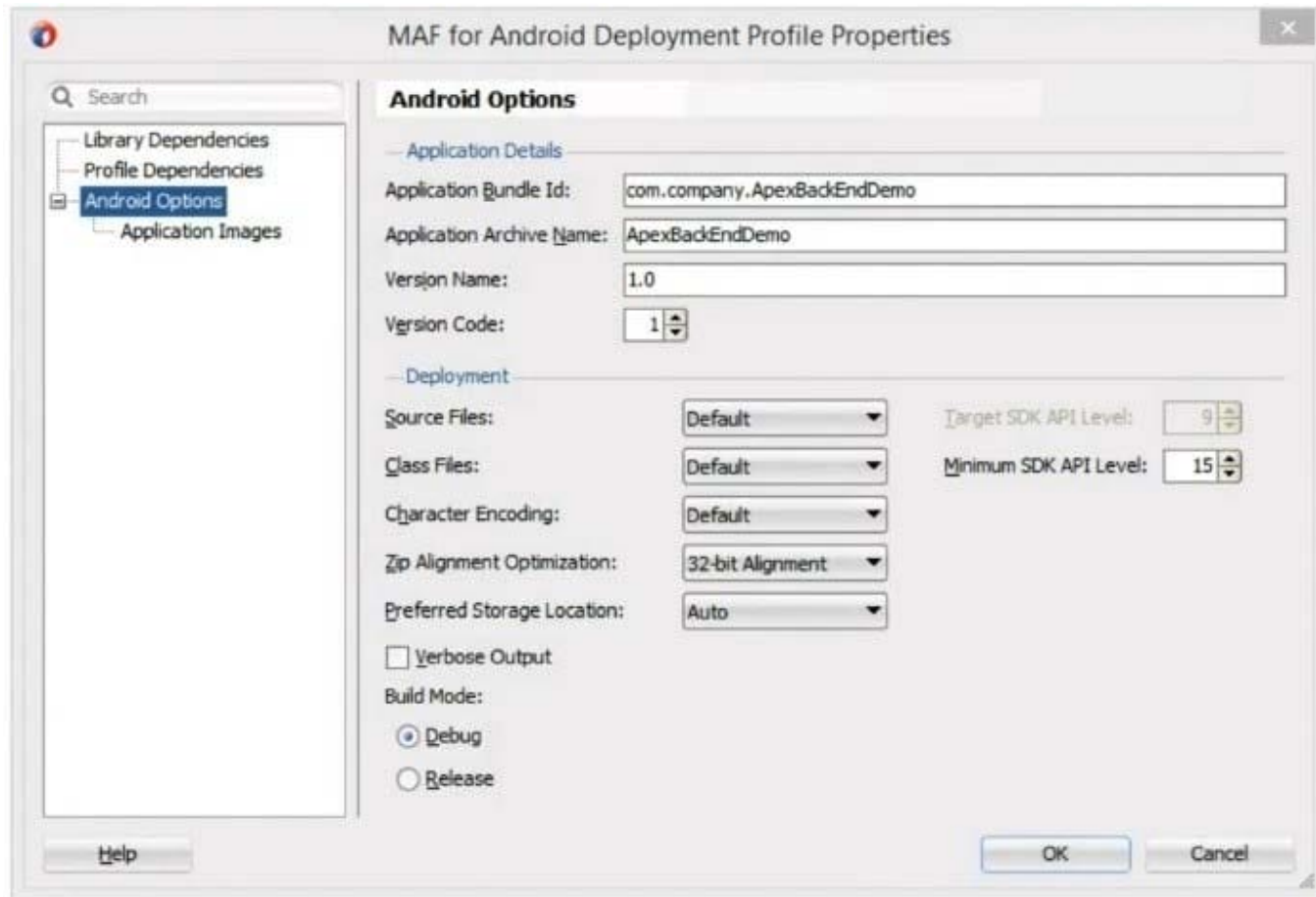
Following Questions and Answers are all new published by Oracle  
Official Exam Center

- ⚙️ **Instant Download** After Purchase
- ⚙️ **100% Money Back** Guarantee
- ⚙️ **365 Days** Free Update
- ⚙️ **800,000+** Satisfied Customers



**QUESTION 1**

View the Exhibit.



The application accesses secured web services over HTTPS. The certificates have been issued by the internal certificate authority of your organization. In addition, the application requires access to the SMS and camera features of the device.

Which are the three actions you must perform to prepare the application for distribution on the Google Play Store?

- A. In the deployment profile, specify a unique, Java language-like package name identifying the application as the ApplicationBundle ID.
- B. Obtain or generate a private key to sign the application package (.apk file) and update the preferences of your IDE to use it.
- C. Validate your archive name by using the registry available on the Oracle Technology Network.
- D. Registryour application on the Oracle Mobile Cloud Service.
- E. In the deployment profile, set the build mode to Release.
- F. Remove any certificates emitted by your organization from the cacerts file.

Correct Answer: ADE



## QUESTION 2

Identify three features of Oracle Mobile Security Suite.

- A. It creates a separate container for corporate applications on a mobile device.
- B. It modifies service endpoints to allow for changing authentication protocols.
- C. It wipes data from a lost or stolen device.
- D. It allows single sign-on among different applications.
- E. It integrates heterogeneous services across a network.

Correct Answer: BCD

<http://www.oracle.com/technetwork/middleware/id-mgmt/overview/omss-technical-wp-2104766.pdf>

---

## QUESTION 3

After importing a Feature Archive into an application, what else must you do to include its features into your application?

- A. Create a new deployment profile.
- B. Add a login URL.
- C. Add a task flow.
- D. Add one or more feature references.

Correct Answer: D

<https://docs.oracle.com/middleware/maf210/mobile/develop-maf/maf-apps-get-started.htm#ADFMF22>

---

## QUESTION 4

Which two approaches are encompassed by service mediation?

- A. loosely coupling service consumers with enterprise systems
- B. the ability to provide additional information by aggregating data from multiple enterprise systems
- C. rapid prototyping of service interfaces
- D. rapid deployment of services into the cloud

Correct Answer: BC

---



### QUESTION 5

Which three technologies does Oracle Mobile Suite use for data shaping?

- A. XQuery
- B. XSLT
- C. MFL
- D. MAF
- E. JavaScript Schema

Correct Answer: ABC

[1Z0-441 Practice Test](#)

[1Z0-441 Study Guide](#)

[1Z0-441 Braindumps](#)