



# 1Z0-141<sup>Q&As</sup>

Oracle9i forma Developer:build internet applications

## Pass Oracle 1Z0-141 Exam with 100% Guarantee

Free Download Real Questions & Answers **PDF** and **VCE** file from:

<https://www.pass4itsure.com/1Z0-141.html>

100% Passing Guarantee  
100% Money Back Assurance

Following Questions and Answers are all new published by Oracle  
Official Exam Center

-  **Instant Download** After Purchase
-  **100% Money Back** Guarantee
-  **365 Days** Free Update
-  **800,000+** Satisfied Customers





### QUESTION 1

You have the Orders form open in Forms Builder. You create an object group in the Orders form and you try to drag various components in the Object Navigator to the object group. Which two components will you be unable to place in the object group? (Choose two.)

- A. the Orders block of the Orders form
- B. the Order\_CV canvas of the Orders form
- C. the When-New-Item-Instance trigger of the Order\_Items.Quantity item in the Orders form
- D. the When-New-Form-Instance trigger of the Orders form
- E. the Product\_Id item in the Order\_Items block of the Orders form

Correct Answer: CE

---

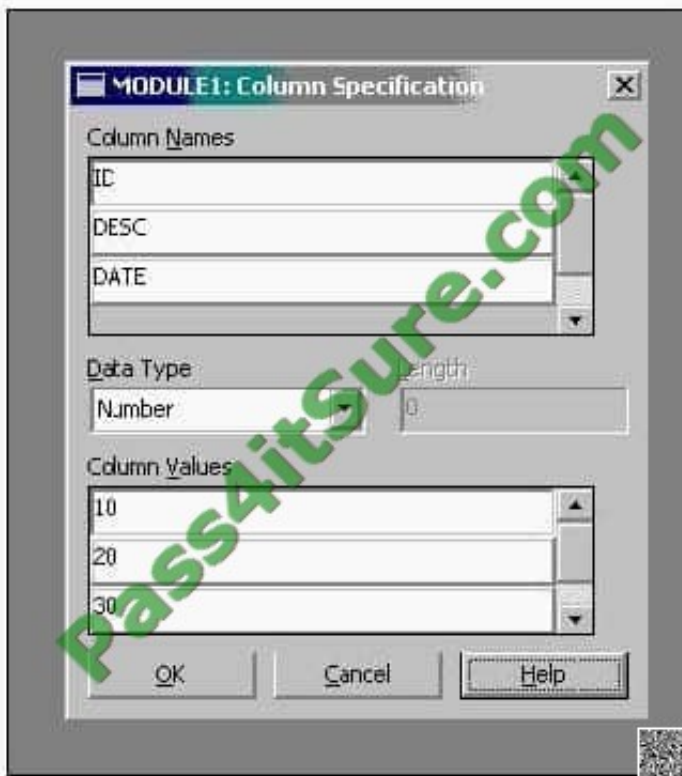
### QUESTION 2

You created a LOV based upon a three-column Record Group called CUST, which was created at design time.

View the Exhibit and examine the structure of the CUST Record Group.

At run time, the user sometimes requires the LOV to be populated from the PROD Record Group.

Which two built-ins will enable you to create the PROD Record Group and repopulate the LOV? (Choose two.)



- A. RETRIEVE\_LIST(lov\_id, \\'PROD\\');
- B. POPULATE\_LIST(lov\_id, \\'PROD\\');
- C. SET\_LOV\_PROPERTY(lov\_id, GROUP\_NAME, \\'PROD\\');
- D. CREATE\_GROUP\_FROM\_QUERY (\\'PROD\\, \\'SELECT P\_id, \\|\\|\\' date\_sold as Date, Name as Desc \\|\\|\\' from products \\' );
- E. CREATE\_GROUP\_FROM\_QUERY (\\'PROD\\, \\'SELECT P\_id as ID, \\|\\|\\' Name as Desc, date\_sold as Date \\|\\|\\' from products \\' );
- F. CREATE\_GROUP\_FROM\_QUERY (\\'PROD\\, \\'SELECT rownum as Index, P\_id as ID, \\|\\|\\' Name as Desc, date\_sold as Date \\|\\|\\' from products \\' );

Correct Answer: CE

### QUESTION 3

You created a query Record Group at design time.

Which built-in can you use to execute the query defined in the Record Group object?

- A. ADD\_GROUP\_ROW
- B. POPULATE\_GROUP



- C. ADD\_GROUP\_COLUMN
- D. SET\_GROUP\_SELECTION
- E. CREATE\_GROUP\_FROM\_QUERY
- F. POPULATE \_GROUP\_WITH\_QUERY

Correct Answer: B

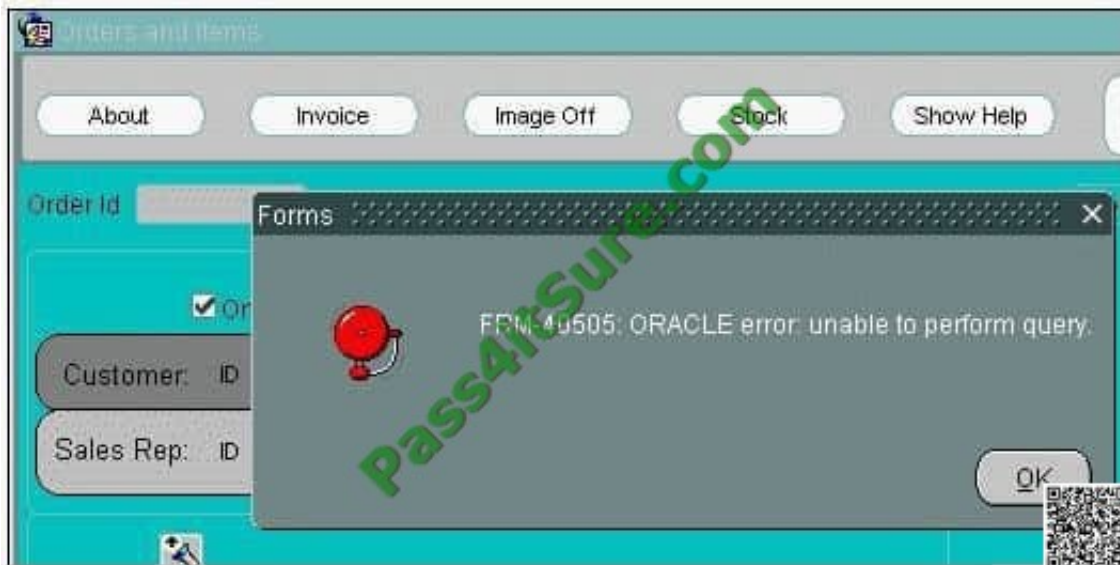
#### QUESTION 4

View the Exhibit.

You are developing an Order Entry form. The When-New-Form-Instance trigger executes a query on the only block in the form. Instead of the alert shown in the exhibit, when the query cannot be performed you want to display to the user a

message with the actual database error that is received.

What can you do to implement this?



- A. In the When-New-Form-Instance trigger, insert this code after the EXECUTE\_QUERY built-in:IF NOT FORM\_SUCCESS THENmessage(DBMS\_ERROR\_TEXT);END IF;
- B. In the When-New-Form-Instance trigger, insert this code after the EXECUTE\_QUERY built-in:IF NOT FORM\_SUCCESS THENmessage(SQLERRM);END IF;
- C. Place this code in a form-level On-Error trigger:IF ERROR\_CODE = 40505 THENmessage (DBMS\_ERROR\_TEXT);END IF;
- D. Place this code in a form-level On-Error trigger:IF ERROR\_CODE = 40505 THENmessage (SQLERRM);END IF;
- E. Add this exception handler to the When-New-Form-Instance trigger:EXCEPTIONWHEN ERROR\_CODE = 40505



```
THENMESSAGE(DBMS_ERROR_TEXT);
```

F. Add this exception handler to the When-New-Form-Instance trigger:EXCEPTIONWHEN ERROR\_CODE = 40505  
THENMESSAGE(SQLERRM);

Correct Answer: C

---

### QUESTION 5

While using the LOV Wizard to create the LOV called SALES\_REP\_LOV, which is based on the SALES\_REP\_RG record group, you assign it to the Sales\_Rep\_Name item in the form that you are developing.

After the LOV is created, you realize that you should have assigned the LOV to the Sales\_Rep\_Id item instead.

What can you do to make this change?

- A. Change the Column Mapping properties of the SALES\_REP\_LOV list of values to return the value to SALES\_REP\_ID rather than to SALES\_REP\_NAME.
- B. Delete the value in the List of Values property for the Sales\_Rep\_Name item and set the List of Values property of the Sales\_Rep\_Id item to SALES\_REP\_LOV.
- C. Change the Record Group Query property of the SALES\_REP\_RG record group to select into the Sales\_Rep\_Id item instead of into the Sales\_Rep\_Name item.
- D. Delete the SALES\_REP\_LOV list of values and create it again, because once the LOV is created, you cannot modify the item to which it is assigned.

Correct Answer: B

[Latest 1Z0-141 Dumps](#)

[1Z0-141 VCE Dumps](#)

[1Z0-141 Braindumps](#)



To Read the [Whole Q&As](#), please purchase the [Complete Version](#) from [Our website](#).

## Try our product !

100% Guaranteed Success

100% Money Back Guarantee

365 Days Free Update

Instant Download After Purchase

24x7 Customer Support

Average 99.9% Success Rate

More than 800,000 Satisfied Customers Worldwide

Multi-Platform capabilities - [Windows](#), [Mac](#), [Android](#), [iPhone](#), [iPod](#), [iPad](#), [Kindle](#)

We provide exam PDF and VCE of Cisco, Microsoft, IBM, CompTIA, Oracle and other IT Certifications. You can view Vendor list of All Certification Exams offered:

<https://www.pass4itsure.com/allproducts>

## Need Help

Please provide as much detail as possible so we can best assist you.

To update a previously submitted ticket:



 <p><b>One Year Free Update</b> Free update is available within One Year after your purchase. After One Year, you will get 50% discounts for updating. And we are proud to boast a 24/7 efficient Customer Support system via Email.</p>	 <p><b>Money Back Guarantee</b> To ensure that you are spending on quality products, we provide 100% money back guarantee for 30 days from the date of purchase.</p>	 <p><b>Security &amp; Privacy</b> We respect customer privacy. We use McAfee's security service to provide you with utmost security for your personal information &amp; peace of mind.</p>
---	---	--

Any charges made through this site will appear as Global Simulators Limited.

All trademarks are the property of their respective owners.

Copyright © pass4itsure, All Rights Reserved.