



1Z0-047^{Q&As}

Oracle Database SQL Expert

Pass Oracle 1Z0-047 Exam with 100% Guarantee

Free Download Real Questions & Answers **PDF** and **VCE** file from:

<https://www.pass4itsure.com/1Z0-047.html>

100% Passing Guarantee
100% Money Back Assurance

Following Questions and Answers are all new published by Oracle
Official Exam Center

- ⚙ **Instant Download** After Purchase
- ⚙ **100% Money Back** Guarantee
- ⚙ **365 Days** Free Update
- ⚙ **800,000+** Satisfied Customers



**QUESTION 1**

Evaluate the following SELECT statement and view the Exhibit to examine its output:

```
SELECT constraint_name, constraint_type, search_condition, r_constraint_name, delete_rule, status FROM  
user_constraints WHERE table_name = ORDERS
```

Which two statements are true about the output? (Choose two.)

| CONSTRAINT_NAME | CON | SEARCH_CONDITION | R_CONSTRAINT_NAME | DELETE_RULE | STATUS |
|----------------------|-----|------------------------------------|-------------------|-------------|---------|
| ORDER_DATE_NN | C | "ORDER_DATE" IS NOT NULL | | | ENABLED |
| ORDER_CUSTOMER_ID_NN | C | "CUSTOMER_ID" IS NOT NULL | | | ENABLED |
| ORDER_MODE_LOV | C | order_mode in ('direct', 'online') | | | ENABLED |
| ORDER_TOTAL-MIN | C | order_total >= 0 | | | ENABLED |
| ORDER_PK | P | | | | ENABLED |
| ORDERS-CUSTOMER-ID | R | | CUSTOMERS ID | SET NULL | ENABLED |
| ORDERS-SALES-REP | R | | EMP EMP ID | SET NULL | ENABLED |

- A. In the second column, indicates a check constraint.
- B. The STATUS column indicates whether the table is currently in use.
- C. The R_CONSTRAINT_NAME column gives the alternative name for the constraint.
- D. The column DELETE_RULE decides the state of the related rows in the child table when the corresponding row is deleted from the parent table.

Correct Answer: AD

QUESTION 2

Given below are the SQL statements executed in a user session:

```
CREATE TABLE product
```

```
(pcode NUMBER(2),
```

```
pname VARCHAR2(10));
```

```
INSERT INTO product VALUES(1, 'pen\');
```

```
INSERT INTO product VALUES (2, '\penci\');
```

```
SAVEPOINT a;
```

```
UPDATE product SET pcode = 10 WHERE pcode = 1;
```

```
SAVEPOINT b;
```



DELETE FROM product WHERE pcode = 2;

COMMIT;

DELETE FROM product WHERE pcode=10;

ROLLBACK TO SAVEPOINT a;

Which statement describes the consequences?

- A. No SQL statement would be rolled back.
- B. Both the DELETE statements would be rolled back.
- C. Only the second DELETE statement would be rolled back.
- D. Both the DELETE statements and the UPDATE statement would be rolled back.

Correct Answer: A

QUESTION 3

View the Exhibit and examine the description of EMPLOYEES and DEPARTMENTS tables. You want to display the EMPLOYEE_ID, LAST_NAME, and SALARY for the employees who get the maximum salary in their respective

departments. The following SQL statement was written:

WITH

SELECT employee_id, last_name, salary

FROM employees

WHERE (department_id, salary) = ANY (SELECT*

FROM dept_max)

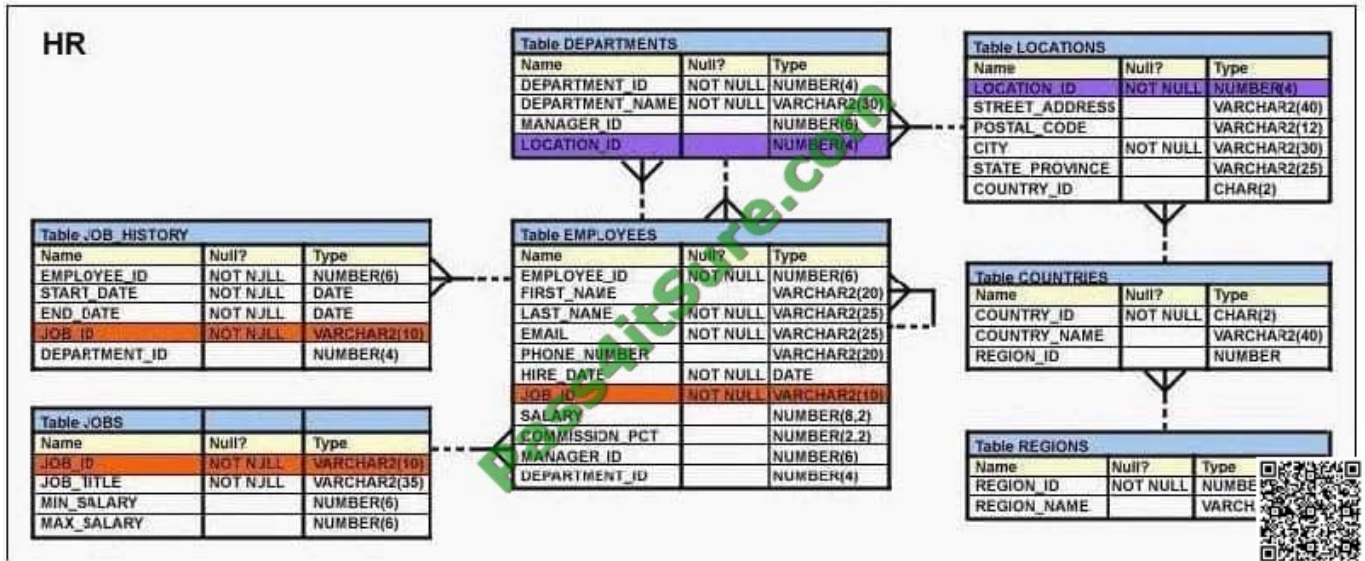
dept_max as (SELECT d.department_id, max(salary)

FROM departments d JOIN employees j

ON (d. department_id = j. department_id)

GROUP BY d. department_id);

Which statement is true regarding the execution and the output of this statement?



- A. The statement would execute and give the desired results.
- B. The statement would not execute because the = ANY comparison operator is used instead of=.
- C. The statement would not execute because the main query block uses the query name before it is even created.
- D. The statement would not execute because the comma is missing between the main query block and the query name.

Correct Answer: C

QUESTION 4

Which two statements are true regarding the execution of the correlated subqueries? (Choose two.)

- A. The nested query executes after the outer query returns the row.
- B. The nested query executes first and then the outer query executes.
- C. The outer query executes only once for the result returned by the inner query.
- D. Each row returned by the outer query is evaluated for the results returned by the inner query.

Correct Answer: AD

QUESTION 5

Evaluate the following SQL statement:

```
ALTER TABLE hr.emp SET UNUSED (mgr_id);
```

Which statement is true regarding the effect of the above SQL statement?

- A. Any synonym existing on the EMP table would have to be re-created.



- B. Any constraints defined on the MGR_ID column would be removed by the above command.
- C. Any views created on the EMP table that include the MGR_ID column would have to be dropped and re-created.
- D. Any index created on the MGR_ID column would continue to exist until the DROP UNUSED COLUMNS command is executed.

Correct Answer: B

[Latest 1Z0-047 Dumps](#)

[1Z0-047 VCE Dumps](#)

[1Z0-047 Study Guide](#)



To Read the [Whole Q&As](#), please purchase the [Complete Version](#) from [Our website](#).

Try our product !

100% Guaranteed Success

100% Money Back Guarantee

365 Days Free Update

Instant Download After Purchase

24x7 Customer Support

Average 99.9% Success Rate

More than 800,000 Satisfied Customers Worldwide

Multi-Platform capabilities - [Windows](#), [Mac](#), [Android](#), [iPhone](#), [iPod](#), [iPad](#), [Kindle](#)

We provide exam PDF and VCE of Cisco, Microsoft, IBM, CompTIA, Oracle and other IT Certifications. You can view Vendor list of All Certification Exams offered:

<https://www.pass4itsure.com/allproducts>

Need Help

Please provide as much detail as possible so we can best assist you.

To update a previously submitted ticket:



| | | |
|---|---|--|
|  One Year Free Update <p>Free update is available within One Year after your purchase. After One Year, you will get 50% discounts for updating. And we are proud to boast a 24/7 efficient Customer Support system via Email.</p> |  Money Back Guarantee <p>To ensure that you are spending on quality products, we provide 100% money back guarantee for 30 days from the date of purchase.</p> |  Security & Privacy <p>We respect customer privacy. We use McAfee's security service to provide you with utmost security for your personal information & peace of mind.</p> |
|---|---|--|

Any charges made through this site will appear as Global Simulators Limited.

All trademarks are the property of their respective owners.

Copyright © pass4itsure, All Rights Reserved.