



# 1Y0-301<sup>Q&As</sup>

Deploying Citrix XenDesktop 7.6 Solutions

## Pass Citrix 1Y0-301 Exam with 100% Guarantee

Free Download Real Questions & Answers **PDF** and **VCE** file from:

<https://www.pass4itsure.com/1y0-301.html>

100% Passing Guarantee  
100% Money Back Assurance

Following Questions and Answers are all new published by Citrix  
Official Exam Center

-  **Instant Download** After Purchase
-  **100% Money Back** Guarantee
-  **365 Days** Free Update
-  **800,000+** Satisfied Customers



**QUESTION 1**

Scenario: A Citrix Engineer set Desktop Composition Redirection to '\\Enabled\\' in a policy within Citrix Studio and filtered the policy by virtual desktops. Desktop Composition Redirection is set to '\\Disabled\\' in a group policy object (GPO) applied to the organizational unit (OU) containing all virtual desktops.

What will be the resultant effect of these two policies on the virtual desktops they are applied to?

- A. The two policies will cancel each other out, leaving the desktops with the default settings.
- B. The policy assigned to the OU will take precedence and Desktop Composition Redirection will be disabled.
- C. The Unfiltered policy will take precedence over the conflicting policies, leaving the desktops with the default settings.
- D. The policy assigned in Citrix Studio will apply as it takes precedence over OU policies and Desktop Composition Redirection is enabled.

Correct Answer: B Section: (none)

---

**QUESTION 2**

Scenario: Users in an environment are NOT logging off gracefully. A Citrix Engineer notices that an executable is still running in the user context.

What should the engineer do to ensure graceful logoff from hosted applications?

- A. Disable session lingering.
- B. Disable connection leasing.
- C. Modify LogoffCheckSysModules in the registry.
- D. Modify Citrix Profile Manager folder redirect settings.

Correct Answer: C Section: (none)

---

**QUESTION 3****CORRECT TEXT**

Scenario: Provisioning Services has been installed to facilitate the deployment of Windows 8 desktops and web servers. A Citrix Engineer is instructed to provision web servers using the Web\_Server vDisk. The engineer needs to create a target device and add the device to Active Directory.

The following pieces of information have been provided:

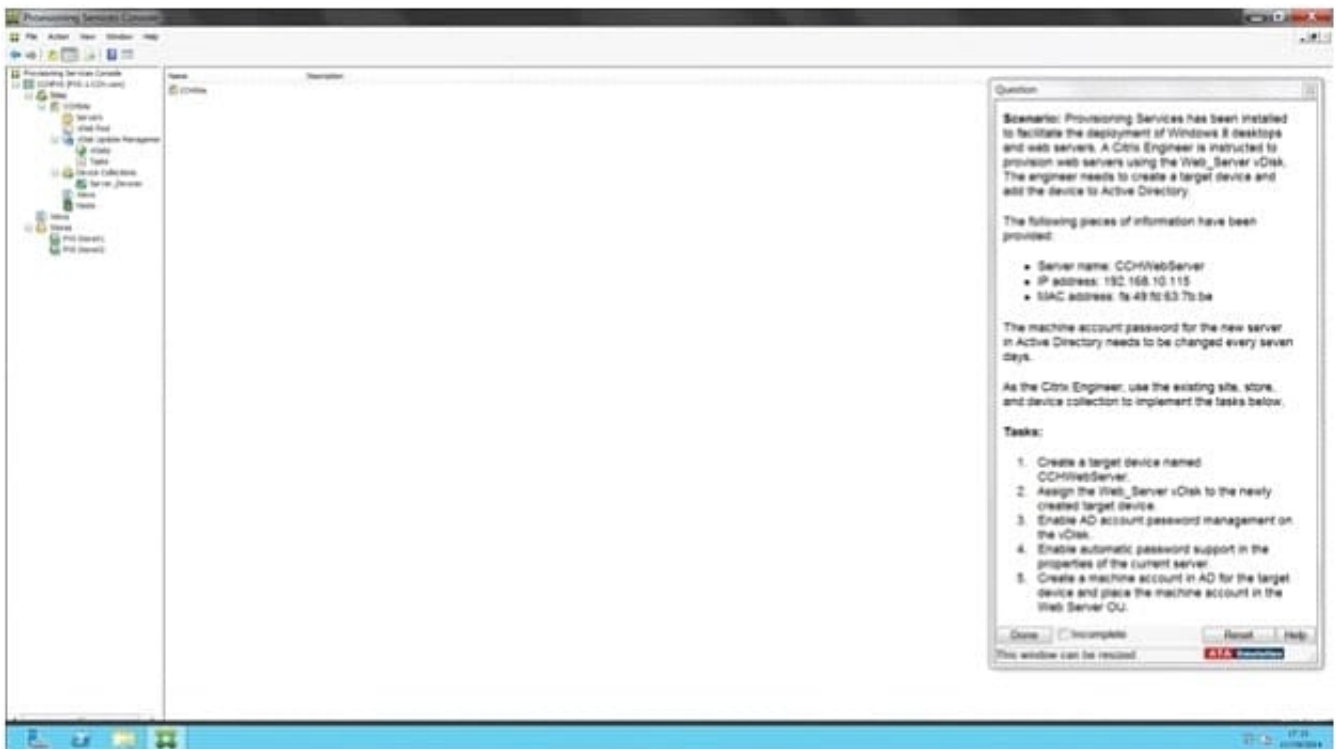
Server name: CCHWebServer IP address: 192.168.10.115 MAC address: fa:49:fd:63:7b:be

The machine account password for the new server in Active Directory needs to be changed every seven days. As the Citrix Engineer, use the existing site, store, and device collection to implement the tasks below.



Tasks:

1.  
Create a target device named CCHWebServer.
2.  
Assign the Web\_Server vDisk to the newly created target device.
3.  
Enable AD account password management on the vDisk.
4.  
Enable automatic password support in the properties of the current server.
5.  
Create a machine account in AD for the target device and place the machine account in the Web Server OU.



A.

Correct Answer: A Section: (none)

Answer: Find the solution with all steps below.

The wizard is run directly from a Provisioning Services Console. Right-click on the Site icon in the Console



tree panel, then select the Streamed VM Setup Wizard... menu option. The Welcome to the Streamed VM Setup Wizard appears.



Click Next to begin the setup.

Select the type of hypervisor (Xenserver per the Simulation) to connect to, then enter the required connection credentials.

The hypervisor information for the environment is:

- XenServer IP Address: 192.168.10.5
- Username: root
- Password: Password1

Click Next to verify the connection. Note: For convenient reuse, the most recently used hypervisor and username will be cached in the registry of the local machine running this instance of the Console. Note: XenServer 5.5 Update 2 hypervisors are not supported in the 5.6.1 Streamed VM Setup Wizard. System Center Virtual Machine Management (SCVMM) servers require PowerShell 2.0 to be installed. Optional. On the Hypervisor cluster screen, select the hypervisor host or cluster to host the VMs, then click Next. Select one VM template from the specified host, then click Next. On the Collection and vDisk page, select the collection in which to add VMs. Select a single shared vDisk within to assign to VMs within that collection, then click Next. Web\_Server vDisk  
uk.co.certification.simulator.questionpool.PList@1669be70

Set the number of VMs to create, the number of vCPUs, and the amount of Memory each new virtual machine will use. 1 VM per the Simulation- CCHWebServer Enable the radio button next to one of the following methods used for adding Active Directory computer accounts, then click Next: Note: An Active Directory administrator will need to delegate rights to the Provisioning Services Console user to allow Active Directory account creation. Note: The domain and OU default to those of the current user. Note: New computer names to be created are first validated that they do not already exist as computers in Active Directory, VMs, or target devices. If the Create new accounts method is selected: Use ?Web Server OU uk.co.certification.simulator.questionpool.PList@16970c10 Review all configuration settings, and then click Next to confirm and finish configurations. Note: Clicking Cancel cancels the configuration of any additional machines, and the quantity of successfully configured machines displays under the Progress bar. If the wizard fails or is cancelled in the middle of an operation, any progress made is retained. If cleanup of existing progress is required, it must be done manually, which includes removing the following: uk.co.certification.simulator.questionpool.PList@16970da0

#### QUESTION 4

Scenario: NFS is implemented as the storage repository type in a XenServer proof-of- concept. One requirement for the production environment shared storage solution is that it should provide high availability.

Which two storage technologies should a Citrix Engineer consider for production use? (Choose two.)

A. CIFS



- B. iSCSI
- C. Local SSD
- D. Fibre Channel

Correct Answer: AC Section: (none)

---

#### QUESTION 5

Which two Windows components can be selected using the Provisioning Services Device Optimization Tool? (Choose two.)

- A. Search
- B. Firewall
- C. SuperFetch
- D. Screen Saver
- E. TCP/IP Offload

Correct Answer: AC Section: (none)

[1Y0-301 VCE Dumps](#)

[1Y0-301 Study Guide](#)

[1Y0-301 Braindumps](#)