



# 1Y0-201<sup>Q&As</sup>

Managing Citrix XenDesktop 7.6 Solutions exam

## Pass Citrix 1Y0-201 Exam with 100% Guarantee

Free Download Real Questions & Answers **PDF** and **VCE** file from:

<https://www.pass4itsure.com/1y0-201.html>

100% Passing Guarantee  
100% Money Back Assurance

Following Questions and Answers are all new published by Citrix  
Official Exam Center

-  **Instant Download** After Purchase
-  **100% Money Back** Guarantee
-  **365 Days** Free Update
-  **800,000+** Satisfied Customers





## QUESTION 1

### SIMULATION

Scenario: A Citrix Administrator must use the Provisioning Services Console to add three additional server OS machines to CCH's environment. The administrator must add the machines to an existing machine catalog named Server 2012

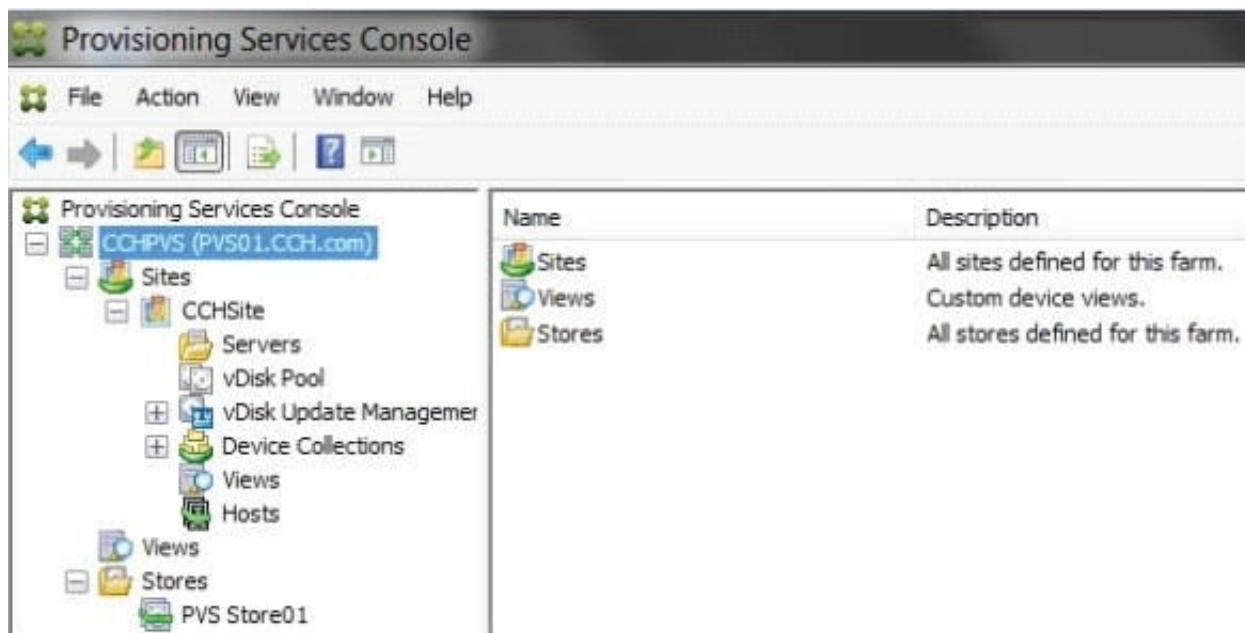
and the machines should be assigned the ServerOS2012 vDisk. The administrator must name the machines AppServer04, AppServer05 and AppServer06, respectively, and the machines should be added to the Server OS Machines OU, with

plans to add 20 more server OS machines in the future. Provisioning Services is configured to use Network0 as a streaming network interface card.

There is currently one Delivery Controller in the environment named Controller-1. This Delivery Controller is a member of the CCH.com domain.

The username for the hypervisor is root, and the password is Password 1. Tasks:

1. Create three target devices named AppServer04, AppServer05 and AppServer06, respectively.



2. Ensure the target devices are configured according to the requirements outlined in the scenario.

Correct Answer:

- 1) Right click on "CCHSite" and click on XenDesktop Setup Wizard.
- 2) From the "Welcome to XenDesktop" dialog window click on Next.
- 3) From the "XenDesktop Controller" dialog window type in Controller-1 in the "XenDesktop Controller address:" field then click on Next.
- 4) From the "XenDesktop Host Resources" dialog windows click on Next.



- 5) From the "XenDesktop Host Resources Credentials" popup window type in the password of Password1 for the username "Root" then click on OK.
  - 6) From the "Template" dialog window select the Server 2012 template then click on Next.
  - 7) From the "vDisk" dialog window select ServerOS2012 vdisk then click on Next.
  - 8) From the "Catalog" dialog window select Create a new catalog, type in a "Catalog name:" of Server 2012 then click on Next.
  - 9) From the "Operating System" select Windows Server Operating System then click on Next.
  - 10) From the "Virtual machines" dialog windows increase the number of "Virtual machines to create:" 3 then click on Next.
  - 11) From the "Active Directory" dialog window verify "Create new accounts" is selected then click on Next.
  - 12) From the "Active Directory accounts and location" dialog window Server OS Machines OU, in the "Account naming scheme" field type in AppServer##, select 0-9 from the drop down to the right, then click on Next.
  - 13) From the "Summary" dialog window click on Finish.
  - 14) When the devices are finished creating click on Done.
- 

## QUESTION 2

Scenario: An organization has headquarters based in London and has branch offices in New York and Beijing. Citrix XenDesktop was recently implemented in the environment. All Desktop OS machines are located within the London

Datacenter while print servers are located in each branch office. Users have been complaining that printing from the branch offices is slow. All branches are connected through a Wide Area Network (WAN). QoS has been implemented for all

ICA/HDX traffic.

How could a Citrix Administrator optimize the printing performance for branch office users without asking for additional investments from management?

- A. Disable client auto-created printers.
- B. Disable direct connections to the print server.
- C. Increase the WAN link speed to the branch offices.
- D. Adjust printing bandwidth as part of the overall user session bandwidth limit.

Correct Answer: B

---

## QUESTION 3

Scenario: In a XenDesktop deployment, a Citrix Administrator must install an application that renders locally and creates a large number of temporary files on the local drive of Desktop OS machines. The administrator creates a vDisk in Private mode that contains the application. Now the administrator must change the vDisk mode from Private to



Standard. The administrator must also determine the appropriate write cache type to configure. Which cache type will likely result in system failures with a blue screen of death?

- A. Cache on server
- B. Cache in device RAM
- C. Cache on server persisted
- D. Cache in device RAM with overflow on hard disk

Correct Answer: D

---

#### QUESTION 4

Scenario: XenDesktop has been implemented with Citrix Profile Manager enabled. Users are complaining that logging on takes a long ti A Citrix Administrator examines the user profile store and finds a number of profiles that have grown to

over 500 MB.

Which profile management setting could the administrator configure to address the slow logon issues?

- A. Active Writeback
- B. Profile Streaming
- C. Registry Exclusion
- D. Cross Platform Settings

Correct Answer: A

---

#### QUESTION 5

Scenario: A Citrix Administrator implemented pooled-random Desktop OS machines with Personal vDisk for the executive staff. The CIO is concerned about the retention of his vDisk. Which tool should the administrator use to implement vDisk retention?

- A. ctxpvd.exe
- B. PowerShell
- C. Citrix Studio
- D. Citrix Director

Correct Answer: B