



199-01^{Q&As}

Riverbed Certified Solutions Professional

Pass Riverbed 199-01 Exam with 100% Guarantee

Free Download Real Questions & Answers **PDF** and **VCE** file from:

<https://www.pass4itsure.com/199-01.html>

100% Passing Guarantee
100% Money Back Assurance

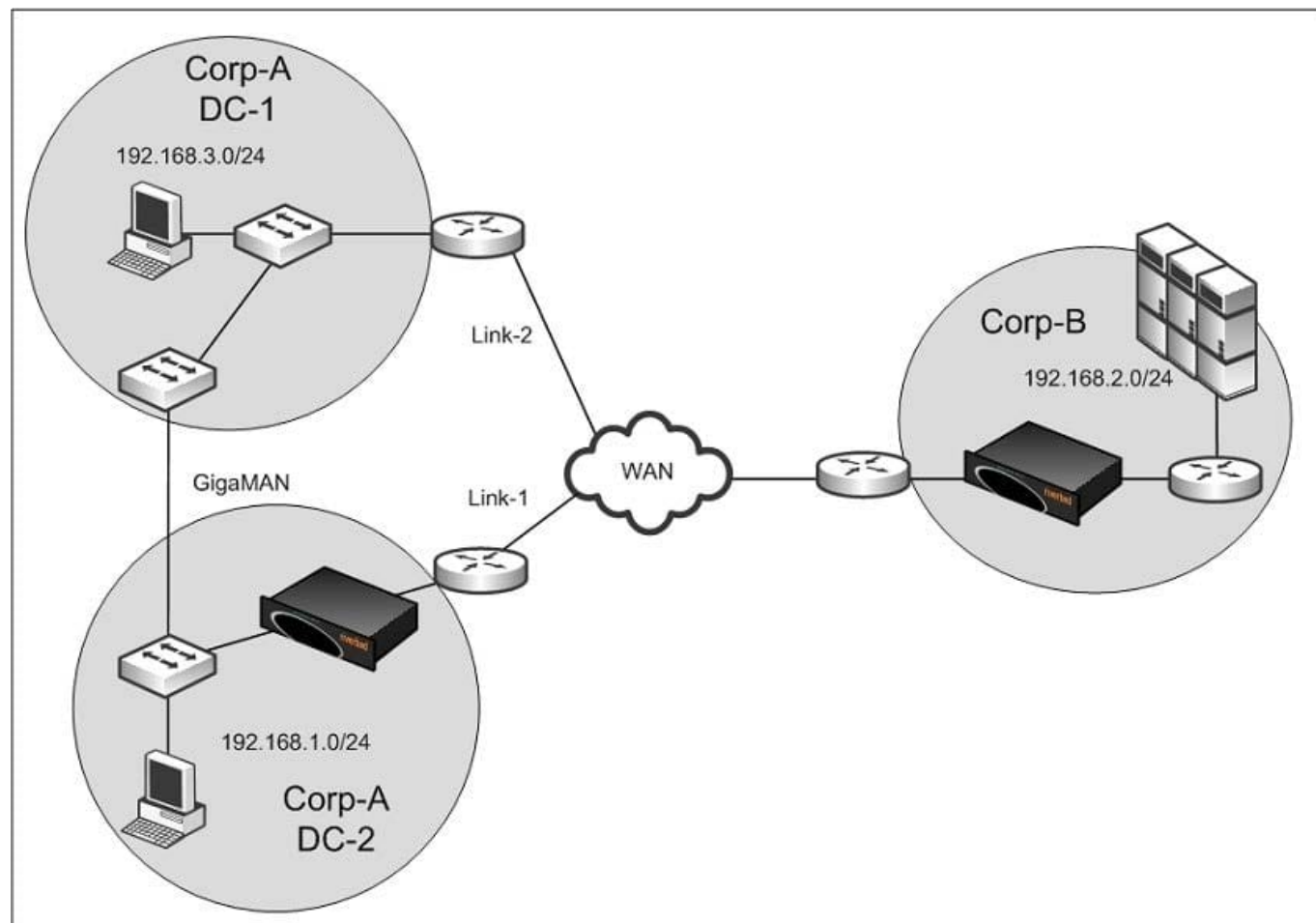
Following Questions and Answers are all new published by Riverbed
Official Exam Center

- ⚙️ **Instant Download** After Purchase
- ⚙️ **100% Money Back** Guarantee
- ⚙️ **365 Days** Free Update
- ⚙️ **800,000+** Satisfied Customers



**QUESTION 1**

Refer to the exhibit.



Traffic going from Corp-A-DC-2 towards Corp-B will always use Link-1. Traffic from Corp-B back to Corp-A-DC-1 may traverse Corp-A-DC-1, over the GigaMAN before it reaches Corp-A-DC-2. No TCP connections are initiated from Corp-B to either Corp-A-DC-1 or Corp-A-DC-2. Unfortunately, the customer does not have any money to purchase any additional Steelheads. What are some possible fixes to ensure optimization occurs while Link-1 is operational? (If Link-1 ceases to function, optimization is not possible.) (Select 2)

- A. Configure a fixed-target rule on the Corp-A-DC-2 Steelhead pointing to the Corp-B Steelhead on port 7800
- B. On the Corp-B Steelhead, enable "in-path probe direct"
- C. On the Corp-A-DC-2 Steelhead, enable "in-path probe direct"
- D. Configure the Corp-A-DC-2 Steelhead to inject a route into the network
- E. Enable Full Transparency

Correct Answer: AC

**QUESTION 2**

When using Correct Addressing and enhanced auto-discovery (EAD), what is the size of the probe response in the return SYN/ACK packet from the server?

- A. 4 bytes
- B. 10 bytes
- C. 14 bytes
- D. 18 bytes
- E. 32 bytes

Correct Answer: D

QUESTION 3

What is the default behavior of an Interceptor appliance using 2.0 code when its peer Interceptor appliance is unavailable?

- A. Redirect to peer
- B. Pass-through new connections
- C. Block all connections
- D. Deny all connections
- E. Optimize all connections

Correct Answer: B

QUESTION 4

You are troubleshooting a TCP connection that is not being optimized. On the Current Connections report, you expand the connection and see the pass-through reason is `Pre-existing connection\\`.

Without restarting the optimization service, how could you get this connection to optimize?

- A. Reset the connection in the Current Connections report.
- B. Create a full-transparency in-path rule for the source and destination hosts.
- C. Create a fixed-target in-path rule for the source and destination hosts.
- D. Enable auto-kick-off on the default in-path rule.
- E. Enable Simplified Routing in `all\\` mode.

Correct Answer: A



QUESTION 5

What interface on the CMC appliance is required for the initial configuration?

- A. In-path interface
- B. AUX interface
- C. WAN interface
- D. Primary interface
- E. LAN interface

Correct Answer: D

[199-01 PDF Dumps](#)

[199-01 Study Guide](#)

[199-01 Braindumps](#)