



199-01^{Q&As}

Riverbed Certified Solutions Professional

Pass Riverbed 199-01 Exam with 100% Guarantee

Free Download Real Questions & Answers **PDF** and **VCE** file from:

<https://www.pass4itsure.com/199-01.html>

100% Passing Guarantee
100% Money Back Assurance

Following Questions and Answers are all new published by Riverbed
Official Exam Center

- ⚙️ **Instant Download** After Purchase
- ⚙️ **100% Money Back** Guarantee
- ⚙️ **365 Days** Free Update
- ⚙️ **800,000+** Satisfied Customers



**QUESTION 1**

Which of the following custom TACACS+ attribute-value (AV) pairs gives the user guest privileges?

- A. local-user-name=anonymous
- B. local-user-name=guest
- C. local-user-name=administrator
- D. local-user-name=monitor
- E. local-user-name=ghost

Correct Answer: D

QUESTION 2

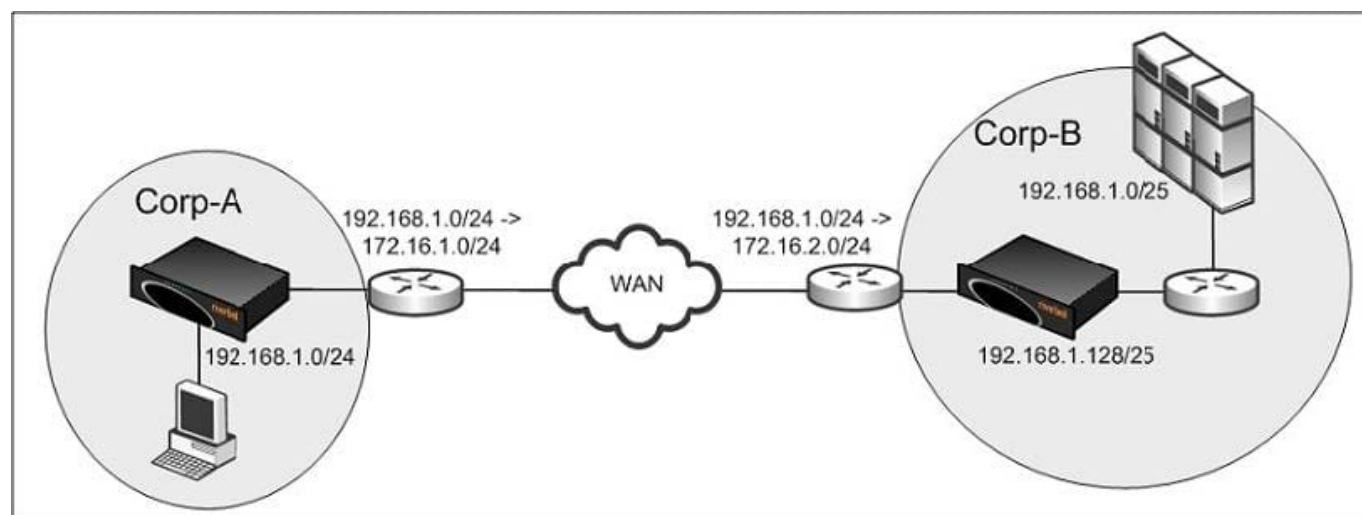
A customer uses a single URL for a service that uses many servers with different certificates. What SSL options should be enabled to enhance performance?

- A. Passive key derivation
- B. SSL proxy support and SNI (Server name indication)
- C. SSL advanced mode
- D. Early start/late finish

Correct Answer: C

QUESTION 3

Refer to the exhibit.





Corp-A and Corp-B have overlapping address space and therefore the network administrator implemented NAT to overcome this. Users from Corp-A NAT to 172.16.1.0/24 and users from Corp-B NAT to 172.16.2.0/24. Users in Corp-A use the destination address of 172.16.2.0/24 to access the resources in Corp-B. The servers in Corp-B use the client IP for authentication. You deploy the Steelhead appliance using the default WAN visibility mode but noticed all the connections are passed-through. What is the likely problem?

- A. When the Steelhead appliance in Corp-B opens the outer connection, it is using the source IP of 172.16.2.x instead of 192.168.1.x
- B. On the Steelhead appliance in Corp-B, there is a missing static route for the 192.168.1.0/25 network
- C. On the Steelhead appliance in Corp-A, there is a missing static route for the 172.16.2.0/24 network
- D. When the Steelhead appliance in Corp-B opens the outer connection, it is using the source IP of 192.168.1.x instead of 172.16.1.x
- E. None of the above

Correct Answer: D

QUESTION 4

-- Exhibit

Web Caches:			
Index	ID	Weight	Distribution
Q 1	172.16.10.101 (inpath0_0)	25	51 (19.92%)
Q 2	172.16.11.101	100	205 (80.08%)

-- Exhibit -

Refer to the exhibit. In a WCCP environment with R3, SH10 and SH11, the following screenshot shows that the load is not being distributed evenly in between the Steelhead appliances. Why?

- A. They are different Steelhead appliances models.
- B. One of the Steelhead appliances currently has a lower number of TCP connections available.
- C. The weight setting is being used on the WCCP configuration.
- D. One of the Steelhead appliances is in admission control.

Correct Answer: C

QUESTION 5



-- Exhibit

Reports > Networking > Current Connections

Established	Half-Open	Half-Closed	Passthrough	Forwarded	Total Optimized	Total	Discarded	Denied	Total Rejected
2	0	0	0	0	2	2	0	0	0

Display: 20 100 250 1000 4000 Connections of Type: All Optimized

Filter by: Regular Expression

Type	Source:Port	Destination:Port	Reduction	LAN KB/WAN KB	Data Start Time	Application	Notes
Q	172.16.32.99:53411	172.16.31.88:445	<div><div></div></div> (11%)	10 KB/0 KB	2013/06/01 13:25:26	SMB2	
Q	172.16.32.99:53522	172.16.31.88:445	<div><div></div></div> (0%)	2 KB/2 KB	2013/06/01 13:31:32	CIFS	

-- Exhibit -Refer to the exhibit. When USER1 tried to map shares to Server 1 and Server 2, he got the results shown.

What does the report represent? (Select 2)

- A. The connection to Server 2 is optimized. The performance should be good.
- B. The connection to Server 2 is optimized, with errors, the performance should be poor.
- C. The connection to Server 1 is optimized. The performance should be good.
- D. The connection to Server 1 is optimized, with errors, the performance should be poor.
- E. The connection to Server 1 is not being optimized.

Correct Answer: AD

[199-01 Practice Test](#)

[199-01 Exam Questions](#)

[199-01 Braindumps](#)