



156-915.77^{Q&As}

Check Point Certified Security Expert Update

Pass CheckPoint 156-915.77 Exam with 100% Guarantee

Free Download Real Questions & Answers **PDF** and **VCE** file from:

<https://www.pass4itsure.com/156-915-77.html>

100% Passing Guarantee
100% Money Back Assurance

Following Questions and Answers are all new published by CheckPoint Official Exam Center

-  **Instant Download** After Purchase
-  **100% Money Back** Guarantee
-  **365 Days** Free Update
-  **800,000+** Satisfied Customers



**QUESTION 1**

How could you compare the Fingerprint shown to the Fingerprint on the server? Exhibit:



- A. Run cpconfig, select the Certificate's Fingerprint option and view the fingerprint
- B. Run cpconfig, select the GUI Clients option and view the fingerprint
- C. Run cpconfig, select the Certificate Authority option and view the fingerprint
- D. Run sysconfig, select the Server Fingerprint option and view the fingerprint

Correct Answer: A

QUESTION 2

When using AD Query to authenticate users for Identity Awareness, identity data is received seamlessly from the Microsoft Active Directory (AD). What is NOT a recommended usage of this method?

- A. Leveraging identity in the application control blade
- B. Basic identity enforcement in the internal network
- C. Identity-based auditing and logging
- D. Identity-based enforcement for non-AD users (non-Windows and guest users)

Correct Answer: D



QUESTION 3

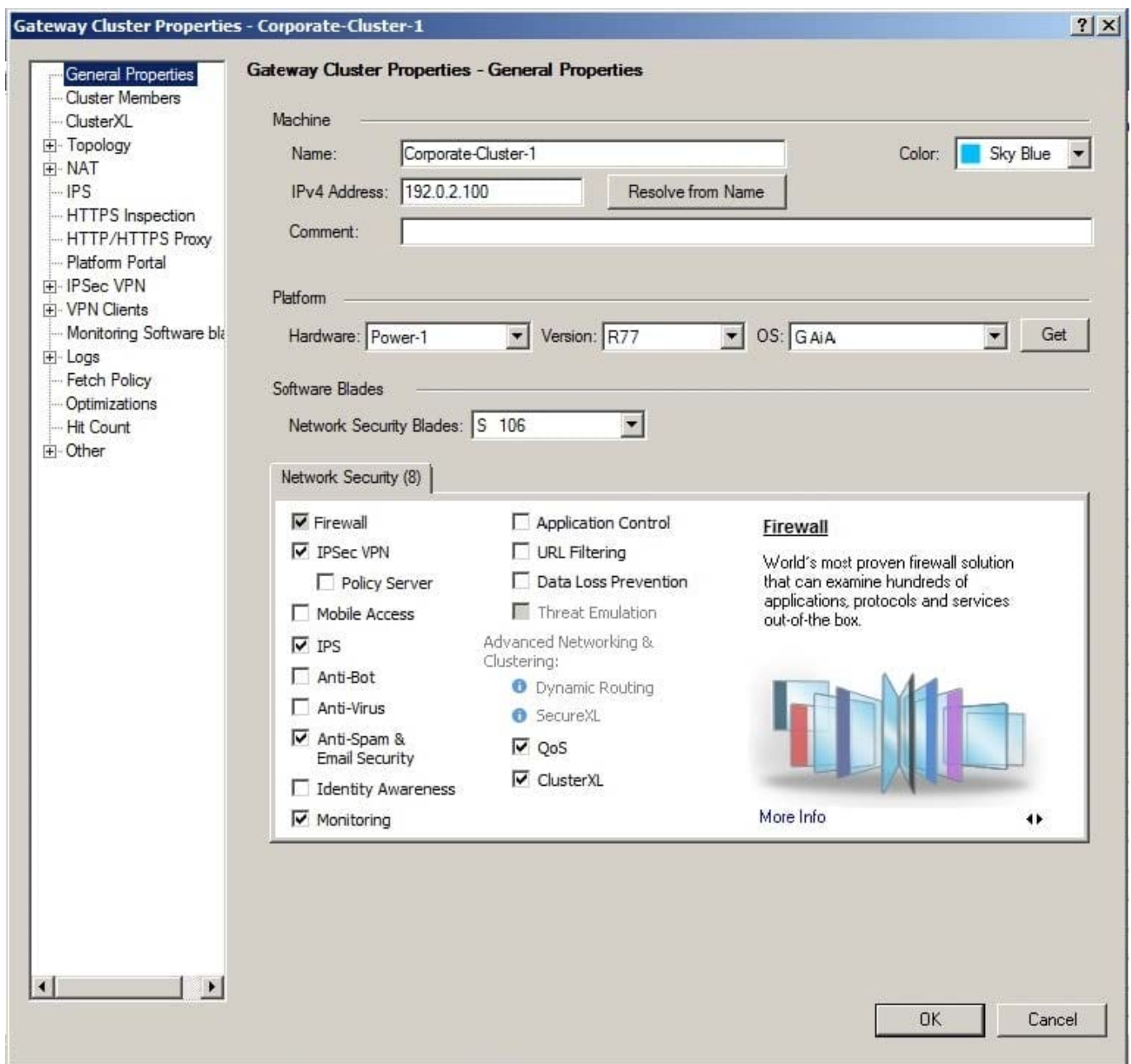
Type the full fw command and syntax that will show full synchronization status.

A. fw ctl pstat

Correct Answer: A

QUESTION 4

John is configuring a new R77 Gateway cluster but he can not configure the cluster as Third Party IP Clustering because this option is not available in Gateway Cluster Properties.



What's happening?



- A. ClusterXL needs to be unselected to permit third party clustering configuration.
- B. Third Party Clustering is not available for R77 Security Gateways.
- C. John has an invalid ClusterXL license.
- D. John is not using third party hardware as IP Clustering is part of Check Point's IP Appliance.

Correct Answer: A

QUESTION 5

You want to implement Static Destination NAT in order to provide external, Internet users access to an internal Web Server that has a reserved (RFC 1918) IP address. You have an unused valid IP address on the network between your Security Gateway and ISP router. You control the router that sits between the firewall external interface and the Internet.

What is an alternative configuration if proxy ARP cannot be used on your Security Gateway?

- A. Publish a proxy ARP entry on the ISP router instead of the firewall for the valid IP address.
- B. Place a static ARP entry on the ISP router for the valid IP address to the firewall's external address.
- C. Publish a proxy ARP entry on the internal Web server instead of the firewall for the valid IP address.
- D. Place a static host route on the firewall for the valid IP address to the internal Web server.

Correct Answer: B

[156-915.77 PDF Dumps](#)

[156-915.77 Practice Test](#)

[156-915.77 Braindumps](#)