



156-915.77^{Q&As}

Check Point Certified Security Expert Update

Pass CheckPoint 156-915.77 Exam with 100% Guarantee

Free Download Real Questions & Answers **PDF** and **VCE** file from:

<https://www.pass4itsure.com/156-915-77.html>

100% Passing Guarantee
100% Money Back Assurance

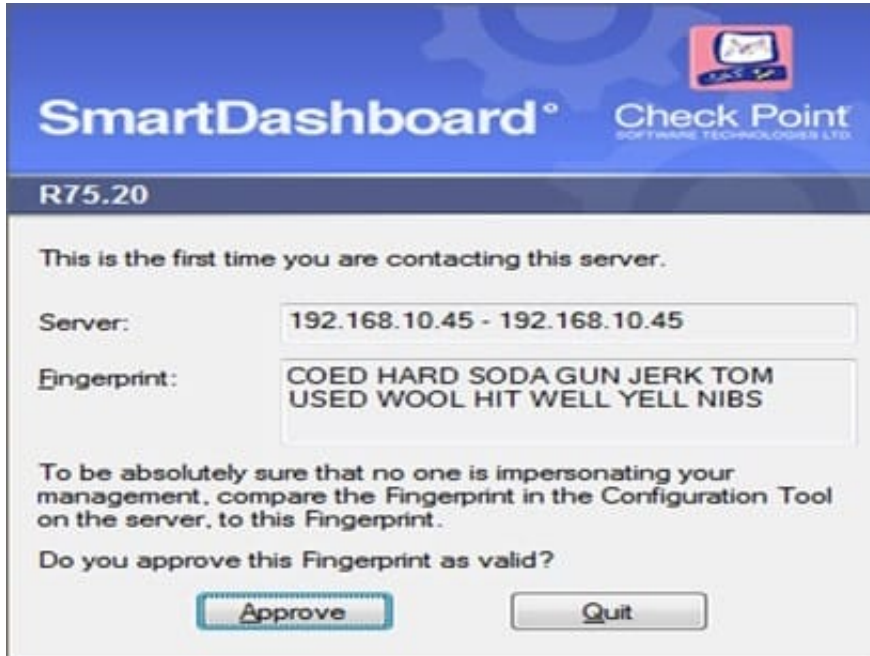
Following Questions and Answers are all new published by CheckPoint Official Exam Center

-  **Instant Download** After Purchase
-  **100% Money Back** Guarantee
-  **365 Days** Free Update
-  **800,000+** Satisfied Customers



**QUESTION 1**

How could you compare the Fingerprint shown to the Fingerprint on the server? Run cpconfig and select: Exhibit:



- A. the Certificate Authority option and view the fingerprint.
- B. the GUI Clients option and view the fingerprint.
- C. the Certificate's Fingerprint option and view the fingerprint.
- D. the Server Fingerprint option and view the fingerprint.

Correct Answer: C

QUESTION 2

The third-shift Administrator was updating Security Management Server access settings in Global Properties and testing. He managed to lock himself out of his account. How can you unlock this account?

- A. Type `fwm unlock_admin` from the Security Management Server command line.
- B. Type `fwm unlock_admin -u` from the Security Gateway command line.
- C. Type `fwm lock_admin -u` from the Security Management Server command line.
- D. Delete the file `admin.lock` in the Security Management Server directory `$FWDIR/tmp/`.

Correct Answer: C

**QUESTION 3**

A snapshot delivers a complete backup of Secure Platform. The resulting file can be stored on servers or as a local file in /var/CP snapshot/snapshots. How do you restore a local snapshot named MySnapshot.tgz?

- A. As Expert user, type command snapshot - R to restore from a local file. Then, provide the correct file name.
- B. As Expert user, type command revert --file MySnapshot.tgz.
- C. As Expert user, type command snapshot -r MySnapshot.tgz.
- D. Reboot the system and call the start menu. Select option Snapshot Management, provide the Expert password and select [L] for a restore from a local file. Then, provide the correct file name.

Correct Answer: B

QUESTION 4

Which of the following items should be configured for the Security Management Server to authenticate via LDAP?

- A. Check Point Password
- B. Active Directory Server object
- C. Windows logon password
- D. WMI object

Correct Answer: B

QUESTION 5

John Adams is an HR partner in the ACME organization. ACME IT wants to limit access to HR servers to designated IP addresses to minimize malware infection and unauthorized access risks. Thus, the gateway policy permits access only from John's desktop which is assigned an IP address 10.0.0.19 via DHCP.

John received a laptop and wants to access the HR Web Server from anywhere in the organization. The IT department gave the laptop a static IP address, but that limits him to operating it only from his desk. The current Rule Base contains a rule that lets John Adams access the HR Web Server from his laptop. He wants to move around the organization and continue to have access to the HR Web Server.

To make this scenario work, the IT administrator:

- 1) Enables Identity Awareness on a gateway, selects AD Query as one of the Identity Sources installs the policy.
- 2) Adds an access role object to the Firewall Rule Base that lets John Adams PC access the HR Web Server from any machine and from any location.

John plugged in his laptop to the network on a different network segment and he is not able to connect. How does he solve this problem?

- A. John should install the Identity Awareness Agent



- B. The firewall admin should install the Security Policy
- C. John should lock and unlock the computer
- D. Investigate this as a network connectivity issue

Correct Answer: B

[Latest 156-915.77 Dumps](#)

[156-915.77 PDF Dumps](#)

[156-915.77 Braindumps](#)