



# 156-727.77<sup>Q&As</sup>

Threat Prevention

## Pass CheckPoint 156-727.77 Exam with 100% Guarantee

Free Download Real Questions & Answers **PDF** and **VCE** file from:

<https://www.pass4itsure.com/156-727-77.html>

100% Passing Guarantee  
100% Money Back Assurance

Following Questions and Answers are all new published by CheckPoint Official Exam Center

-  **Instant Download** After Purchase
-  **100% Money Back** Guarantee
-  **365 Days** Free Update
-  **800,000+** Satisfied Customers



**QUESTION 1**

You just enabled the IPS blade, and have downloaded the latest signature updates. You created a custom profile but you are concerned that if you push a policy it might start dropping existing connections. What should you do?

- A. Use the recommend Protection profile instead
- B. Edit your custom profile and select Detect-only for Troubleshooting mode
- C. Edit your custom profile and enable Bypass under load
- D. Use the Default protection profile instead

Correct Answer: B

---

**QUESTION 2**

When pushing the Threat Prevention policy, which of the following blades will NOT get updated?

- A. IPS
- B. Threat Emulation
- C. Anti-Bot
- D. Anti-Virus

Correct Answer: A

---

**QUESTION 3**

When the feature \_\_\_\_\_ is ON, the Gateway does not block DNS requests that were identified as malicious. Instead it sends a false response with a bogus IP address to the client.

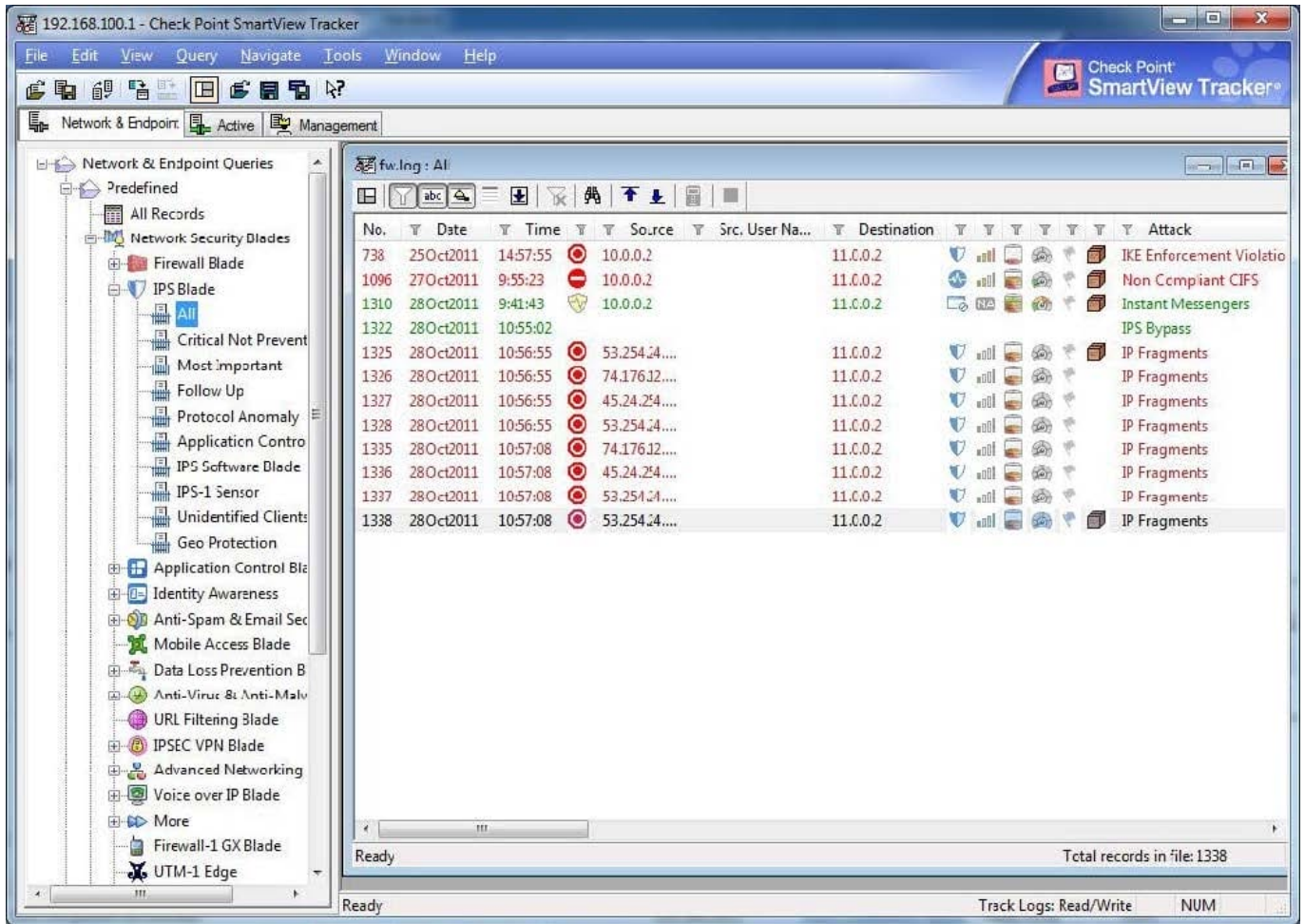
- A. Malware DNS Blacklist
- B. Malware DNS Trap
- C. Malware DNS Sinkhole
- D. Malware DNS Blackhole

Correct Answer: B

---

**QUESTION 4**

Looking at these logs, what happened at 10:55?



- A. An IPS rule was installed, causing IPS to temporarily stop working
- B. The Gateway was rebooted, causing IPS to temporarily stop working
- C. A new IPS policy was installed, causing IPS to temporarily stop working
- D. IPD Inspections were temporarily suspended, due to high load on the gateway

Correct Answer: D

### QUESTION 5

What is the main purpose of the ThreatCloud?

- A. It is used in conjunction with IPS.
- B. This is the place where ThreatWiki fetches the actual information.
- C. It feeds security gateway software blades (i.e. Anti-Virus and Anti-Bot) with real-time security intelligence.
- D. It is a database used by SANS institute (formerly known as StormCenter).

Correct Answer: C



VCE & PDF

Pass4itSure.com

<https://www.pass4itsure.com/156-727-77.html>

2024 Latest pass4itsure 156-727.77 PDF and VCE dumps Download

---

[156-727.77 PDF Dumps](#)

[156-727.77 Practice Test](#)

[156-727.77 Study Guide](#)