



156-115.77^{Q&As}

Check Point Certified Security Master

Pass CheckPoint 156-115.77 Exam with 100% Guarantee

Free Download Real Questions & Answers **PDF** and **VCE** file from:

<https://www.pass4itsure.com/156-115-77.html>

100% Passing Guarantee
100% Money Back Assurance

Following Questions and Answers are all new published by CheckPoint Official Exam Center

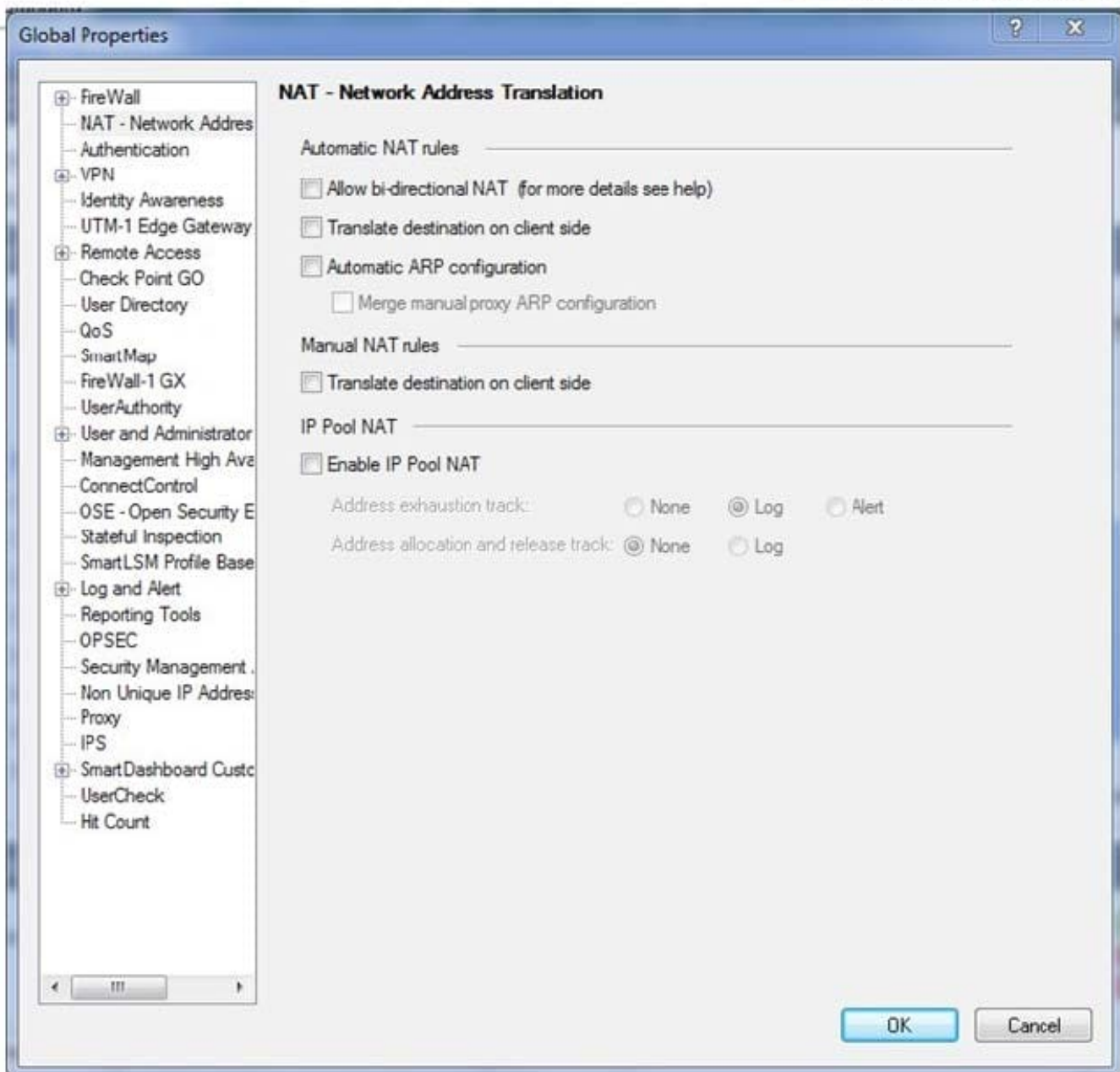
-  **Instant Download** After Purchase
-  **100% Money Back** Guarantee
-  **365 Days** Free Update
-  **800,000+** Satisfied Customers





QUESTION 1

Tom has a Web server for which he has created a manual NAT rule. The rule is not working. He tries to initiate a connection from the external network to a DMZ server using the public IP which the firewall translates to the actual IP of the server. He analyzes the captured packets using Wireshark and observes that the destination IP is being changed as required by the firewall but does not see the packet leave the internal interface. Which box in Global Properties should be checked?





- A. Automatic NAT rules > Allow bi-directional NAT
- B. Automatic NAT rules > Automatic ARP Configuration
- C. Automatic NAT rules > Translate destination on client side
- D. Manual NAT rules > Translate destination on client side

Correct Answer: D

QUESTION 2

What is the command to check how many connections the firewall has detected for the SecureXL device?

- A. fw tab t connections s
- B. fw tab -t cphwd_db s
- C. fw tab t connection s | grep template
- D. fwaccel conns

Correct Answer: B

QUESTION 3

The user tried to connect in SmartDashboard and did not work. You started a FWM debug and receive the logs below:



```
[FWM 4929 201214:344]@standalone[4 Aug 11:10:56] opsec_send_datagram_e: SESSION ID:3 is sending DG_ID=3 DG_TYPE=0xf01(???)
[FWM 4929 201214:344]@standalone[4 Aug 11:10:56] ckpSSL_do_write: write 527 bytes
[FWM 4929 201214:344]@standalone[4 Aug 11:10:56] opsec_comm_notify: COM 0x9f2b510 got signal 131074
[FWM 4929 201214:344]@standalone[4 Aug 11:10:56] ckpSSL_do_read: read 12 bytes
[FWM 4929 201214:344]@standalone[4 Aug 11:10:56] fwasync_conn_get: get max buffer size (80000000) .
[FWM 4929 201214:344]@standalone[4 Aug 11:10:56] ckpSSL_inputPending 1 pending bytes
[FWM 4929 201214:344]@standalone[4 Aug 11:10:56] ckpSSL_inputPending 1 pending bytes
[FWM 4929 201214:344]@standalone[4 Aug 11:10:56] ckpSSL_do_read: read 95 bytes
[FWM 4929 201214:344]@standalone[4 Aug 11:10:56] fwasync_conn_get: get max buffer size (80000000) .
[FWM 4929 201214:344]@standalone[4 Aug 11:10:56] demultiplex_type=e02 session-id=3
[FWM 4929 201214:344]@standalone[4 Aug 11:10:56] Administrator checkpoint was not found in fwm database
[FWM 4929 201214:344]@standalone[4 Aug 11:10:56] cpac_get_msg_by_id: Cache HIT for CPSC_UNKNOWN_USER
[FWM 4929 201214:344]@standalone[4 Aug 11:10:56] cpac_get_msg_by_id: Cache HIT for CPSC_INTERNAL_ACCESS_DENIED
[FWM 4929 201214:344]@standalone[4 Aug 11:10:56] cpac_get_msg_by_id: Cache HIT for CPSC_GENERIC
[FWM 4929 201214:344]@standalone[4 Aug 11:10:56] auth failed: Delaying reply by 0 mSec.
[FWM 4929 201214:344]@standalone[4 Aug 11:10:56] fwm_cpmi_auth_handler 2: Login failed for checkpoint: Unknown administrator checkpoint
[FWM 4929 201214:344]@standalone[4 Aug 11:10:56] CFwdCommStreamLocal::Write called
[FWM 4929 201214:344]@standalone[4 Aug 11:10:56] CFwdCommStreamLocal::Write sent 260 bytes
[FWM 4929 201214:344]@standalone[4 Aug 11:10:56] cpmi_send_sset: session=0x0b589f18, id=2, last=1, set=
(userc2
```

What is the error cause?

- A. IP not defined in \$FWDIR/conf/gui-clients
- B. Wrong user and password
- C. Wrong password

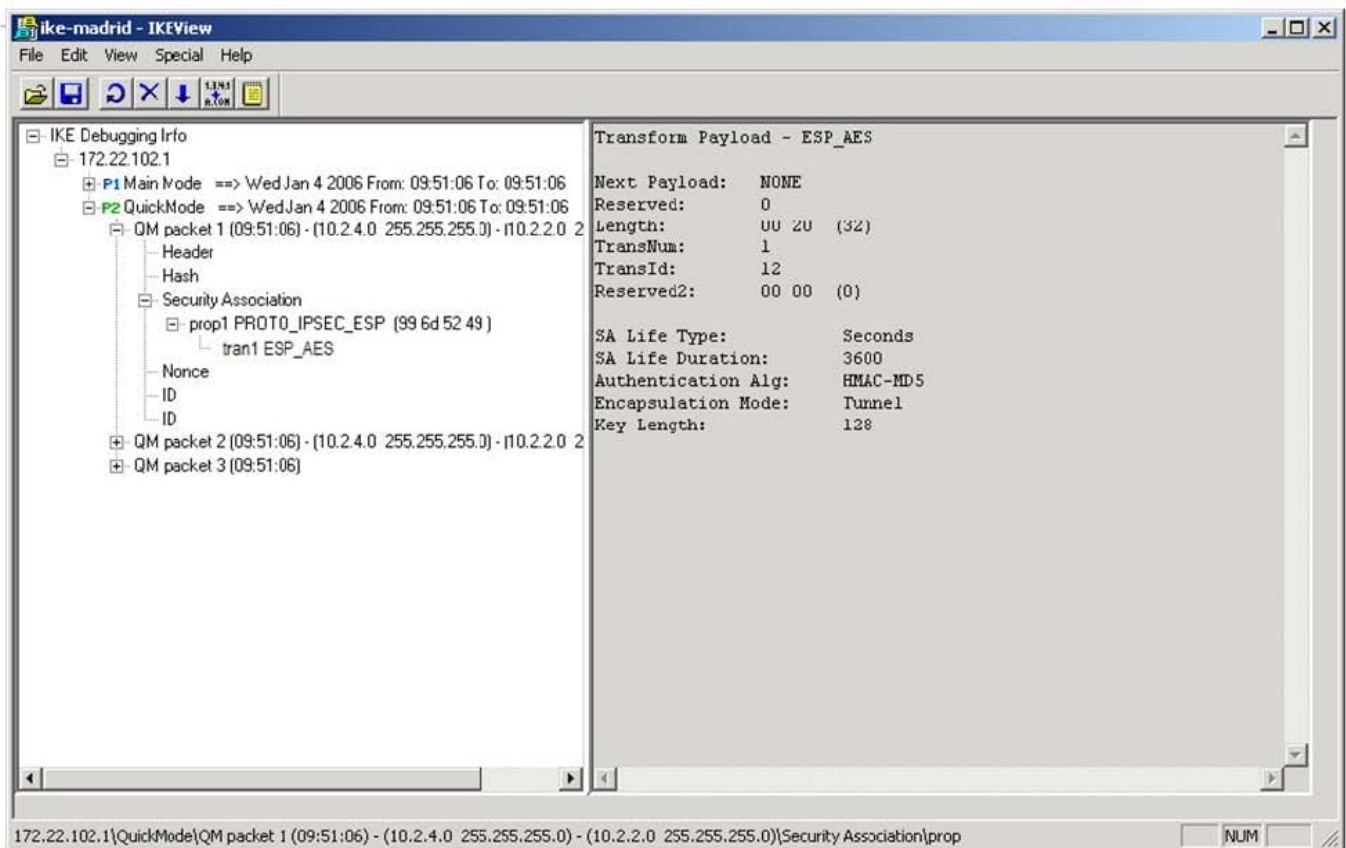


D. Wrong user

Correct Answer: D

QUESTION 4

Given the screen configuration shown, the failure's probable cause is: A. Packet 1 Proposes SA life Type , Sa Life Duration, Authentication and Encapsulation Algorithm.



©2014 Check Point Software Technologies Ltd.

5

B. Packet 1 proposes a symmetrical key.

C. Packet 1 proposes a subnet and host ID, an encryption and hash algorithm.

D. Packet 1 proposes either a subnet or host ID, an encryption and hash algorithm, and ID data.

Correct Answer: D

QUESTION 5

Which program could you use to analyze Phase I and Phase II packet exchanges?

A. vpnView



B. Check PointView

C. IKEView

D. vpndebugView

Correct Answer: C

[Latest 156-115.77 Dumps](#)

[156-115.77 PDF Dumps](#)

[156-115.77 Braindumps](#)