



# 156-115.77<sup>Q&As</sup>

Check Point Certified Security Master

## Pass CheckPoint 156-115.77 Exam with 100% Guarantee

Free Download Real Questions & Answers **PDF** and **VCE** file from:

<https://www.pass4itsure.com/156-115-77.html>

100% Passing Guarantee  
100% Money Back Assurance

Following Questions and Answers are all new published by CheckPoint Official Exam Center

-  **Instant Download** After Purchase
-  **100% Money Back** Guarantee
-  **365 Days** Free Update
-  **800,000+** Satisfied Customers



**QUESTION 1**

When you have your directional VPN enforcement rule set to "Internal\_Clear" , what does this represent?

- A. All interfaces are designated "External"
- B. VOIP traffic
- C. Do not perform directional VPN enforcements on this traffic
- D. All interfaces are designated as "Internal"

Correct Answer: D

---

**QUESTION 2**

What is the difference between "connection establishment acceleration" (templating) and "traffic acceleration"?

- A. These are the same technologies with different names.
- B. "Connection establishment acceleration" only accelerates a single connection, while "traffic acceleration" accelerates similar traffic.
- C. "Traffic acceleration" is accelerated through hardware, and "connection establishment acceleration" is accelerated in software.
- D. "Traffic acceleration" only accelerates a single connection, while "connection establishment acceleration" accelerates similar traffic.

Correct Answer: D

---

**QUESTION 3**

What is the log file that shows the processes that participate in the tunnel initiation stage?

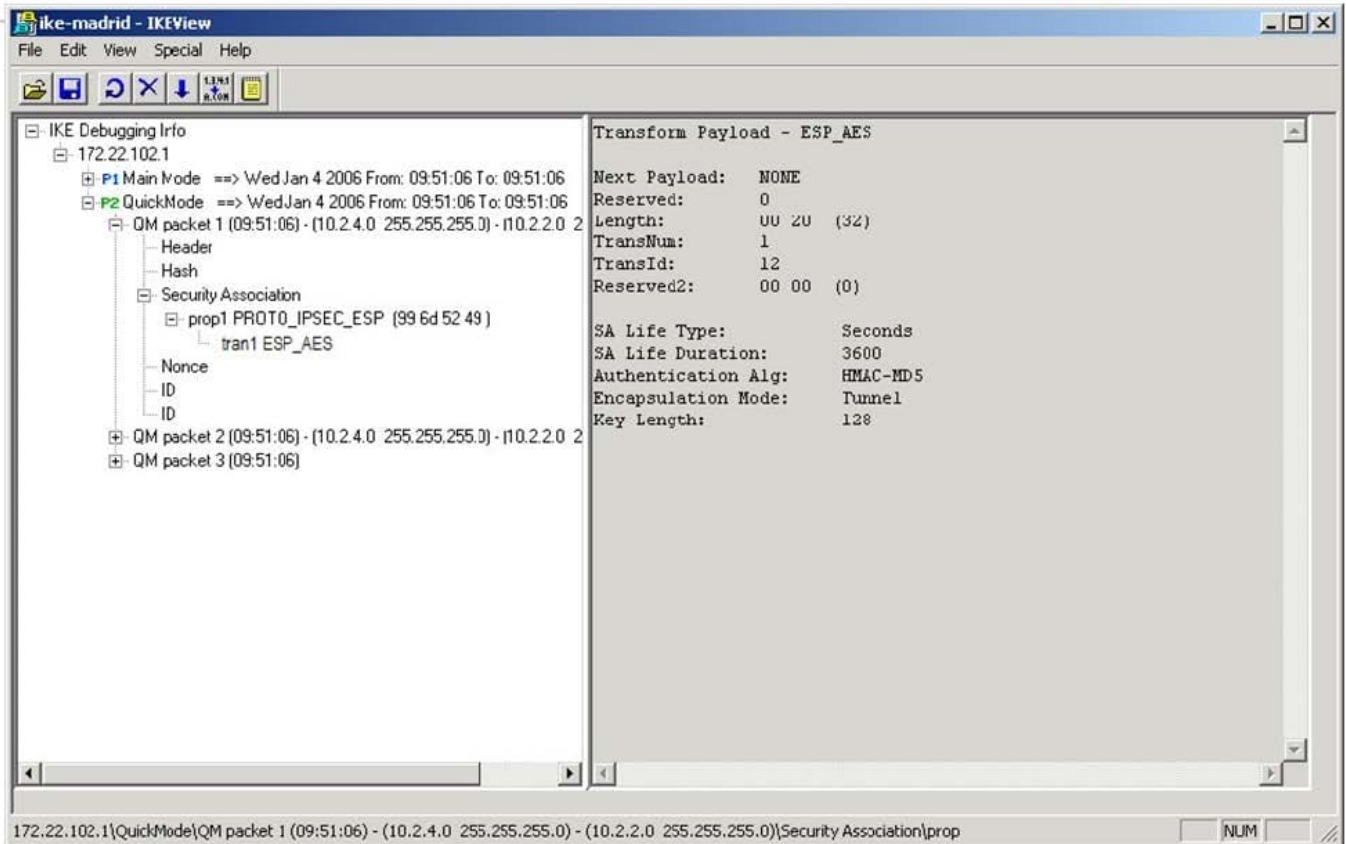
- A. \$FWDIR/log/ikev2.xml
- B. \$FWDIR/log/ike.xml
- C. \$FWDIR/log/vpnd.elg
- D. \$FWDIR/log/ike.elg

Correct Answer: C

---

**QUESTION 4**

Given the screen configuration shown, the failure's probable cause is: A. Packet 1 Proposes SA life Type , Sa Life Duration, Authentication and Encapsulation Algorithm.



©2014 Check Point Software Technologies Ltd.

5

- B. Packet 1 proposes a symmetrical key.
- C. Packet 1 proposes a subnet and host ID, an encryption and hash algorithm.
- D. Packet 1 proposes either a subnet or host ID, an encryption and hash algorithm, and ID data.

Correct Answer: D

### QUESTION 5

What command displays the Connections Table for a specified CoreXL firewall instance?

- A. fw tab t connections s
- B. fw -i FW\_INSTANCE\_ID tab -t connections [flags]
- C. fw tab t connection | grep fw
- D. fw tab t connections

Correct Answer: B



VCE & PDF

Pass4itSure.com

<https://www.pass4itsure.com/156-115-77.html>

2024 Latest pass4itsure 156-115.77 PDF and VCE dumps Download

---

[Latest 156-115.77 Dumps](#)

[156-115.77 PDF Dumps](#)

[156-115.77 Exam Questions](#)