



# 100-101<sup>Q&As</sup>

CCNA Interconnecting Cisco Networking Devices 1 (ICND1)

## Pass Cisco 100-101 Exam with 100% Guarantee

Free Download Real Questions & Answers **PDF** and **VCE** file from:

<https://www.pass4itsure.com/100-101.html>

100% Passing Guarantee  
100% Money Back Assurance

Following Questions and Answers are all new published by Cisco  
Official Exam Center


- ⚙ **Instant Download** After Purchase
- ⚙ **100% Money Back** Guarantee
- ⚙ **365 Days** Free Update
- ⚙ **800,000+** Satisfied Customers



**QUESTION 1**

Refer to the exhibit.

```
interface vlan 1
ip address 192.168.17.253 255.255.255.240
no shutdown
exit
ip default-gateway 192.168.17.1
line vty 0 15
password cisco
login
exit
```



A network administrator has configured a Catalyst 2950 switch for remote management by pasting into the console the configuration commands that are shown in the exhibit. However, a Telnet session cannot be successfully established from a remote host. What should be done to fix this problem?

- A. Change the first line to interface fastethernet 0/1.
- B. Change the first line to interface vlan 0/1.
- C. Change the fifth line to ip default-gateway 192.168.17.241.
- D. Change the fifth line to ip route 0.0.0.0 0.0.0.0 192.168.17.1.
- E. Change the sixth line to line con 0.

Correct Answer: C

The default gateway for remote session is 192.168.17.241 and not the one given in the exhibit.

---

**QUESTION 2**

Refer to the exhibit.



City#show ip interface brief

Interface	IP-Address	OK?	Method	Status	Protocol
FastEthernet0/0	192.168.12.48	YES	manual	up	up
FastEthernet0/1	192.168.12.65	YES	manual	up	up
Serial0/0	192.168.12.121	YES	manual	up	up
Serial0/1	unassigned	YES	unset	up	up
Serial0/1.102	192.168.12.125	YES	manual	up	up
Serial0/1.103	192.168.12.129	YES	manual	up	up
Serial0/1.104	192.168.12.133	YES	manual	up	up

City#



A network associate has configured OSPF with the command:

City(config-router)# network 192.168.12.64 0.0.0.63 area 0

After completing the configuration, the associate discovers that not all the interfaces are participating in OSPF. Which three of the interfaces shown in the exhibit will participate in OSPF according to this configuration statement? (Choose three.)

- A. FastEthernet0 /0
- B. FastEthernet0 /1
- C. Serial0/0
- D. Serial0/1.102
- E. Serial0/1.103
- F. Serial0/1.104

Correct Answer: BCD

The "network 192.168.12.64 0.0.0.63 equals to network 192.168.12.64/26. This network has:

+ Increment: 64 (/26= 1111 1111.1111 1111.1111 1111.1100 0000) + Network address: 192.168.12.64 + Broadcast address: 192.168.12.127 Therefore all interface in the range of this network will join OSPF.

### QUESTION 3

Which IOS command is used to initiate a login into a VTY port on a remote router?

- A. router# login
- B. router# telnet
- C. router# trace
- D. router# ping



E. router(config)# line vty 0 5

F. router(config-line)# login

Correct Answer: B

VTY ports are telnet ports hence command B will initiate login to the telnet port.

---

#### QUESTION 4

What does the "Inside Global" address represent in the configuration of NAT?

- A. the summarized address for all of the internal subnetted addresses
- B. the MAC address of the router used by inside hosts to connect to the Internet
- C. a globally unique, private IP address assigned to a host on the inside network
- D. a registered address that represents an inside host to an outside network

Correct Answer: D

NAT: Local and Global Definitions

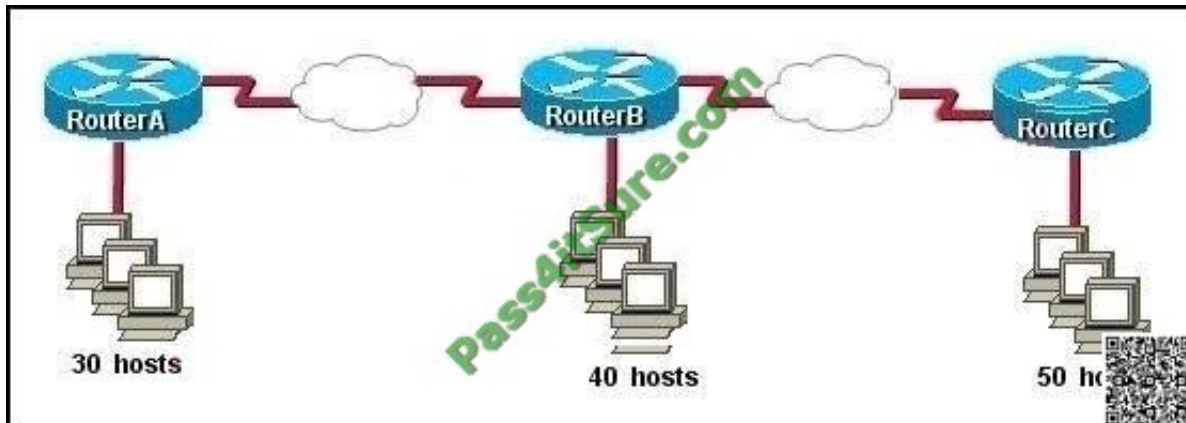
[http://www.cisco.com/en/US/tech/tk648/tk361/technologies\\_tech\\_note09186a0080094837.shtml](http://www.cisco.com/en/US/tech/tk648/tk361/technologies_tech_note09186a0080094837.shtml)

Cisco defines these terms as: Inside local address--The IP address assigned to a host on the inside network. This is the address configured as a parameter of the computer OS or received via dynamic address allocation protocols such as DHCP. The address is likely not a legitimate IP address assigned by the Network Information Center (NIC) or service provider. Inside global address--A legitimate IP address assigned by the NIC or service provider that represents one or more inside local IP addresses to the outside world. Outside local address--The IP address of an outside host as it appears to the inside network. Not necessarily a legitimate address, it is allocated from an address space routable on the inside. Outside global address-- The IP address assigned to a host on the outside network by the host owner. The address is allocated from a globally routable address or network space. These definitions still leave a lot to be interpreted. For this example, this document redefines these terms by first defining local address and global address. Keep in mind that the terms inside and outside are NAT definitions. Interfaces on a NAT router are defined as inside or outside with the NAT configuration commands, ip nat inside destination and ip nat outside source . Networks to which these interfaces connect can then be thought of as inside networks or outside networks, respectively. Local address--A local address is any address that appears on the inside portion of the network. Global address--A global address is any address that appears on the outside portion of the network.

---

#### QUESTION 5

Refer to the exhibit.



The enterprise has decided to use the network address 172.16.0.0. The network administrator needs to design a classful addressing scheme to accommodate the three subnets, with 30, 40, and 50 hosts, as shown. What subnet mask would accommodate this network?

- A. 255.255.255.192
- B. 255.255.255.224
- C. 255.255.255.240
- D. 255.255.255.248
- E. 255.255.255.252

Correct Answer: A

Subnet mask A i.e. 255.255.255.192 with CIDR of /26 which means 64 hosts per subnet which are sufficient to accommodate even the largest subnet of 50 hosts.



Net Bits	Subnet Mask	Total-Address Per Subnet
/20	255.255.240.0	4096
/21	255.255.248.0	2048
/22	255.255.252.0	1024
/23	255.255.254.0	512
/24	255.255.255.0	256
/25	255.255.255.128	128
/26	255.255.255.192	64
/27	255.255.255.224	32
/28	255.255.255.240	16
/29	255.255.255.248	8
/30	255.255.255.252	4



[100-101 PDF Dumps](#)

[100-101 VCE Dumps](#)

[100-101 Exam Questions](#)



To Read the [Whole Q&As](#), please purchase the [Complete Version](#) from [Our website](#).

## Try our product !

100% Guaranteed Success

100% Money Back Guarantee

365 Days Free Update

Instant Download After Purchase

24x7 Customer Support

Average 99.9% Success Rate

More than 800,000 Satisfied Customers Worldwide

Multi-Platform capabilities - [Windows](#), [Mac](#), [Android](#), [iPhone](#), [iPod](#), [iPad](#), [Kindle](#)

We provide exam PDF and VCE of Cisco, Microsoft, IBM, CompTIA, Oracle and other IT Certifications. You can view Vendor list of All Certification Exams offered:

<https://www.pass4itsure.com/allproducts>

## Need Help

Please provide as much detail as possible so we can best assist you.

To update a previously submitted ticket:



 <b>One Year Free Update</b> <p>Free update is available within One Year after your purchase. After One Year, you will get 50% discounts for updating. And we are proud to boast a 24/7 efficient Customer Support system via Email.</p>	 <b>Money Back Guarantee</b> <p>To ensure that you are spending on quality products, we provide 100% money back guarantee for 30 days from the date of purchase.</p>	 <b>Security &amp; Privacy</b> <p>We respect customer privacy. We use McAfee's security service to provide you with utmost security for your personal information &amp; peace of mind.</p>
---	---	--

Any charges made through this site will appear as Global Simulators Limited.

All trademarks are the property of their respective owners.

Copyright © pass4itsure, All Rights Reserved.