



100-101^{Q&As}

CCNA Interconnecting Cisco Networking Devices 1 (ICND1)

Pass Cisco 100-101 Exam with 100% Guarantee

Free Download Real Questions & Answers **PDF** and **VCE** file from:

<https://www.pass4itsure.com/100-101.html>

100% Passing Guarantee
100% Money Back Assurance

Following Questions and Answers are all new published by Cisco
Official Exam Center

-  **Instant Download** After Purchase
-  **100% Money Back** Guarantee
-  **365 Days** Free Update
-  **800,000+** Satisfied Customers



**QUESTION 1**

How does a switch differ from a hub?

- A. A switch does not induce any latency into the frame transfer time.
- B. A switch tracks MAC addresses of directly-connected devices.
- C. A switch operates at a lower, more efficient layer of the OSI model.
- D. A switch decreases the number of broadcast domains.
- E. A switch decreases the number of collision domains.

Correct Answer: B

Some of the features and functions of a switch include:

A switch is essentially a fast, multi-port bridge, which can contain dozens of ports. Rather than creating two collision domains, each port creates its own collision domain. In a network of twenty nodes, twenty collision domains exist if each

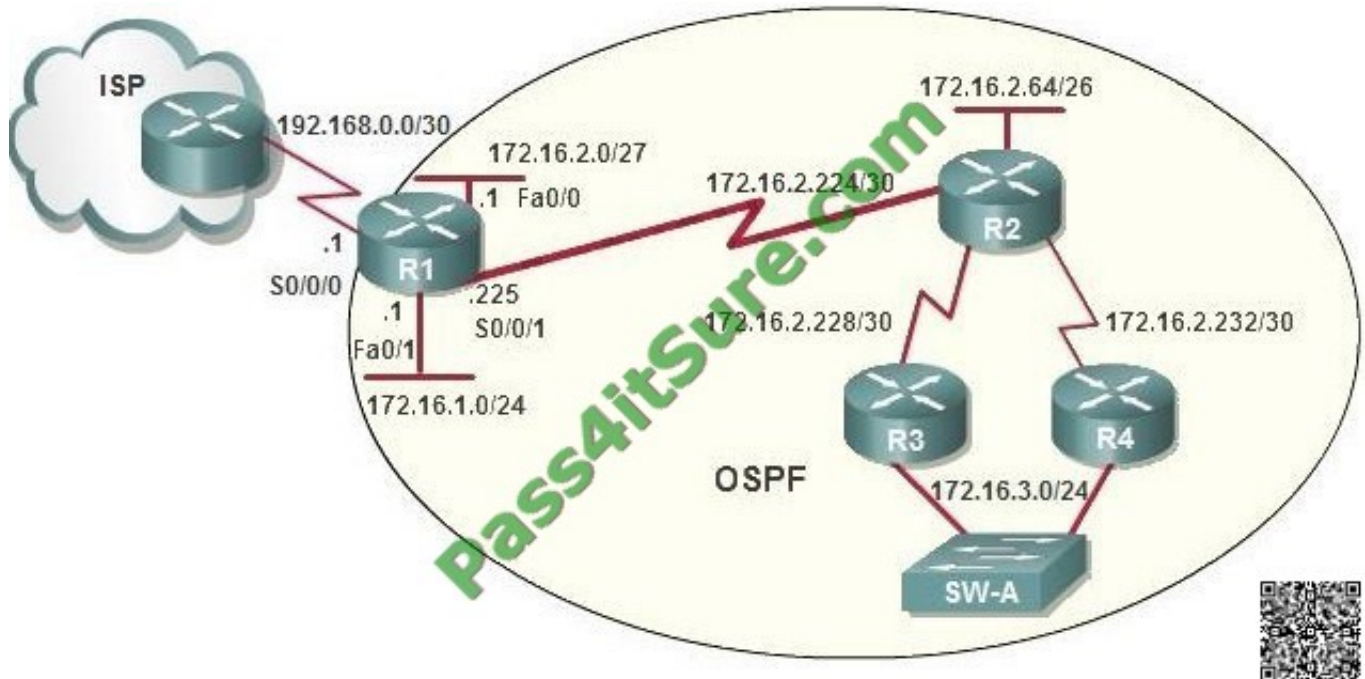
node is plugged into its own switch port. If an uplink port is included, one switch creates twenty-one single-node collision domains. A switch dynamically builds and maintains a Content-Addressable Memory (CAM) table, holding all of the

necessary MAC information for each port. For a detailed description of how switches operate, and their key differences to hubs, see the reference link below.

Reference. <http://www.cisco.com/warp/public/473/lan-switch-cisco.shtml>

QUESTION 2

OSPF is configured using default classful addressing. With all routers and interfaces operational, how many networks will be in the routing table of R1 that are indicated to be learned by OSPF?



- A. 2
- B. 3
- C. 4
- D. 5
- E. 6
- F. 7

Correct Answer: C

QUESTION 3

A company has placed a networked PC in a lobby so guests can have access to the corporate directory.

A security concern is that someone will disconnect the directory PC and re-connect their laptop computer and have access to the corporate network. For the port servicing the lobby, which three configuration steps should be performed on the switch to prevent this? (Choose three.)

- A. Enable port security.
- B. Create the port as a trunk port.
- C. Create the port as an access port.
- D. Create the port as a protected port.



- E. Set the port security aging time to 0.
- F. Statically assign the MAC address to the address table.
- G. Configure the switch to discover new MAC addresses after a set time of inactivity.

Correct Answer: ACF

If port security is enabled and the port is only designated as access port, and finally static MAC address is assigned, it ensures that even if a physical connection is done by taking out the directory PC and inserting personal laptop or device, the connection cannot be made to the corporate network, hence ensuring safety.

QUESTION 4



Instructions



For both the Router and the Switch the simulated console mode needs to start and remain in enabled mode.

RouterA and SwitchA have been configured to operate in a private network which will connect to the Internet. You have been asked to review the configuration prior to cabling and implementation.

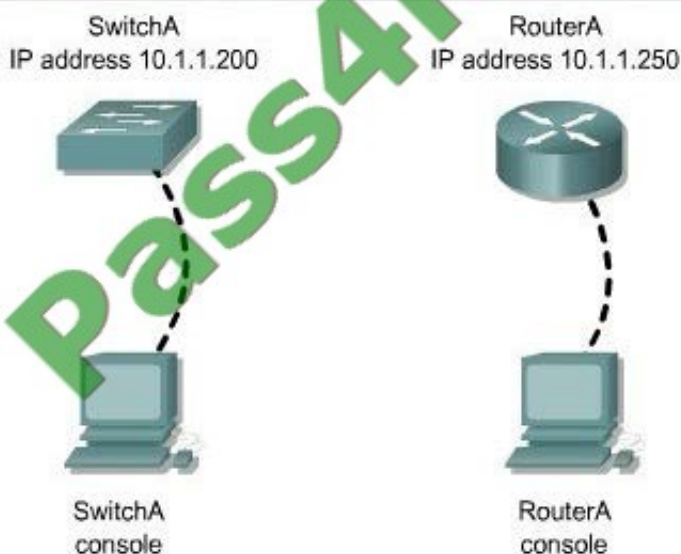
This task requires the use of various IOS commands to access and inspect the running configuration of RouterA and SwitchA. No configuration changes are necessary.

You will connect to RouterA and SwitchA via the console devices that are attached to each.

There are 4 multiple-choice questions with this task. Be sure to answer all of them before leaving this item. In order to score the maximum points you will need to have accessed both SwitchA and RouterA.

NOTE: The configuration command has been disabled for both the router and switch in this simulation.

Topology



Which of the following is true regarding the configuration of SwitchA?

- A. only 5 simultaneous remote connections are possible
- B. remote connections using ssh will require a username and password
- C. only connections from the local network will be possible
- D. console access to SwitchA requires a password



Correct Answer: B

Ssh login requires a user name and password always while other conditions may or may not be true.

QUESTION 5

What are two common TCP applications? (Choose two.)

- A. TFTP
- B. SMTP
- C. SNMP
- D. FTP
- E. DNS

Correct Answer: BD

SMTP uses TCP port 25, while FTP uses TCP ports 20 and 21. [http:// pentestlab.wordpress.com/2012/03/05/common-tcpip-ports/](http://pentestlab.wordpress.com/2012/03/05/common-tcpip-ports/)

[Latest 100-101 Dumps](#)

[100-101 PDF Dumps](#)

[100-101 Exam Questions](#)



To Read the [Whole Q&As](#), please purchase the [Complete Version](#) from [Our website](#).

Try our product !

100% Guaranteed Success

100% Money Back Guarantee

365 Days Free Update

Instant Download After Purchase

24x7 Customer Support

Average 99.9% Success Rate

More than 800,000 Satisfied Customers Worldwide

Multi-Platform capabilities - [Windows](#), [Mac](#), [Android](#), [iPhone](#), [iPod](#), [iPad](#), [Kindle](#)

We provide exam PDF and VCE of Cisco, Microsoft, IBM, CompTIA, Oracle and other IT Certifications. You can view Vendor list of All Certification Exams offered:

<https://www.pass4itsure.com/allproducts>

Need Help

Please provide as much detail as possible so we can best assist you.

To update a previously submitted ticket:



 <p>One Year Free Update Free update is available within One Year after your purchase. After One Year, you will get 50% discounts for updating. And we are proud to boast a 24/7 efficient Customer Support system via Email.</p>	 <p>Money Back Guarantee To ensure that you are spending on quality products, we provide 100% money back guarantee for 30 days from the date of purchase.</p>	 <p>Security & Privacy We respect customer privacy. We use McAfee's security service to provide you with utmost security for your personal information & peace of mind.</p>
---	---	--

Any charges made through this site will appear as Global Simulators Limited.

All trademarks are the property of their respective owners.

Copyright © pass4itsure, All Rights Reserved.