



030-333^{Q&As}

ACSM Exercise Specialist Exam

Pass ACSM 030-333 Exam with 100% Guarantee

Free Download Real Questions & Answers **PDF** and **VCE** file from:

<https://www.pass4itsure.com/030-333.html>

100% Passing Guarantee
100% Money Back Assurance

Following Questions and Answers are all new published by ACSM
Official Exam Center

-  **Instant Download** After Purchase
-  **100% Money Back** Guarantee
-  **365 Days** Free Update
-  **800,000+** Satisfied Customers



**QUESTION 1**

A client is walking on a treadmill at 3.4 mph and a 5% grade. What is her $\dot{V}O_2$ in relative terms?

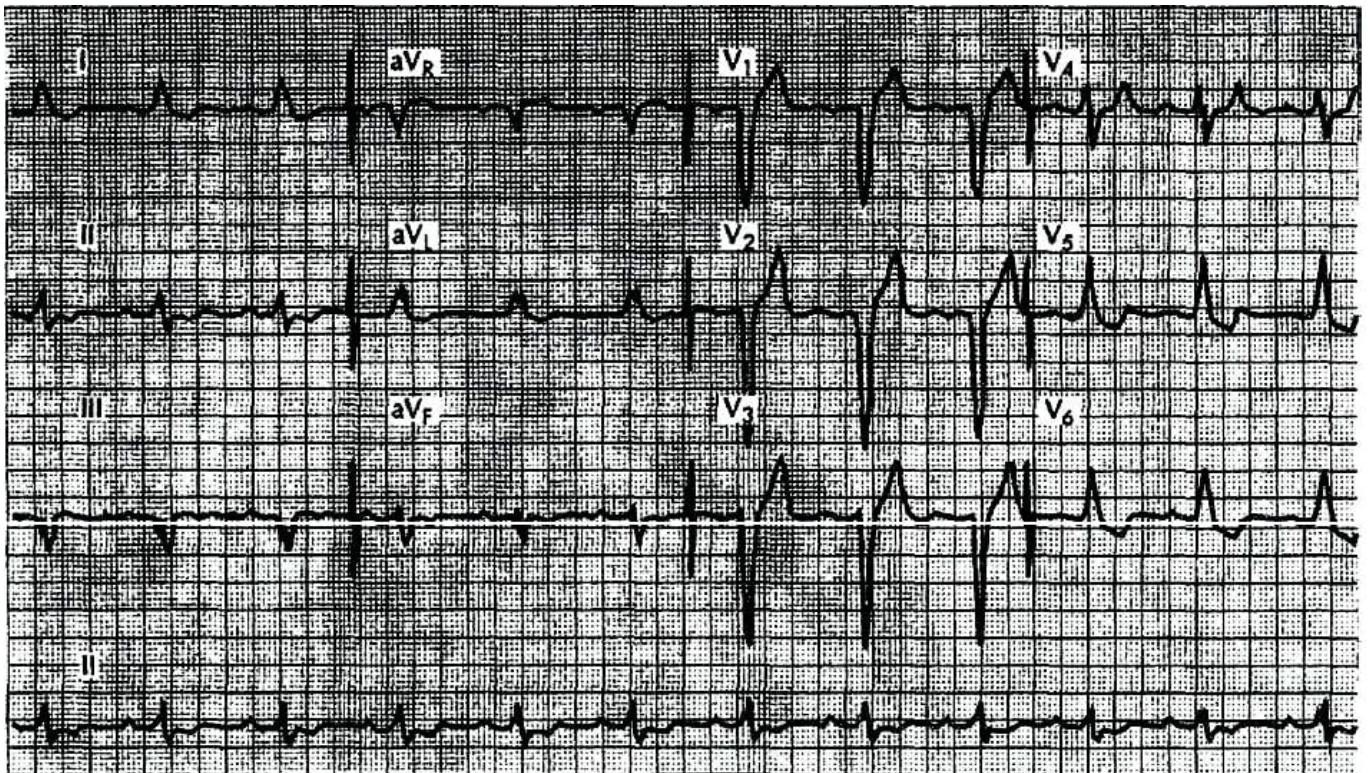
- A. $9.11 \text{ mL} \cdot \text{kg}^{-1} \cdot \text{min}^{-1}$
- B. $11.9 \text{ mL} \cdot \text{kg}^{-1} \cdot \text{min}^{-1}$
- C. $24 \text{ mL} \cdot \text{kg}^{-1} \cdot \text{min}^{-1}$
- D. $20.81 \text{ mL} \cdot \text{kg}^{-1} \cdot \text{min}^{-1}$

A. B. C. D.

Correct Answer: D

QUESTION 2

In the ECG shown on the following page, which of the following conduction abnormalities is indicated?





- A. RBBB.
- B. Third-degree AV block.
- C. First-degree AV block.
- D. Mobitz I.

Correct Answer: C

QUESTION 3

Osteoporosis is more prevalent in:

- A. Women who have never been pregnant.
- B. African-American women.
- C. Women who are involved in activities that place stress on the wrists, hips, or lumbar sacral region.
- D. Postmenopausal women.

Correct Answer: D

QUESTION 4

Capital budgets:

- A. Reflect the costs of implementing a program.
- B. Reflect the costs to operate a program.
- C. Are not necessary with fitness programs.
- D. Are part of the balance sheet in financial reports.

Correct Answer: A

QUESTION 5

Which of the following is a restrictive lung disease?

- A. Asthma.
- B. Tuberculosis.
- C. Cystic fibrosis.
- D. Emphysema.

Correct Answer: B



VCE & PDF

Pass4itSure.com

<https://www.pass4itsure.com/030-333.html>

2024 Latest pass4itsure 030-333 PDF and VCE dumps Download

[Latest 030-333 Dumps](#)

[030-333 PDF Dumps](#)

[030-333 Practice Test](#)