



70-412^{Q&As}

Configuring Advanced Windows Server 2012 Services

Pass Microsoft 70-412 Exam with 100% Guarantee

Free Download Real Questions & Answers **PDF** and **VCE** file from:

<https://www.pass4itsure.com/70-412.html>

100% Passing Guarantee
100% Money Back Assurance

Following Questions and Answers are all new published by Microsoft
Official Exam Center

-  **Instant Download** After Purchase
-  **100% Money Back** Guarantee
-  **365 Days** Free Update
-  **800,000+** Satisfied Customers



**QUESTION 1**

Your network contains an Active Directory domain named contoso.com.

All domain controllers run Windows Server 2012. One of the domain controllers is named DC1.

The DNS zone for the contoso.com zone is Active Directory-integrated and has the default settings.

A server named Server1 is a DNS server that runs a UNIX-based operating system.

You plan to use Server1 as a secondary DNS server for the contoso.com zone.

You need to ensure that Server1 can host a secondary copy of the contoso.com zone.

What should you do?

- A. From Windows PowerShell, run the Set-DnsServerForwarder cmdlet and specify the contoso.com zone as a target.
- B. From Windows PowerShell, run the Set-DnsServerSetting cmdlet and specify DC1 as a target.
- C. From Windows PowerShell, run the Set-DnsServerPrimaryZone cmdlet and specify the contoso.com zone as a target.
- D. From DNS Manager, modify the Advanced settings of DC1.

Correct Answer: C

C. The Set-DnsServerSecondaryZone cmdlet changes settings for an existing secondary zone on a Domain Name System (DNS) server. [http://technet.microsoft.com/en-us/library/jj649920\(v=wps.620\).aspx](http://technet.microsoft.com/en-us/library/jj649920(v=wps.620).aspx)

QUESTION 2

You have a server that runs Windows Server 2012 R2.

You create a new work folder named Share1.

You need to configure Share1 to meet the following requirements:

Ensure that all synchronized copies of Share1 are encrypted.

Ensure that clients synchronize to Share1 every 30 minutes.

Ensure that Share1 inherits the NTFS permissions of the parent folder.

Which cmdlet should you use to achieve each requirement?

To answer, drag the appropriate cmdlets to the correct requirements. Each cmdlet may be used once, more than once, or not at all. You may need to drag the split bar between panes or scroll to view content.

Select and Place:



Cmdlets	Answer Area
Enable-SyncShare	Ensure that all synchronized copies of Share1 are encrypted. <input type="text" value="Cmdlet"/>
New-SyncDevicePolicy	Ensure that clients synchronize to Share1 every 30 minutes. <input type="text" value="Cmdlet"/>
New-SyncShare	Ensure that Share1 inherits the NTFS permissions of the parent folder. <input type="text" value="Cmdlet"/>
Set-SyncDevicePolicy	
Set-SyncServerSettings	
Set-SyncShare	

Correct Answer:

Cmdlets	Answer Area
Enable-SyncShare	Ensure that all synchronized copies of Share1 are encrypted. <input type="text" value="Set-SyncShare"/>
New-SyncDevicePolicy	Ensure that clients synchronize to Share1 every 30 minutes. <input type="text" value="Set-SyncServerSettings"/>
New-SyncShare	Ensure that Share1 inherits the NTFS permissions of the parent folder. <input type="text" value="Set-SyncShare"/>
Set-SyncDevicePolicy	
Set-SyncServerSettings	
Set-SyncShare	

* (box 1) Set-SyncShare

The Set-SyncShare cmdlet modifies the settings for a sync share.

/ parameter: -RequireEncryption

Indicates whether the sync server requests that the contents of Work Folders be encrypted on each PC and device that accesses the sync share.

* (box 2) Set-SyncServerSettings

Parameter: -MinimumChangeDetectionMins

Specifies the time, in minutes, before the Sync Share server detects changes on devices and syncs the client and server.

* (box 3): Example: Modify a sync share to enable inherited permissions

This command modifies settings on the share named Share01, and sets

KeepParentFolderPermission to enable the share to inherit permissions from the parent folder.



Windows PowerShell

```
PS C:\> Set-SyncShare Share01 -KeepParentFolderPermission
```

Reference: Set-SyncShare; Set-SyncServerSettings

QUESTION 3

Your network contains an Active Directory domain named contoso.com.

The domain contains two domain controllers named DC1 and DC2.

You install Windows Server 2012 R2 on a new computer named DC3.

You need to manually configure DC3 as a domain controller.

Which tool should you use?

- A. winrm.exe
- B. Server Manager
- C. dcpromo.exe
- D. Active Directory Domains and Trusts

Correct Answer: B

When you try to DCPromo a Server 2012, you get this message:



QUESTION 4

Your network contains an Active Directory domain named contoso.com.



The domain contains client computers that run either Windows XP, Windows 7, or Windows 8.

Network Policy Server (NPS) is deployed to the domain.

You plan to create a system health validator (SHV).

You need to identify which policy settings can be Applied to all of the computers.

Which three policy settings should you identify? (Each correct answer presents part of the solution.

Choose three.)

A. A firewall is enabled for all network connections.

B. An antispysware application is on.

C. Automatic updating is enabled.

D. Antivirus is up to date.

E. Antispyware is up to date.

Correct Answer: ACD

*

System health agent (SHA) is a NAP component.

*

System health agent (SHA)

A component that checks the state of the client computer to determinewhether the settings monitored by the SHA are up-to-date and configured correctly. For example, the Windows Security Health Agent (WSHA) can monitor Windows

Firewall, whether antivirus software is installed, enabled, and updated, whether antispyware software is installed, enabled, and updated, and whether Microsoft Update Services is enabled and the computer has the most recent security

updates from Microsoft Update Services.

There might also be SHAs (and corresponding system health validators) available from other companies that provide different functionality.

QUESTION 5

Which permission should you assign on a CA to a group of users that you want to allow to alter the list of recovery agents?

A. Read

B. Issue And Manage Certificates

C. Manage CA



D. Request Certificates.

Correct Answer: C

QUESTION 6

Your network contains one Active Directory domain. The domain contains two Hyper-V hosts named Host1 and Host2 that run Windows Server 2012 R2. Host1 contains a virtual machine named DC5. DC5 is a domain controller that runs Windows Server 2012 R2.

You configure Active Directory to support domain controller cloning for DC5, and then you shut down DC5.

You need to create a clone of DC5 on Host2.

What should you run on each Hyper-V host? To answer, drag the appropriate commands or cmdlets to the correct Hyper-v hosts. Each command or cmdlet may be used once, more than once, or not at all. You may need to drag the split bar

between panes or scroll to view

content.

Select and Place:

Commands and Cmdlets

- Export-VM
- Import-VM
- Move-VM
- New-ADDCCloneConfigFile
- New-VirtualDiskClone
- sysprep.exe

Answer Area

- Host1:
- Host2:

Correct Answer:



Commands and Cmdlets

Empty text box

Empty text box

Move-VM

New-ADDCCloneConfigFile

New-VirtualDiskClone

sysprep.exe

Answer Area

Host1: Export-VM

Host2: Import-VM

Use import and export feature, when you want to create a new virtual machine with the same configuration of an existing machine in Hyper-V.

The Export-VM cmdlet exports a virtual machine to disk.

The Import-VM cmdlet imports a virtual machine from a file.

References: Overview of exporting and importing a virtual machine

<https://technet.microsoft.com/en-us/library/hh831535.aspx>

QUESTION 7

Your network contains an Active Directory forest named adatum.com. The forest contains one domain. The domain contains the domain controllers shown in the following table.

Name	Site
DC1	Site1
DC2	Site2
RODC1	Site3
RODC2	Site4

You verify the site links as shown in the following output.



```
Cost : 100
DistinguishedName : CN=Link1,CN=IP,CN=Inter-Site Transports,CN=Sites,
                  CN=Configuration,DC=Adatum,DC=com
Name : Link1
ObjectClass : SiteLink
ObjectGUID : dcl1a7b85-9260-4b58-a252-c42745c16652
ReplicationFrequencyInMinutes : 60
SitesIncluded : {CN=Site2,CN=Sites,CN=configuration,DC=Adatum,DC=com,
                CN=Site1,CN=Sites,CN=configuration,DC=Adatum,DC=com}

Cost : 1000
DistinguishedName : CN=Link2,CN=IP,CN=Inter-Site Transports,CN=Sites,
                  CN=Configuration,DC=Adatum,DC=com
Name : Link2
ObjectClass : SiteLink
ObjectGUID : bf6e7df6-e2e5-4dfd-9eab-2b8f76acb96c
ReplicationFrequencyInMinutes : 360
SitesIncluded : {CN=Site4,CN=Sites,CN=configuration,DC=Adatum,DC=com,
                CN=Site3,CN=Sites,CN=configuration,DC=Adatum,DC=com}
```

You need to ensure that User1 replicates to all the domain controllers. What should you do?

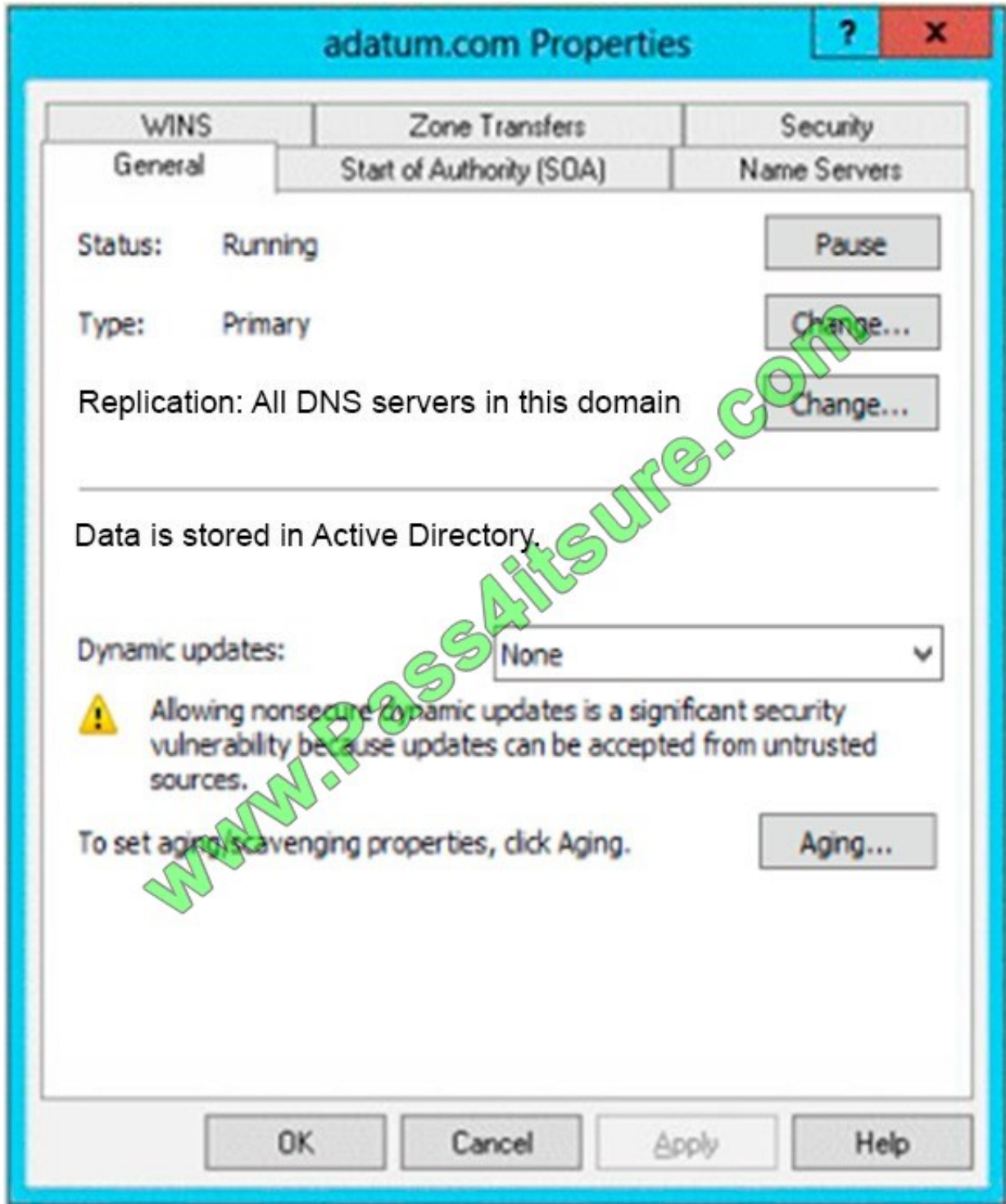
- A. Enable the Bridge all site links option.
- B. Decrease the Cost value on Link2.
- C. Add Site3 to Link1.
- D. Run repadmin /synca11/A on DC1.

Correct Answer: A

QUESTION 8

Your network contains an Active Directory domain named contoso.com. The domain contains a domain controller named DC1 that runs Windows Server 2012 R2. DC1 has the DNS Server server role installed.

The network contains client computers that run either Linux, Windows 7, or Windows 8.1. You have a zone named adatum.com as shown in the exhibit. (Click the Exhibit button.)



You plan to configure Name Protection on all of the DHCP servers.

You need to configure the adatum.com zone to support Name Protection.

What should you do?

- A. Add a DNSKEY record.
- B. Configure Dynamic updates.



- C. Sign the zone.
- D. Change the zone type.

Correct Answer: B

References: [https://technet.microsoft.com/en-us/library/ee941152\(v=ws.10\).aspx](https://technet.microsoft.com/en-us/library/ee941152(v=ws.10).aspx)

QUESTION 9

Your network contains an Active Directory domain named contoso.com. The domain contains a server named Server1 that runs Windows Server 2012 R2. Server1 has an enterprise root certification authority (CA) for contoso.com.

You deploy another member server named Server2 that runs Windows Server 2012 R2 and has the Web Server (IIS) server role installed.

You need to designate a website on Server1 as the certificate revocation list (CRL) distribution point for the CA. The solution must ensure that CRLs are published automatically to Server2.

Which two actions should you perform? (Each correct answer presents part of the solution. Choose two.)

- A. Create an http:// CRL distribution point (CDP) entry.
- B. Configure a CA exit module.
- C. Create a file:// CRL distribution point (CDP) entry.
- D. Configure a CA policy module.
- E. Configure an enrollment agent.

Correct Answer: AD

- A. To specify CRL distribution points in issued certificates

Open the Certification Authority snap-in.

In the console tree, click the name of the CA.

On the Action menu, click Properties, and then click the Extensions tab. Confirm that Select extension is set to CRL Distribution Point (CDP).

Do one or more of the following. (The list of CRL distribution points is in the Specify locations from which users can obtain a certificate revocation list (CRL) box.)

To indicate that you want to use a URL as a CRL distribution point

Click the CRL distribution point, select the Include in the CDP extension of issued certificates check box, and then click OK.

Click Yes to stop and restart Active Directory Certificate Services (AD CS).

D. You can specify CRL Distribution Points (CDPs) in CAPolicy.inf. Note that any CDP in CAPolicy.inf will take precedence for certificate verifiers over the CDP\\'s specified in the CA policy module.



Note: CRLDistributionPoint

You can specify CRL Distribution Points (CDPs) for a root CA certificate in the CAPolicy.inf. This section does not configure the CDP for the CA itself. After the CA has been installed you can configure the CDP URLs that the CA will include in each certificate that it issues. The URLs specified in this section of the CAPolicy.inf file are included in the root CA certificate itself.

Example:

[CRLDistributionPoint]

URL=http://pki.wingtiptoy.com/cdp/WingtipToysRootCA.crl

QUESTION 10

You are configuring AD FS. Which server should you deploy on your organization's perimeter network?

- A. Web application proxy
- B. Relying-party server
- C. Federation server
- D. Claims-provider server

Correct Answer: A

QUESTION 11

Your network contains two Web servers named Server1 and Server2. Both servers run Windows Server 2012 R2.

Server1 and Server2 are nodes in a Network Load Balancing (NLB) cluster. The NLB cluster contains an application named App1 that is accessed by using the URL <http://app1.contoso.com>. You plan to perform maintenance on Server1.

You need to ensure that all new connections to App1 are directed to Server2. The solution must not disconnect the existing connections to Server1. What should you run?

- A. The Set-NlbCluster cmdlet
- B. The Set-NlbClusterNode cmdlet
- C. The Stop-NlbCluster cmdlet
- D. The Stop-NlbClusterNode cmdlet
- E. The Suspend-NlbClusterNode cmdlet
- F. The nlb.exe suspend command

Correct Answer: D

The Stop-NlbClusterNode cmdlet stops a node in an NLB cluster. When you use the stop the nodes in the cluster, client connections that are already in progress are interrupted. To avoid interrupting active connections, consider using the



drain parameter, which allows the node to continue servicing active connections but disables all new traffic to that node.

-Drain

Drains existing traffic before stopping the cluster node. If this parameter is omitted, existing traffic will be dropped.

References: Stop-NlbClusterNode

QUESTION 12

Your network contains an Active Directory domain named contoso.com. All servers run Windows Server 2012 R2.

The domain contains a domain controller named DC1 that is configured as an enterprise root certification authority (CA).

All users in the domain are issued a smart card and are required to log on to their domain-joined client computer by using their smart card.

A user named User1 resigned and started to work for a competing company.

You need to prevent User1 immediately from logging on to any computer in the domain.

The solution must not prevent other users from logging on to the domain.

Which tool should you use?

- A. Active Directory Users and Computers
- B. Active Directory Sites and Services
- C. The Certificates snap-in
- D. Server Manager

Correct Answer: A

Disabling or enabling a user account

To open Active Directory Users and Computers, click Start, click Control Panel, double-click Administrative Tools, and then double-click Active Directory Users and Computers.

To open Active Directory Users and Computers in Windows Server 2012, click Start, type dsa.msc.

In the console tree, click Users.

In the details pane, right-click the user.

Depending on the status of the account, do one of the following:

To disable the account, click Disable Account.

To enable the account, click Enable Account.

References: <https://www.pcwld.com/active-directory-users-computers-not-showing-administrative-tools>



QUESTION 13

Your network contains one Active Directory domain named contoso.com. The domain contains three users named User1, User2, and User3. You need to ensure that the users can log on to the domain by using the user principal names (UPNs) shown in the following table.

User	UPN
User1	user1@adatum.com
User2	user2@litwareinc.com
User3	user3@treymresearch.net

What should you use?

- A. the Set-ADDomain cmdlet
- B. the Add-DNSServerSecondaryZone cmdlet
- C. the Setspn command
- D. the Set-ADUser cmdlet

Correct Answer: D

The Set-ADUser cmdlet modifies the properties of an Active Directory user. You can modify commonly used property values by using the cmdlet parameters. Parameters include: UserPrincipalName Each user account has a user principal name (UPN) in the format @. A UPN is a friendly name assigned by an administrator that is shorter than the LDAP distinguished name used by the system and easier to remember. The UPN is independent of the user object's DN, so a user object can be moved or renamed without affecting the user logon name. When logging on using a UPN, users no longer have to choose a domain from a list on the logon dialog box.

Incorrect Answers:

A: The Set-ADDomain cmdlet modifies the properties of an Active Directory domain. You can modify commonly used property values by using the cmdlet parameters.

B: The Add-DnsServerSecondaryZone cmdlet adds a specified secondary zone on a Domain Name System (DNS) server.

C: Setspn reads, modifies, and deletes the Service Principal Names (SPN) directory property for an Active Directory service account. You use SPNs to locate a target principal name for running a service. You can use setspn to view the current SPNs, reset the account's default SPNs, and add or delete supplemental SPNs.

Reference: Technet, Set-ADUser <https://technet.microsoft.com/en-us/library/ee617215.aspx>

QUESTION 14

Your network contains an Active Directory forest named adatum.com. The forest contains one domain. The forest contains three sites named Site1, Site2, Site3, and Site4. The site links are shown in the following output.



```
Cost : 10
DistinguishedName : CN=S1-S2,CN=IP,CN=Inter-Site Transports,CN=Sites,CN=Configuration,DC=Adatum,DC=com
Name : S1-S2
ObjectClass : siteLink
ObjectGUID : dcl1a7b85-9260-4b58-a252-c42745c166652
ReplicationFrequencyInMinutes : 15
SitesIncluded : {CN=Site2,CN=Sites,CN=Configuration,DC=Adatum,DC=com,
                CN=Site1,CN=Sites,CN=Configuration,DC=Adatum,DC=com}

Cost : 80
DistinguishedName : CN=S1-S4,CN=IP,CN=Inter-Site Transports,CN=Sites,CN=Configuration,DC=Adatum,DC=com
Name : S1-S4
ObjectClass : siteLink
ObjectGUID : 1950750f-2c-90-40ed-8aec-923370dc9c45
ReplicationFrequencyInMinutes: 15
SitesIncluded : {CN=Site4,CN=Sites,CN=Configuration,DC=Adatum,DC=com,
                CN=Site1,CN=Sites,CN=Configuration,DC=Adatum,DC=com}

Cost : 20
DistinguishedName : CN=S2-S3,CN=IP,CN=Inter-Site transports,CN=Sites,CN=Configuration,DC=Adatum,DC=com
Name : S2-S3
ObjectClass : siteLink
ObjectGUID : bf6e7df6-e2e5-4dfd-9eab-2b8f76acb96c
ReplicationFrequencyInMinutes: 30
SitesIncluded : {CN=Site3,CN=Sites,CN=Configuration,DC=Adatum,DC=com,
                CN=Site2,CN=Sites,CN=Configuration,DC=Adatum,DC=com}

Cost : 30
DistinguishedName : CN=S3-S4,CN=IP,CN=Inter-Site Transports,CN=Sites,CN=Configuration,DC=Adatum,DC=com
Name : S3-S4
ObjectClass : siteLink
ObjectGUID : e06d59d9-6057-46bd-8c05-dbfa273bb938
ReplicationFrequencyInMinutes: 45
SitesIncluded : {CN=Site4,CN=Sites,CN=Configuration,DC=Adatum,DC=com,
```

In Site1, you create a user named User1.

What is the minimum number of minutes required for User1 to replicate to a domain controller in Site4?

- A. 90
- B. 45
- C. 105
- D. 15

Correct Answer: B

QUESTION 15

You have a server named SCI that runs a Server Core Installation of Windows Server 2012 R2. Shadow copies are enabled on all volumes.

You need to delete a specific shadow copy. The solution must minimize server downtime.



Which tool should you use?

- A. Shadow
- B. Diskshadow
- C. Wbadmin
- D. Diskpart

Correct Answer: B

DiskShadow.exe is a tool that exposes the functionality offered by the Volume Shadow Copy Service (VSS). The diskshadow command delete shadows deletes shadow copies.

Parameter	Description
all	Deletes all shadow copies.
volume <Volume>	Deletes all shadow copies of the given volume.
oldest <Volume>	Deletes the oldest shadow copy of the given volume.
set <SetID>	Deletes the shadow copies in the Shadow Copy Set of the given ID. You can specify an alias if an alias exists in the current environment.
id <ShadowID>	Deletes a shadow copy of the given ID. You can specify an alias by using the % symbol if the environment.
exposed {<Drive> <MountPoint>}	Deletes the shadow copy exposed at the specified drive letter or mount point. Specify mount point by the drive letter such as p:.

References: Technet, Diskshadow <https://docs.microsoft.com/en-us/windows-server/administration/windows-commands/diskshadow>

[70-412 Study Guide](#)

[70-412 Exam Questions](#)

[70-412 Braindumps](#)



To Read the [Whole Q&As](#), please purchase the [Complete Version](#) from [Our website](#).

Try our product !

100% Guaranteed Success

100% Money Back Guarantee

365 Days Free Update

Instant Download After Purchase

24x7 Customer Support

Average 99.9% Success Rate

More than 800,000 Satisfied Customers Worldwide

Multi-Platform capabilities - [Windows](#), [Mac](#), [Android](#), [iPhone](#), [iPod](#), [iPad](#), [Kindle](#)

We provide exam PDF and VCE of Cisco, Microsoft, IBM, CompTIA, Oracle and other IT Certifications. You can view Vendor list of All Certification Exams offered:

<https://www.pass4itsure.com/allproducts>

Need Help

Please provide as much detail as possible so we can best assist you.

To update a previously submitted ticket:



 <p>One Year Free Update Free update is available within One Year after your purchase. After One Year, you will get 50% discounts for updating. And we are proud to boast a 24/7 efficient Customer Support system via Email.</p>	 <p>Money Back Guarantee To ensure that you are spending on quality products, we provide 100% money back guarantee for 30 days from the date of purchase.</p>	 <p>Security & Privacy We respect customer privacy. We use McAfee's security service to provide you with utmost security for your personal information & peace of mind.</p>
---	---	--

Any charges made through this site will appear as Global Simulators Limited.

All trademarks are the property of their respective owners.

Copyright © pass4itsure, All Rights Reserved.