



# 70-243<sup>Q&As</sup>

Administering and Deploying System Center 2012 Configuration Manager

**Pass Microsoft 70-243 Exam with 100% Guarantee**

Free Download Real Questions & Answers **PDF** and **VCE** file from:

<https://www.pass4itsure.com/70-243.html>

100% Passing Guarantee  
100% Money Back Assurance

Following Questions and Answers are all new published by Microsoft Official Exam Center

-  **Instant Download** After Purchase
-  **100% Money Back** Guarantee
-  **365 Days** Free Update
-  **800,000+** Satisfied Customers





## QUESTION 1

### HOTSPOT

You have a System Center 2012 R2 Configuration Manager Service Pack 1 (SP1) deployment.

You are creating a custom security role named Role1.

You need to ensure that users to whom Role1 is assigned can create and deploy configuration baselines.

Which two permissions should you modify for Role1? To answer, select the appropriate permissions in the answer area.

Hot Area:

Specify details for the customized copy of the selected security role.

Name:

Description:

Based on:

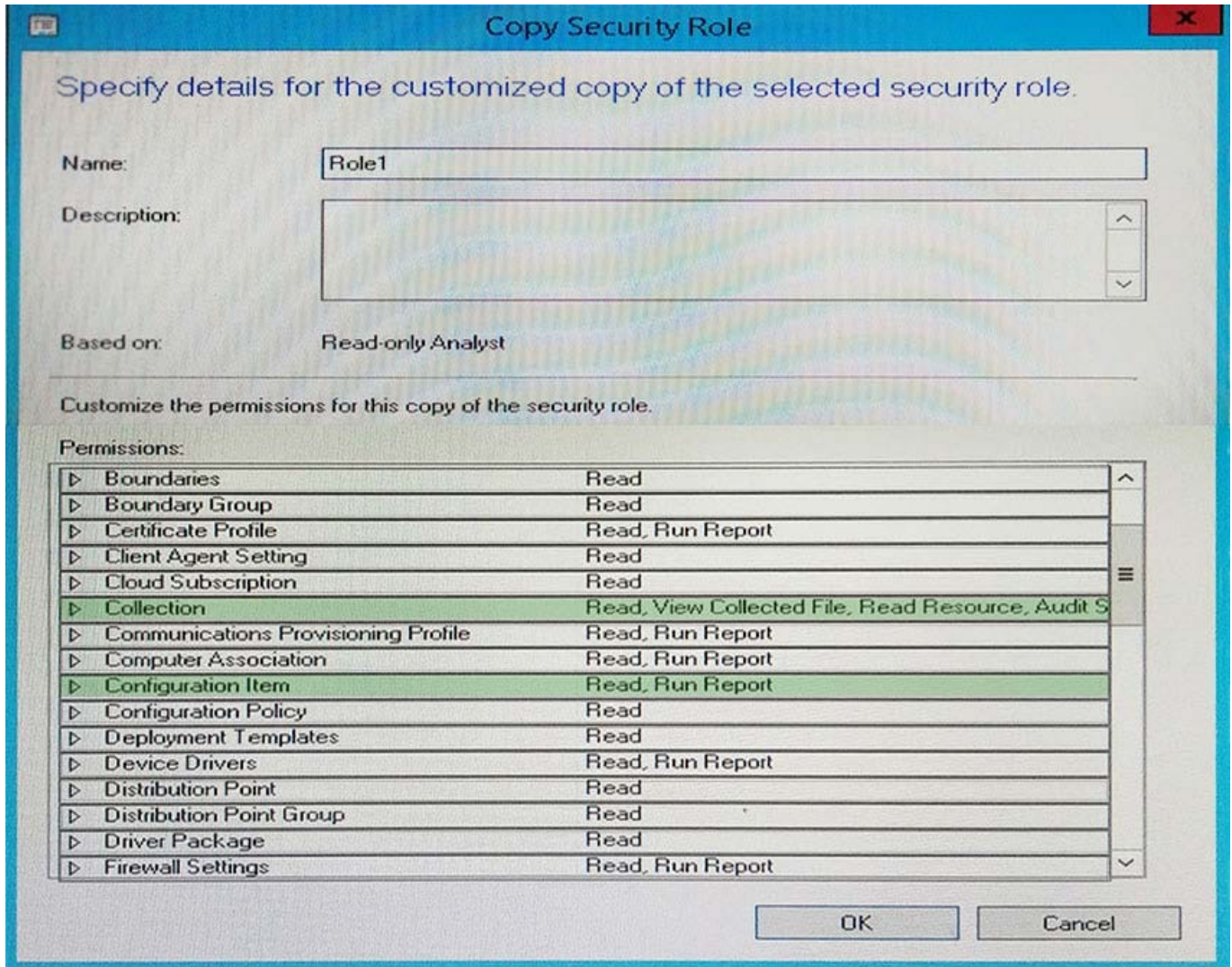
Customize the permissions for this copy of the security role.

Permissions:

▶ Boundaries	Read
▶ Boundary Group	Read
▶ Certificate Profile	Read, Run Report
▶ Client Agent Setting	Read
▶ Cloud Subscription	Read
▶ Collection	Read, View Collected File, Read Resource, Audit S
▶ Communications Provisioning Profile	Read, Run Report
▶ Computer Association	Read, Run Report
▶ Configuration Item	Read, Run Report
▶ Configuration Policy	Read
▶ Deployment Templates	Read
▶ Device Drivers	Read, Run Report
▶ Distribution Point	Read
▶ Distribution Point Group	Read
▶ Driver Package	Read
▶ Firewall Settings	Read, Run Report

OK Cancel

Correct Answer:



## QUESTION 2

### DRAG DROP

Your network contains a System Center 2012 R2 Configuration Manager Service Pack 1 (SP1) environment.

You need to create a collection that excludes all of the client computers that have Microsoft Office 2013 installed.

Which four actions should you perform in sequence to create the query for the collection?

To answer, move the appropriate actions from the list of actions to the answer area and arrange them in the correct order.

Select and Place:



**Actions**

**Answer Area**

- Select **is not** as the Operator.
- Display the estimated execution plan.
- Browse to the new query and select the query
- Create a query-based collection that uses the Sub Selected values option.
- Create a query that returns all of the client computers that have Office 2013 installed.
- Modify the query to use only indexed tables that are returned by the estimated execution plan.



Correct Answer:

**Actions**

**Answer Area**

- 
- Display the estimated execution plan.
- 
- 
- 
- Modify the query to use only indexed tables that are returned by the estimated execution plan.



- Create a query-based collection that uses the Sub Selected values option.
- Create a query that returns all of the client computers that have Office 2013 installed.
- Browse to the new query and select the query
- Select **is not** as the Operator.



**QUESTION 3**

**HOTSPOT**

You have a System Center 2012 R2 Configuration Manager Service Pack 1 (SP1) deployment.

You need to build a task sequence to create a VHD that contains a deployment of Windows 8.1.

What should be the first and last action of the task sequence? To answer, select the appropriate options in the answer area.

Hot Area:



## Answer Area

First task:

	▼
Capture User State	
Prepare ConfigMgr Client for Capture	
Prepare Windows for Capture	
Restart Computer	
Set Task Sequence Variable	

Last task:

	▼
Capture Operating System Image	
Restore User State	
Run Command Line	
Setup Windows and ConfigMgr	

Correct Answer:

## Answer Area

First task:

	▼
Capture User State	
Prepare ConfigMgr Client for Capture	
Prepare Windows for Capture	
Restart Computer	
Set Task Sequence Variable	

Last task:

	▼
Capture Operating System Image	
Restore User State	
Run Command Line	
Setup Windows and ConfigMgr	

Box 1: Prepare configmgr for capture This task sequence step takes the Configuration Manager 2007 client on the reference computer and prepares it for capture as part of the imaging process Box 2: Use the Capture Operating System Image task sequence step to capture one or more images from a reference computer and store them in a WIM file on the specified network share

References: <https://technet.microsoft.com/en-us/library/gg682199.aspx>  
[https://technet.microsoft.com/enus/library/hh846237.aspx#BKMK\\_PrepareConfigMgrClientforCapture](https://technet.microsoft.com/enus/library/hh846237.aspx#BKMK_PrepareConfigMgrClientforCapture)  
[https://technet.microsoft.com/enus/library/hh846237.aspx#BKMK\\_CaptureOperatingSystemImage](https://technet.microsoft.com/enus/library/hh846237.aspx#BKMK_CaptureOperatingSystemImage)

## QUESTION 4

### HOTSPOT

You have an Active Directory domain named contoso.com. The domain contains three servers named Server1, Server2, and Server3 that run Windows Server 2012 R2. Server1 is a System Center 2012 R2 Configuration Manager Service

Pack 1 (SP1) primary site server.



You plan to install a primary site on Server2.

You need to ensure that Configuration Manager is managed centrally. The solution must minimize administrative effort.

What should you do before you deploy the primary site to Server2? To answer, select the appropriate options in the answer area.

Hot Area:

## Answer Area

Component to install on Server3:

	▼
The Central Administration site	
The primary site	
The secondary site	

Component to remove from Server1:

	▼
Configuration Manager 2012 R2 Service Pack 1 (SP1)	
A distribution point	
An Endpoint Protection point	
A management point	

Correct Answer:

## Answer Area

Component to install on Server3:

	▼
The Central Administration site	
The primary site	
The secondary site	

Component to remove from Server1:

	▼
Configuration Manager 2012 R2 Service Pack 1 (SP1)	
A distribution point	
An Endpoint Protection point	
A management point	

### QUESTION 5

HOTSPOT



You plan to deploy a System Center 2012 R2 Configuration Manager Service Pack 1 (SP1) stand-alone primary site. The site will use a Microsoft SQL Server 2014 database server.

You need to recommend a high-availability solution to ensure that the site is available if SQL Server or management point fails.

What should you recommend? To answer, select the appropriate options in the answer area.

Hot Area:

### Answer Area

SQL Server 2014:

	▼
A single instance on a failover cluster	
Two instances that are replicated by using Always On	
Two instances that are replicated by using database mirroring	
Multiple instances that are replicated by using SQL Server replication	

Management point:

	▼
Two management points	
One management point that uses a database replica	
A single instance of the Management Point role on a failover cluster	
Two Configuration Manager sites that each have one management point	

Correct Answer:

### Answer Area

SQL Server 2014:

	▼
A single instance on a failover cluster	
Two instances that are replicated by using Always On	
Two instances that are replicated by using database mirroring	
Multiple instances that are replicated by using SQL Server replication	

Management point:

	▼
Two management points	
One management point that uses a database replica	
A single instance of the Management Point role on a failover cluster	
Two Configuration Manager sites that each have one management point	



## Answer Area

SQL Server 2014:

- A single instance on a failover cluster
- Two instances that are replicated by using Always On
- Two instances that are replicated by using database mirroring
- Multiple instances that are replicated by using SQL Server replication

Management point:

- Two management points
- One management point that uses a database replica
- A single instance of the Management Point role on a failover cluster
- Two Configuration Manager sites that each have one management point

Box 1: As part of the SQL Server Always On offering, Always On Failover Cluster Instances leverages Windows Server Failover Clustering (WSFC) functionality to provide local high availability through redundancy at the server-instance level

—a failover cluster instance (FCI).

When there is hardware or software failure of a server, the applications or clients connecting to the server will experience downtime. When a SQL Server instance is configured to be an FCI (instead of a standalone instance), the high

availability of that SQL Server instance is protected by the presence of redundant nodes in the FCI.

Box 2: When you install multiple instances of critical site system roles such as the management point and distribution point, you provide redundant points of contact for clients in the event that a specific site system server is off-line.

References:

<https://msdn.microsoft.com/en-us/library/ms189134.aspx>

<https://technet.microsoft.com/en-us/library/hh846246.aspx>

## QUESTION 6

DRAG DROP

Your network contains a System Center 2012 Configuration Manager environment. Three users named User1, User2, and User3 will perform the following tasks:

- User1 will review software metering data and inventory reports.
- User2 will deploy Applications and create alerts.
- User3 will create configuration items.





You need to identify which security role must be assigned to which user.

What should you identify?

To answer, drag the appropriate security role to the correct user in the answer area. Each security role may be used once, more than once, or not at all. Additionally, you may need to drag the split bar between panes or scroll to view content.

Select and Place:

Security Role	Answer Area
Application Administrator	User1 Security role
Application Deployment Manager	User2 Security role
Asset Manager	User3 Security role

Correct Answer:

Security Role	Answer Area
	User1 Asset Manager
	User2 Application Deployment Manager
	User3 Application Administrator

\*

Asset Manager - A security role that grants permissions to administrative users so that they can manage the Asset Intelligence synchronization point, Asset Intelligence reporting classes, software inventory, hardware inventory, and metering rules.

\*

Application Deployment Manager - A security role that grants permissions to administrative users so that they can deploy and monitor applications.

\*

Compliance SettingsManager - A security role that grants permissions to administrative users so that they can define and monitor compliance settings.

## QUESTION 7

### HOTSPOT



You have a System Center 2012 R2 Configuration Manager Service Pack 1 (SP1) deployment.

From the Configuration Manager Console, you view the Deployment node from the Monitoring workspace as shown in the following table:

Software	Collection	Purpose	Action
App1	All Desktop and Server	Required	Install
App2	All Desktop and Server clients	Simulate	Install
App3	All Users	Available	Install
App4	All Desktop and Server clients	Required	Remediate

App2 has several requirements added to the deployment type. The Monitoring workspace displays the following completion statistics for App2.

- Success: 3
- In Progress: 0
- Error: 0
- Requirements Not Met: 5
- Unknown: 0

You need to identify the deployment status of App2.

What should you identify? To answer, select the appropriate options in the answer area.

Hot Area:

**Answer Area**

Number of client computers that have installed App2 as a result of this deployment:

0	
1	
2	
3	
4	
5	
6	
7	
8	

Number of client computers that meet the requirements for the application:

0	
1	
2	
3	
4	
5	
6	
7	
8	

Correct Answer:



### Answer Area

Number of client computers that have installed App2 as a result of this deployment:

0	▼
1	
2	
3	
4	
5	
6	
7	
8	

Number of client computers that meet the requirements for the application:

0	▼
1	
2	
3	
4	
5	
6	
7	
8	

Use simulated deployments if you want to test the applicability of an application deployment to computers without installing or uninstalling the application. A simulated deployment evaluates the detection method, requirements and dependencies for a deployment type, and reports the results in the Deployments node of the Monitoring workspace. References: <https://technet.microsoft.com/en-us/library/hh508773.aspx>

### QUESTION 8

#### DRAG DROP

Your network contains a System Center 2012 R2 Configuration Manager Service Pack 1 (SP1) environment.

You create a collection named All Managed Servers.

You need to inventory the environment variables of the All Managed Servers collection.

Which four actions should you perform in sequence? To answer, move the appropriate actions from the list of actions to the answer area and arrange them in the correct order.

Select and Place:



Create a custom client user setting named Env.	
Create a custom client device setting named Env.	
Deploy the Env custom setting to the All Managed Servers collection.	
In the Env custom setting, select <b>User Device Affinity</b> .	→
In the Envcustom setting, select <b>Hardware Inventory</b> .	←
In the Envcustom setting, select <b>Desktop (Win32_Desktop)</b> .	
In the Envcustom setting, select <b>Environment (Win32_Environment)</b> .	

Correct Answer:

Create a custom client user setting named Env.	Create a custom client device setting named Env.
	In the Envcustom setting, select <b>Hardware Inventory</b> .
	In the Envcustom setting, select <b>Environment (Win32_Environment)</b> .
In the Env custom setting, select <b>User Device Affinity</b> .	Deploy the Env custom setting to the All Managed Servers collection.
In the Envcustom setting, select <b>Desktop (Win32_Desktop)</b> .	

\* Win32\_Environment class (Windows)

TheWin32\_Environment WMI class represents an environment or system environment setting on a Windows computer system. Querying this class returns environment variables found in:

HKEY\_LOCAL\_MACHINE\System\CurrentControlSet\Control\Sessionmanager\Environment

And HKEY\_USERS\\Environment

Since we need to inventory WMI information, that means we need Hardware Inventory and you can only do that with a Custom Client Device Setting:



Create Custom Client Device Settings

General

Hardware Inventory

### Custom Device Settings

Specify the settings for devices. These settings override the default settings when they are assigned to a collection.

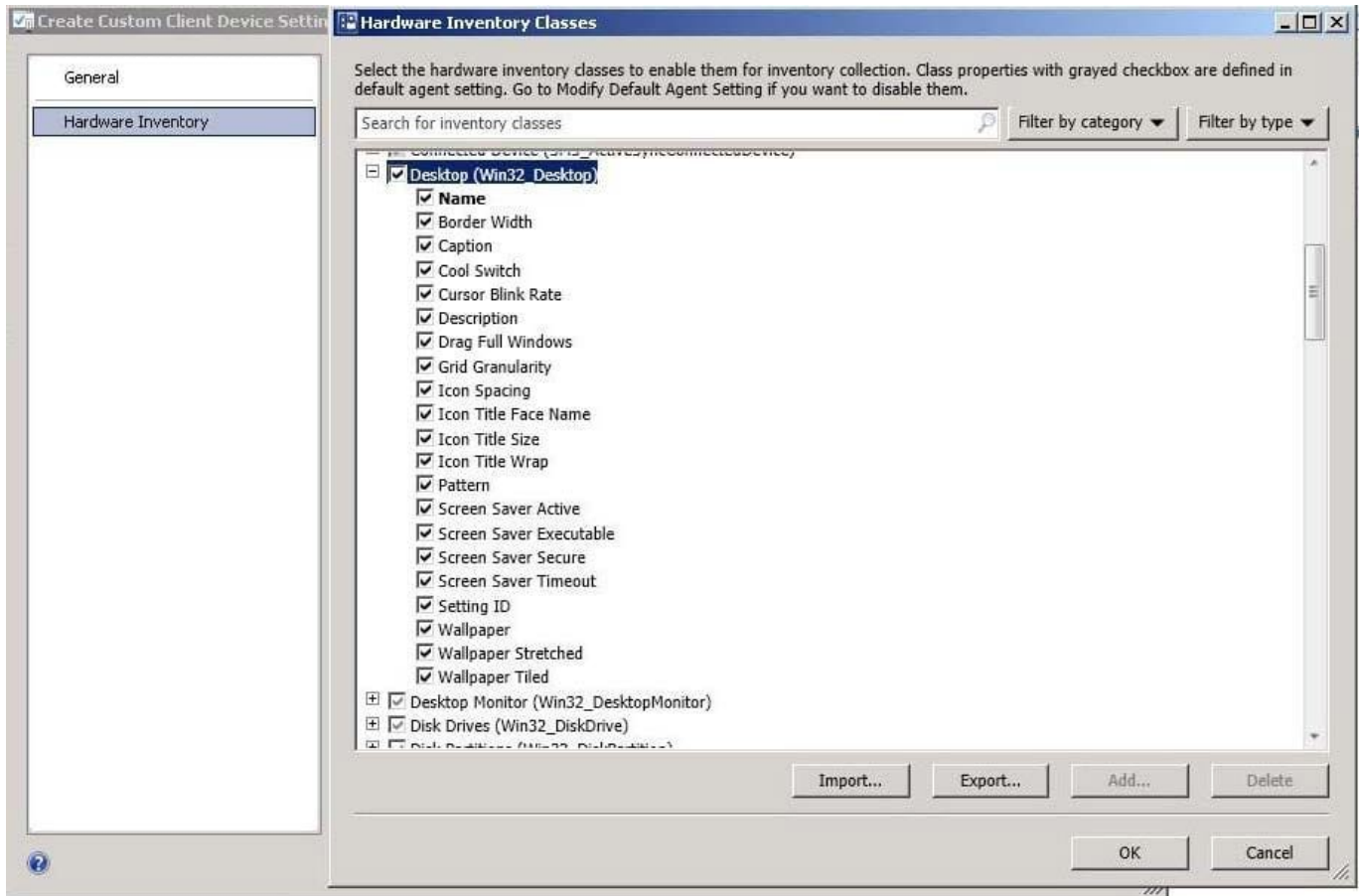
Name:

Description:

Select the custom settings to be enforced on client devices:

- Background Intelligent Transfer
- Client Policy
- Compliance Settings
- Computer Agent
- Computer Restart
- Endpoint Protection
- Hardware Inventory
- Network Access Protection (NAP)
- Power Management
- Remote Tools
- Software Deployment
- Software Inventory
- Software Metering
- Software Updates
- State Messaging
- User and Device Affinity

OK Cancel



## QUESTION 9

### DRAG DROP

Your network contains a single Active Directory domain named contoso.com. System Center 2012 R2 Configuration Manager Service Pack 1 (SP1) is deployed to contoso.com.

You have a Windows 8.1 operating system image named Image1 in Configuration Manager. Image1 has the data source of \\server1.contoso.com\source\Image1.wim. New client computers are deployed by using Image1.

You have an application named App1.exe. App1 is a configuration utility that does not require installation.

You need to ensure that App1.exe is included in all future deployments of Image1.

Which four actions should you perform in sequence? To answer, move the appropriate actions from the list of actions to the answer area and arrange them in the correct order.

Select and Place:



**Actions**

**Answer Area**

- Copy App1.exe
- Refresh Image1.
- Capture an image.
- Mount Image1.wim.
- Unmount Image1.wim.
- Schedule updates for Image1.
- Distribute the image to distribution points.



Correct Answer:

**Actions**

**Answer Area**

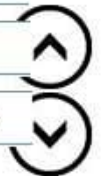
- Refresh Image1.
- Capture an image.
- Schedule updates for Image1.

Mount Image1.wim.

Copy App1.exe

Unmount Image1.wim.

Distribute the image to distribution points.



**QUESTION 10**

**HOTSPOT**

Your network contains a single Active Directory named contoso.com. A System Center 2012 R2 Configuration Manager Service Pack 1 (SP1) primary site named S01 is deployed to contoso.com. The Configuration Manager deployment includes the servers configured as shown in the following table.



Server name	Site system role
Server1	Site server
Server2	Management point
Server3	Distribution point
Server4	Enrollment point
Server5	Software update point

The distribution point is configured to require HTTPS for client communications.

You have a domain computer named Computer1 that runs the 64-bit version of Windows 8.1.

You need to install the Configuration Manager client on Computer1 manually.

Which network location should you use to start the installation? To answer, select the appropriate options in the answer area.

Hot Area:

**Answer Area**

\\Server1.contoso.com\sms_s01\client\	Ccmsetup.cab
\\Server3.contoso.com\sms_s01\client\x64\	Ccmsetup.exe
ftp://server1.contoso.com/sms_s01/client/	Client.msl
ftp://server3.contoso.com/sms_s01/client/x64/	Sceplninstall.exe
http://server3.contoso.com/sms_s01/client/	
http://server3.contoso.com/sms_s01/client/x64/	
https://server1.contoso.com/sms_s01/client/	
https://server1.contoso.com/sms_s01/client/x64/	

Correct Answer:

**Answer Area**

\\Server1.contoso.com\sms_s01\client\	Ccmsetup.cab
\\Server3.contoso.com\sms_s01\client\x64\	Ccmsetup.exe
ftp://server1.contoso.com/sms_s01/client/	Client.msl
ftp://server3.contoso.com/sms_s01/client/x64/	Sceplninstall.exe
http://server3.contoso.com/sms_s01/client/	
http://server3.contoso.com/sms_s01/client/x64/	
https://server1.contoso.com/sms_s01/client/	
https://server1.contoso.com/sms_s01/client/x64/	

You can manually install the System Center 2012 Configuration Manager client software on computers in your enterprise by using the CCMSetup.exe program. This program and its supporting files can be found in the Client folder of the System Center 2012 Configuration Manager installation folder on the site server and on management points in your site. This folder is shared to the network as \SMS\_\Client.

**QUESTION 11**





## DRAG DROP

You have a System Center 2012 R2 Configuration Manager Service Pack 1 (SP1) deployment. The deployment includes the collections described in the following table.

Collection name	Member of collections
Collection1	Computer2
Collection2	Computer2, Computer3
Collection3	Computer3

Configuration Manager has the client settings configured as shown in the following table.

Setting name	Priority	Deployed to	Additional hardware inventory classes
Default Client Settings	10000	<i>Not applicable</i>	<i>Not applicable</i>
Settings1	1	Collection1	Trusted Platform Module (TPM)
Settings2	2	Collection2	Battery
Settings3	3	Collection3	1394 controller

You need to identify which additional hardware inventory classes will be collected from Computer2 and Computer3.

What should you identify? To answer, drag the appropriate hardware inventory classes to the correct computers. Each hardware inventory class may be used once, more than once, or not at all. You may need to drag the split bar between

panes or scroll to view content.

Select and Place:



**Hardware Inventory Classes**

- 1394 controller only
- Battery only
- TPM only
- 1394 controller and battery only
- 1394 controller and TPM only
- Battery and TPM only
- 1394 controller, TPM, and battery
- No additional classes

**Answer Area**

Computer2: Hardware inventory class  
Computer3: Hardware inventory class

Correct Answer:

**Hardware Inventory Classes**

- 1394 controller only
- Battery only
- TPM only
- 1394 controller and TPM only
- Battery and TPM only
- No additional classes

**Answer Area**

Computer2: 1394 controller, TPM, and battery  
Computer3: 1394 controller and battery only

When you create a custom set of client settings, you include in this custom list only those settings that should differ from the default. Any settings not included on the custom list will be derived from the default settings automatically.

**QUESTION 12**

DRAG DROP

You have a System Center 2012 R2 Configuration Manager Service Pack 1 (SP1) deployment.



You need to implement anti-virus protection for all Configuration Manager clients. The solution must ensure that servers have different anti-virus settings than client computers.

In which order should you perform the required actions? To answer drag the appropriate actions to the correct locations. Each action may be used once, more than once, or not at all. You may need to drag the split bar between panes or scroll

to view content.

Select and Place:

Actions	Answer Area
Create a Configuration Manager Application.	First Action: Action
Create two deployments.	Second Action: Action
Deploy the Endpoint Protection point site system role.	Third Action: Create two custom antimalware policies
Deploy the System Health Validator point site system role.	Fourth Action: Action
Modify the Client Settings from the Administration workspace.	

Correct Answer:

Actions	Answer Area
Create a Configuration Manager Application.	First Action: Deploy the Endpoint Protection point site system role.
	Second Action: Modify the Client Settings from the Administration workspace.
	Third Action: Create two custom antimalware policies
Deploy the System Health Validator point site system role.	Fourth Action: Create two deployments.

### Step 1: EndPoint Protection

When System Center 2012 Endpoint Protection is used with Microsoft System Center 2012 Configuration Manager, it provides a comprehensive enterprise management solution that lets you do the following:

\*

Centrally deploy and configure the EndpointProtection client.

\*

Configure default and custom antimalware policies that apply to groups of computers.



Etc

Step 2:

Client settings for devices include Endpoint Protection.

All client settings in System Center 2012 Configuration Manager are managed in the Configuration Manager console from the Client Settings node in the Administration workspace. A set of default settings is supplied with Configuration

Manager. When you modify the default client settings, these settings are applied to all clients in the hierarchy. You can also configure custom client settings, which override the default client settings when you assign these to collections.

### QUESTION 13

DRAG DROP

You have a System Center 2012 R2 Configuration Manager Service Pack 1 (SP1) stand-alone primary site.

You need to create a configuration item that detects the version of an installed application based on a registry value. If version 3 of the application is not installed, the configuration item must install version 3 of the application.

How should you configure the configuration item? To answer drag the appropriate options to the correct locations. Each option may be used once, more than once, or not at all. You may need to drag the split bar between panes or scroll to

view content.

Select and Place:

#### Options

#### Answer Area

Registry value

Script

WQL query

Setting type:

Option

Remediation method:

Option

Correct Answer:



## Options

## Answer Area

Setting type:

Registry value

Remediation method:

Script

WQL query

### QUESTION 14

#### HOTSPOT

Your network contains a single Active Directory domain named contoso.com. The domain contains a member server named Server1.

System Center 2012 R2 Configuration Manager Service Pack 1 (SP1) is deployed to Server1. All of the site system roles are installed on Server1.

Server1 will be used for application deployment. The application source files are stored in the subfolders of a folder named E:\Software. E:\Software is shared as Software.

E:\Software\App1 contains the following files:

- App1.sft
- App1.apk
- App1.exe
- App1.msi
- App1.osd
- App1.sprj
- App1.xml
- Setup.exe
- App1.appv
- App1.appx

You plan to create an application named App1 by using the Create Application Wizard.

App1 will have the following deployment types:

You need to identify which path to use for each deployment type of App1.



What should you identify? To answer, select the appropriate options in the answer area.

Hot Area:

## Answer Area

App-V 5:

		▼
C:\Software\App1\App1.exe		
C:\Software\App1\App1.xml		
C:\Software\App1\App1.appv		
\\Server1.contoso.com\Software\App1.exe		
\\Server1.contoso.com\Software\App1.xml		
\\Server1.contoso.com\Software\App1.appv		

Windows App Package:

		▼
C:\Software\App1\App1.apk		
C:\Software\App1\App1.xml		
C:\Software\App1\App1.appx		
\\Server1.contoso.com\Software\App1.apk		
\\Server1.contoso.com\Software\App1.xml		
\\Server1.contoso.com\Software\App1.appx		

Correct Answer:

## Answer Area

App-V 5:

		▼
C:\Software\App1\App1.exe		
C:\Software\App1\App1.xml		
C:\Software\App1\App1.appv		
\\Server1.contoso.com\Software\App1.exe		
\\Server1.contoso.com\Software\App1.xml		
\\Server1.contoso.com\Software\App1.appv		

Windows App Package:

		▼
C:\Software\App1\App1.apk		
C:\Software\App1\App1.xml		
C:\Software\App1\App1.appx		
\\Server1.contoso.com\Software\App1.apk		
\\Server1.contoso.com\Software\App1.xml		
\\Server1.contoso.com\Software\App1.appx		



### QUESTION 15

#### DRAG DROP

Your network contains a single Active Directory domain named contoso.com. System Center 2012 R2 Configuration Manager Service Pack 1 (SP1) is deployed to contoso.com.

You have a Windows 8.1 operating system image named Image1 in Configuration Manager. Image1 has the data source of \\server1.contoso.com\source\Image1.wim. New client computers are deployed by using Image1.

You have an application named App1. App1 is a configuration utility that must be installed by using a Windows Installer (MSI) package.

You need to ensure that App1 is included in all future deployments of Image1.

Which four actions should you perform in sequence? To answer, move the appropriate actions from the list of actions to the answer area and arrange them in the correct order.

Select and Place:

#### Actions

- Refresh Image1.
- Install App1.exe.
- Deploy Image 1.
- Capture an image.
- Mount Image1.wim.
- Unmount Image1.wim.
- Schedule updates for Image1.
- Distribute the image to distribution points.

#### Answer Area



Correct Answer:



**Actions**

Refresh Image1.
Mount Image1.wim.
Unmount Image1.wim.
Schedule updates for Image1.

**Answer Area**

Deploy Image 1.
Install App1.exe.
Capture an image.
Distribute the image to distribution points.

Navigation icons: Left arrow, Right arrow, Up arrow, Down arrow.

[Latest 70-243 Dumps](#)

[70-243 PDF Dumps](#)

[70-243 Exam Questions](#)